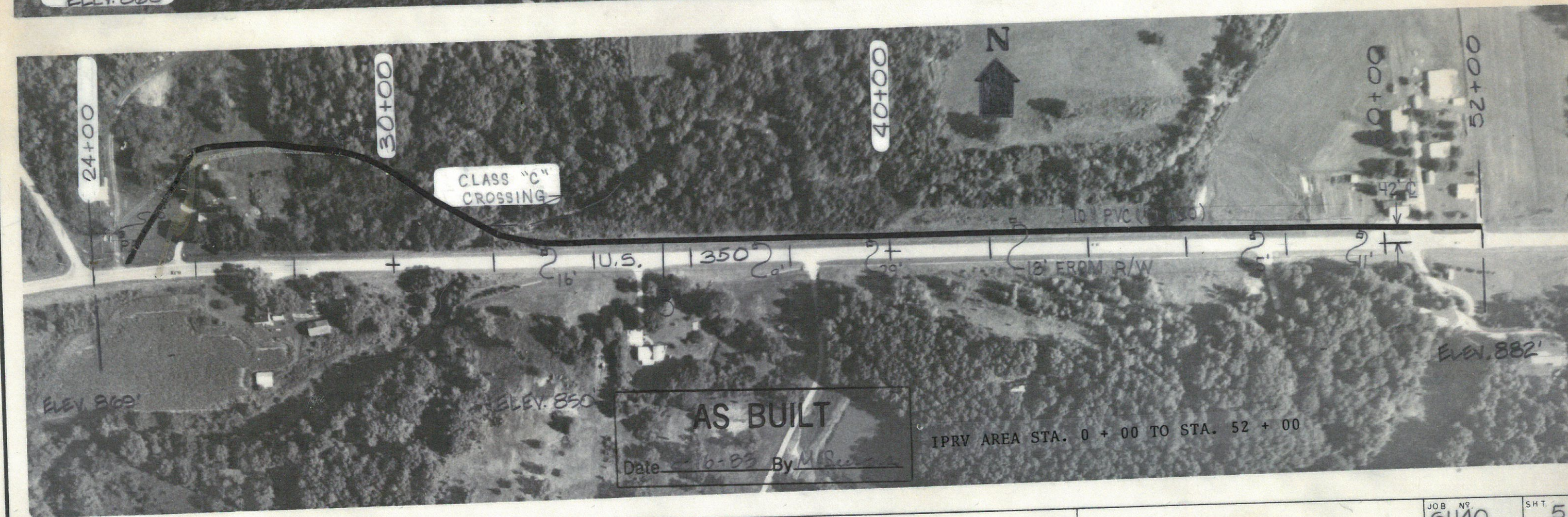
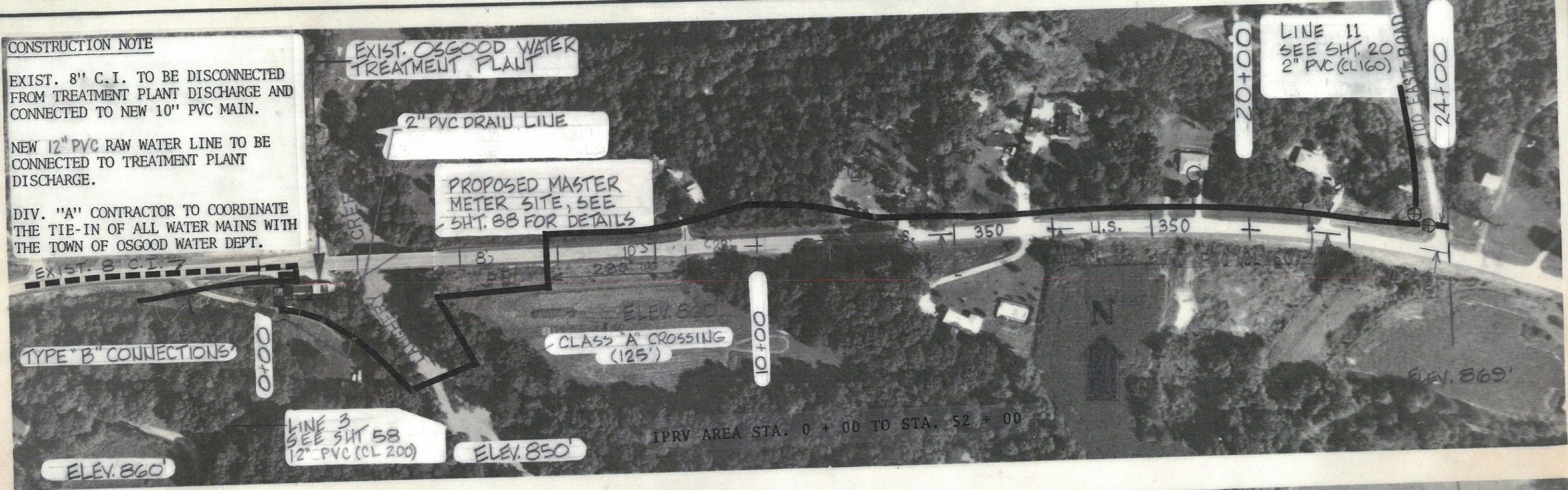


CONSTRUCTION NOTE

EXIST. 8" C.I. TO BE DISCONNECTED FROM TREATMENT PLANT DISCHARGE AND CONNECTED TO NEW 10" PVC MAIN.

NEW 12" PVC RAW WATER LINE TO BE CONNECTED TO TREATMENT PLANT DISCHARGE.

DIV. "A" CONTRACTOR TO COORDINATE THE TIE-IN OF ALL WATER MAINS WITH THE TOWN OF OSGOOD WATER DEPT.



DRAWN BY <u>WDJ</u> DATE <u>7.17.79</u>		CHECKED BY <u>[Signature]</u> DATE <u>1.21.80</u>		SIECO, INC. CONSULTING ENGINEERS, ARCHITECTS, PLANNERS		ELROD WATER CO, INC.		JOB NO. <u>61140</u> SCALE <u>1"=200'</u>		SHT. <u>5</u> OF <u>89</u>	
DIVISION: <u>LINE 1</u>											