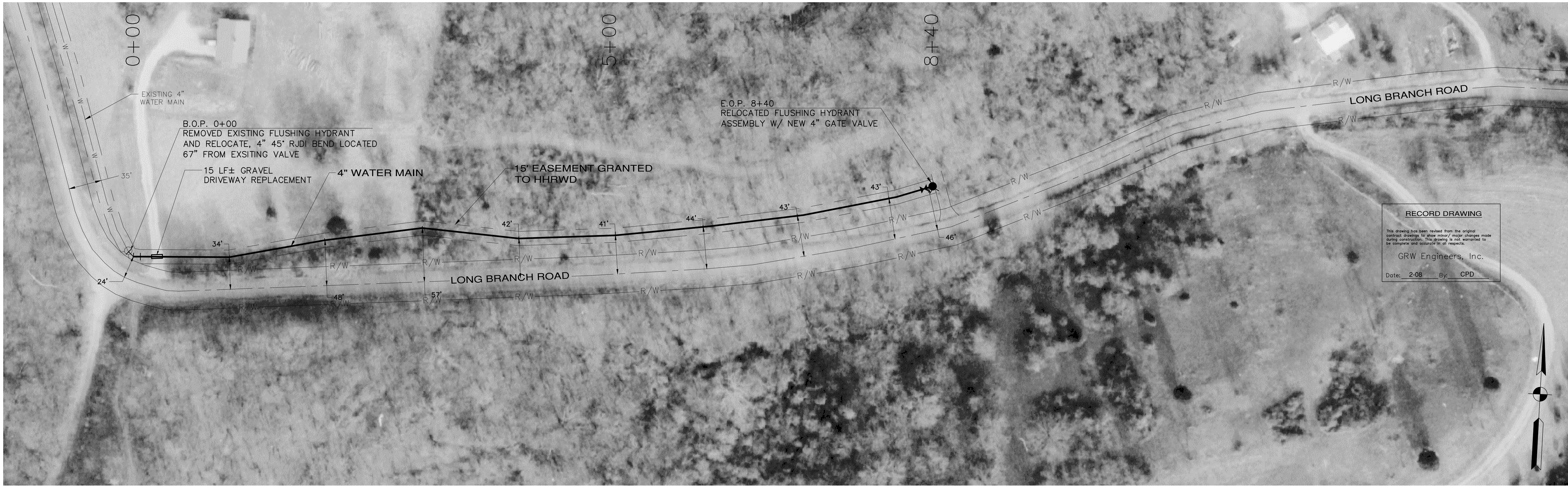
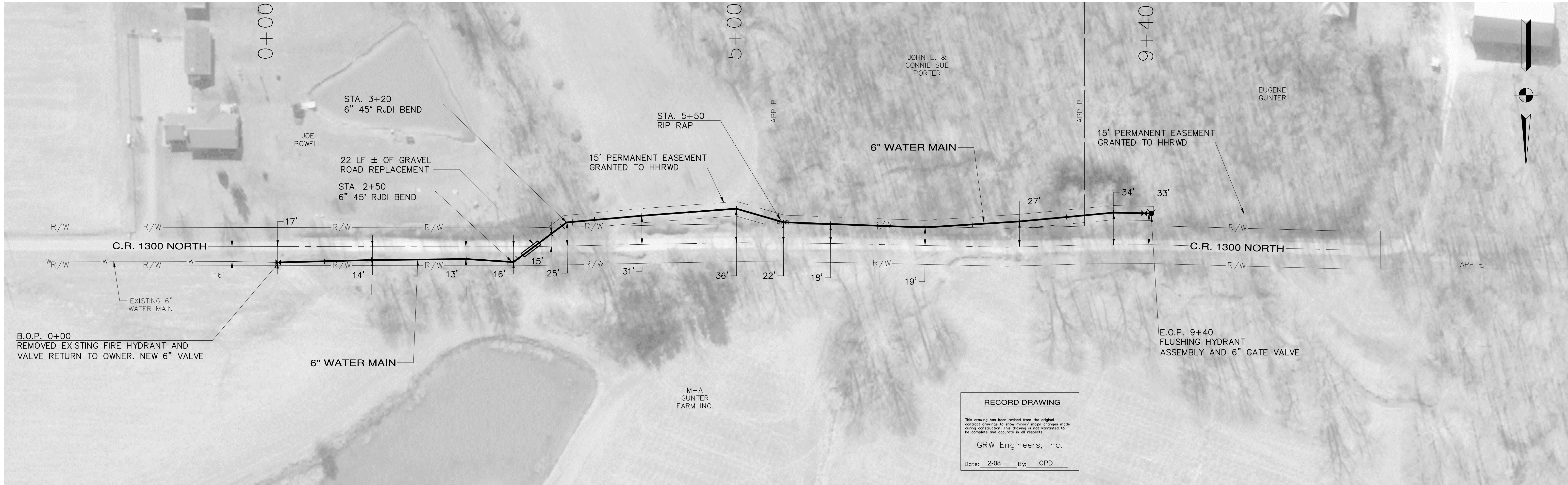


PRINTED: 3/10/2016 @ 11:02AM

FILE NAME: C:\3421-HHRWD Ann Region\Sub-01 CR 1300N DWG\AS-BUILT\2543\_86\_SHT713-ASBUILT.dwg



**RECORD DRAWING**  
This drawing has been revised from the original contract drawing to show minor/major changes made during construction. This drawing is not warranted to be complete and accurate in all respects.  
GRW Engineers, Inc.  
Date: 2-08 By: CPD



**RECORD DRAWING**  
This drawing has been revised from the original contract drawing to show minor/major changes made during construction. This drawing is not warranted to be complete and accurate in all respects.  
GRW Engineers, Inc.  
Date: 2-08 By: CPD

**NOTES:**

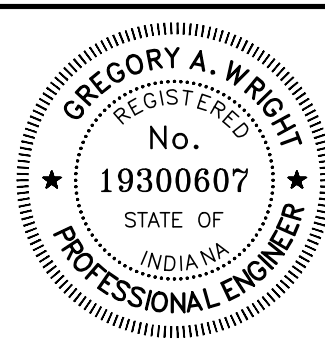
- 1). THE UTILITIES AND THEIR LOCATION SHOWN ON PLANS ARE APPROXIMATE. CONTRACTOR SHALL VERIFY ALL UTILITIES IN THE FIELD AND NOTIFY ALL UTILITY COMPANIES PRIOR TO INSTALLATION OF THE WATER LINE.
- 2). ALL PIPING SHALL BE CLASS 200 PVC UNLESS OTHERWISE NOTED.
- 3). 48" MINIMUM COVER REQUIRED OVER TOP OF WATER LINE.

NO.	DESCRIPTION	DATE	BY
1	AS-BUILT REVISION	2-08	CPD
REVISIONS			

HOOSIER HILLS REGIONAL  
WATER DISTRICT

C.R. 1300 NORTH  
WATER MAIN EXTENSION

GRW PROJECT NO. 3421-01



DRAWN: GCR	DATE: JANUARY 2006
FILE NAME: SHT713.DWG	SCALE: 1" = 50'
CHECKED:	SHEET NO.
APPROVED:	713