

INSTRUMENT: _____
ADDRESS: 9835 Hulton Road
Pendleton, IN 46064
LOT AREA: 8,609 Sq. Ft.
ZONING: Residential
SIDE YARD: 5 Ft. (MIN.)
FRONT YARD: 30 Ft. (MIN.)
REAR YARD: 15 Ft. (MIN.)

OAKMONT
SECTION TWO
LOT 94

JOB ID: IND-OM-0094
CONTROL #: _____
DATE: 04/01/2021
REV DATE: _____
REV DATE: _____



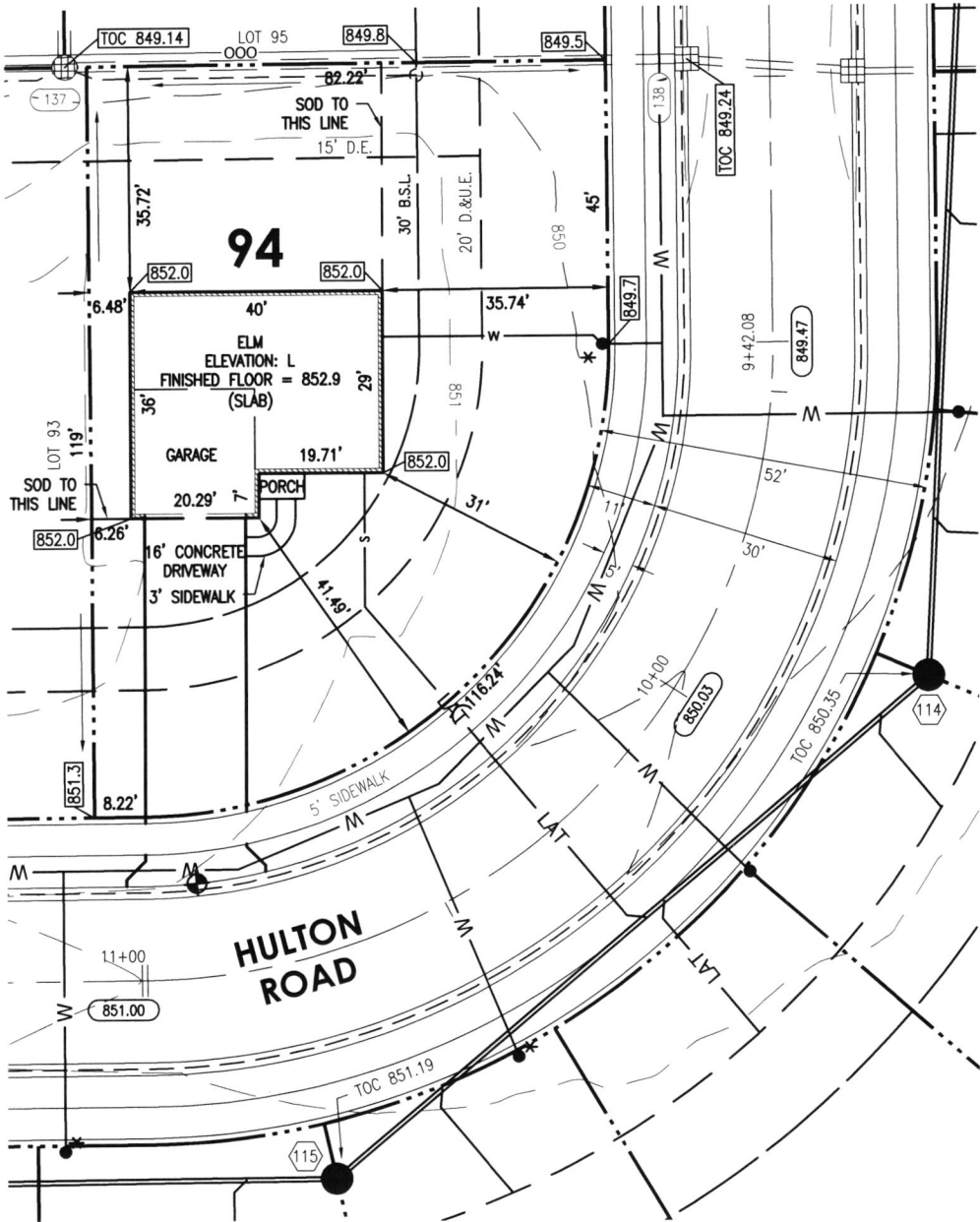
Know what's below.
Call before you dig.



Scale: 1" = 30'

LEGEND

- PROPERTY LINE
- SETBACK LINE
- EASEMENT
- CENTERLINE
- 799 - INTERMEDIATE CONTOUR
- 800 - INDEX CONTOUR
- W WATER SERVICE
- HO FIRE HYDRANT
- W WATER SERVICE LATERAL
- WATER METER
- SANITARY SEWER
- SANITARY STRUCTURE
- LAT SANITARY SEWER LATERAL
- S SANITARY SEWER LATERAL
- SANITARY CLEANOUT
- STORM SEWER
- SUBSURFACE DRAIN
- STORM STRUCTURE
- D.&U.E. DRAINAGE & UTILITY EASEMENT
- D.E. DRAINAGE EASEMENT
- B.S.L. BUILDING SETBACK LINE
- C.O. CLEANOUT
- S.S.D. SUBSURFACE DRAIN
- T.O.C. TOP OF CASTING
- DRAINAGE ARROW



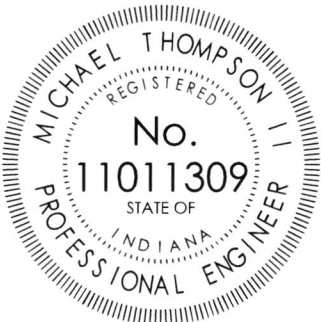
SOD: 616± Sq. Yd.
SEEDING: 1,899± Sq. Ft.
CONCRETE DRIVEWAY: 762± Sq. Ft.
PRIVATE WALK: 36± Sq. Ft.
PUBLIC WALK: 875± Sq. Ft.
APRON: 97± Sq. Ft.
HOUSE WIDTH: 40± Ft.
HOUSE DEPTH: 36± Ft.

HAMILTON
DESIGNS

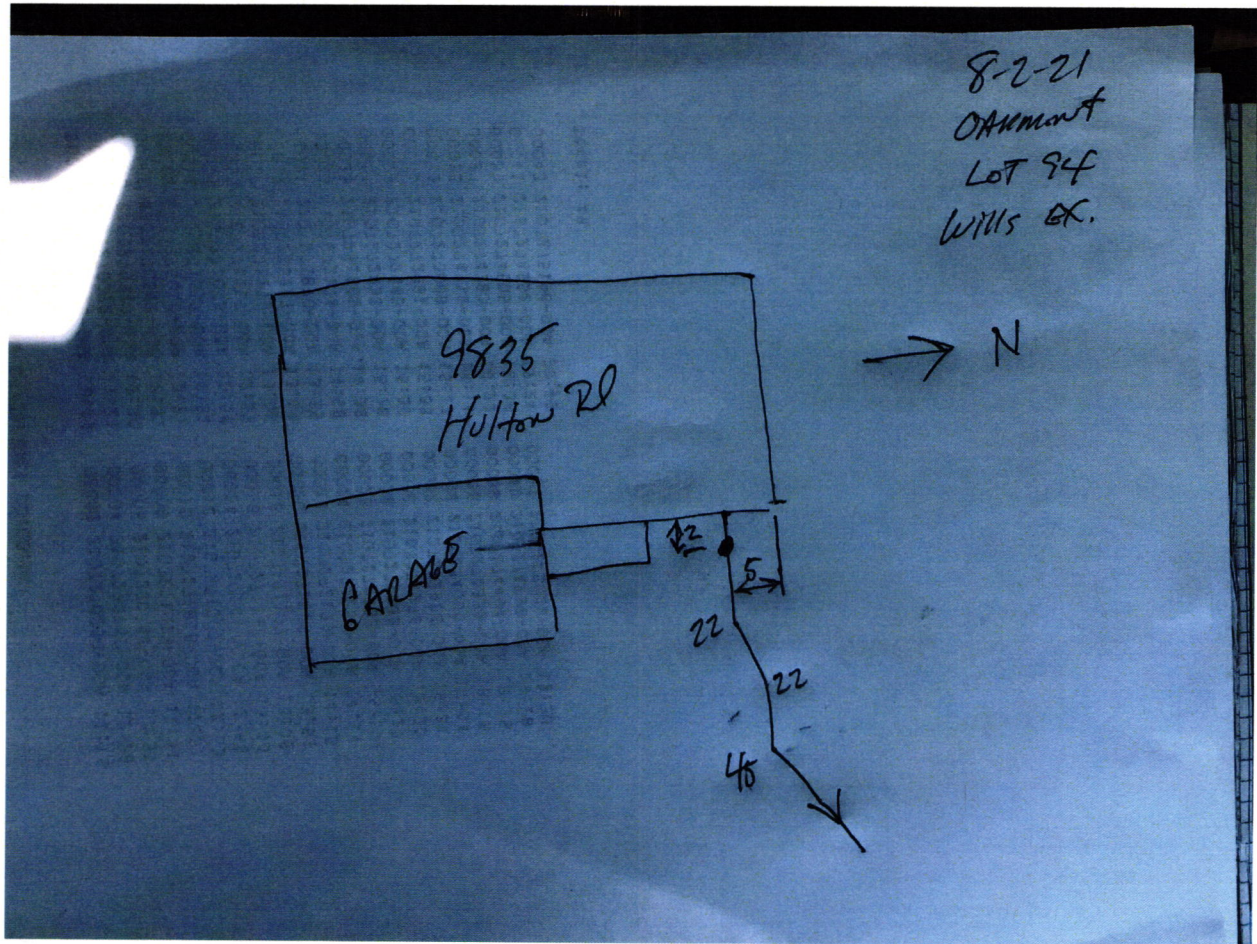
A LIMITED LIABILITY COMPANY
11 Municipal Drive, Suite 300
Fishers, Indiana 46038
P. (317) 570-8800
www.hamilton-designs.com

BENCHMARK
TOP OF CURB = 850.90

ALL UNDERGROUND SEWERS AND UTILITIES SHOWN ARE PLOTTED BY SCALE FROM DESIGN
PLANS FURNISHED BY OWNER. THE ACTUAL FIELD LOCATIONS MAY VARY.
THIS DRAWING IS NOT INTENDED TO BE REPRESENTED AS A RETRACEMENT OR ORIGINAL
BOUNDARY SURVEY, A ROUTE SURVEY, OR A SURVEY LOCATION REPORT.



Michael Thompson





THE FRONT OF THIS CHECK CHANGES COLOR GRADUALLY AND EVENLY FROM DARK TO LIGHT.

Bank of America, N.A.
Atlanta, Dekalb County, Georgia



RYAN HOMES
NVHOMES
HEARTLAND HOMES
NVR BUILDING PRODUCTS

FIELD ACCOUNT

438848

DATE
04/13/21

VENDOR #
70075

CHECK #
438848

PAY

*****4,160.00

EXACTLY:

FOUR THOUSAND ONE HUNDRED SIXTY DOLLARS AND 00 CENTS

PAY TO THE ORDER OF:

VOID AFTER 90 DAYS

NVR, INC.

CHECK NOT VALID OVER \$50,000.00

FALL CREEK REGIONAL WASTE


AUTHORIZED SIGNATURE

Rec# 011665