

INSTRUMENT: _____
ADDRESS: 9790 Hulton Road
Pendleton, IN 46064
LOT AREA: 9,058 Sq. Ft.
ZONING: Residential
SIDE YARD: 5 Ft. (MIN.)
FRONT YARD: 30 Ft. (MIN.)
REAR YARD: 15 Ft. (MIN.)

OAKMONT
SECTION TWO
LOT 68

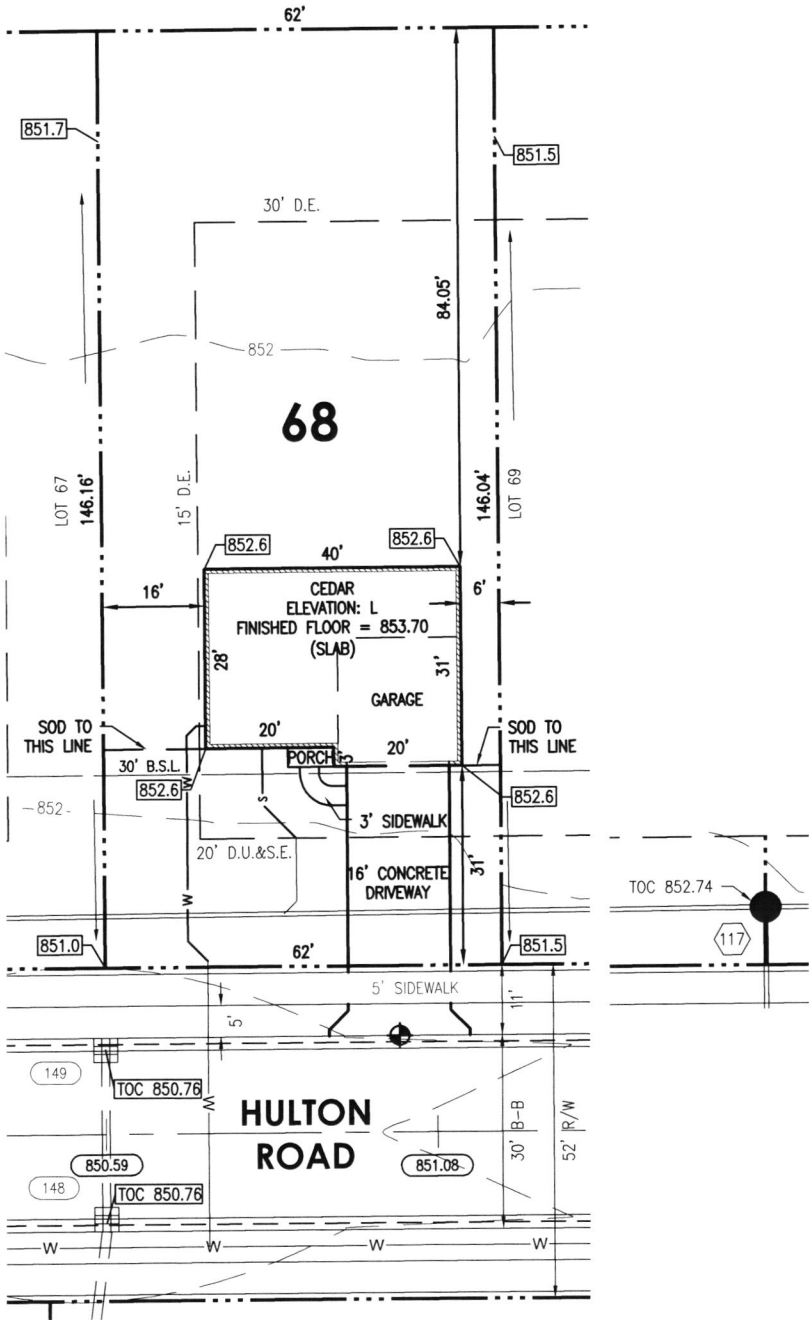
JOB ID: IND-OM-0068
CONTROL #: _____
DATE: 08/25/2021
REV DATE: _____
REV DATE: _____



Know what's below.
Call before you dig.



Scale: 1" = 30'



LEGEND

- PROPERTY LINE
- SETBACK LINE
- EASEMENT
- CENTERLINE
- 799 - INTERMEDIATE CONTOUR
- 800 - INDEX CONTOUR
- W WATER SERVICE
- HO FIRE HYDRANT
- W WATER SERVICE LATERAL
- WATER METER
- SANITARY SEWER
- SANITARY STRUCTURE
- LAT SANITARY SEWER LATERAL
- S SANITARY SEWER LATERAL
- SANITARY CLEANOUT
- STORM SEWER
- SUBSURFACE DRAIN
- STORM STRUCTURE
- D.U.&S.E. DRAINAGE, UTILITY, & SEWER EASEMENT
- D.E. DRAINAGE EASEMENT
- B.S.L. BUILDING SETBACK LINE
- C.O. CLEANOUT
- S.S.D. SUBSURFACE DRAIN
- T.O.C. TOP OF CASTING
- DRAINAGE ARROW

SOD:	193± Sq. Yd.
SEEDING:	3,988± Sq. Ft.
CONCRETE DRIVEWAY:	512± Sq. Ft.
PRIVATE WALK:	27± Sq. Ft.
PUBLIC WALK:	310± Sq. Ft.
APRON:	95± Sq. Ft.
HOUSE WIDTH:	40± Ft.
HOUSE DEPTH:	31± Ft.

HAMILTON
DESIGNS

A LIMITED LIABILITY COMPANY
11 Municipal Drive, Suite 300
Fishers, Indiana 46038
P. (317) 570-8800
www.hamilton-designs.com

BENCHMARK
TOP OF CURB = 851.05

ALL UNDERGROUND SEWERS AND UTILITIES SHOWN ARE PLOTTED BY SCALE FROM DESIGN
PLANS FURNISHED BY OWNER. THE ACTUAL FIELD LOCATIONS MAY VARY.
THIS DRAWING IS NOT INTENDED TO BE REPRESENTED AS A RETRACEMENT OR ORIGINAL
BOUNDARY SURVEY, A ROUTE SURVEY, OR A SURVEY LOCATION REPORT.



Todd C. Wallace

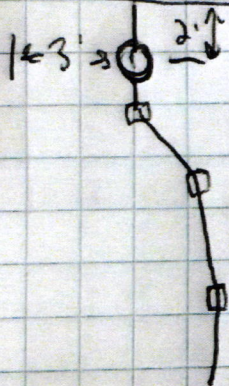
Oakmont Lot # 68

10/22/21

N ←

Will Exe

9790 Hulton Rd.





Bank of America, N.A.
Atlanta, Dekalb County, Georgia



RYAN HOMES
NVHOMES
HEARTLAND HOMES
NVR BUILDING PRODUCTS

FIELD ACCOUNT

449950

64-1278
611

DATE 08/31/21
VENDOR # 70075
CHECK # 449950

PAY

*****4,160.00

EXACTLY:

FOUR THOUSAND ONE HUNDRED SIXTY DOLLARS AND 00 CENTS

PAY TO THE ORDER OF:

VOID AFTER 90 DAYS

NVR, INC.

CHECK NOT VALID OVER \$50,000.00

FALL CREEK REGIONAL WASTE

Erin Hays
AUTHORIZED SIGNATURE

SECURITY FEATURES INCLUDED DETAILS ON BACK

Rec# 011030