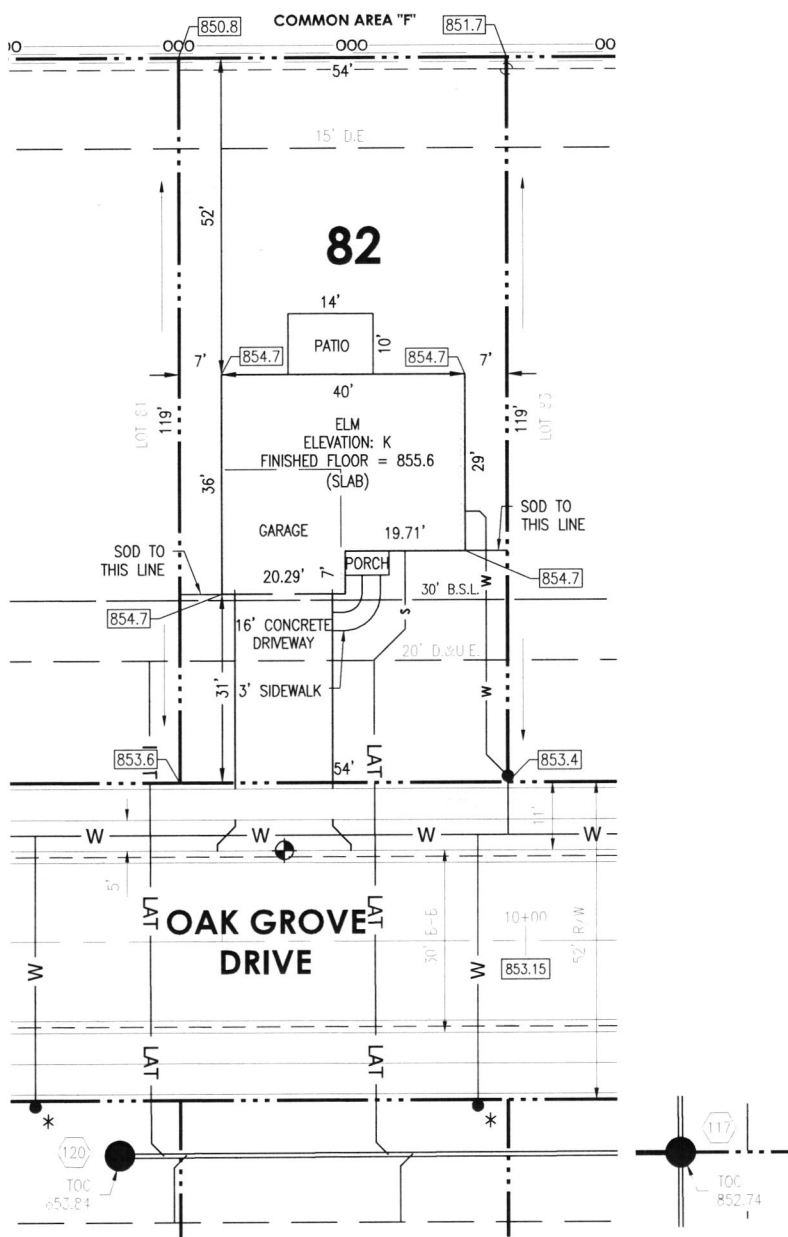


INSTRUMENT: _____
ADDRESS: 9753 Oak Grove Drive
Pendleton, IN 46064
LOT AREA: 6,426 Sq. Ft.
ZONING: Residential
SIDE YARD: 5 Ft. (MIN.)
FRONT YARD: 30 Ft. (MIN.)
REAR YARD: 15 Ft. (MIN.)

OAKMONT
SECTION TWO
LOT 82

JOB ID: IND-OM-0082
CONTROL #: -
DATE: 01/21/2022
REV DATE: 02/01/2022
REV DATE: _____



LEGEND

- PROPERTY LINE
- SETBACK LINE
- EASEMENT
- CENTERLINE
- INTERMEDIATE CONTOUR
- INDEX CONTOUR
- WATER SERVICE
- FIRE HYDRANT
- WATER SERVICE LATERAL
- WATER METER
- SANITARY SEWER
- SANITARY STRUCTURE
- SANITARY SEWER LATERAL
- SANITARY SEWER LATERAL
- SANITARY CLEANOUT
- STORM SEWER
- SUBSURFACE DRAIN
- STORM STRUCTURE
- DRAINAGE & UTILITY EASEMENT
- DRAINAGE EASEMENT
- BUILDING SETBACK LINE
- CLEANOUT
- SUBSURFACE DRAIN
- TOP OF CASTING
- DRAINAGE ARROW
- SINGLE METER PIT

SOD: 166± Sq. Yd.
SEEDING: 2,313± Sq. Ft.
CONCRETE DRIVEWAY: 512± Sq. Ft.
PRIVATE WALK: 36± Sq. Ft.
PUBLIC WALK: 270± Sq. Ft.
APRON: 95± Sq. Ft.
HOUSE WIDTH: 40± Ft.
HOUSE DEPTH: 36± Ft.

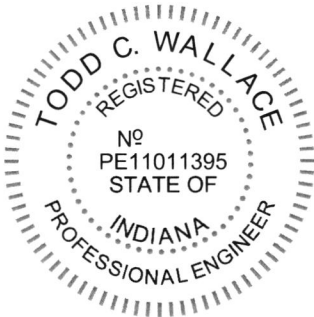
HAMILTON
DESIGNS

A LIMITED LIABILITY COMPANY
11 Municipal Drive, Suite 300
Fishers, Indiana 46038
P. (317) 570-8800
www.hamilton-designs.com

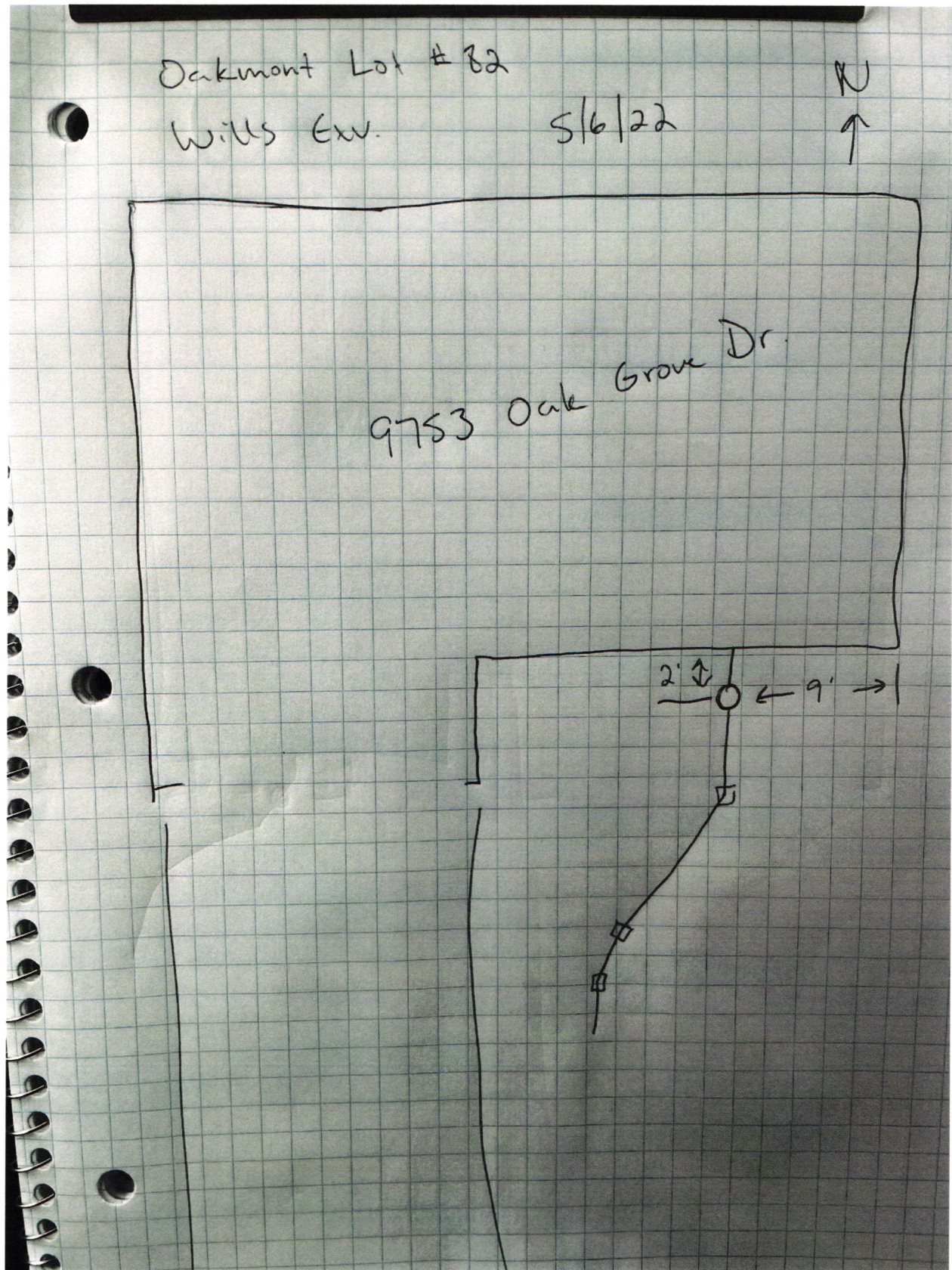
BENCHMARK
TOP OF CURB = 853.47

ALL UNDERGROUND SEWERS AND UTILITIES SHOWN ARE PLOTTED BY SCALE FROM DESIGN PLANS FURNISHED BY OWNER. THE ACTUAL FIELD LOCATIONS MAY VARY.

THIS DRAWING IS NOT INTENDED TO BE REPRESENTED AS A RETACEMENT OF ORIGINAL BOUNDARY SURVEY, A ROUTE SURVEY, OR A SURVEY LOCATION REPORT.



Todd C. Wallace







Bank of America, N.A.
Atlanta, Dekalb County, Georgia



RYAN HOMES
NVHOMES
HEARTLAND HOMES
NVR BUILDING PRODUCTS

FIELD ACCOUNT

502364

64-1278
611

DATE 03/02/22
VENDOR # 70075
CHECK # 502364

PAY *****4,160.00

EXACTLY:

FOUR THOUSAND ONE HUNDRED SIXTY DOLLARS AND 00 CENTS

PAY TO THE ORDER OF:

VOID AFTER 90 DAYS

NVR, INC.

CHECK NOT VALID OVER \$50,000.00

FALL CREEK REGIONAL WASTE


AUTHORIZED SIGNATURE

SECURITY FEATURES INCLUDED DETAILS ON BACK

Rec # 012127