



# STOEPPELWERTH

ALWAYS ON

7965 East 106th Street, Fishers, IN 46038-2505  
phone: 317.849.5935 fax: 317.849.5942

JOB ID SPRINGBK1A.6

CONTROL# 105096 LEN

PARCEL# 48-15-28-401-002.006-014

9176 SPRINGBROOK DRIVE  
PENDLETON, IN 46064

CONTRACTOR SHALL CUT 15' OFF  
OF LATERAL AND BEGIN FROM  
THAT POINT AND CONNECT TO  
HOUSE FOLLOWING PLOT PLAN.



1" = 40'

LOT AREA: 12,086 Sq. Ft.

M.F.F.E.=864.6

M.F.P.G.=864.2

LEGEND:

XX.X

PROPOSED GRADE PER PLAN

XX.XAB

AS BUILT GRADE

S.S.D.

SUB-SURFACE DRAIN

ASL

SANITARY SEWER

PSL

6" AS BUILT SANITARY LATERAL

W

6" PROPOSED SANITARY LATERAL

W

STORM SEWER

W

3/4" WATER CONNECTION

W

WATER MAIN

W

SWALE

W

SANITARY MANHOLE

W

STORM MANHOLE

W

CURB INLET

W

FIRE HYDRANT

W

STREET TREE

W

WATER VALVE

W

BLOW OFF

W

D.U.&S.S.E. DRAINAGE, UTILITY & SANITARY SEWER EASEMENT

W

D.&U.E. DRAINAGE & UTILITY EASEMENT

W

D.E. DRAINAGE EASEMENT

W

B.L. BUILDING LINE

W

M.F.P.G. MINIMUM FLOOD PROTECTION GRADE

W

M.F.F.E. MINIMUM FINISHED FLOOR ELEVATION

W

M.F.F.E. MINIMUM FINISHED FLOOR ELEVATION

W

M.F.F.E. MINIMUM FINISHED FLOOR ELEVATION

W

M.F.F.E. MINIMUM FINISHED FLOOR ELEVATION

W

M.F.F.E. MINIMUM FINISHED FLOOR ELEVATION

W

M.F.F.E. MINIMUM FINISHED FLOOR ELEVATION

W

M.F.F.E. MINIMUM FINISHED FLOOR ELEVATION

W

M.F.F.E. MINIMUM FINISHED FLOOR ELEVATION

W

M.F.F.E. MINIMUM FINISHED FLOOR ELEVATION

W

M.F.F.E. MINIMUM FINISHED FLOOR ELEVATION

W

M.F.F.E. MINIMUM FINISHED FLOOR ELEVATION

W

M.F.F.E. MINIMUM FINISHED FLOOR ELEVATION

W

M.F.F.E. MINIMUM FINISHED FLOOR ELEVATION

W

M.F.F.E. MINIMUM FINISHED FLOOR ELEVATION

W

M.F.F.E. MINIMUM FINISHED FLOOR ELEVATION

W

M.F.F.E. MINIMUM FINISHED FLOOR ELEVATION

W

M.F.F.E. MINIMUM FINISHED FLOOR ELEVATION

W

M.F.F.E. MINIMUM FINISHED FLOOR ELEVATION

W

M.F.F.E. MINIMUM FINISHED FLOOR ELEVATION

W

M.F.F.E. MINIMUM FINISHED FLOOR ELEVATION

W

M.F.F.E. MINIMUM FINISHED FLOOR ELEVATION

W

M.F.F.E. MINIMUM FINISHED FLOOR ELEVATION

W

M.F.F.E. MINIMUM FINISHED FLOOR ELEVATION

W

M.F.F.E. MINIMUM FINISHED FLOOR ELEVATION

W

M.F.F.E. MINIMUM FINISHED FLOOR ELEVATION

W

M.F.F.E. MINIMUM FINISHED FLOOR ELEVATION

W

M.F.F.E. MINIMUM FINISHED FLOOR ELEVATION

W

M.F.F.E. MINIMUM FINISHED FLOOR ELEVATION

W

M.F.F.E. MINIMUM FINISHED FLOOR ELEVATION

W

M.F.F.E. MINIMUM FINISHED FLOOR ELEVATION

W

M.F.F.E. MINIMUM FINISHED FLOOR ELEVATION

W

M.F.F.E. MINIMUM FINISHED FLOOR ELEVATION

W

M.F.F.E. MINIMUM FINISHED FLOOR ELEVATION

W

M.F.F.E. MINIMUM FINISHED FLOOR ELEVATION

W

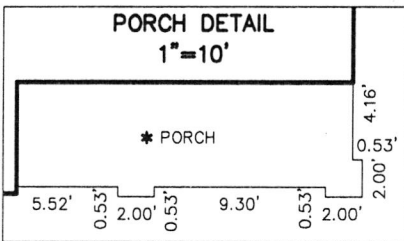
M.F.F.E. MINIMUM FINISHED FLOOR ELEVATION

W

M.F.F.E. MINIMUM FINISHED FLOOR ELEVATION

W

M.F.F.E. MINIMUM FINISHED FLOOR ELEVATION



ALL UNDERGROUND SEWERS AND UTILITIES  
SHOWN ARE PLOTTED BY SCALE FROM  
DESIGN PLANS FURNISHED BY ENGINEER  
THE ACTUAL FIELD LOCATION MAY VARY.



BENCHMARK

TOP OF CURB=865.10

LOT 6  
SPRINGBROOK  
SECTION 1A  
INST. #2019R014444  
ZONING: R3  
5' MINIMUM SIDE YARD  
30' MINIMUM FRONT YARD  
15' MINIMUM REAR YARD

SOD: 1,205 ± Sq. Yd.  
SEEDING: N/A ± Sq. Ft.  
CONC. DRIVEWAY: 826 ± Sq. Ft.  
PRIVATE WALK: 24 ± Sq. Ft.  
PUBLIC WALK: 1,119 ± Sq. Ft.  
APRON: 305 ± Sq. Ft.  
ADDITIONAL SOD: N/A ± Sq. Yd.  
HANDICAP RAMPS: 2

SIGNATURE:

DATE:

SIGNATURE REPRESENTS CONFIRMATION OF RECEIPT OF PLOT PLAN BY CUSTOMER

David J. Stoeppelwerth

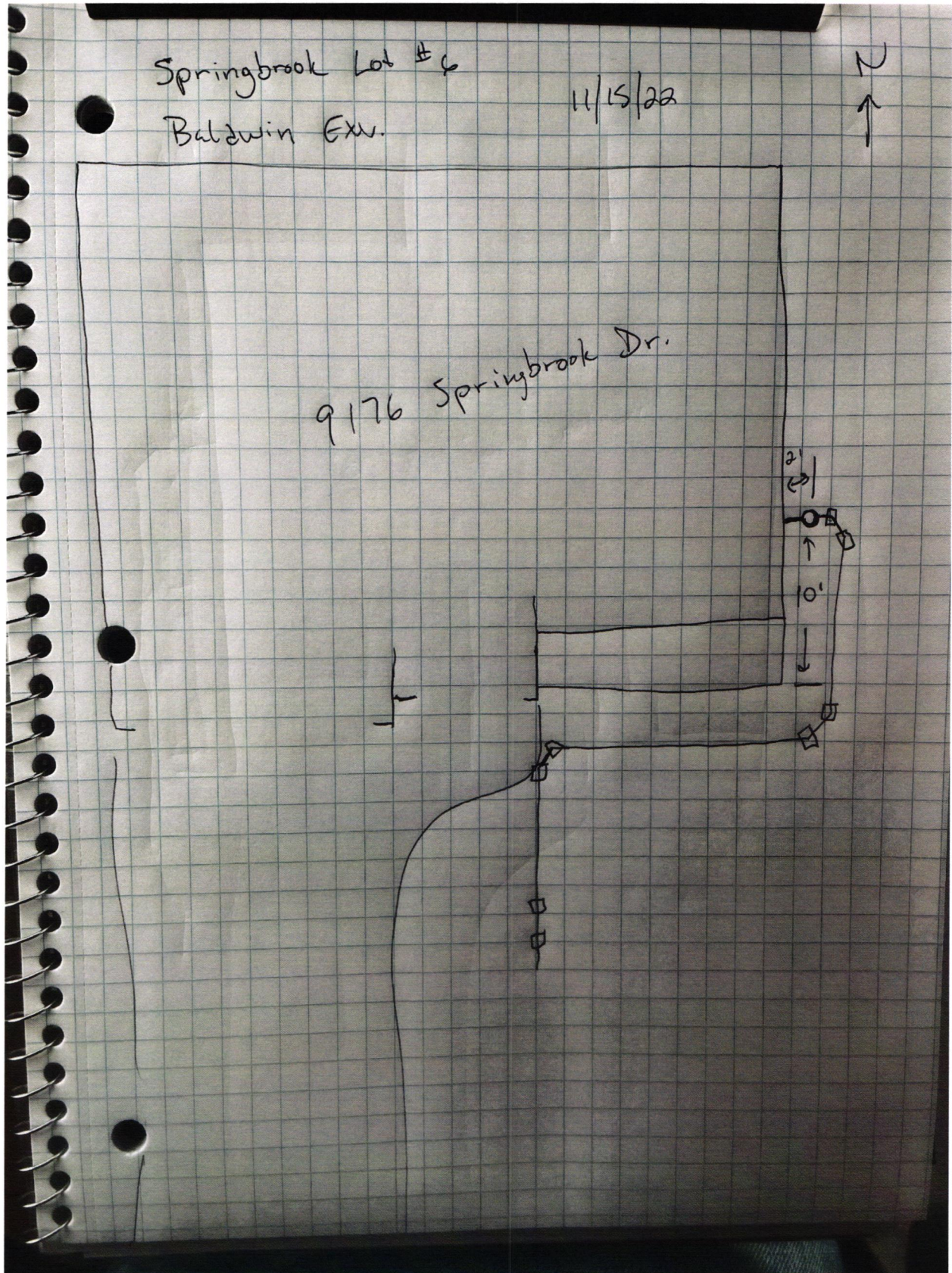
NOTE: THIS DRAWING IS FOR PERMITTING PURPOSES ONLY AND NOT  
INTENDED TO BE REPRESENTED AS A RETRACEMENT SURVEY,  
ORIGINAL SURVEY, ROUTE SURVEY, LOT SURVEY OR A SURVEYOR  
LOCATION REPORT OR ANY OTHER TYPE OF PROPERTY BOUNDARY  
ASSESSMENT. NO BOUNDARY CORNERS HAVE BEEN SET AND  
THEREFORE NO LIABILITY WILL BE ASSUMED FOR ANY USE OF THIS  
DATA FOR CONSTRUCTION OF NEW IMPROVEMENTS INCLUDING FENCES.

09/27/22 WMA



Indiana 811  
Know what's below.  
Call before you dig.



















SPBK 4

C618917451891745

PAGE: 1 of 1

DATE: October 3, 2022

CHECK NUMBER: 1891745

AMOUNT PAID: \$760.00

Lennar Corporation  
Lennar Homes of Indiana, LLC  
Indianapolis Division  
11555 N Meridian St Ste 400  
Carmle, IN 46032

00007 6341 CKS SD 22276 - 0001891745 NNNNNNNNNN 2765100004203 XIP3C6 C  
FALL CREEK REGIONAL WASTE DISTRICT  
PO BOX 59  
PENDLETON IN 46064



Vendor No: 12975753

Date	CO. #	Invoice Number	Payment Advice	Gross Amount	Discount	Net Amount
09/26/22	69372	69372710006 WS	MV-69372710006 WS	\$760.00	\$0.00	\$760.00
TOTALS				\$760.00	\$0.00	\$760.00

Rec # 012348

PLEASE DETACH BEFORE DEPOSITING CHECK

Lennar Corporation  
Lennar Homes of Indiana, LLC  
Indianapolis Division  
11555 N Meridian St Ste 400  
Carmle, IN 46032

CHECK  
NUMBER 1891745  
October 3, 2022

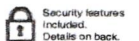
70-2322  
719

\*\*\* VOID AFTER 180 DAYS \*\*\*

PAY FALL CREEK REGIONAL WASTE DISTRICT  
TO THE PO BOX 59  
ORDER OF: PENDLETON, IN 46064

CHECK AMOUNT  
\$760.00

EXACTLY \*\*\*\*\*760 DOLLARS AND 00 CENTS



JPMorgan Chase Bank, N.A.  
Chicago, IL

*Dave B...*

Authorized Signature