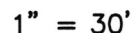






7965 East 106th Street, Fishers, IN 46038-2505  
phone: 317.849.5935 fax: 317.849.5942







8687 MOYER PLACE  
PENDLETON, IN 46064



LOT AREA: 7,800 Sq. Ft.

$$\begin{array}{r} \text{M.F.F.E.} = 864.1 \\ \text{M.F.P.G.} = 863.9 \end{array}$$


XX.X	PROPOSED GRADE PER PLAN
XX.XAB	AS BUILT GRADE

— — — S.S.D. — — —	SUB-SURFACE DRAIN
— — — ASL — — —	SANITARY SEWER
— — — PSL — — —	6" AS BUILT SANITARY LATERAL
— — — — —	6" PROPOSED SANITARY LATERAL
— — — W — — —	STORM SEWER
— — — W — — —	3/4" WATER CONNECTION
— — — W — — —	WATER MAIN
— — — ◦ ◦ ◦ ◦ — — —	SWALE
	SANITARY MANHOLE
	STORM MANHOLE
	CURB INLET
	FIRE HYDRANT
	STREET TREE
	EMERGENCY FLOOD ROUTE
D.U.&S.S.E.	DRAINAGE, UTILITY & SANITARY SEWER EASEMENT
D.E.&P.E.	DRAINAGE EASEMENT & PEDESTRIAN EASEMENT
D.&U.E.	DRAINAGE & UTILITY EASEMENT
B.L.	BUILDING LINE
M.F.F.E.	MINIMUM FINISHED FLOOR ELEVATION
M.F.P.G.	MINIMUM FLOOD PROTECTION GRADE

5' MINIMUM SIDE YARD  
30' MINIMUM FRONT YARD  
15' MINIMUM REAR YARD

SOD:	204 ±	Sq. Yd.
SEEDING:	4,134 ±	Sq. Ft.
SEED IN EASEMENT:	600 ±	Sq. Ft.
CONC. DRIVEWAY:	512 ±	Sq. Ft.
PRIVATE WALK:	24 ±	Sq. Ft.
PUBLIC WALK:	220 ±	Sq. Ft.
APRON:	249 ±	Sq. Ft.
ADDITIONAL SOD TO:	393 ±	Sq. Yd.
REAR EASEMENT		
HANDICAP RAMPS:	0	

SIGNATURE: \_\_\_\_\_ DATE: \_\_\_\_\_

SIGNATURE REPRESENTS CONFIRMATION OF RECEIPT OF PLOT PLAN BY CUSTOMER



TOP OF CURB=862.54



NOTE: THIS DRAWING IS NOT INTENDED TO BE  
REPRESENTED AS A RETRACEMENT OR ORIGINAL  
BOUNDARY SURVEY, A ROUTE SURVEY OR A  
SURVEYOR LOCATION REPORT.

02/15/21 JSS





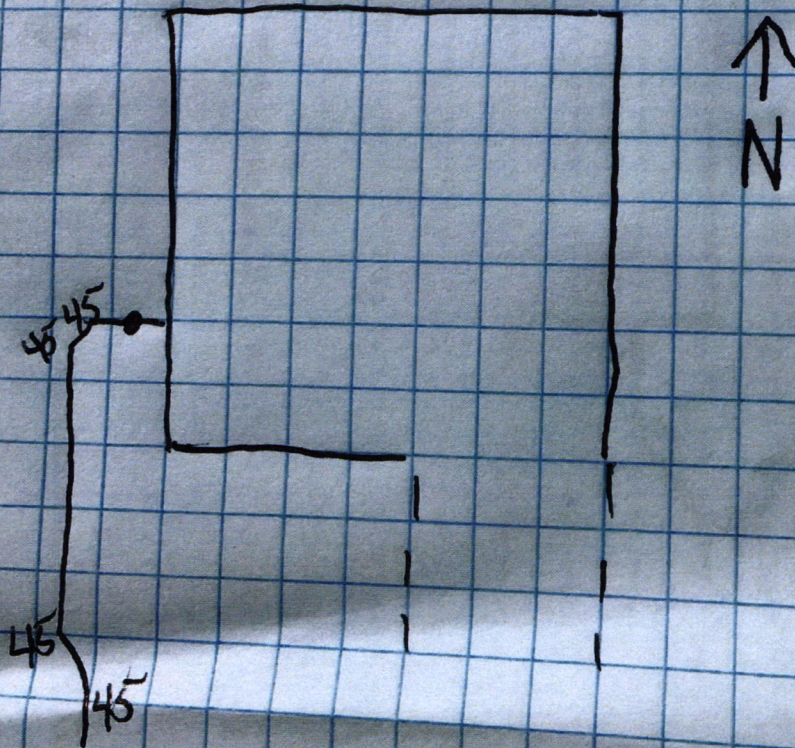
Springbrook

LOT 96

8687 Moyer Pl.

5/20/21

Baldwin ex









DO NOT ACCEPT THIS CHECK UNLESS YOU CAN SEE A DUAL-TONE TRUE WATERMARK THAT APPEARS AS A CHAIN LINK PATTERN WHEN HELD TO THE LIGHT. 

**Lennar Homes of Indiana Inc**  
11555 N Meridian St Ste 400

JPMorgan Chase Bank N.A.  
Chicago, IL

**01596207**

Carmel, IN 46032

*Void if over 180 days*

70-2322  
719

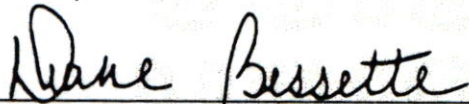
DATE	AMOUNT
04/05/21	\$*****760.00

**PAY**

SEVEN HUNDRED SIXTY AND 00/100 \*\*\*\*\*

DOLLARS

TO THE ORDER OF  
Fall Creek Regional Waste District  
PO Box 59  
Pendleton IN 46064

  
Authorized Signatory

THE FACE OF THIS CHECK HAS A BLUE AND GREEN BACKGROUND - ANY OTHER COLORS MAY BE EVIDENCE OF CHEMICAL ALTERATION OR ERASURE - SEE REVERSE SIDE FOR MORE SAFETY FEATURES. 

lec # 04649

COPY