



STOEPPELWERTH

ALWAYS ON

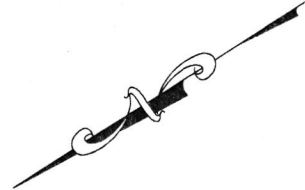
7965 East 106th Street, Fishers, IN 46038-2505
phone: 317.849.5935 fax: 317.849.5942

JOB ID SPRINGBK4.171

CONTROL# 99329 LEN

PARCEL#N/A

8628 KELLNER STREET
PENDLETON, IN 46064



1" = 30'

LOT AREA: 7,800 Sq. Ft.

M.F.F.E.=865.3

M.F.P.G.=863.9

LEGEND:

XX.X

PROPOSED GRADE PER PLAN

XX.XAB

AS BUILT GRADE

S.S.D.

SUB-SURFACE DRAIN

AS

SANITARY SEWER

PSL

6" AS BUILT SANITARY LATERAL

W

6" PROPOSED SANITARY LATERAL

W

STORM SEWER

W

3/4" WATER CONNECTION

W

WATER MAIN

W

SWALE

W

SANITARY MANHOLE

W

STORM MANHOLE

W

CURB INLET

W

FIRE HYDRANT

W

STREET TREE

W

DRAINAGE, UTILITY & SANITARY SEWER EASEMENT

W

DRAINAGE & UTILITY EASEMENT

W

BUILDING LINE

W

MINIMUM FINISHED FLOOR ELEVATION

W

MINIMUM FLOOD PROTECTION GRADE

W

5' SW

W

T.C.=863.41 ±

W

63.36

W

T.C.=863.41 ±

W

5' SW

W

63.95

W

63.7

W

64.0

W

65.1

W

65.1

W

65.1

W

65.1

W

65.1

W

65.1

W

65.1

W

65.1

W

65.1

W

65.1

W

65.1

W

65.1

W

65.1

W

65.1

W

65.1

W

65.1

W

65.1

W

65.1

W

65.1

W

65.1

W

65.1

W

65.1

W

65.1

W

65.1

W

65.1

W

65.1

W

65.1

W

65.1

W

65.1

W

65.1

W

65.1

W

65.1

W

65.1

W

65.1

W

65.1

W

65.1

W

65.1

W

65.1

W

65.1

W

65.1

CONTRACTOR SHALL CUT 6.5' OFF OF LATERAL AND BEGIN FROM THAT POINT AND CONNECT TO HOUSE FOLLOWING PLOT PLAN.

ALL UNDERGROUND SEWERS AND UTILITIES SHOWN ARE PLOTTED BY SCALE FROM DESIGN PLANS FURNISHED BY ENGINEER THE ACTUAL FIELD LOCATION MAY VARY.

LOT 171
SPRINGBROOK
SECTION 4

INST. #2021R019135

ZONING: R3

5' MINIMUM SIDE YARD
30' MINIMUM FRONT YARD
15' MINIMUM REAR YARD



BENCHMARK

TOP OF CURB = 863.95

SOD: 170 ± Sq. Yd.
SEEDING: 4,028 ± Sq. Ft.
SEED IN EASEMENT: 600 ± Sq. Ft.
CONC. DRIVEWAY: 796 ± Sq. Ft.
PRIVATE WALK: 26 ± Sq. Ft.
PUBLIC WALK: 200 ± Sq. Ft.
APRON: 305 ± Sq. Ft.
ADDITIONAL SOD TO: 600 ± Sq. Yd.
REAR EASEMENT
HANDICAP RAMPS: 0

SIGNATURE:

DATE:

SIGNATURE REPRESENTS CONFIRMATION OF RECEIPT OF PLOT PLAN BY CUSTOMER

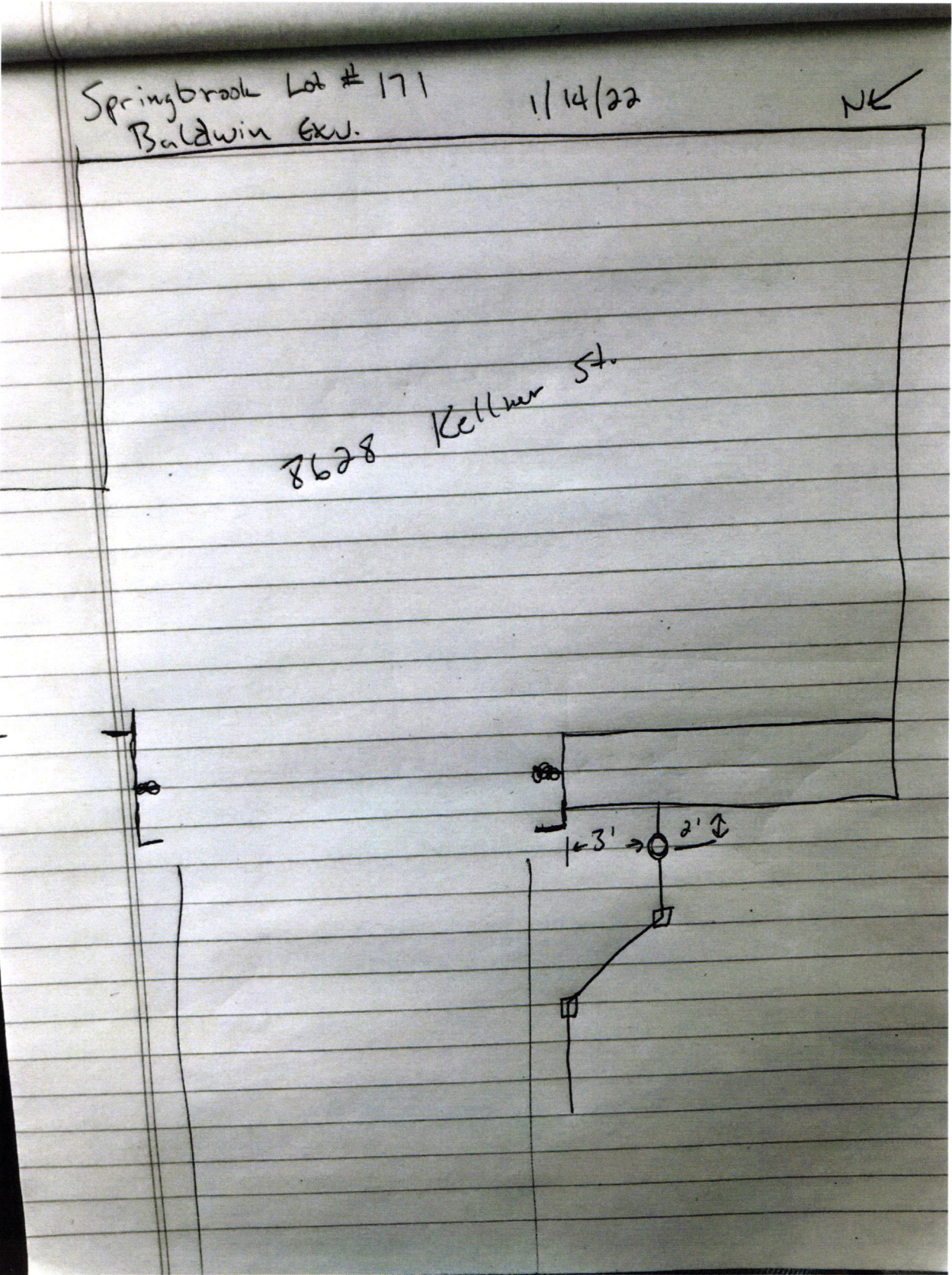


David J. Stoepfelwerth

NOTE: THIS DRAWING IS NOT INTENDED TO BE REPRESENTED AS A RETRACEMENT OR ORIGINAL BOUNDARY SURVEY, A ROUTE SURVEY OR A SURVEYOR LOCATION REPORT.

1ST REV ADD REC INFO
10/08/21 JCS
07/28/21 JRS









Lennar Corporation
Lennar Homes of Indiana, Inc.
Indianapolis Division
11555 N Meridian St Ste 400
Carmel, IN 46032

CHECK
NUMBER 1659223

70-2322

719

August 2, 2021

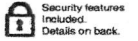
*** VOID AFTER 180 DAYS ***

PAY FALL CREEK REGIONAL WASTE DISTRICT
TO THE PO BOX 59
ORDER OF: PENDLETON, IN 46064

CHECK AMOUNT

\$760.00

EXACTLY *****760 DOLLARS AND 00 CENTS



JPMorgan Chase Bank, N.A.
Chicago, IL

Authorized Signature

Rec# 011883