



PRO

DATE: _____

CONSTRUCTION SERVICES

- RESIDENTIAL
- COMMERCIAL
- MUNICIPAL
- INDUSTRIAL

GENERAL CONSTRUCTION

SITE CONSTRUCTION
AND GRADING

WATER MAINS & SERVICES

BOOSTER PUMP STATIONS

SANITARY MAINS & SERVICES

LIFT STATIONS & GRINDERS

STORM SEWER

CONCRETE WORK

STEEL BUILDINGS

HYDRO-EXCAVATING

PIPELINE SERVICES

VALVE INSERTION

LINE STOPPING

PRESSURE/HOT TAPS

LEAK DETECTION

PRESSURE TESTING

CHLORINATION AND

DECHLORINATION

COMMERCIAL DIVING

SPECIAL SERVICES

MANHOLE RELINING

CEMENTITIOUS/EPOXY

INJECTION GROUTING

CHIMNEY SEALS

MANHOLE CASTING REPAIR

AND REPLACEMENT

PIPELINE ACCESSMENT

PIPE PATCH

HYDRO-VAC

SEWER CLEANING

SEWER TELEVISION

PUMP & EQUIPMENT REPAIRS

24 HOUR EMERGENCY

CONTACT AND SERVICE

OSHA SAFETY TRAINED

PH: (765) 584-8509

FAX: (765) 584-8060

5 INDUSTRIAL PARK DRIVE

P.O. BOX 29

WINCHESTER, IN 47394

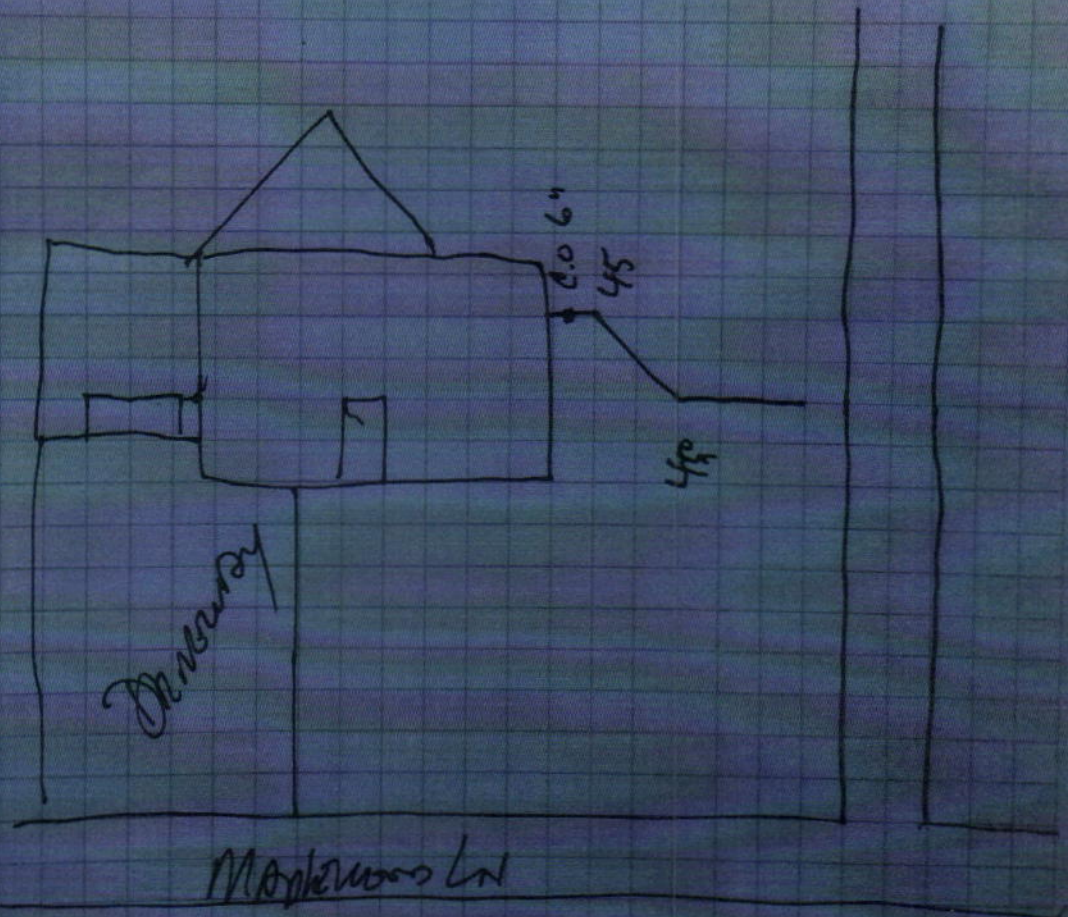
www.culycontracting.com

Huntz F.

1614 Markerswood

Lot 54

DR Watson LLC.



ARBOR HOMES, L.L.C.

PERMIT ACCOUNT

6626 E. 75TH STREET, SUITE 400
INDIANAPOLIS, IN 46250



First Merchants Bank
www.firstmerchants.com

028907

PAY
TO THE
ORDER OF

DATE 6/7/2016

\$ 3,370.00

Fall Creek Regional Waste District
Three Thousand Three Hundred And Seventy Dollars And 0/100 DOLLARS

FOR HUNTZ 54



BY:

AUTHORIZED SIGNATURE

NOT VALID FOR AMOUNTS OVER \$10,000

Rec. # 010482