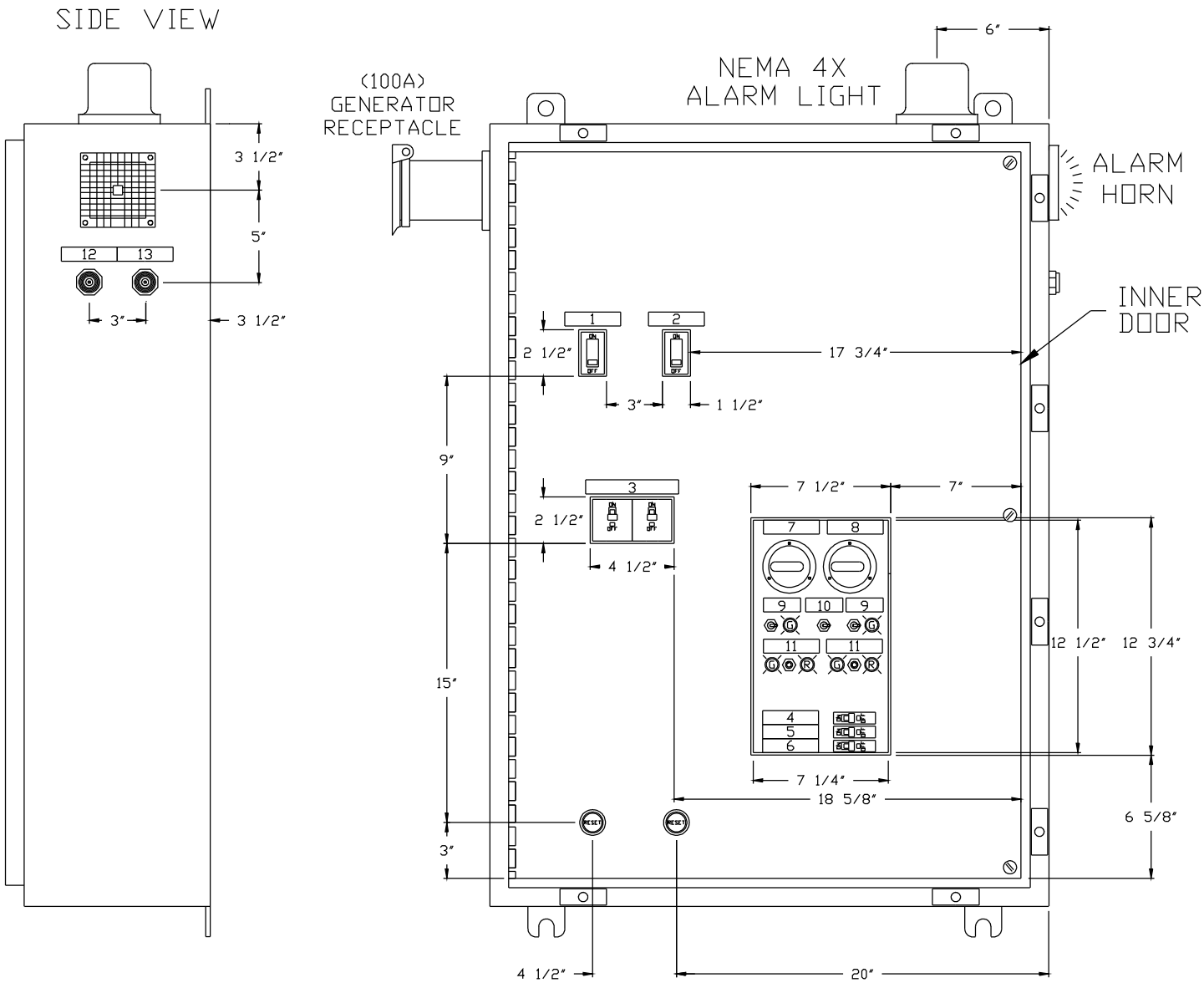
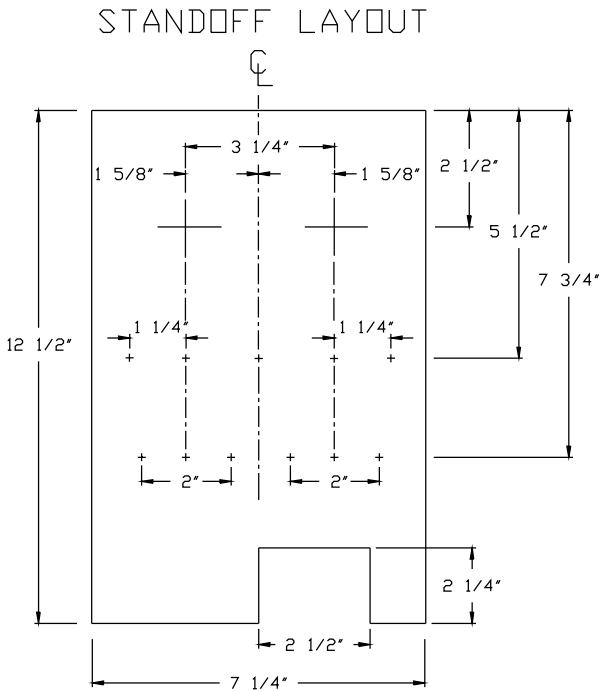
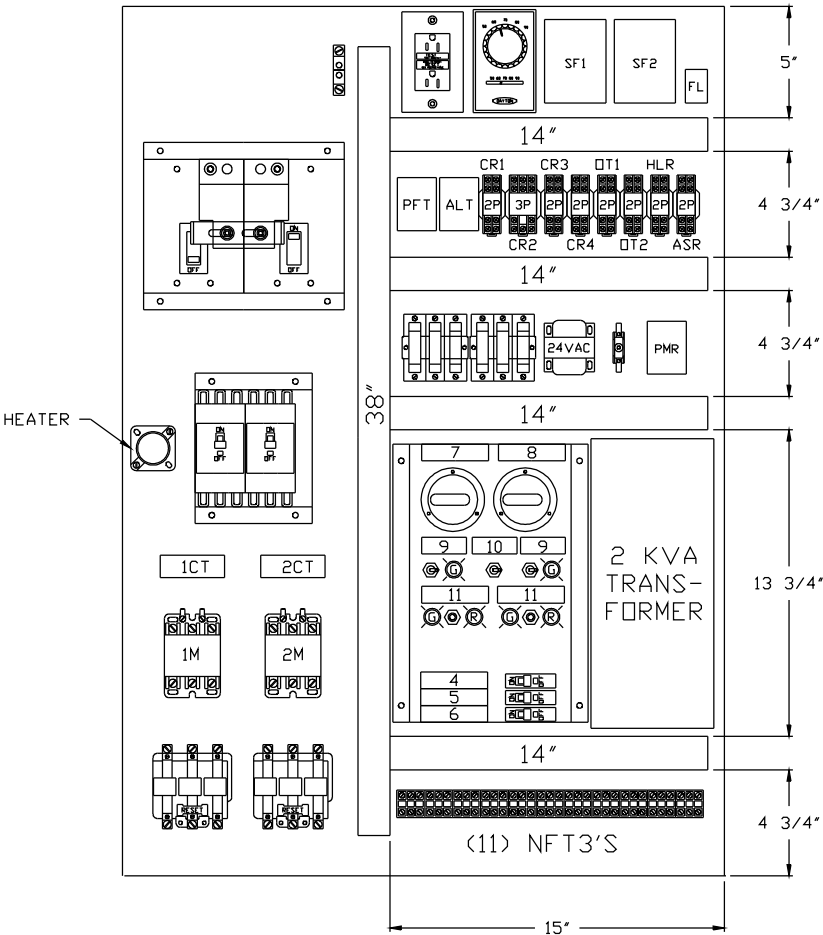


NEMA 4X STAINLESS STEEL ENCLOSURE
42"H X 30"W X 10"DP
OUTER DOOR NOT SHOWN



BACK PANEL LAYOUT
39"H X 27"W



NAMEPLATE LEGEND

- | | |
|--------------------|----------------------|
| 1. EMERGENCY | 8. PUMP 2 RTM |
| 2. NORMAL | 9. HOA RUN |
| 3. PUMP 1 PUMP 2 | 10. 1-2 AUTO 2-1 |
| 4. CONTROL | 11. NORMAL TEST FAIL |
| 5. 120 CONVENIENCE | 12. ALARM TEST |
| 6. REMOTE MONITOR | 13. ALARM SILENCE |
| 7. PUMP 1 RTM | |

REV. NO.	REVISION	BY CHK'D	DATE	DESIGNED BY:	DATE	BBC PUMP AND EQUIPMENT COMPANY, Inc. 1125 W. 16th St. P.O. BOX 22098 Indianapolis, Indiana 46222 317/636-1111	
				MA	3/12		
				DRAWN BY:	DATE	DESCRIPTION	
				JZ	93		
				CHECKED BY:	DATE	STAMP CO/HUNTS #31 BBC #16644	
				SCALE		DWG. NO.	JOB NO.
						PNL 13516	

***** Print date 9/3/03/12 11:57:49 *****
 JSEMCO INCORPORATED
 BILL OF MATERIAL REPORT
 MULTI LEVEL BILL OF MATERIAL
 EFFECTIVITY DATE: 03/11/93
 DATE: 03/11/93 PAGE: 1

ITEM ID	PIECE #	QTY PER	SCRAP QTY	SCRAP RATE	BOM REV	EFFECT DATE	DISCONT DATE (REV	EFF CODE)	U/M	ITEM LT	OFF SET
13516	STAMPED/HUNTS #31; BBC #16644 DUPLEX "INDY" 230V 3PH 5HP								EA	0	
13516-0001	SHIP LOOSE 100 AMP DISCONNECT	1.0000	0.0000	0.000					EA	0	0
421836	BREAKER 3 PL MLD CA FAL 32100	1.0000	0.0000	0.000					EA	5	0
421868	ENCL CKT BRKR SCD# FA100DS	1.0000	0.0000	0.000					EA	1	0
421890	NEUTRAL ASSY SCD# SN100FA	1.0000	0.0000	0.000					EA	1	0
322268	HORN 120VAC FARADAY 6110	1.0000	0.0000	0.000					EA	5	0
	CAT. #6110B-0-0-120-60										
322276.2	LIGHT ALARM AC-DC #BL5R-120VAC	1.0000	0.0000	0.000					EA	5	0
365285	NUTSERT 8385B 1/4-20	3.0000	0.0000	0.000					EA	5	0
365290	SCREW UNICORP 4149-M07-F09 S/S	3.0000	0.0000	0.000					EA	5	0
365291	RETAINER UNICORP 41R30-M07-F09	3.0000	0.0000	0.000					EA	5	0
420410	ROD RESET SINGLE SCD 9066 RA-1	2.0000	0.0000	0.000					EA	1	0
421100	CTR DP 3PL 20A 8910 DFA13V02	2.0000	0.0000	0.000					EA	1	0
421503	BREAKER DOOR MOUNT SCD GOU-115	2.0000	0.0000	0.000					EA	1	0
421506	BREAKER DOOR MOUNT SCD GOU-120	1.0000	0.0000	0.000					EA	5	0
421514	BREAKER DOOR MOUNT SCD GOU-330	2.0000	0.0000	0.000					EA	5	0
421836	BREAKER 3 PL MLD CA FAL 32100	2.0000	0.0000	0.000					EA	5	0
422307.1	RELAY 10A BLTEC 8302-T-120VAC	2.0000	0.0000	0.000					EA	1	0
	20,000 OHM - 2 N.O. CONTACTS										
422339.10	RELAY 10A IDEC RH2B-U-AC120V	5.0000	0.0000	0.000					EA	1	0
422339.12	RELAY 10A IDEC RH2B-U-AC24V	2.0000	0.0000	0.000					EA	5	0
422339.22	RELAY 10A IDEC RH3B-U-AC24V	1.0000	0.0000	0.000					EA	5	0
422345	RELAY ALT 10A DIV #ARA-120-ABA	1.0000	0.0000	0.000					EA	1	0

***** Print date 93/03/12 11:57:49 *****
 JSEMD INCORPORATED
 BILL OF MATERIAL REPORT
 MULTI LEVEL BILL OF MATERIAL EFFECTIVITY DATE: 03/11/93
 DATE: 03/11/93 PAGE: 2

ITEM ID	PIECE #	QTY PER	SCRAP QTY	SCRAP RATE	BOM REV	EFFECT DATE	DISCONT DATE	EFF CODE	U/M	ITEM LT	OFF SET
422348	RELAY PH MNTR DIV #SLA-230-ASA	1.0000	0.0000	0.000					EA	1	0
422405	RELAY OVERLOAD #9065 SED-5	2.0000	0.0000	0.000					EA	5	0
423385.1	ARRESTOR LIGHTNING 4W 480V	1.0000	0.0000	0.000					EA	3	0
	RED JACKET #104-018-5										
423409.1	BLOCK TERMINAL CONNECTRON NFT3	11.0000	0.0000	0.000					EA	1	0
423480.2	SOCKET RD 8 PIN IDEC SFC2P-06	3.0000	0.0000	0.000					EA	1	0
423484	SOCKET MIDGET 2P IDEC SH2B-05	7.0000	0.0000	0.000					EA	1	0
423485	SOCKET MIDGET 3P IDEC SH3B-05	1.0000	0.0000	0.000					EA	1	0
423502	THERMOSTAT 15A SPDT WWS #2E15B	1.0000	0.0000	0.000					EA	1	0
423635	OVERLOAD SCD #B25.0	6.0000	0.0000	0.000					EA	5	0
424164	INTERLOCK CIRCUIT BREAKER-FAL	1.0000	0.0000	0.000					EA	1	0
425012.00	TIMER 120VAC DIV. TBC-120-ABA	1.0000	0.0000	0.000					EA	5	0
	ON DELAY										
425079	FLASHER 120VAC SSAC FS127	1.0000	0.0000	0.000					EA	5	0
425200.0	RTM 120VAC 60HZ ENM #T50E2	2.0000	0.0000	0.000					EA	5	0
425302	TRNSFMR 2KVA ACME T2-53012-S	1.0000	0.0000	0.000					EA	5	0
425337	TRANSFORMER 40VA #S84Z-90	1.0000	0.0000	0.000					EA	5	0
	GRAINGER STOCK #2A245										
425395	TRNSFMR CURRENT MIDWEST 3CT63	2.0000	0.0000	0.000					EA	5	0
	30/5 RATIO (6) PRIMARY TURNS										
426000	FUSE 250V BUSS NON 1	3.0000	0.0000	0.000					EA	5	0
426104	FUSE 250V FUSETRON FRNR 3	1.0000	0.0000	0.000					EA	5	0
426111	FUSE 250V FUSETRON FRNR 10	2.0000	0.0000	0.000					EA	1	0
426522	BLOCK FUSE MARATHON F30A3S	2.0000	0.0000	0.000					EA	5	0

***** Print date 93/03/12 11:57:49 *****

USEMCO INCORPORATED
 BILL OF MATERIAL REPORT
 MULTI LEVEL BILL OF MATERIAL EFFECTIVITY DATE: 03/11/93
 DATE: 03/11/93 PAGE: 3

ITEM ID	PIECE #	QTY PER	SCRAP QTY	SCRAP RATE	BOM REV	EFFECT DATE	DISCONT DATE	EFF CODE	U/M	ITEM LT	OFF SET
426525	BLOCK FUSE LITTLEFUSE 3548126Y	1.0000	0.0000	0.000					EA	1	0
428905.1	WIRE DUCT BODY TYTON SL1.5X36	7.0000	0.0000	0.000					FT	5	0
428908.1	WIRE DUCT COVER TYTON TC1.56	7.0000	0.0000	0.000					FT	5	0
429105	DECAL USEMCO LIMITED WARRANTY	1.0000	0.0000	0.000					EA	5	0
445041	FUSE SLO BLD 2.5A 250V	1.0000	0.0000	0.000					EA	1	0
	LITTLEFUSE #31302.5 3AG										
461022	BSHG KNOCKOUT T&B #3210 1/2	2.0000	0.0000	0.000					EA	5	0
462003	BOX JUNCTION 2X4 RACO 670	2.0000	0.0000	0.000					EA	5	0
462340.21	RECEPT CROUSE-HINDS AR1042-522	1.0000	0.0000	0.000					EA	30	0
	100 AMP 3 WIRE 4 POLE										
462357	RECEP GFI 15A 120V SIR-15-F-IV	1.0000	0.0000	0.000					EA	1	0
462849.3	ENCL N4X SNGL HOF A42H30106SLP	1.0000	0.0000	0.000					EA	5	0
463219	ENCL BP HOF A42P30	1.0000	0.0000	0.000					EA	1	0
469004	LUG ALUM SOLDERLESS MAX. #2	4.0000	0.0000	0.000					EA	5	0
469005.0004	LUG POWER KIT SOD #PDC3FA2	1.0000	0.0000	0.000					EA	5	0
469070	HEATER PANEL 120V CHRO SCB-100	1.0000	0.0000	0.000					EA	5	0
469071	LAMPHOLDER PORCELAIN KEYLESS	1.0000	0.0000	0.000					EA	5	0
	CLEAT MEDIUM EDISON SCREW BASE CHALLENGER #226 80845-0										
470401	SWITCH TOG SPDT 3 POS #91-0003	2.0000	0.0000	0.000					EA	5	0
	20 AMP ON OFF ON										
470406	SWITCH TOG SP3T 3 POS 26E64-73	1.0000	0.0000	0.000					EA	1	0
470500.1	SWITCH PB SOD 9001 SKR-1U	2.0000	0.0000	0.000					EA	5	0
	NEMA 4X CORROSION RESISTANT										
470561	SWITCH PB C-H 8411K12 NO	2.0000	0.0000	0.000					EA	1	0

***** Print date 93/03/12 11:57:49 *****
 USEMCO INCORPORATED
 BILL OF MATERIAL REPORT
 MULTI LEVEL BILL OF MATERIAL
 EFFECTIVITY DATE: 03/11/93
 DATE: 03/11/93 PAGE: 4

ITEM ID	PIECE #	QTY PER	SCRAP QTY	SCRAP RATE	BOM REV	EFFECT DATE	DISCONT DATE	EFF CODE	U/M	ITEM LT	OFF SET
472081	BLOCK CONTACT SCD 9001 KA-2	2.0000	0.0000	0.000					EA	5	0
480110.1	LIGHT IND #930-405X-710RN-120	2.0000	0.0000	0.000					EA	1	0
480111.1	LIGHT IND #930-405X-710GN-120	4.0000	0.0000	0.000					EA	1	0
500563	INNERDOOR 42x30x08 N4&12 10"DP	1.0000	0.0000	0.000					EA	1	0
140800.99	SHEET STL HR 14GA A36-GENERIC	23.0131	0.0000	0.000					LB	1	0
328000.0001	HINGE CONTINUOUS #1205	38.0000	0.0000	0.000					IN	5	0
500578	LEG, INNER DOOR 8" HIGH	3.0000	0.0000	0.000					EA	1	0
141300.036	STRIP STL HR .125X1	0.3807	0.0000	0.000					LB	1	0
500583.12	STANDOFF 00U7 FOR 8" DEPTH	1.0000	0.0000	0.000					EA	5	0
140800.99	SHEET STL HR 14GA A36-GENERIC	2.0255	0.0000	0.000					LB	1	0
500584.20	STANDOFF FAL INTERLOCK - 8"	1.0000	0.0000	0.000					EA	5	0
140800.99	SHEET STL HR 14GA A36-GENERIC	3.1300	0.0000	0.000					LB	1	0
500587.01	STANDOFF "INDY" FOR 8" DEPTH	1.0000	0.0000	0.000					EA	5	0
140800.99	SHEET STL HR 14GA A36-GENERIC	6.6566	0.0000	0.000					LB	1	0