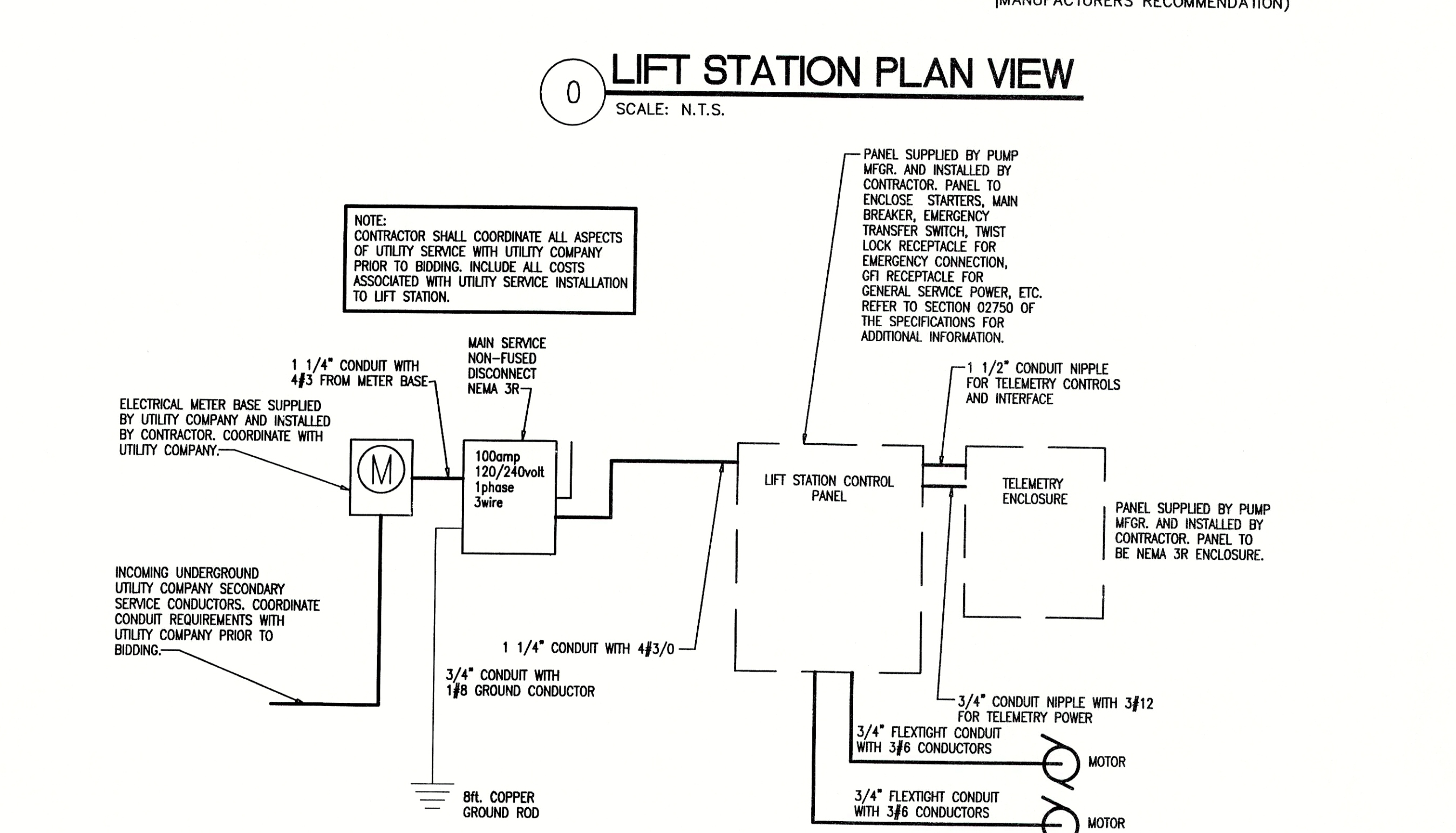
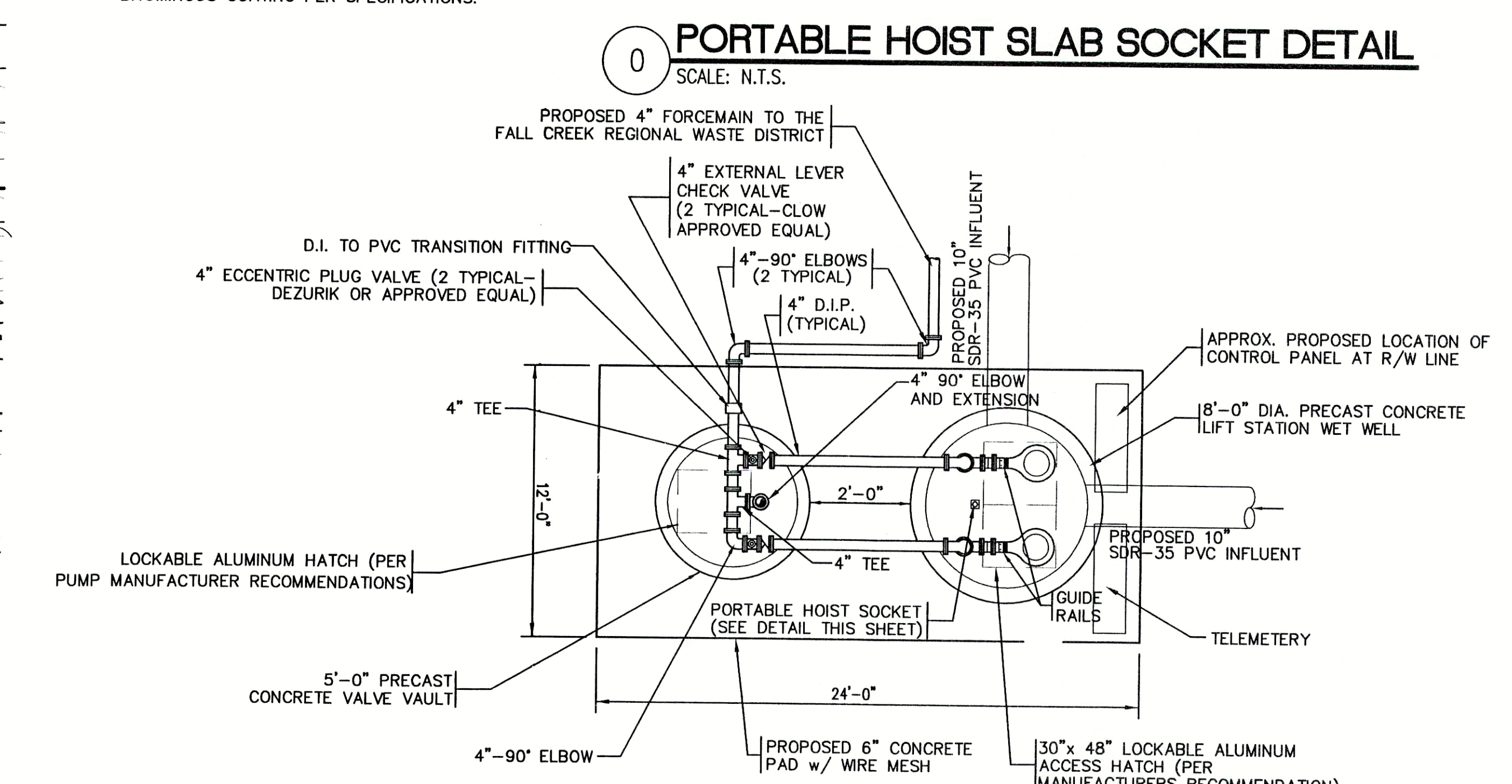
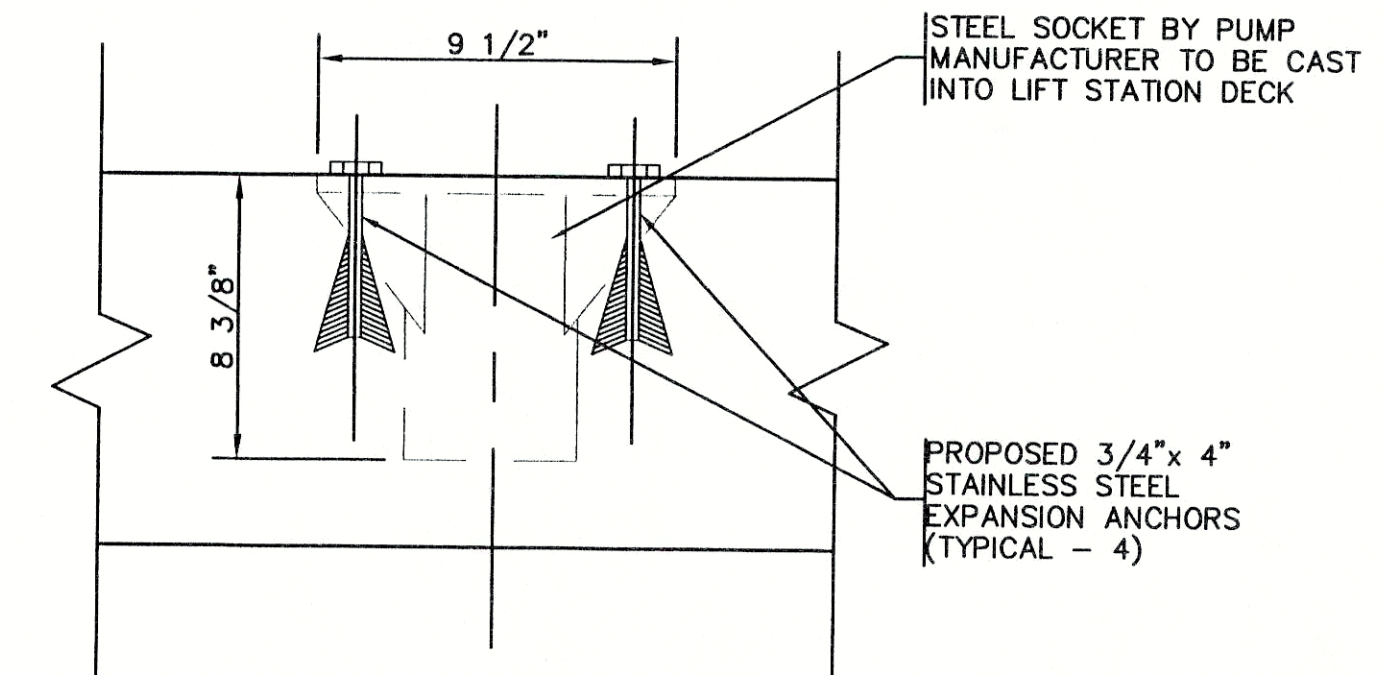


# **RECORD DRAWING** February 15, 2001

- GENERAL NOTES:**
- CONTRACTOR TO VERIFY AVAILABLE POWER SOURCE PRIOR TO EQUIPMENT ORDER AND COORDINATE WORK WITH ELECTRIC UTILITY COMPANY.
  - PIPE PENETRATIONS TO UTILIZE FLEXIBLE BOOTS, CONNECTORS, CAST IN PLACE GASKETS, ETC. APPROVED BY ENGINEER PRIOR TO CONSTRUCTION.
  - CONTRACTOR TO INSTALL ALL EQUIPMENT IN COMPLETE ACCORDANCE WITH ALL MANUFACTURER'S RECOMMENDATIONS.
  - ALL FASTENERS, SUPPORTS, ETC. TO BE STAINLESS STEEL.
  - REFER TO SPECIFICATIONS FOR FURTHER INFORMATION.
  - ALL CONCRETE TO BE MINIMUM F<sub>c</sub> = 4000 PSI. ALL REINFORCING STEEL TO BE MINIMUM F<sub>y</sub> = 60,000 PSI.
  - ALL FERROUS METAL SURFACES TO BE PREPARED AND PAINTED.
  - CONTRACTOR TO COORDINATE WITH ALL OTHER APPLICABLE PLAN SHEETS AND SPECIFICATIONS.
  - CONTRACTOR TO TEST ALL EQUIPMENT, PIPING, STRUCTURES, ETC. IN ACCORDANCE WITH THE SPECIFICATIONS, PRIOR TO PLACING THE STATION INTO SERVICE IN THE PRESENCE OF ENGINEERS AND MANUFACTURERS REPRESENTATIVES.
  - CONCRETE STRUCTURE BELOW GRADE SHALL BE COATED WITH A BITUMINOUS COATING PER SPECIFICATIONS.



FILE NAME: REVSHI_4-RD	PLOT SCALE: 1"=1	PLOT DATE: 12/5	<b>TRIAD ASSOCIATES INC.</b> INDIANAPOLIS, INDIANA	APPROVED BY Thomas M. Schubert, P.E.	WOODED RIDGE SUBDIVISION FALL CREEK REGIONAL WASTE DISTRICT	
03/16/00 ELEVATION CHANGE	D.A.P.	LIFT STATION DETAIL				
03/16/00 PIPE SIZE CHANGE	D.A.P.	DRAWN BY: DAP DATE: 4/12/98 PROJECT No. 98008A SHEET No. 16				
DESIGNED BY: D.A. Pauling			CHECKED BY: James W. Frazell, P.E.			