


PLOTTED BY: Johnson

PRINTED: 12/19/2019 @ 4:51 PM

FILE NAME: G:\4635-FORWD-US 36\Working Drawings\AutoCAD\4635-C-17.dwg

THIS RECORD DOCUMENT HAS BEEN PREPARED BASED ON INFORMATION PROVIDED BY THE CONSTRUCTION CONTRACTOR. GRW ENGINEERS, INC. HAS ATTEMPTED TO VERIFY THE ACCURACY AND/OR COMPLETENESS OF THIS INFORMATION BUT SHALL NOT BE RESPONSIBLE FOR ANY ERRORS OR OMISSIONS WHICH MAY BE INCORPORATED HEREIN AS A RESULT.

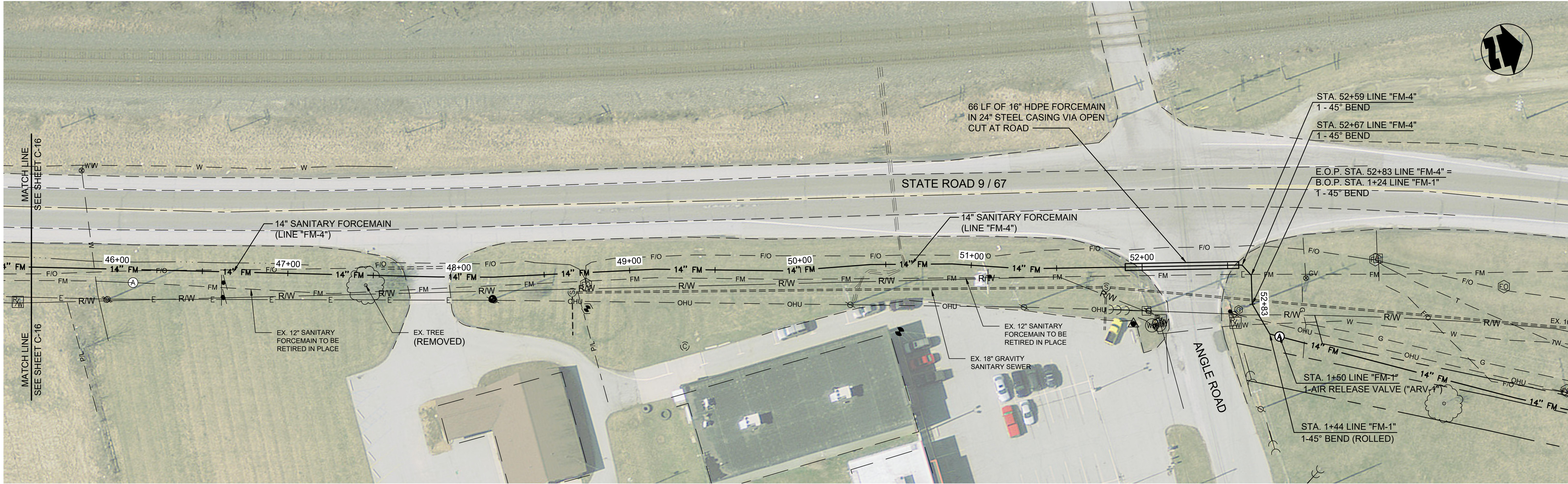


engineering | architecture | geospatial

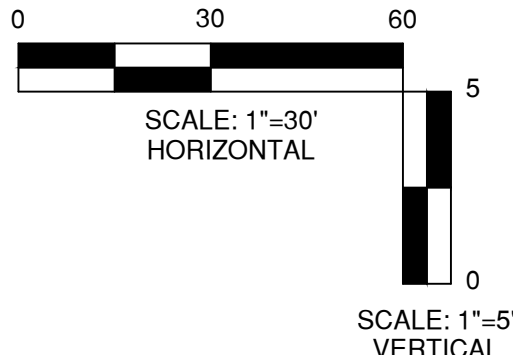
ENGINEER/ARCHITECT: GEORGE LEWIS

CONSTRUCTION COMPANY: S.C. CASE EXCAVATING

DATE: 12/2019



PLAN VIEW - STA. 45+50 TO E.O.P. STA. 52+83 LINE "FM-4"




This document, originally issued, sealed, and signed by George W. Lewis, Indiana Professional Engineer, No. 10403303, on 7.2.2018, shall not be used in lieu of a certified document.

GRW PROJECT NO. 4635

CLIENT PROJECT NO. -

ALL RIGHTS RESERVED. THIS DOCUMENT IS THE PROPERTY OF GRW ENGINEERS, INC. IT IS TO BE REPRODUCED IN WHOLE OR IN PART WITHOUT WRITTEN PERMISSION FROM GRW ENGINEERS, INC.



engineering | architecture | geospatial

www.grwinc.com

DESIGNED: **GWL**

DRAWN: **JRD**

REVIEWED: **GWL**

APPROVED: **GWL**

NO.	DATE	DESCRIPTION

SCALE CHECK: \_\_\_\_\_ THIS MARK SHOULD MEASURE EXACTLY 1" WHEN PLOTTED

DATE: **JULY 2018**

SCALE: **1"=30'**

SHEET NO. **C-17**