


PLOTTED BY: Johnson

PRINTED: 12/19/2019 @ 4:50PM

FILE NAME: G:\4635-FCRWD-US 36\Working Drawings\AutoCAD\4635-C-15.dwg

THIS RECORD DOCUMENT HAS BEEN PREPARED BASED ON INFORMATION PROVIDED BY THE CONSTRUCTION CONTRACTOR. GRW ENGINEERS, INC. HAS ATTEMPTED TO VERIFY THE ACCURACY AND/OR COMPLETENESS OF THIS INFORMATION BUT SHALL NOT BE RESPONSIBLE FOR ANY ERRORS OR OMISSIONS WHICH MAY BE INCORPORATED HEREIN AS A RESULT.

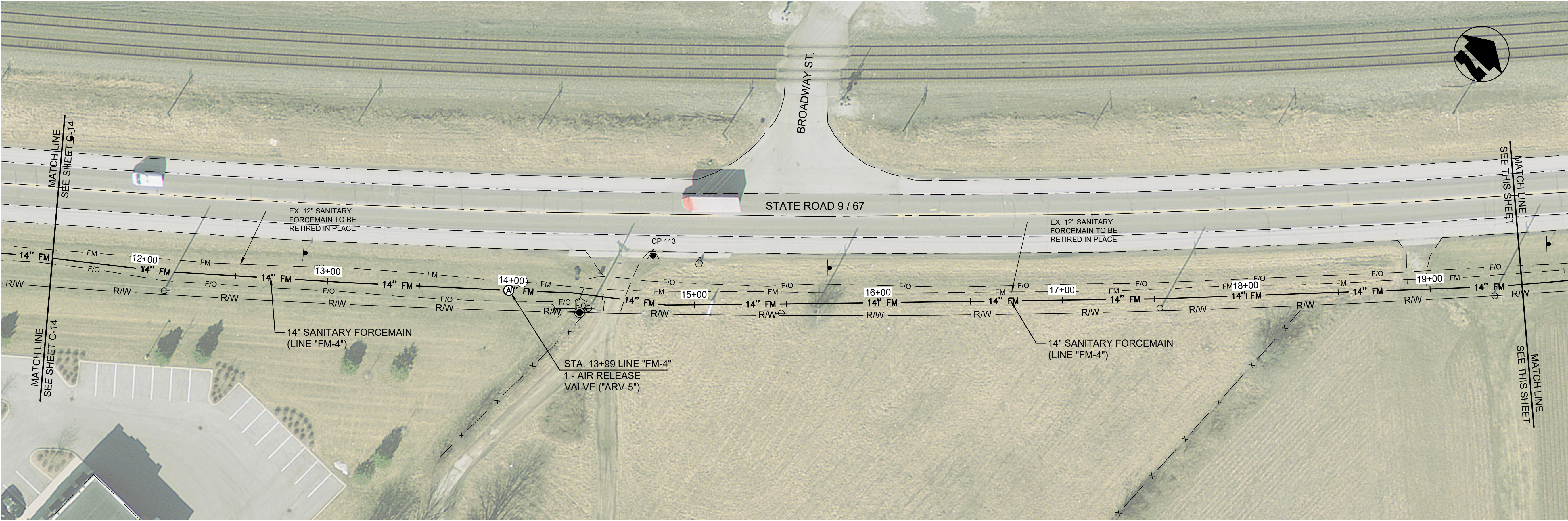


engineering | architecture | geospatial

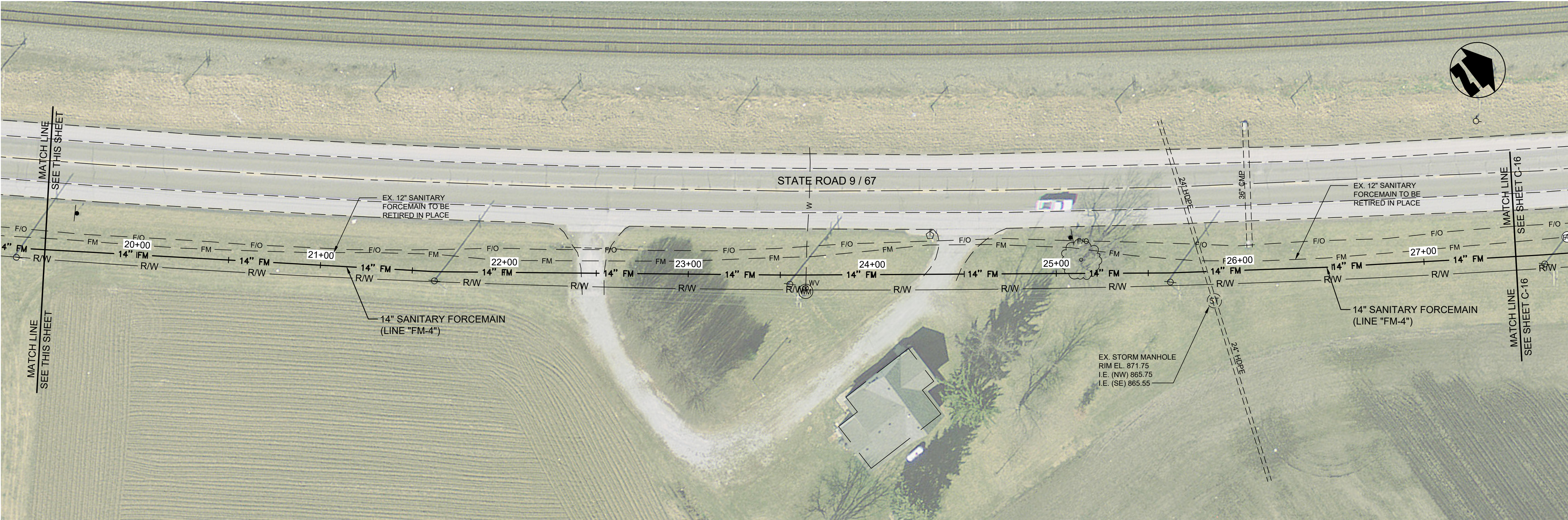
ENGINEER/ARCHITECT: GEORGE LEWIS

CONSTRUCTION COMPANY: S.C. CASE EXCAVATING

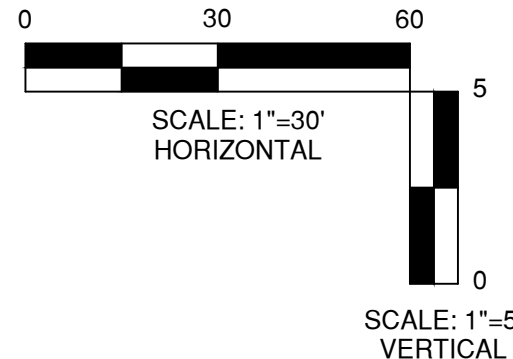
DATE: 12/2019



PLAN VIEW - STA. 11+50 TO STA. 19+50 LINE "FM-4"



PROFILE - STA. 19+50 TO STA. 27+50 LINE "FM-4"



This document, originally issued, sealed, and signed by George W. Lewis, Indiana Professional Engineer, No. 10403303, on 7.2.2018, shall not be used in lieu of a certified document.

GRW PROJECT NO. 4635
 CLIENT PROJECT NO. -
 ALL RIGHTS RESERVED.
 THIS DOCUMENT IS THE PROPERTY OF GRW ENGINEERS, INC. IT IS TO BE REPRODUCED IN WHOLE OR IN PART WITHOUT WRITTEN PERMISSION.



engineering | architecture | geospatial

www.grwinc.com

PLAN
 US 36 FORCEMAIN REPLACEMENT
 TOWN OF PENDLETON, INDIANA

DESIGNED		DRAWN		REVIEWED		APPROVED	
NO.	DATE	BY	DATE	BY	DATE	BY	DATE

REVISIONS
 DESCRIPTION
 NO.

DATE
 JULY 2018

SCALE:
 1"=30'

SHEET NO.
 C-15

THIS MARK SHOULD MEASURE EXACTLY 1" WHEN PLOTTED
 SCALE CHECK