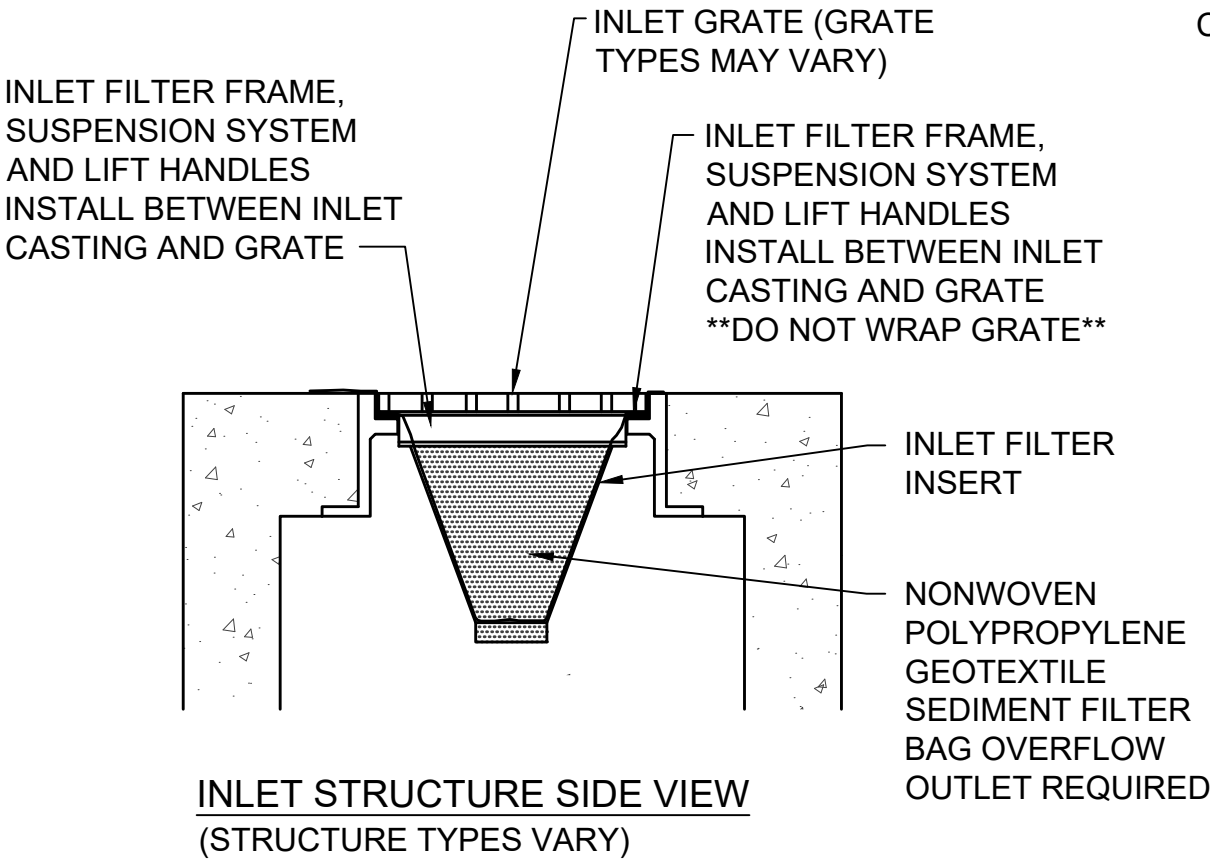
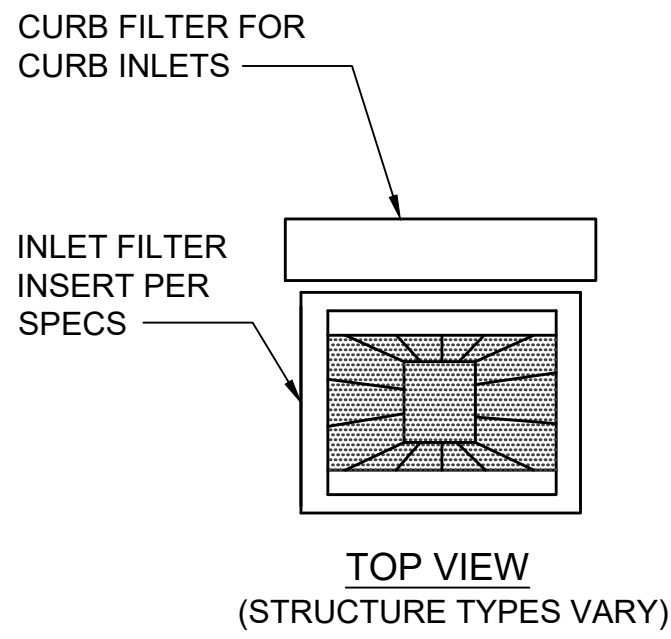


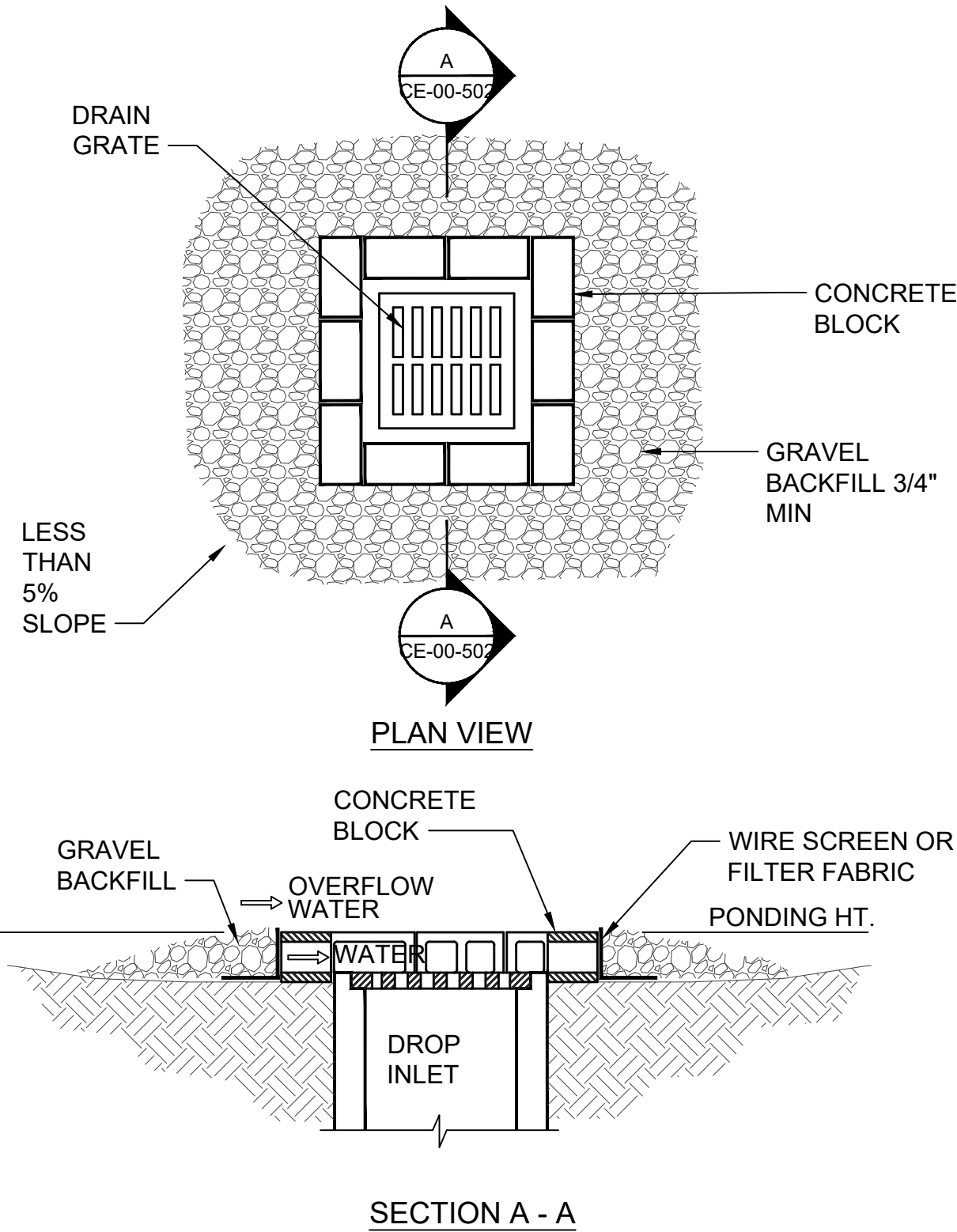
PLOTTED BY: Johnson

PRINTED: 12/19/2019 @ 4:49PM

FILE NAME: G:\4635-FCRWD-US 36\Working Drawings\AutoCAD\4635-C-13.dwg

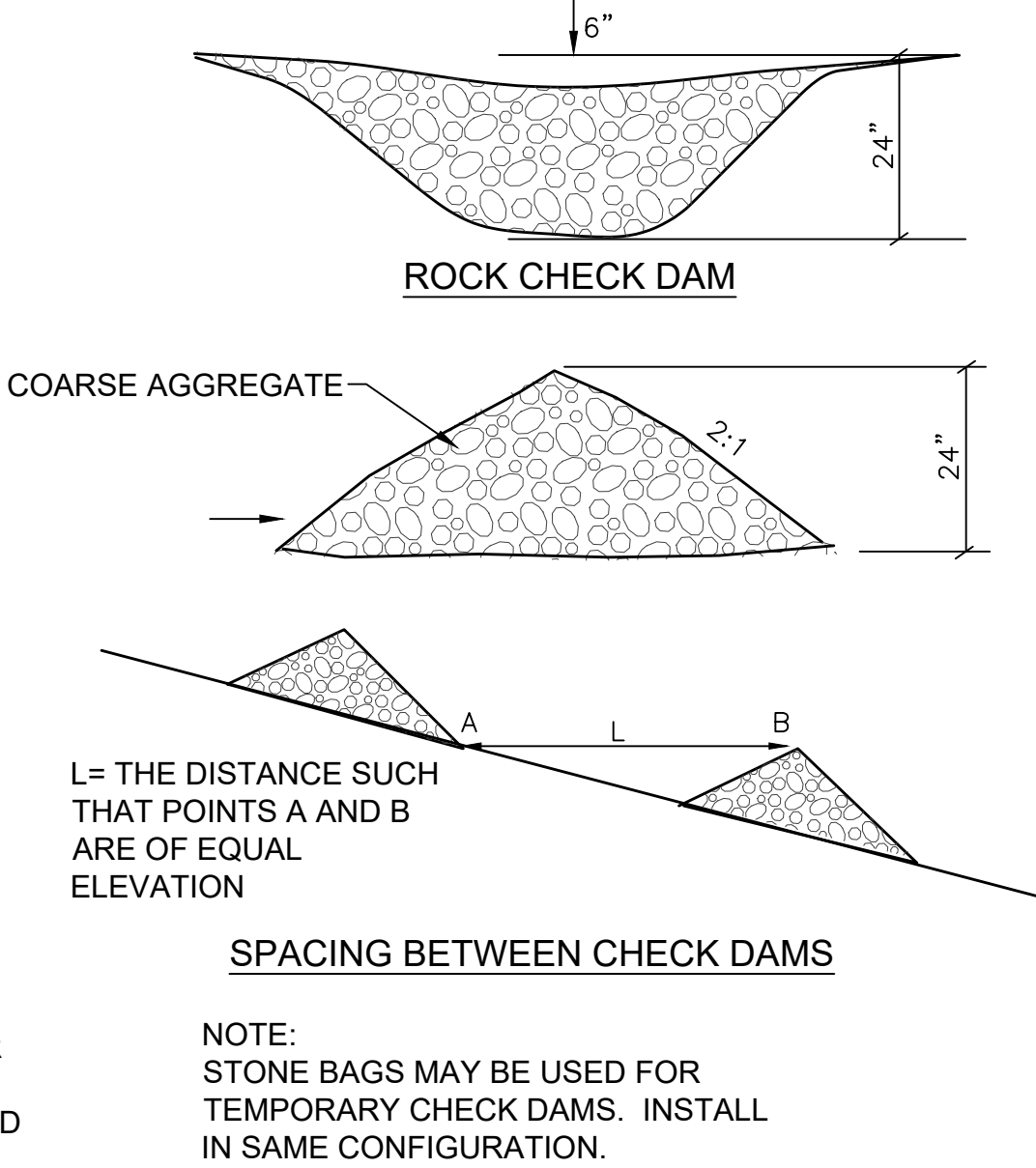


FLEXSTORM OR APPROVED EQUAL
INLET FILTER INSERT
 NOT TO SCALE

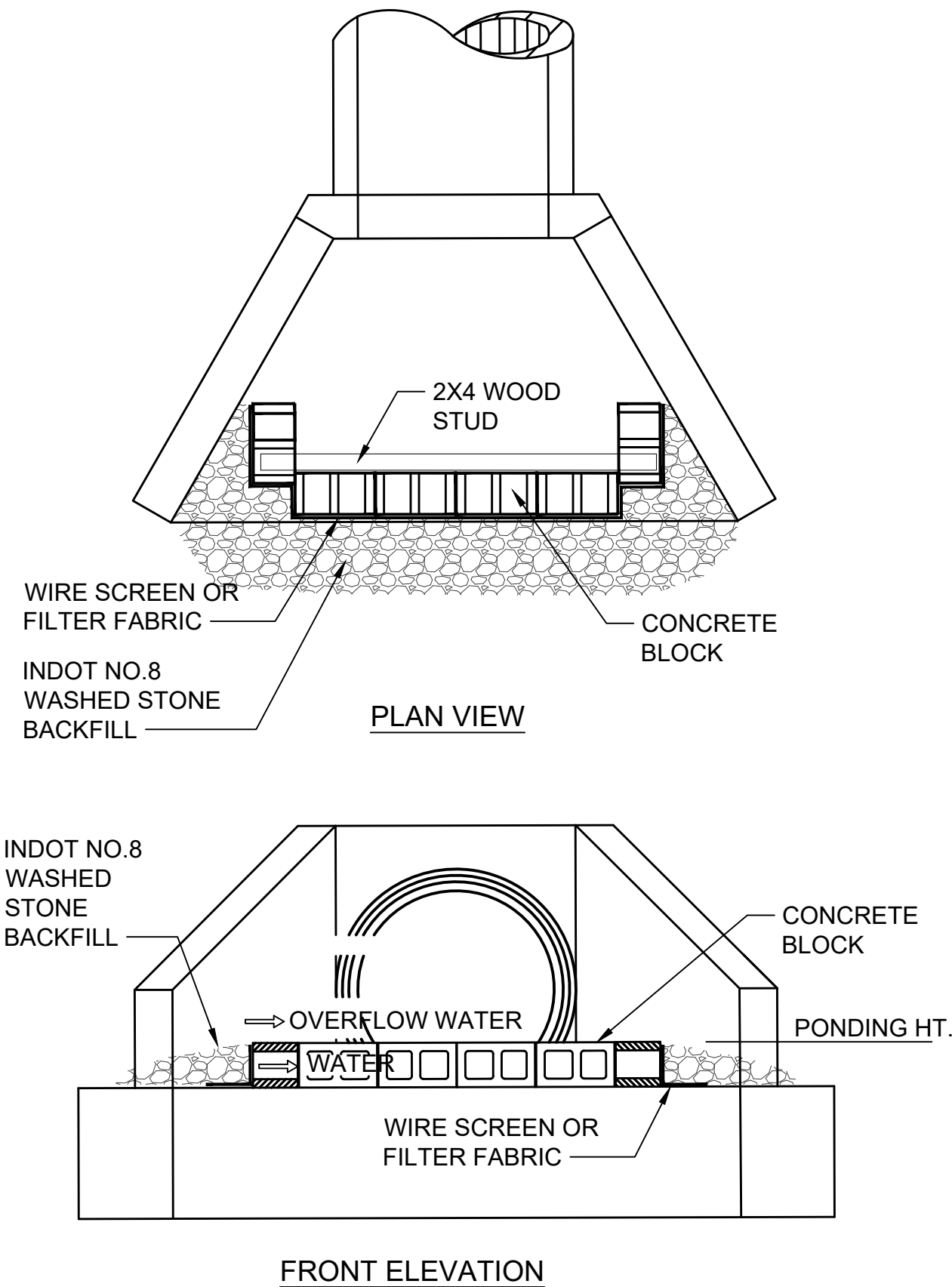


- NOTES:
- DROP INLET SEDIMENT BARRIERS ARE TO BE USED FOR SMALL, NEARLY LEVEL DRAINAGE AREAS (LESS THAN 5%).
 - EXCAVATE A BASIN OF SUFFICIENT SIZE ADJACENT TO THE DROP INLET.
 - THE TOP OF THE STRUCTURE (PONDING HEIGHT) MUST BE WELL BELOW THE GROUND ELEVATION DOWNSLOPE TO PREVENT RUNOFF FROM BYPASSING THE INLET. A TEMPORARY DIKE MAY BE NECESSARY ON THE DOWNSLOPE SIDE OF THE STRUCTURE.

DROP INLET SEDIMENT BARRIER
 NOT TO SCALE



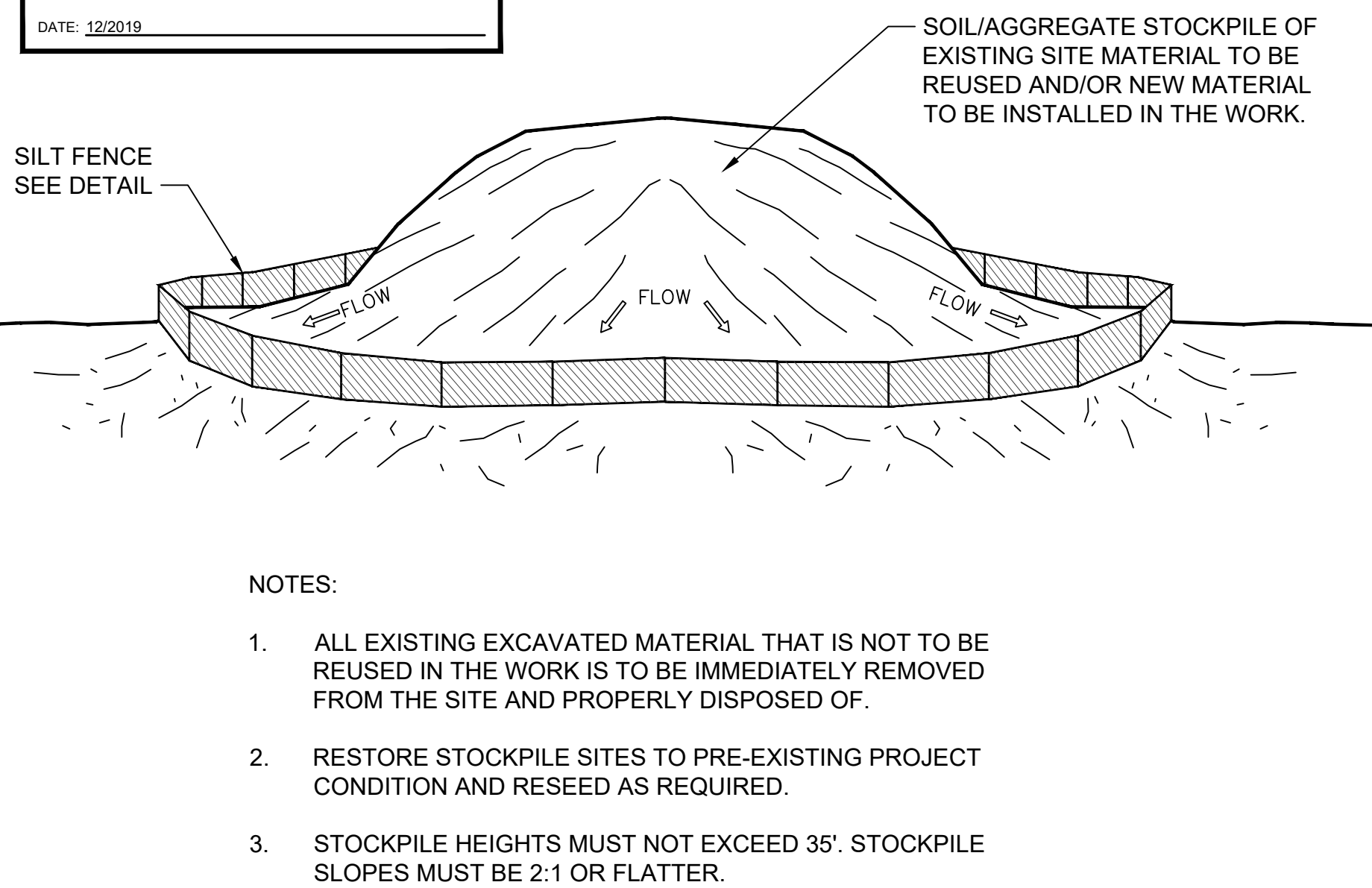
CHECK DAM DETAILS
 NOT TO SCALE



CULVERT INLET SEDIMENT BARRIER
 NOT TO SCALE

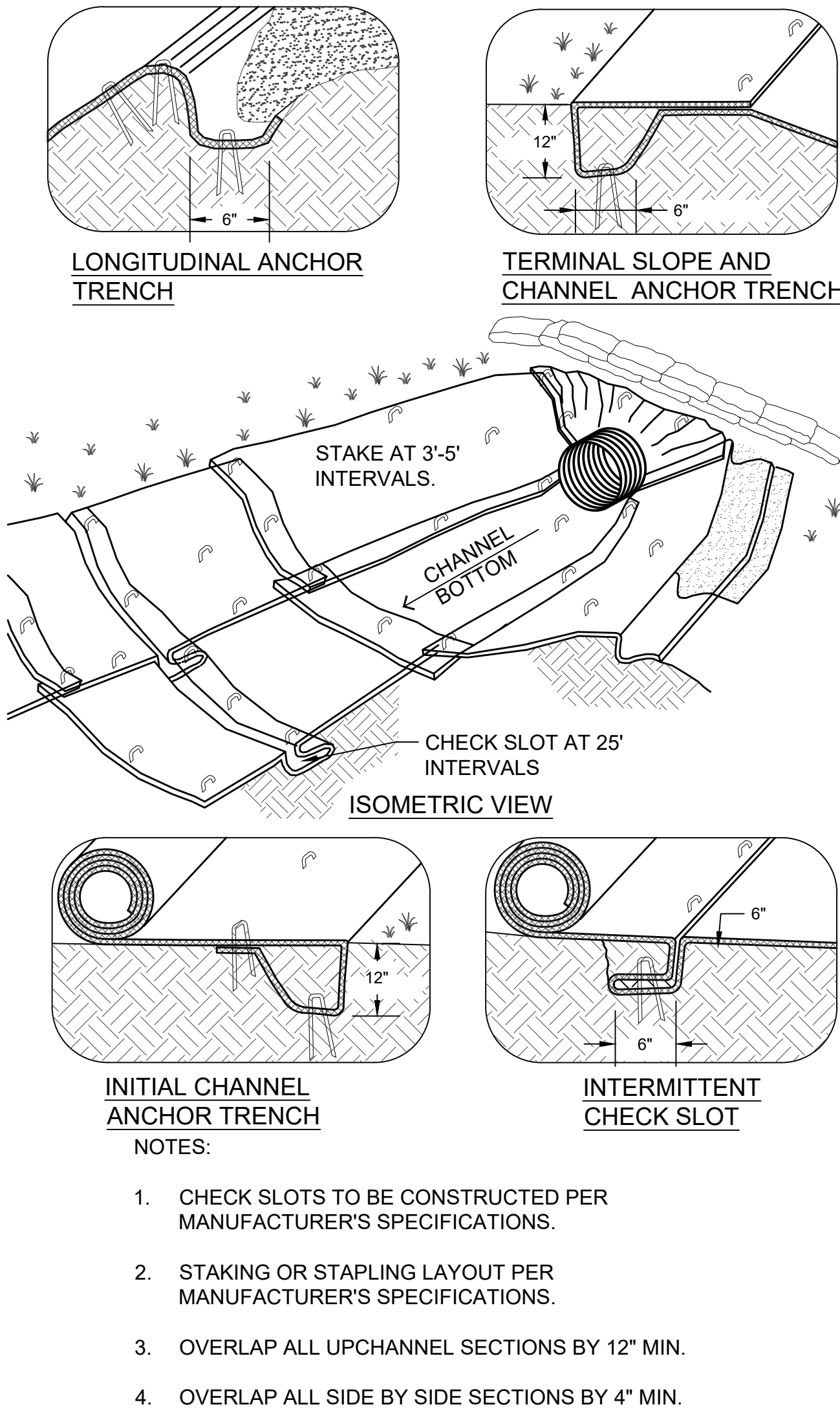
THIS RECORD DOCUMENT HAS BEEN PREPARED BASED ON INFORMATION PROVIDED BY THE CONSTRUCTION CONTRACTOR. GRW ENGINEERS, INC. HAS ATTEMPTED TO VERIFY THE ACCURACY AND/OR COMPLETENESS OF THIS INFORMATION BUT SHALL NOT BE RESPONSIBLE FOR ANY ERRORS OR OMISSIONS WHICH MAY BE INCORPORATED HEREIN AS A RESULT.

engineering | architecture | geospatial
 ENGINEER/ARCHITECT: GEORGE LEWIS
 CONSTRUCTION COMPANY: S.C.CASE EXCAVATING
 DATE: 12/2019



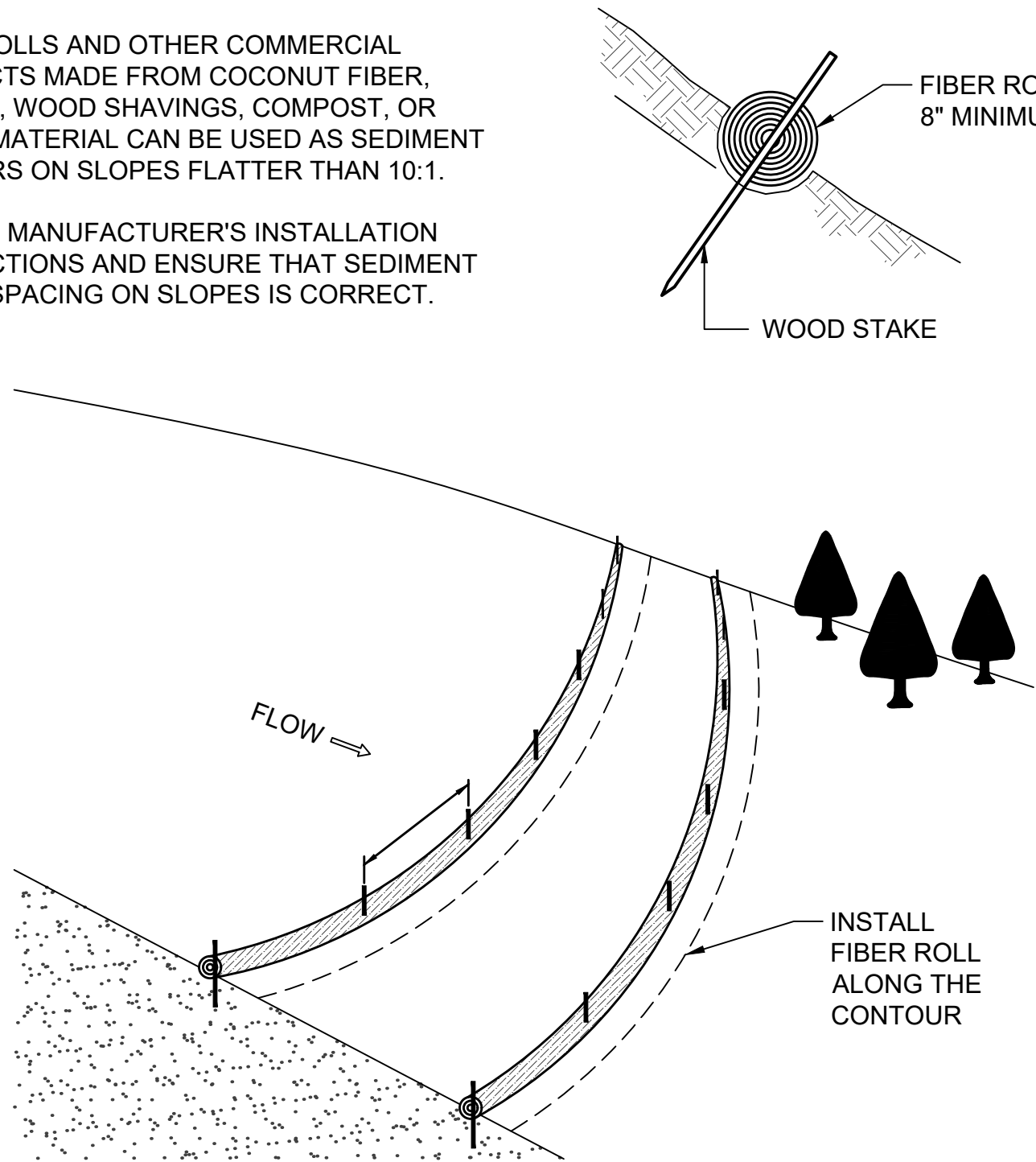
- NOTES:
- ALL EXISTING EXCAVATED MATERIAL THAT IS NOT TO BE REUSED IN THE WORK IS TO BE IMMEDIATELY REMOVED FROM THE SITE AND PROPERLY DISPOSED OF.
 - RESTORE STOCKPILE SITES TO PRE-EXISTING PROJECT CONDITION AND RESEED AS REQUIRED.
 - STOCKPILE HEIGHTS MUST NOT EXCEED 35'. STOCKPILE SLOPES MUST BE 2:1 OR FLATTER.

MATERIALS STOCKPILE
 NOT TO SCALE

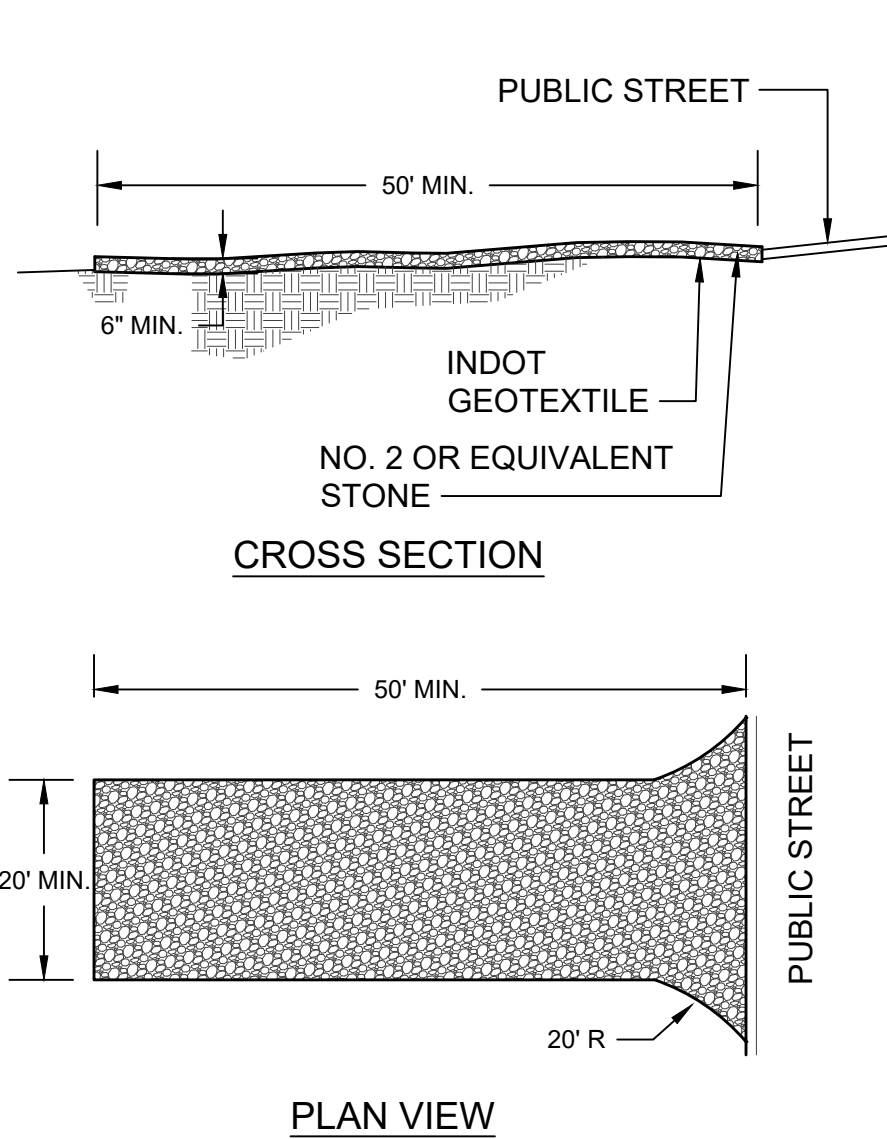


EROSION BLANKETS & TURF REINFORCEMENT MATS
 NOT TO SCALE

- NOTES:
- FIBER ROLLS AND OTHER COMMERCIAL PRODUCTS MADE FROM COCONUT FIBER, PLASTIC, WOOD SHAVINGS, COMPOST, OR OTHER MATERIAL CAN BE USED AS SEDIMENT BARRIERS ON SLOPES FLATTER THAN 10:1.
 - FOLLOW MANUFACTURER'S INSTALLATION INSTRUCTIONS AND ENSURE THAT SEDIMENT FILTER SPACING ON SLOPES IS CORRECT.

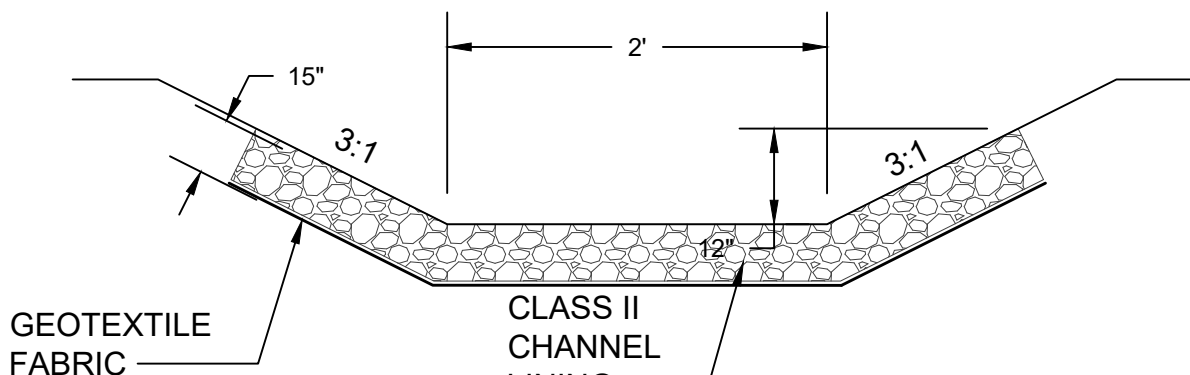


FIBER ROLLS
 NOT TO SCALE



- NOTES:
- A STABILIZED ENTRANCE PAD OF CRUSHED STONE SHALL BE LOCATED WHERE TRAFFIC WILL ENTER OR LEAVE THE CONSTRUCTION SITE ONTO A PUBLIC STREET.
 - GEOTEXTILE SHALL BE USED AS A BASE FOR THE CONSTRUCTION ENTRANCE.
 - THE ENTRANCE SHALL BE MAINTAINED IN A CONDITION WHICH WILL PREVENT TRACKING OR FLOWING OF SEDIMENT ONTO PUBLIC STREETS OR EXISTING PAVEMENT. THIS MAY REQUIRE PERIODIC TOP DRESSING WITH ADDITIONAL STONE AS CONDITIONS WARRANT AND REPAIR OR CLEAN OUT OF ANY MEASURES USED TO TRAP SEDIMENT.
 - ANY SEDIMENT SPILLED, DROPPED, WASHED, OR TRACKED ONTO PUBLIC STREETS OR INTO STORM DRAINS MUST BE REMOVED IMMEDIATELY.
 - WHEN APPROPRIATE, WHEELS MUST BE CLEANED TO REMOVE SEDIMENT PRIOR TO ENTERING A PUBLIC STREET. WHEN WASHING IS REQUIRED, IT SHALL BE DONE IN AN AREA STABILIZED WITH CRUSHED STONE WHICH DRAINS INTO AN APPROVED SEDIMENT BASIN.

STABILIZED CONSTRUCTION ENTRANCE
 NOT TO SCALE



RIPRAP CHANNEL LINING
 NOT TO SCALE

This document, originally issued, sealed, and signed by George W. Lewis, Indiana Professional Engineer, No. 10403303, on 7.2.2018, shall not be used in lieu of a certified document.

GRW PROJECT NO. 4635
 CLIENT PROJECT NO. -
 ALL RIGHTS RESERVED. THIS DOCUMENT IS THE PROPERTY OF GRW ENGINEERS, INC. IT SHALL NOT BE REPRODUCED IN WHOLE OR IN PART WITHOUT WRITTEN PERMISSION.

engineering | architecture | geospatial
 www.grwinc.com

EROSION CONTROL DETAILS
 US 36 FORCEMAIN REPLACEMENT
 TOWN OF PENDLETON, INDIANA

DESIGNED	DRAWN	REVIEWED	APPROVED
GWL	JRD	GWL	GWL

REVISIONS	DATE	DESCRIPTION
NO.		

DATE: JULY 2018
 SCALE: 1"=30'
 SHEET NO. C-13

THIS MARK SHOULD MEASURE EXACTLY 1" WHEN PLOTTED