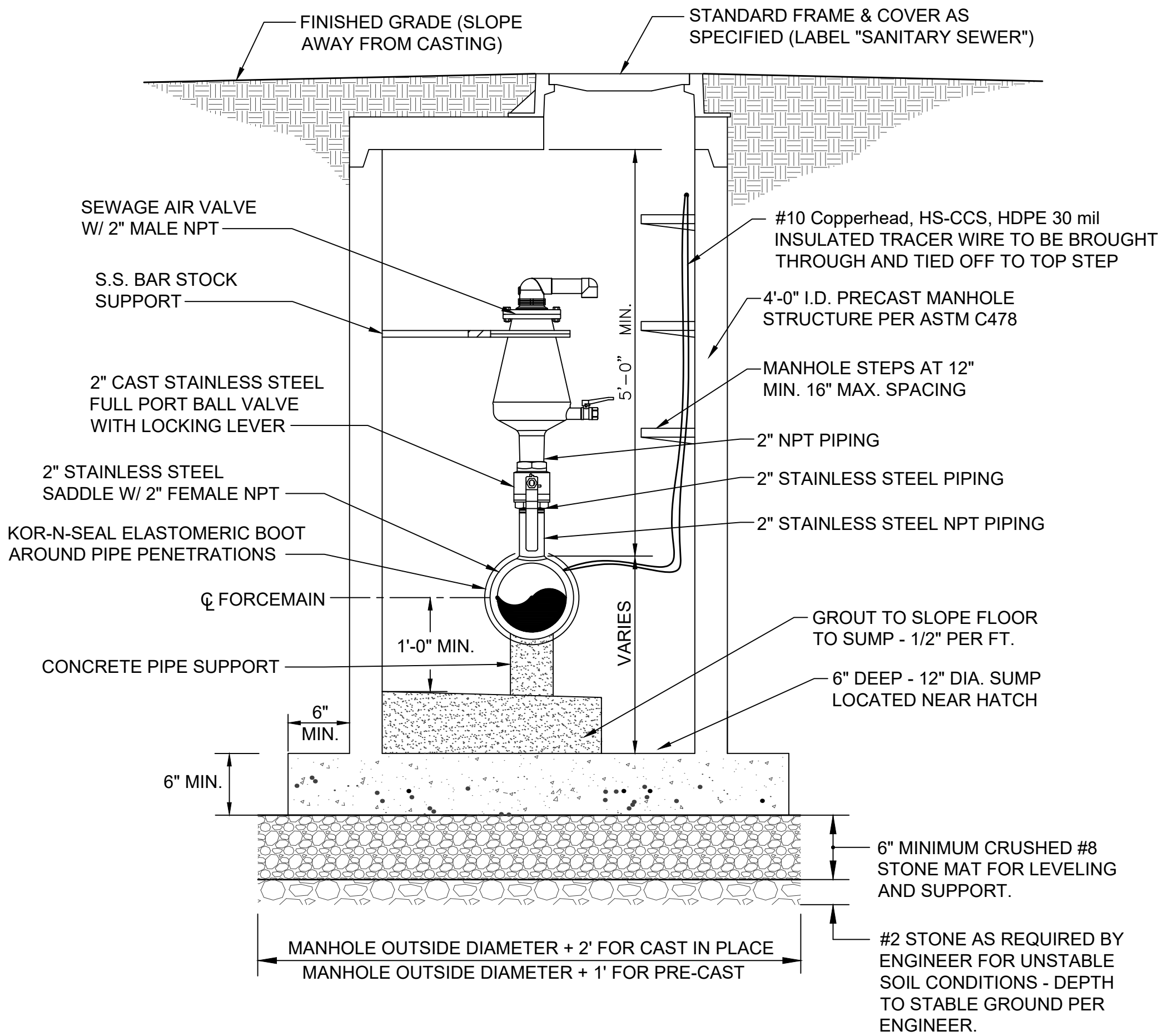


PLOTTED BY: Johnson

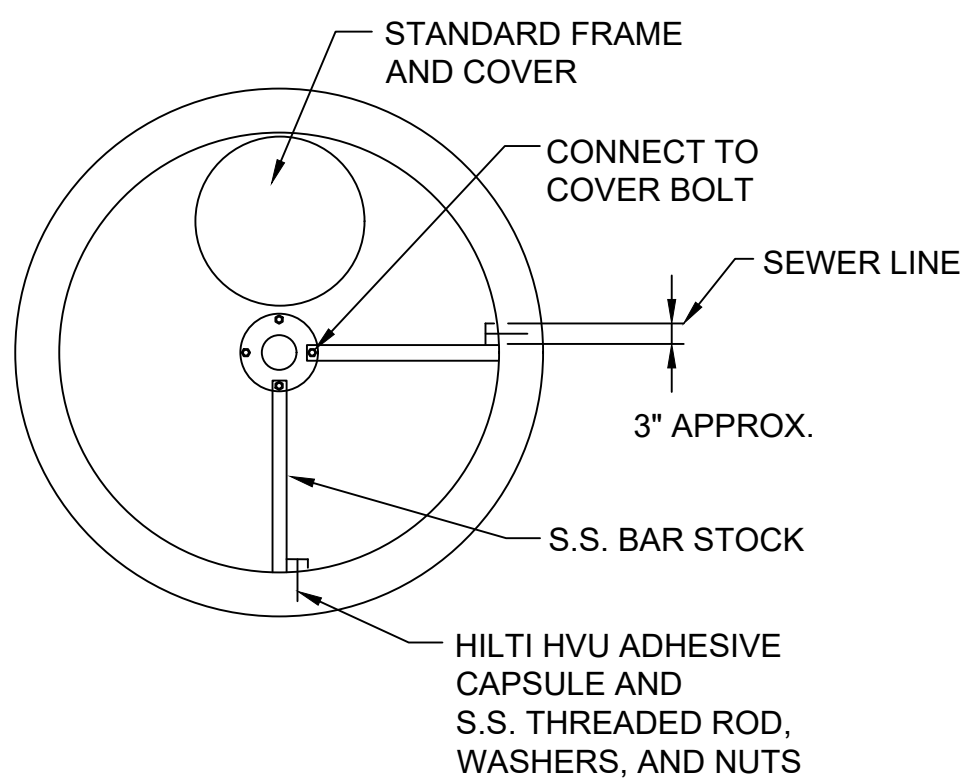
PRINTED: 12/19/2019 @ 4:48PM

FILE NAME: G:\4635-FCRWD-US 36\Working Drawings\AutoCAD\4635-C-10.dwg



CLOSED BOTTOM AIR RELEASE VALVE VAULT (PIPE 3" AND LARGER)

NOT TO SCALE

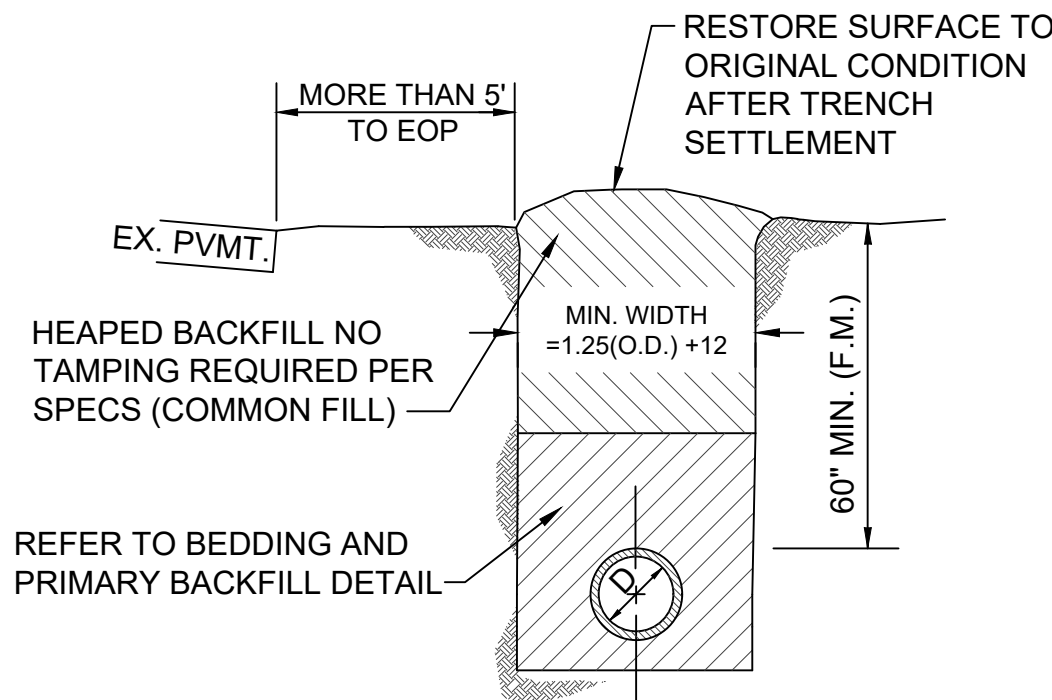


AIR RELEASE VALVE PLAN VIEW

NOT TO SCALE

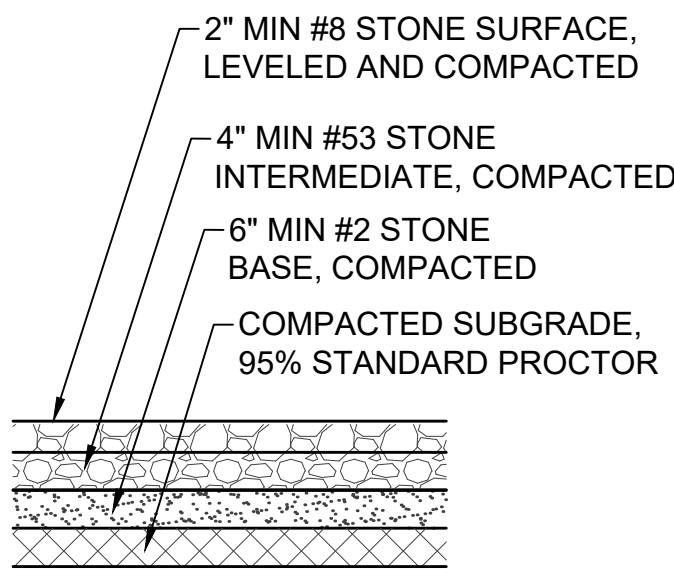
AIR RELEASE VALVE VAULT NOTES:

- AIR RELEASE VALVE VAULT SHALL BE LOCATED AT HIGH POINTS ALONG FORCEMAINS. EXACT LOCATION TO BE FIELD DETERMINED.
- CONTRACTOR SHALL PROVIDE ALL NECESSARY ADAPTER FITTINGS, SADDLES, ETC. IN ACCORDANCE WITH PIPE MANUFACTURER'S RECOMMENDATIONS TO CONNECT TO NPT FITTINGS. CONTRACTOR SHALL SUBMIT CONNECTION SHOP DRAWINGS FOR ENGINEER'S REVIEW & APPROVAL.
- CONTRACTOR IS RESPONSIBLE FOR DETERMINING VALVE VAULT OVERALL HEIGHT (MIN. 5'-0" FROM TOP OF FORCEMAIN) TO FACILITATE COMPLETE EQUIPMENT INSTALLATION.
- AIR RELEASE VALVE SHALL BE ANCHORED TO VAULT WALL WITH (2) 2"x1/2" S.S. PIECES OF BAR STOCK PERPENDICULAR TO EACH OTHER TO PREVENT MOVEMENT OF VALVE PARALLEL AND PERPENDICULAR TO FORCEMAIN. S.S. BAR STOCK SHALL BE CONNECTED TO AIR RELEASE VALVE WITH COVER BOLT AND TO THE MANHOLE WALL USING HILTI HVU ADHESIVE CAPSULE OR APPROVED EQUAL WITH ALL S.S. COMPONENTS INCLUDING THREADED ROD, WASHERS AND NUTS. MINIMUM EMBEDMENT INTO CONCRETE SHALL BE 4". CONTRACTOR MAY SUBMIT ALTERNATE VALVE STABILIZATION PLAN WITH SHOP DRAWINGS FOR ENGINEER'S REVIEW AND APPROVAL.



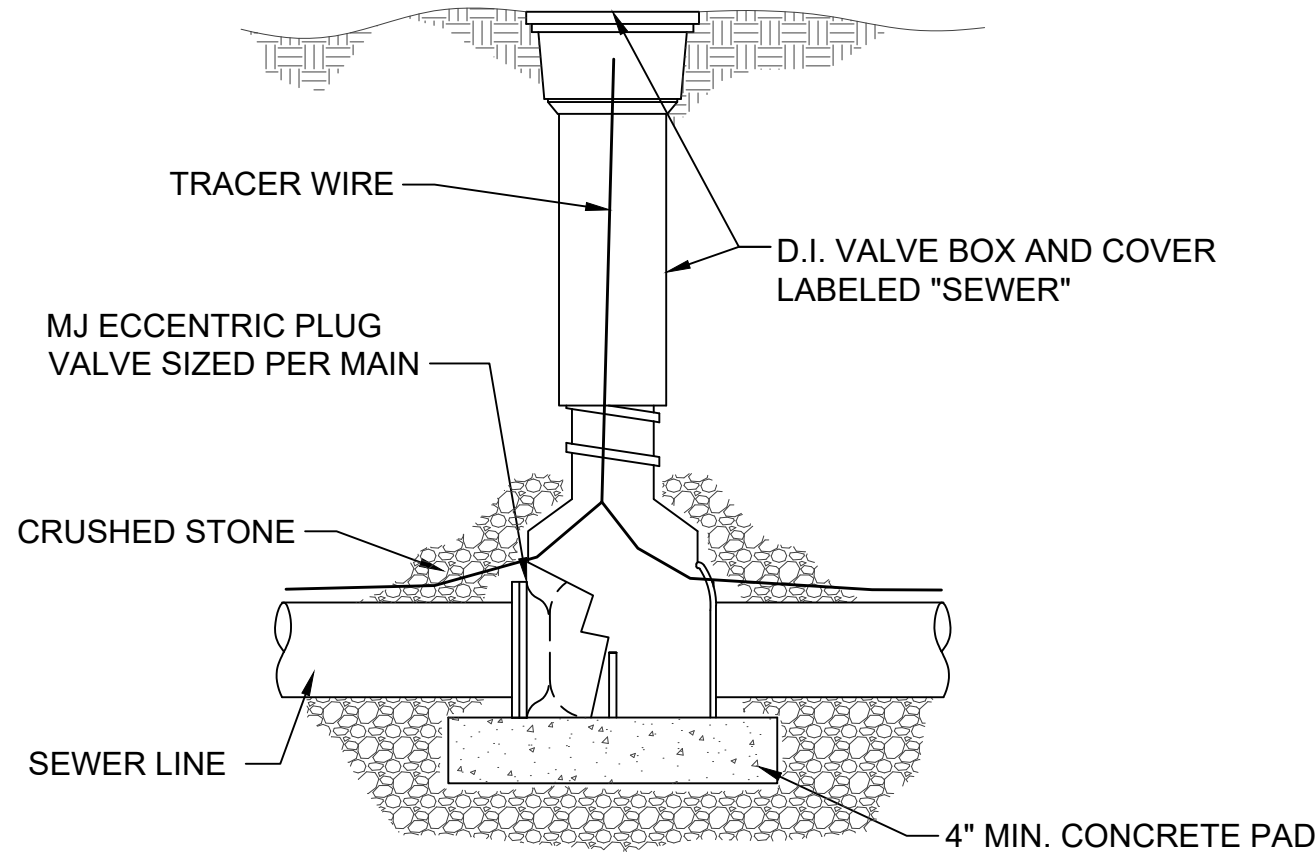
OPEN TERRAIN - METHOD "A"

NOT TO SCALE



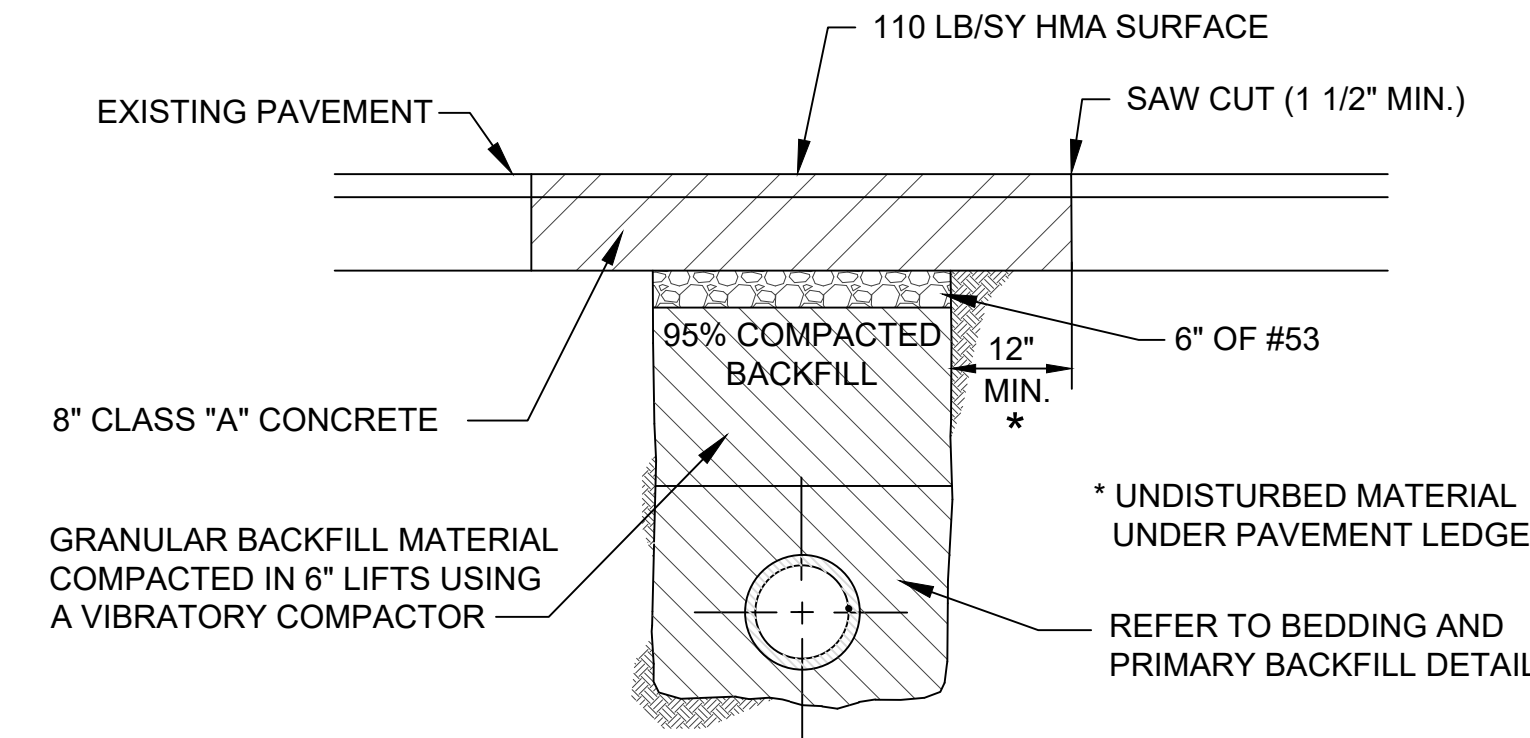
GRAVEL AREA DETAIL AROUND LIFT STATION

NOT TO SCALE



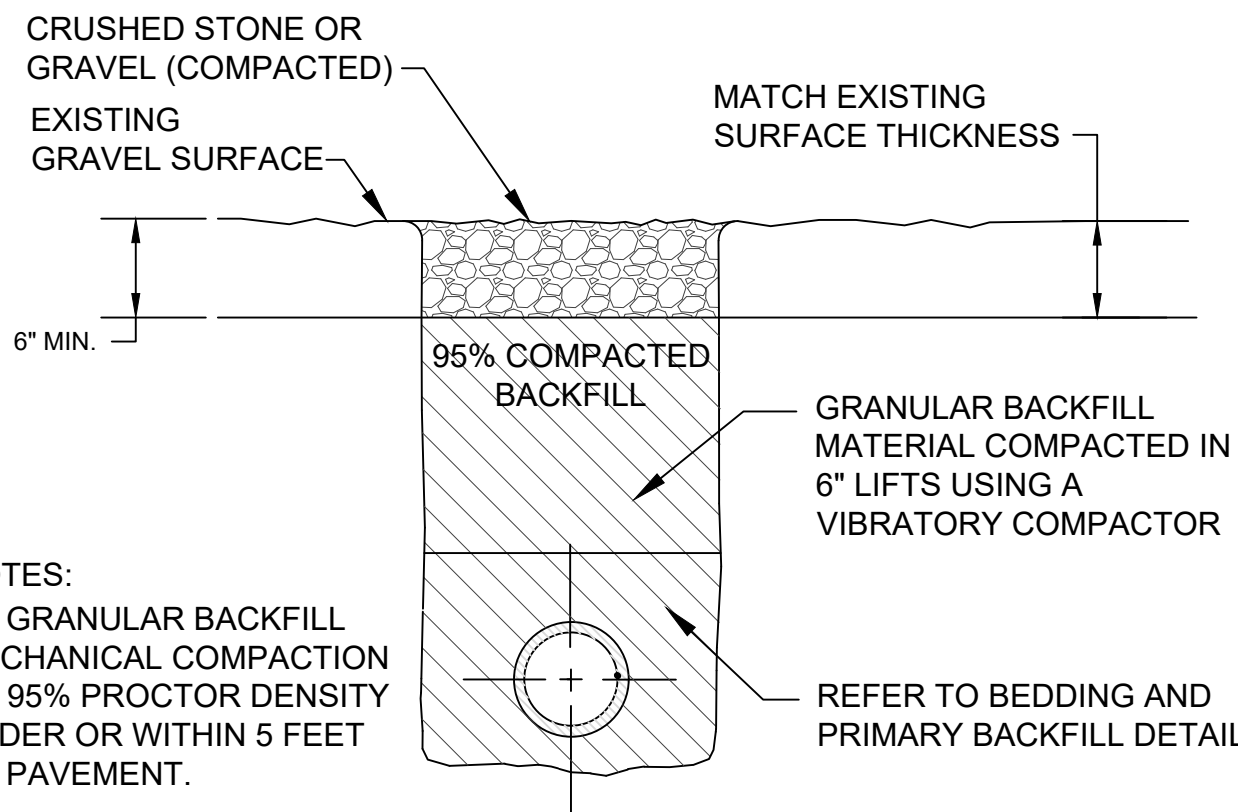
DETAIL BURIED PLUG VALVE

NOT TO SCALE



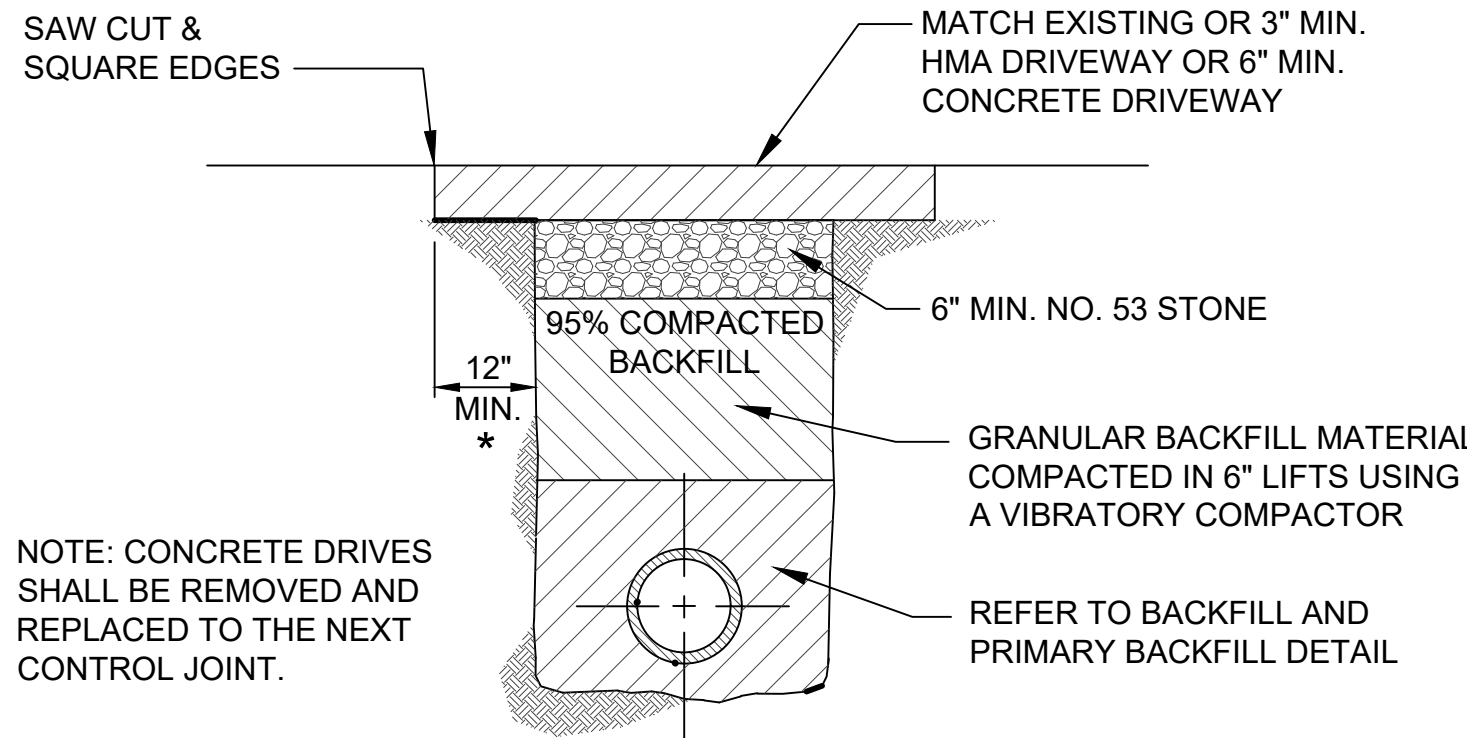
PRIMARY ROADWAY PATCHING - METHOD "C"

NOT TO SCALE



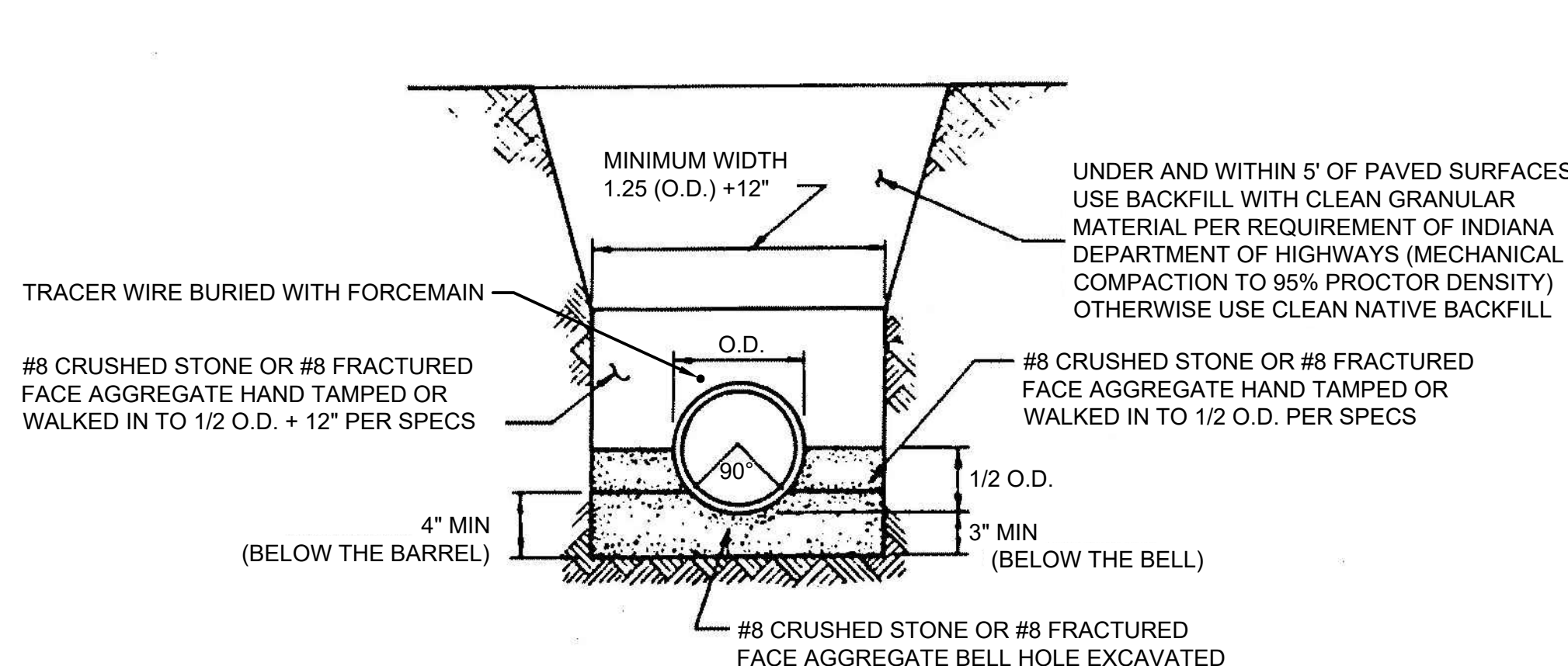
GRAVEL DRIVEWAYS - METHOD "B"

NOT TO SCALE



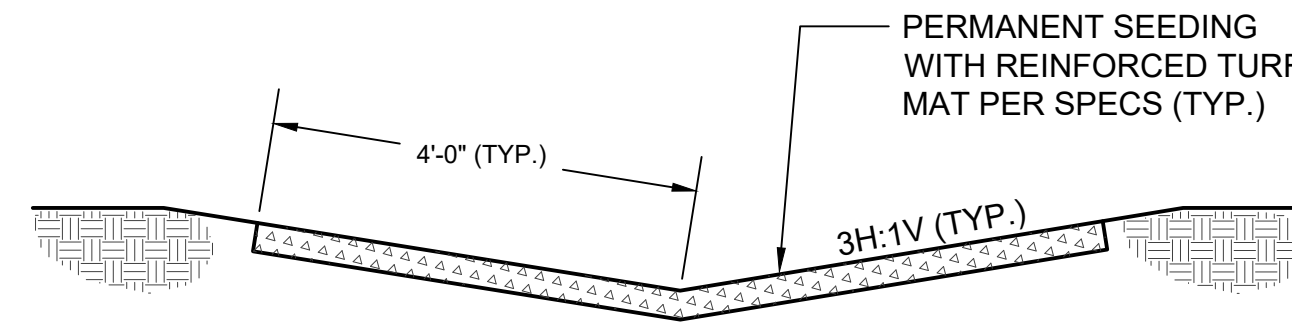
PAVED DRIVEWAY - METHOD "D1"

NOT TO SCALE



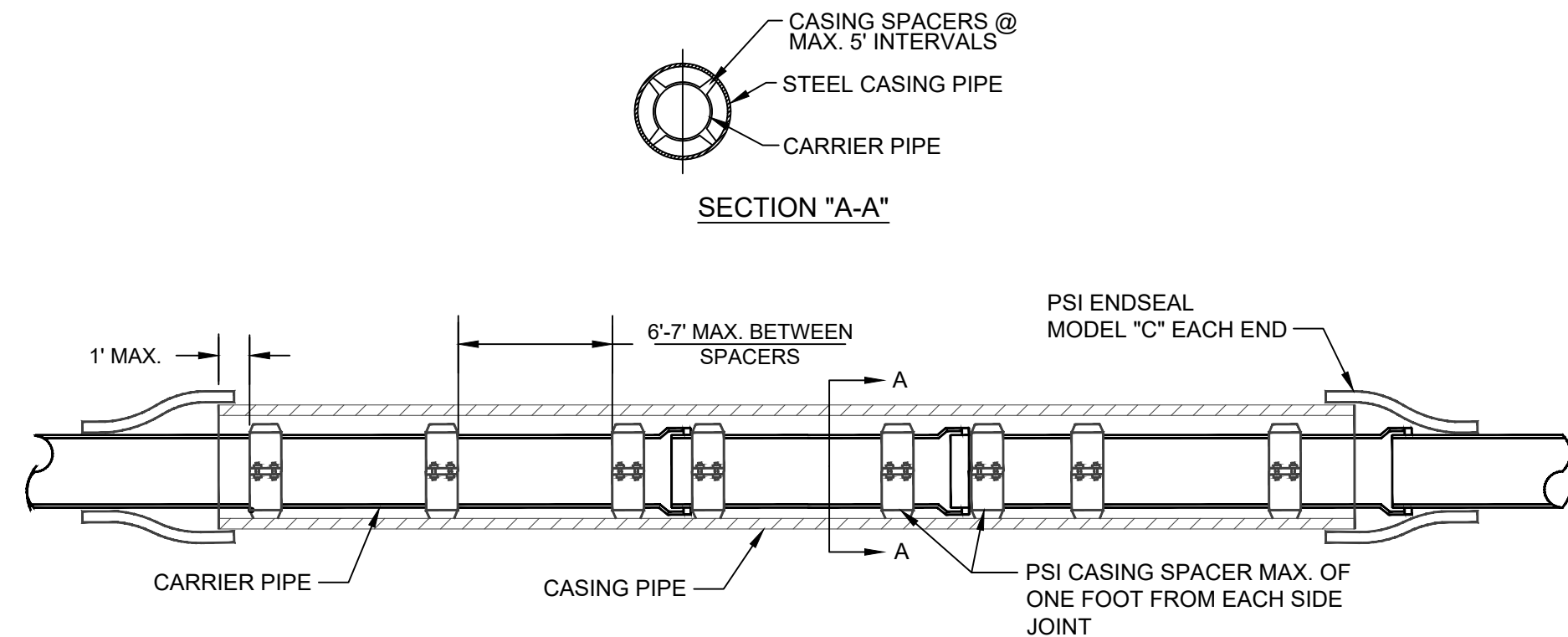
FLEXIBLE PIPE BEDDING AND PRIMARY BACKFILL DETAIL - PVC AND HDPE PIPE

NOT TO SCALE



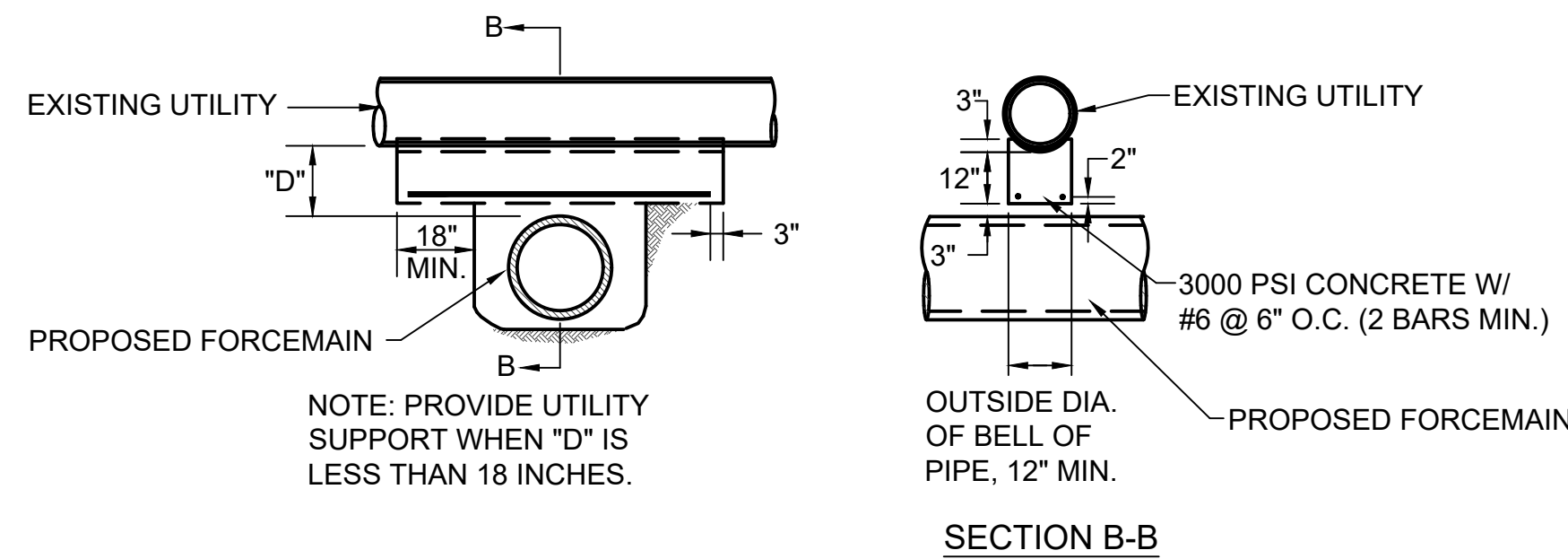
DETAIL - V-DITCH & SWALE

NOT TO SCALE



TYPICAL CASING-DETAIL

NOT TO SCALE



DETAIL - UTILITY CROSSING (BELOW)

NOT TO SCALE

This document, originally issued, sealed, and signed by George W. Lewis, Indiana Professional Engineer, No. 10403303, on 7.2.2018, shall not be used in lieu of a certified document.

GRW PROJECT NO. 4635
 CLIENT PROJECT NO. -
 ALL RIGHTS RESERVED. THIS DOCUMENT IS THE PROPERTY OF GRW ENGINEERS, INC. IT SHALL BE REPRODUCED IN WHOLE OR IN PART WITHOUT WRITTEN PERMISSION.

engineering | architecture | geospatial
 www.grwinc.com

STANDARD DETAILS
 US 36 FORCEMAIN REPLACEMENT TOWN OF PENDELETON, INDIANA

DESIGNED: GWL
 DRAWN: JRD
 REVIEWED: GWL
 APPROVED: GWL

REVISIONS
 NO. DESCRIPTION

DATE

JULY 2018

SCALE: 1"=30'

SHEET NO.

C-10