

- GENERAL NOTES**
1. ALL WYE, LATERAL AND PROFILE STATIONS ARE FROM THE NEAREST DOWNSTREAM MANHOLE (MH).
 2. WYES AND LATERALS TO BE 6" PIPE UNLESS OTHERWISE SPECIFIED.
 3. ALL WYE CONNECTIONS SHALL HAVE A MINIMUM OF FIVE FOOT LATERAL EXTENSION CONNECTED TO THE WYE, OR EXTEND TO THE UTILITY AND DRAINAGE EASEMENT OF THE LOT, WHICHEVER IS GREATER, BUT IN NO CASE SHOULD BE CLOSER THAN 7' TO THE PAD/BUILDING LINE. THE END OF THE LATERAL SHALL BE PLUGGED OR CAPPED, UNLESS OTHERWISE NOTED.
 4. LATERALS RUNNING TO THE OPPOSITE SIDE OF STREET SHALL EXTEND TO THE UTILITY AND DRAINAGE EASEMENT OF THE LOT, BUT IN NO CASE SHOULD BE CLOSER THAN 7' TO THE PAD/BUILDING LINE, UNLESS OTHERWISE NOTED.
 5. IT SHALL BE THE CONTRACTOR'S RESPONSIBILITY TO FIELD VERIFY ALL UTILITY LOCATIONS BEFORE CONSTRUCTION BEGINS.
 6. TEMPORARY TRAFFIC CONTROL DURING CONSTRUCTION TO CONFORM TO APPLICABLE LOCAL AND STATE STANDARDS.
 7. ALL CONSTRUCTION ACTIVITY ON THIS SITE TO BE PERFORMED IN COMPLIANCE WITH APPLICABLE O.S.H.A. STANDARDS FOR WORKER SAFETY.
 8. CONTRACTOR SHALL MINIMIZE DAMAGE TO EXISTING TREES.
 9. THE LOWEST FLOOR ELEVATION OF A HOME TO HAVE A GRAVITY SANITARY SEWER CONNECTION MUST BE A MINIMUM OF ONE (1) FOOT ABOVE THE TOP OF CASTING ELEVATION OF EITHER THE FIRST UPSTREAM OR DOWNSTREAM MANHOLE ON THE PUBLIC SEWER TO WHICH THE CONNECTION IS TO BE MADE, OR A GRINDER PUMP SHALL BE REQUIRED.
 10. DUCTILE IRON (D.I.) PIPE SHALL BE INSTALLED WHERE NOTED ON PROFILES. REFER TO SHEET C901 FOR SPECIFICATIONS.
 11. THE FINISHED FLOOR OF THE HOME IS SIXTEEN (16) INCHES HIGHER THAN THE NOTED PAD ELEVATION.

BENCHMARK

G236
USC&GS Bronze disk set vertically in West face of NW corner old "Center School" building @ SE corner S.R. 13 & C.R. 800 South stamped "G236 1947".
ELEV. = 864.58 (NAVD 29)

TM #104
R.R. Spike in North face of power pole #199-776 @ NW corner site, south side of C.R. 800 South.
ELEV. = 849.09 (NAVD 29)

TM #2
3/4" Iron pin in concrete at the center line of S.R. 13 and C.R. 800 South, flush with the pavement.
ELEV. = 863.34 (NAVD 29)

TM #110
PK Nail east side tree on southeast corner farm property +/- 800' south of C.R. 800 South.
Approx. Coord. N=9200, E=7500.
ELEV. = 858.57

HOLEY MOLEY SAYS
"DON'T DIG BLIND"



"IT'S THE LAW"
CALL 2 WORKING DAYS BEFORE YOU DIG
1-800-382-5544
CALL TOLL FREE
PER INDIANA STATE LAW IS-69-1891.
IT IS AGAINST THE LAW TO EXCAVATE WITHOUT NOTIFYING THE UNDERGROUND LOCATION SERVICE TWO (2) WORKING DAYS BEFORE COMMENCING WORK.

REVISIONS:
1. 11/20/04 - UPDATED PER RECORD DRAWING INFORMATION
2. 12/17/04 - REVISED PER RECORD DRAWING INFORMATION

DATE:
THIS DRAWING AND THE IDEAS, DESIGNS AND CONCEPTS CONTAINED HEREIN ARE THE EXCLUSIVE INTELLECTUAL PROPERTY OF THE SCHNEIDER CORPORATION, AND ARE NOT TO BE USED OR REPRODUCED, IN WHOLE OR IN PART, WITHOUT THE WRITTEN CONSENT OF THE SCHNEIDER CORPORATION.
(C) COPYRIGHTED BY THE SCHNEIDER CORP. (2003)



THE SCHNEIDER CORPORATION
Historic Fort Harrison
8901 Otis Avenue
Indianapolis, IN 46216-1037
Telephone: 317.826.7100
Fax: 317.826.7300
www.schneidercorp.com

Architecture
Civil Engineering
Environmental Engineering
Geotechnical Services
GIS * LIS
Home Builder Services
Interior Design
Land Surveying
Landscape Architecture
Transportation Engineering

SUMMERLAKE AT SUMMERBROOK

PHASE II, SECTION 7
SEC. 28-TURN-R6E, MADISON COUNTY, INDIANA

C. P. MORGAN COMMUNITIES, L.P.
4670 HAVEN POINT BLVD., INDIANAPOLIS, IN 46280

DATE: 1/7/04 PROJECT NO.: 3758.007
DRAWN BY: DMW CHECKED BY:

SHEET TITLE:
SANITARY SEWER
PLAN & PROFILES

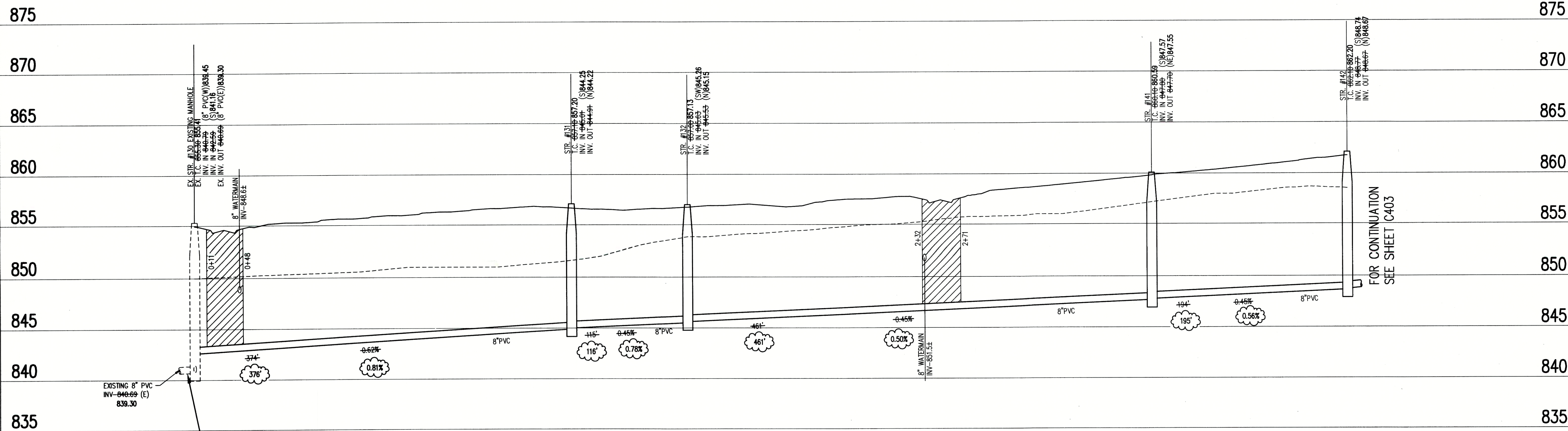
DRAWING FILES:
R:\3K\3758\007\DWG\C401-3
XREF-R:\3K\3758\007\DWG\3758
XREF-R:\3K\3758\007\DWG\SANITARY
XREF-R:\3K\3758\006\DWG\685
XREF-R:\3K\3758\008\DWG\885

SHEET NO.:

C402

SANITARY SEWER PLAN

SCALE: 1"=50'



CONTRACTOR MUST FIELD VERIFY EXISTING INVERTS PRIOR TO CONSTRUCTION. IF A VARIATION EXISTS, THEN CONTACT THE ENGINEER IMMEDIATELY.

SANITARY SEWER
RECORD DRAWING

LEGEND		
Existing Grade	New Grade	Granular Backfill

SCALE: HORZ.: 1"=50'
VERT.: 1"=5'

SANITARY SEWER PROFILE