

THERE ARE NO DRINKING WATER WELLS WITHIN 100' RADIUS OF ANY GRAVITY SANITARY SEWER LINES OR MANHOLES ON THIS PROJECT.

NOTE
THE TOPOGRAPHIC SURVEY FOR THE SUBJECT SITE WAS PROVIDED BY OTHERS AND NOT PREPARED BY THE SCHNEIDER CORPORATION.
ANY PORTION OF THESE PLANS BASED ON INFORMATION FROM SAID SURVEY IS, THEREFORE EXPRESSLY EXCLUDED FROM THE WITHIN CERTIFICATION.

Sheet	Detail Number	Description
C802	1	Precast Reinforced Concrete Manhole
C802	3	Sanitary Sewer Bedding Detail
C802	4	Service Connection for Shallow Sewer

HOLEY MOLEY SAYS
"DON'T DIG BLIND"

"IT'S THE LAW"
CALL 3 WORKING DAYS BEFORE YOU DIG
1-800-382-5544
CALL TOLL FREE
FOR INDIANA STATE LAW 5-69-1091,
IT IS AGAINST THE LAW TO EXCAVATE
WITHOUT NOTIFYING THE UNDERGROUND
LOCATION SERVICE TWO (2) WORKING
DAYS BEFORE COMMENCING WORK.

- GENERAL NOTES**
1. ALL WYE, LATERAL AND PROFILE STATIONS ARE FROM THE NEAREST DOWNSTREAM MANHOLE. (MH)
 2. WYES AND LATERALS TO BE 6" PIPE UNLESS OTHERWISE SPECIFIED.
 3. ALL WYE CONNECTIONS SHALL HAVE A MINIMUM OF FIVE FOOT LATERAL EXTENSION CONNECTED TO THE WYE, OR EXTEND TO THE UTILITY AND DRAINAGE EASEMENT OF THE LOT, WHICHEVER IS GREATER, BUT IN NO CASE SHOULD BE CLOSER THAN 7' TO THE PAD/BUILDING LINE. THE END OF THE LATERAL SHALL BE PLUGGED OR CAPPED, UNLESS OTHERWISE NOTED.
 4. LATERALS RUNNING TO THE OPPOSITE SIDE OF STREET SHALL EXTEND TO THE UTILITY AND DRAINAGE EASEMENT OF THE LOT, BUT IN NO CASE SHOULD BE CLOSER THAN 7' TO THE PAD/BUILDING LINE, UNLESS OTHERWISE NOTED.
 5. IT SHALL BE THE CONTRACTORS RESPONSIBILITY TO FIELD VERIFY ALL UTILITY LOCATIONS BEFORE CONSTRUCTION BEGINS.
 6. TEMPORARY TRAFFIC CONTROL DURING CONSTRUCTION TO CONFORM TO APPLICABLE LOCAL AND STATE STANDARDS.
 7. ALL CONSTRUCTION ACTIVITY ON THIS SITE TO BE PERFORMED IN COMPLIANCE WITH APPLICABLE O.S.H.A. STANDARDS FOR WORKER SAFETY.
 8. CONTRACTOR SHALL MINIMIZE DAMAGE TO EXISTING TREES.
 9. THE LOWEST FLOOR ELEVATION OF A HOME TO HAVE A GRANTY SANITARY SEWER CONNECTION MUST BE A MINIMUM OF ONE (1) FOOT ABOVE THE TOP OF CASTING ELEVATION OF EITHER THE FIRST UPSTREAM OR DOWNSTREAM MANHOLE ON THE PUBLIC SEWER TO WHICH THE CONNECTION IS TO BE MADE, OR A GRINDER PUMP SHALL BE REQUIRED.
 10. DUCTILE IRON (D.I.) PIPE SHALL BE INSTALLED WHERE NOTED ON PROFILES. REFER TO SHEET C901 FOR SPECIFICATIONS.
 11. THE FINISHED FLOOR OF THE HOME IS SIXTEEN (16) INCHES HIGHER THAN THE NOTED PAD ELEVATION.

BENCHMARK

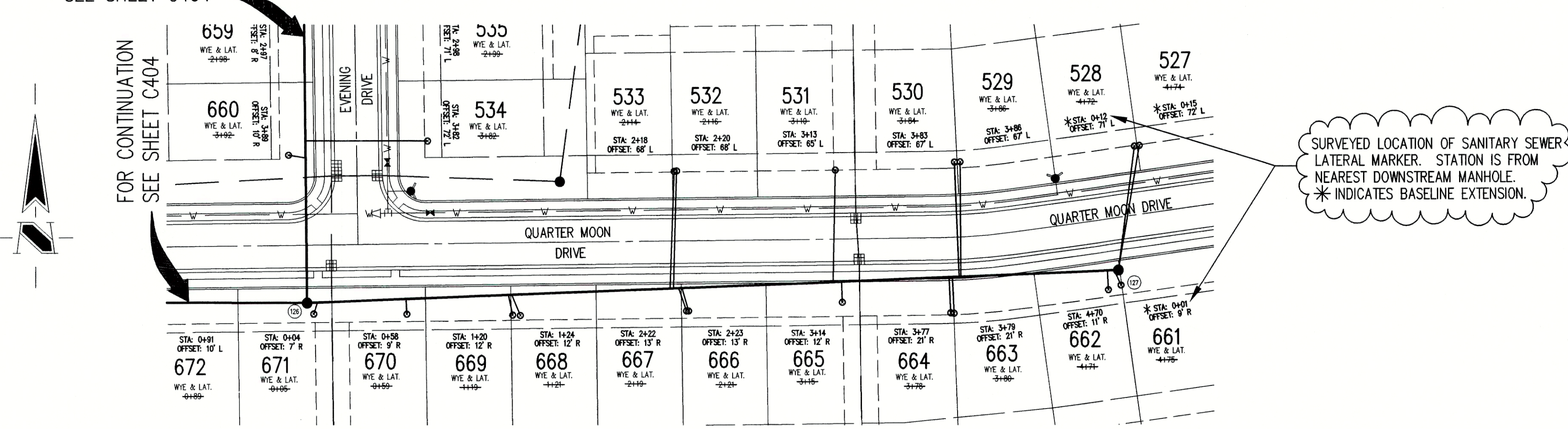
G236
USC&GS Bronze disk set vertically in West face of NW corner old "Center School" building @ SE corner S.R. 13 & C.R. 800 South stamped "G236 1947".
ELEV. = 864.58 (NAVD 29)

TBM #104
R.R. Spike in North face of power pole #199-776 @ NW corner site, south side of C.R. 800 South.
ELEV. = 849.09 (NAVD 29)

TBM #2
3/4" iron pin in concrete at the center line of S.R. 13 and C.R. 800 South, flush with the pavement.
ELEV. = 863.34 (NAVD 29)

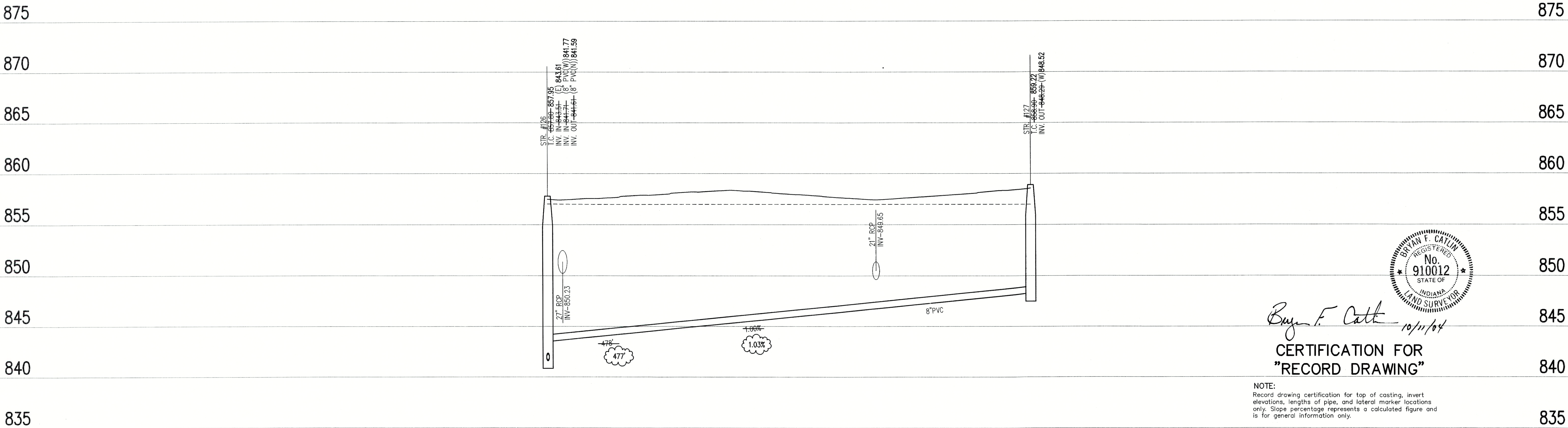
TBM #110
P.k. Nail east side tree on southeast corner farm property +/- 800' south of C.R. 800 South.
Approx. Coord N=9200, E=7300.
ELEV. = 858.57

FOR CONTINUATION
SEE SHEET C404



SANITARY SEWER PLAN

SCALE: 1"=50'



Buy F. Cath 10/11/04
**CERTIFICATION FOR
"RECORD DRAWING"**

NOTE:
Record drawing certification for top of casting, invert elevations, lengths of pipe, and lateral marker locations only. Slope percentage represents a calculated figure and is for general information only.

**SANITARY SEWER
RECORD DRAWING**

LEGEND		
Existing Grade	New Grade	Granular Backfill

SCALE: HORZ.: 1"=50'
VERT.: 1"=5'

SANITARY SEWER PROFILE

REVISIONS:
1. DATE: 10/11/04-UPDATED PER RECORD DRAWING INFORMATION.

DATE:
THIS DRAWING AND THE IDEAS, DESIGNS AND CONCEPTS CONTAINED HEREIN ARE THE EXCLUSIVE INTELLECTUAL PROPERTY OF THE SCHNEIDER CORPORATION, AND ARE NOT TO BE USED OR REPRODUCED, IN WHOLE OR IN PART, WITHOUT THE WRITTEN CONSENT OF THE SCHNEIDER CORPORATION.
© COPYRIGHTED BY THE SCHNEIDER CORP. (2003)

Schneider
THE SCHNEIDER CORPORATION
Historic Fort Harrison
8901 Otis Avenue
Indianapolis, IN 46216-1037
Telephone: 317.826.7100
Fax: 317.826.7300
www.schneidercorp.com

Architecture
Civil Engineering
Environmental Engineering
Geotechnical Services
GIS * LIS
Home Builder Services
Interior Design
Land Surveying
Landscape Architecture
Transportation Engineering

SUMMERLAKE AT SUMMERBROOK
PHASE II, SECTION 6
SEC. 28-T18N-R6E, MADISON COUNTY, INDIANA

C. P. MORGAN COMMUNITIES, L.P.
4670 HAVEN POINT BLVD., INDIANAPOLIS, IN. 46280

DATE: 10/2/03 PROJECT NO: 3758.006
DRAWN BY: DTR CHECKED BY:
SHEET TITLE: SANITARY SEWER PLAN & PROFILES
DRAWING FILES:
R:\3\3758\006\DWGS\C401-5
XREF-R:\3\3758\006\DWGS\BBS
XREF-R:\3\3758\006\DWGS\SANITARY
XREF-R:\3\3758\001\DWGS\1B5
XREF-R:\3\3758\004\DWGS\4B5
XREF-R:\3\3758\007\DWGS\7B5
XREF-R:\3\3758\001\DWGS\SURVEY\TOPD
SHEET NO: **C405**