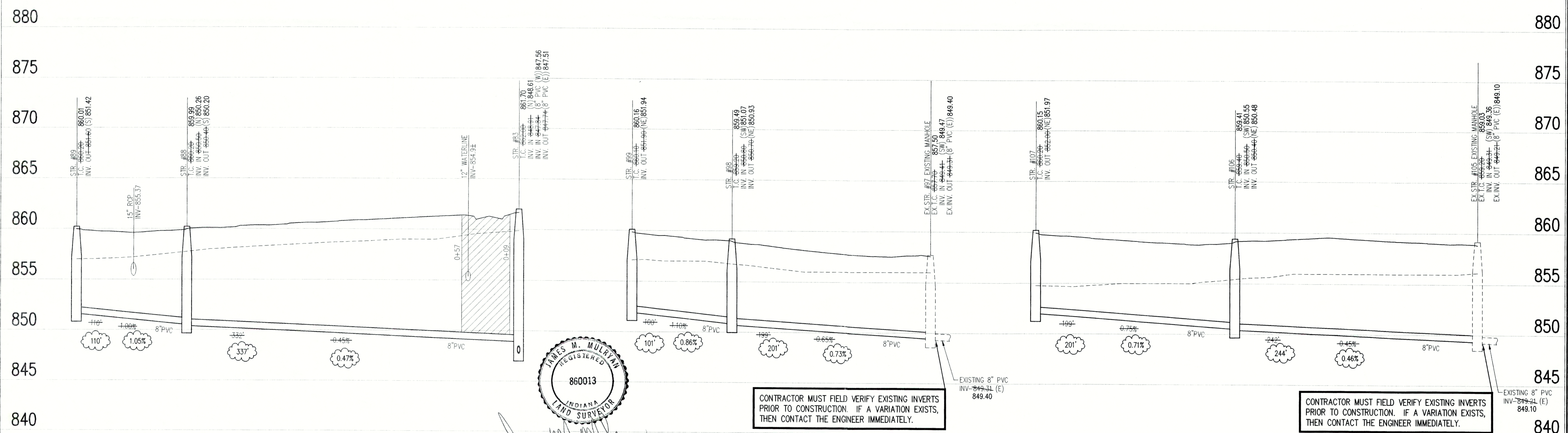


# SANITARY SEWER PLAN

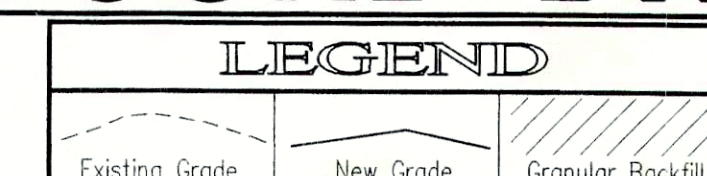
SCALE: 1"=50'



CERTIFICATION FOR  
"RECORD DRAWING"

**NOTE:**  
Record drawing certification for top of casting, invert elevations, lengths of pipe, and lateral marker locations only. Slope percentage represents a calculated figure and is for general information only.

# SANITARY SEWER RECORD DRAWING



SCALE:  $\frac{\text{HORIZ.: } 1''=50'}{\text{VERT.: } 1''=5'}$

# SANITARY SEWER PROFILE

REVISIONS:  
1. DTR 12/76/AD, UPDATED PER RECORD DRAWING INFORMATION

DATE: \_\_\_\_\_

THIS DRAWING AND THE IDEAS, DESIGNS AND CONCEPTS CONTAINED HEREIN ARE THE EXCLUSIVE INTELLECTUAL PROPERTY OF THE SCHNEIDER CORPORATION, AND ARE NOT TO BE USED OR REPRODUCED IN WHOLE OR IN PART, WITHOUT THE WRITTEN CONSENT OF THE SCHNEIDER CORPORATION.

© COPYRIGHTED BY THE SCHNEIDER CORP. (2003)



**THE SCHNEIDER CORPORATION**  
Historic Fort Harrison  
8901 Otis Avenue  
Indianapolis, IN 46216-1037  
Telephone: 317.826.7100  
Fax: 317.826.7300  
[www.schneidercorp.com](http://www.schneidercorp.com)

- Architecture
- Civil Engineering
- Environmental Engineering
- Geotechnical Services
- GIS \* LIS
- Home Builder Services
- Interior Design
- Land Surveying
- Landscape Architecture
- Transportation Engineering

# SUMMERLAKE AT SUMMERBROOK

PHASE II, SECTION 5  
SEC. 28-T18N-R6E., MADISON COUNTY, INDIANA

C. P. MORGAN COMMUNITIES, L.P.  
1670 HAVEN POINT BLVD., INDIANAPOLIS, IN. 46280

DATE: 5/1/03	PROJECT NO.: 3758.005
DRAWN BY: DTR	CHECKED BY:
SHEET TITLE:  SANITARY SEWER PLAN & PROFILES	
DRAWING FILES: R:\3\3758\005\DWGS\C401-3 XREF-R:\3\3758\005\DWGS\SBS XREF-R:\3\3758\005\DWGS\SANITARY XREF-R:\3\3758\004\DWGS\4BS XREF-R:\3\3758\006\DWGS\GBS	

SHEET NO.: C403