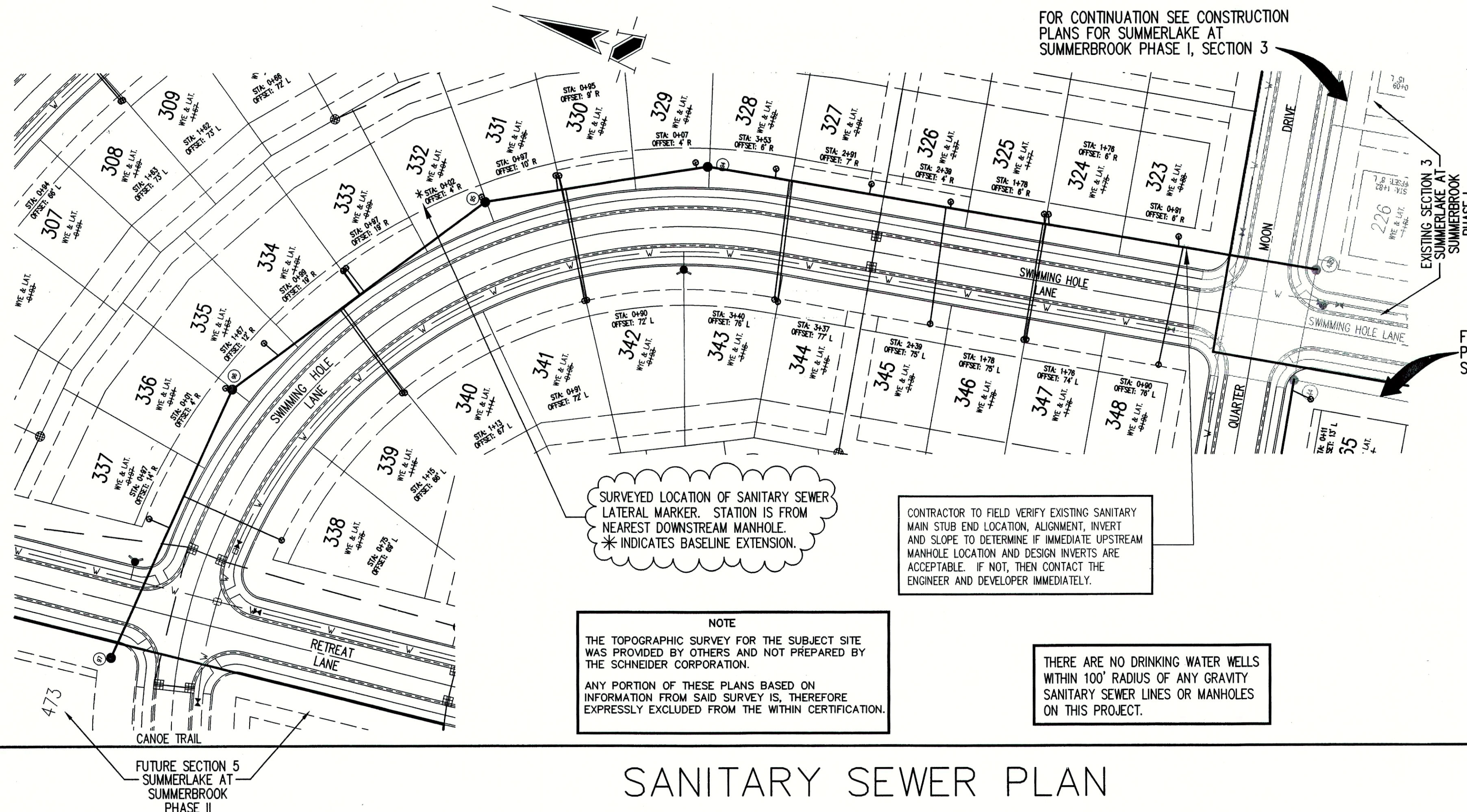


HOLEY MOLEY SAYS  
"DON'T  
DIG  
BLIND"  
"IT'S THE LAW"  
CALL 2 WORKING DAYS BEFORE YOU DIG  
1-800-382-5544  
CALL TOLL FREE  
PER INDIANA STATE LAW (S-69-1991,  
IT IS AGAINST THE LAW TO EXCAVATE  
WITHOUT NOTIFYING THE UNDERGROUND  
LOCATION SERVICE TWO (2) WORKING  
DAYS BEFORE COMMENCING WORK.



NOTE  
THE TOPOGRAPHIC SURVEY FOR THE SUBJECT SITE  
WAS PROVIDED BY OTHERS AND NOT PREPARED BY  
THE SCHNEIDER CORPORATION.  
ANY PORTION OF THESE PLANS BASED ON  
INFORMATION FROM SAID SURVEY IS, THEREFORE  
EXPRESSLY EXCLUDED FROM THE WITHIN CERTIFICATION.

CONTRACTOR TO FIELD VERIFY EXISTING SANITARY  
MAIN STUB END LOCATION, ALIGNMENT, INVERT  
AND SLOPE TO DETERMINE IF IMMEDIATE UPSTREAM  
MANHOLE LOCATION AND DESIGN INVERTS ARE  
ACCEPTABLE. IF NOT, THEN CONTACT THE  
ENGINEER AND DEVELOPER IMMEDIATELY.

THERE ARE NO DRINKING WATER WELLS  
WITHIN 100' RADIUS OF ANY GRAVITY  
SANITARY SEWER LINES OR MANHOLES  
ON THIS PROJECT.

FOR CONTINUATION SEE CONSTRUCTION  
PLANS FOR SUMMERLAKE AT  
SUMMERBROOK PHASE I, SECTION 3

FOR CONTINUATION SEE CONSTRUCTION  
PLANS FOR SUMMERLAKE AT  
SUMMERBROOK PHASE I, SECTION 3

### GENERAL NOTES

1. ALL WYE, LATERAL AND PROFILE STATIONS ARE FROM THE NEAREST DOWNSTREAM MANHOLE (MH).
2. WYES AND LATERALS TO BE 6" PIPE UNLESS OTHERWISE SPECIFIED.
3. ALL WYE CONNECTIONS SHALL HAVE A MINIMUM OF FIVE FOOT LATERAL EXTENSION CONNECTED TO THE WYE, OR EXTEND TO THE UTILITY AND DRAINAGE EASEMENT OF THE LOT, WHICHEVER IS GREATER, BUT IN NO CASE SHOULD BE CLOSER THAN 7' TO THE PAD/BUILDING LINE. THE END OF THE LATERAL SHALL BE PLUGGED OR CAPPED, UNLESS OTHERWISE NOTED.
4. LATERALS RUNNING TO THE OPPOSITE SIDE OF STREET SHALL EXTEND TO THE UTILITY AND DRAINAGE EASEMENT OF THE LOT, BUT IN NO CASE SHOULD BE CLOSER THAN 7' TO THE PAD/BUILDING LINE, UNLESS OTHERWISE NOTED.
5. IT SHALL BE THE CONTRACTORS RESPONSIBILITY TO FIELD VERIFY ALL UTILITY LOCATIONS BEFORE CONSTRUCTION BEGINS.
6. TEMPORARY TRAFFIC CONTROL DURING CONSTRUCTION TO CONFORM TO APPLICABLE LOCAL AND STATE STANDARDS.
7. ALL CONSTRUCTION ACTIVITY ON THIS SITE TO BE PERFORMED IN COMPLIANCE WITH APPLICABLE O.S.H.A. STANDARDS FOR WORKER SAFETY.
8. CONTRACTOR SHALL MINIMIZE DAMAGE TO EXISTING TREES.
9. THE LOWEST FLOOR ELEVATION OF A HOME TO HAVE A GRAVITY SANITARY SEWER CONNECTION MUST BE A MINIMUM OF ONE (1) FOOT ABOVE THE TOP OF CASTING ELEVATION OF EITHER THE FIRST UPSTREAM OR DOWNSTREAM MANHOLE ON THE PUBLIC SEWER TO WHICH THE CONNECTION IS TO BE MADE, OR A GRINDER PUMP SHALL BE REQUIRED.
10. DUCTILE IRON (D.I.) PIPE SHALL BE INSTALLED WHERE NOTED ON PROFILES. REFER TO SHEET C601 FOR SPECIFICATIONS.
11. THE FINISHED FLOOR OF THE HOME IS SIXTEEN (16) INCHES HIGHER THAN THE NOTED PAD ELEVATION.

### BENCHMARK

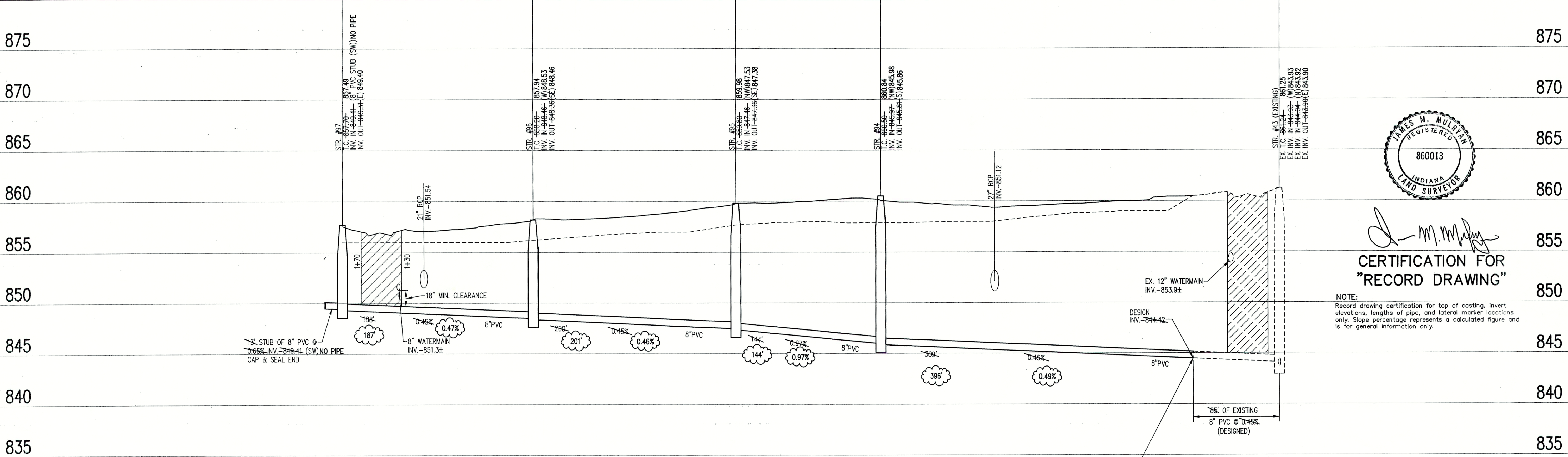
G236  
US2665 Bronze disk set vertically in West face of  
NW corner old "Center School" building @ SE corner  
S.R. 13 & C.R. 800 South stamped "G236 1947".  
ELEV. - 864.58 (NAVD 29)  
TBM #104  
R.R. Spike in North face of power pole #199-776 @  
NW corner site south side of C.R. 800 South.  
ELEV. - 849.09 (NAVD 29)  
TBM #2  
3/4" Iron pin in concrete at the center line of  
S.R. 13 and C.R. 800 South, flush with the pavement.  
ELEV. - 863.34 (NAVD 29)  
TBM #10  
PK Nail east side tree on southeast corner farm  
property +/- 800' south of C.R. 800 South.  
Approx. Coord. N-9200, E-7300.  
ELEV. - 858.57

Sheet	Detail	Description
C802	1	Precast Reinforced Concrete Manhole
C802	3	Sanitary Sewer Bedding Detail
C802	4	Service Connection for Shallow Sewer
C802	5	Service Connection for Deep Sewer

LEGEND/DETAILS

SCALE: 1"=50'

## SANITARY SEWER PLAN



CONTRACTOR TO FIELD VERIFY EXISTING SANITARY  
MAIN STUB END LOCATION, ALIGNMENT, INVERT  
AND SLOPE TO DETERMINE IF IMMEDIATE UPSTREAM  
MANHOLE LOCATION AND DESIGN INVERTS ARE  
ACCEPTABLE. IF NOT, THEN CONTACT THE  
ENGINEER AND DEVELOPER IMMEDIATELY.

## SANITARY SEWER RECORD DRAWING

Existing Grade	New Grade	Granular Backfill
----------------	-----------	-------------------

SCALE: HORZ.: 1"=50'  
VERT.: 1"=5'

## SANITARY SEWER PROFILE

DATE:  
THIS DRAWING AND THE IDEAS, DESIGNS AND  
CONCEPTS CONTAINED HEREIN ARE THE EXCLUSIVE  
INTELLECTUAL PROPERTY OF THE SCHNEIDER  
CORPORATION AND ARE NOT TO BE USED OR  
REPRODUCED, IN WHOLE OR IN PART, WITHOUT  
THE WRITTEN CONSENT OF THE SCHNEIDER  
CORPORATION.  
© COPYRIGHTED BY THE SCHNEIDER CORP. (2003)

**Schneider**

THE SCHNEIDER CORPORATION  
Historic Fort Harrison  
8901 Otis Avenue  
Indianapolis, IN 46216-1037  
Telephone: 317.826.7100  
Fax: 317.826.7300  
www.schneidercorp.com

Architecture  
Civil Engineering  
Environmental Engineering  
Geotechnical Services  
GIS • LIS  
Home Builder Services  
Interior Design  
Land Surveying  
Landscape Architecture  
Transportation Engineering

**SUMMERLAKE AT SUMMERBROOK  
PHASE II, SECTION 4**

SEC. 28-T1N-R0E, MADISON COUNTY, INDIANA

C. P. MORGAN COMMUNITIES, L.P.  
4670 HAVEN POINT BLVD., INDIANAPOLIS, IN 46280

DATE: 2/10/03	PROJECT NO.: 3758.004
DRAWN BY: DMW	CHECKED BY:
SHEET TITLE: SANITARY SEWER PROFILES	
DRAWING FILES: R:\3\3758\004\DWG\S401-4 XREF-R:\3\3758\004\DWG\S485 XREF-R:\3\3758\004\DWG\S485 XREF-R:\3\3758\004\DWG\S485 XREF-R:\3\3758\004\DWG\S485 XREF-R:\3\3758\004\DWG\S485	

SHEET NO.:  
**C403**