

SURVEYED LOCATION OF SANITARY SEWER LATERAL MARKER. STATION IS FROM NEAREST DOWNSTREAM MANHOLE. \* INDICATES BASELINE EXTENSION.

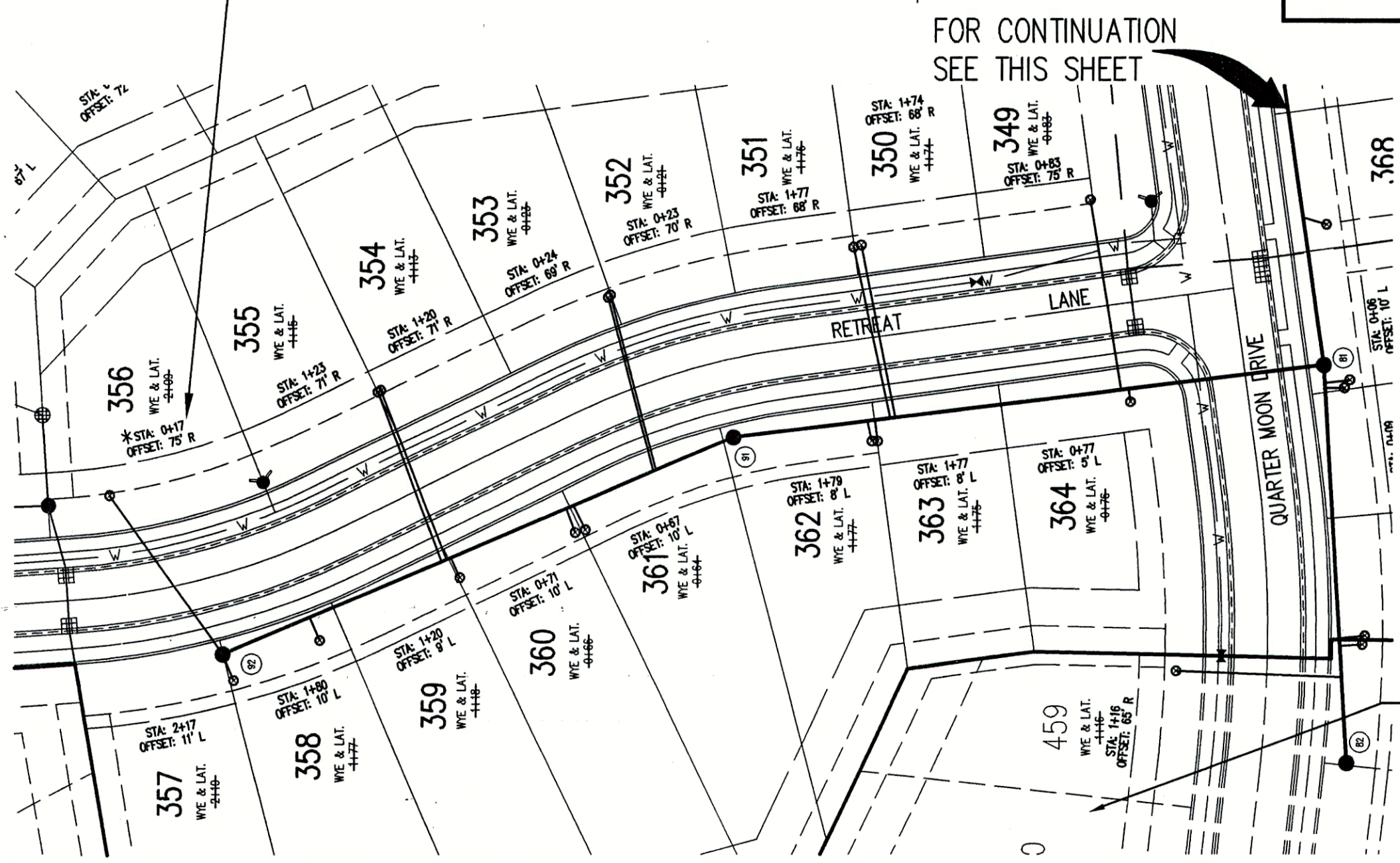
THERE ARE NO DRINKING WATER WELLS WITHIN 100' RADIUS OF ANY GRAVITY SANITARY SEWER LINES OR MANHOLES ON THIS PROJECT.

NOTE  
THE TOPOGRAPHIC SURVEY FOR THE SUBJECT SITE WAS PROVIDED BY OTHERS AND NOT PREPARED BY THE SCHNEIDER CORPORATION.  
ANY PORTION OF THESE PLANS BASED ON INFORMATION FROM SAID SURVEY IS, THEREFORE, EXPRESSLY EXCLUDED FROM THE WITHIN CERTIFICATION.

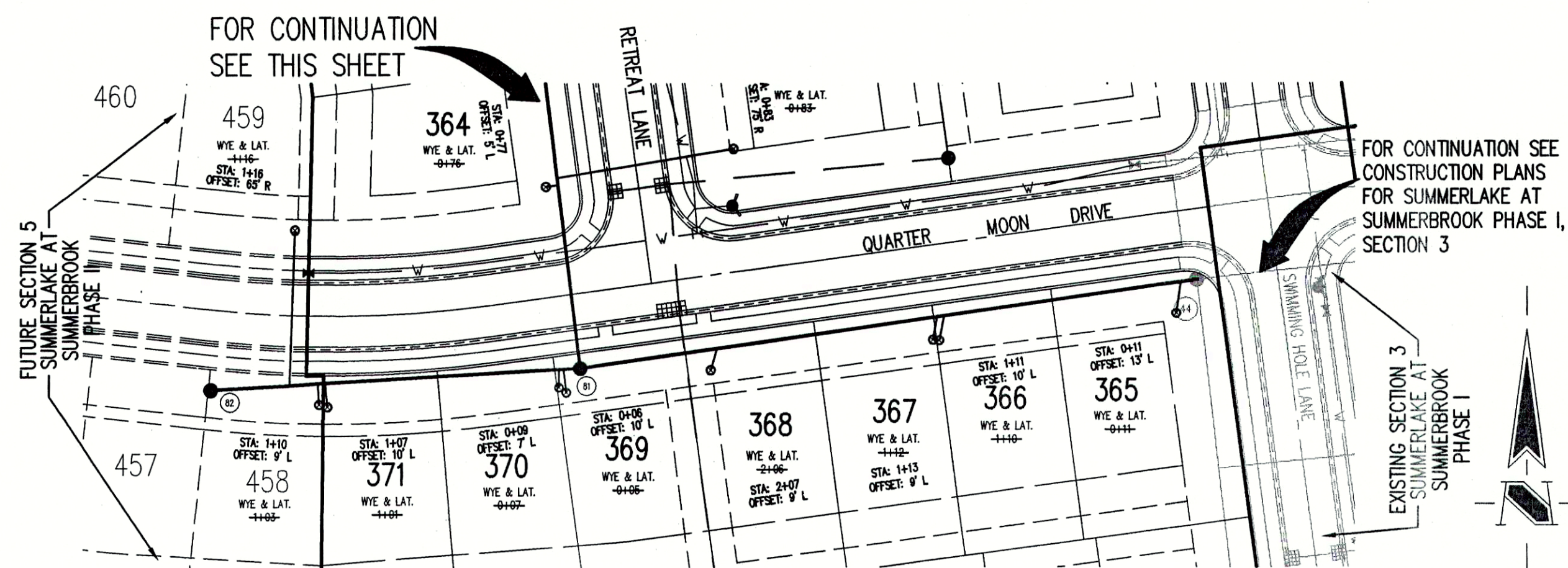
**BENCHMARK**  
Q236  
USC&GS Bronze disk set vertically in West face of NW corner old "Center School" building @ SE corner S.R. 13 & C.R. 800 South stamped "Q236 1947". ELEV. - 864.58 (NAVD 29)  
TBM #104  
R.R. Spike in North face of power pole #199-776 @ NW corner site, south side of C.R. 800 South. ELEV. - 849.09 (NAVD 29)  
TBM #2  
3/4" Iron pin in concrete at the center line of S.R. 13 and C.R. 800 South, flush with the pavement. ELEV. - 863.34 (NAVD 29)  
TBM #110  
PK Nail east side line on southeast corner form property 1/4" 800' south of C.R. 800 South. Approx. Coord. N-9200, E-7300. ELEV. - 858.57

Sheet	Number	Description
C802	1	Precast Reinforced Concrete Manhole
C802	2	Sanitary Sewer Bedding Detail
C802	3	Service Connection for Shallow Sewer
C802	4	Service Connection for Deep Sewer

- GENERAL NOTES**
- ALL WYE, LATERAL AND PROFILE STATIONS ARE FROM THE NEAREST DOWNSTREAM MANHOLE. (WH)
  - WYES AND LATERALS TO BE 6" PIPE UNLESS OTHERWISE SPECIFIED.
  - ALL WYE CONNECTIONS SHALL HAVE A MINIMUM OF FIVE FOOT LATERAL EXTENSION CONNECTED TO THE WYE, OR EXTEND TO THE UTILITY AND DRAINAGE EASEMENT OF THE LOT, WHICHEVER IS GREATER, BUT IN NO CASE SHOULD BE CLOSER THAN 7' TO THE PAD/BUILDING LINE. THE END OF THE LATERAL SHALL BE PLUGGED OR CAPPED, UNLESS OTHERWISE NOTED.
  - LATERALS RUNNING TO THE OPPOSITE SIDE OF STREET SHALL EXTEND TO THE UTILITY AND DRAINAGE EASEMENT OF THE LOT, BUT IN NO CASE SHOULD BE CLOSER THAN 7' TO THE PAD/BUILDING LINE, UNLESS OTHERWISE NOTED.
  - IT SHALL BE THE CONTRACTORS RESPONSIBILITY TO FIELD VERIFY ALL UTILITY LOCATIONS BEFORE CONSTRUCTION BEGINS.
  - TEMPORARY TRAFFIC CONTROL DURING CONSTRUCTION TO CONFORM TO APPLICABLE LOCAL AND STATE STANDARDS.
  - ALL CONSTRUCTION ACTIVITY ON THIS SITE TO BE PERFORMED IN COMPLIANCE WITH APPLICABLE O.S.H.A. STANDARDS FOR WORKER SAFETY.
  - CONTRACTOR SHALL MINIMIZE DAMAGE TO EXISTING TREES.
  - THE LOWEST FLOOR ELEVATION OF A HOME TO HAVE A GRAVITY SANITARY SEWER CONNECTION MUST BE A MINIMUM OF ONE (1) FOOT ABOVE THE TOP OF CASTING ELEVATION OF EITHER THE FIRST UPSTREAM OR DOWNSTREAM MANHOLE ON THE PUBLIC SEWER TO WHICH THE CONNECTION IS TO BE MADE, OR A GRINDER PUMP SHALL BE REQUIRED.
  - DUCTILE IRON (D.I.) PIPE SHALL BE INSTALLED WHERE NOTED ON PROFILES. REFER TO SHEET C901 FOR SPECIFICATIONS.
  - THE FINISHED FLOOR OF THE HOME IS SIXTEEN (16) INCHES HIGHER THAN THE NOTED PAD ELEVATION.

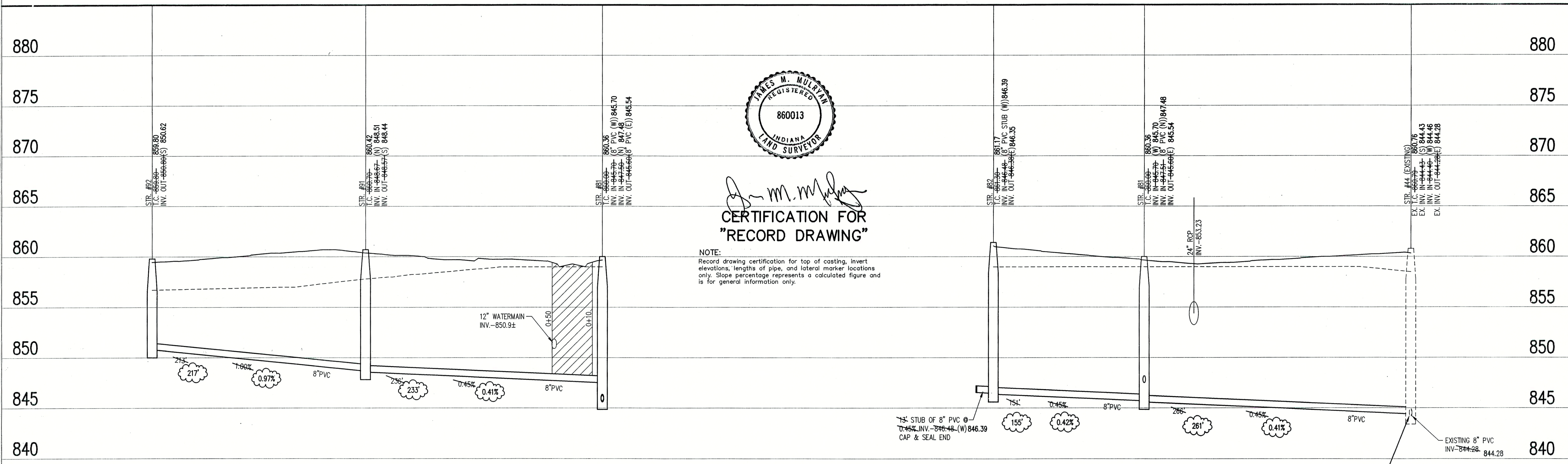


HOLEY MOLEY SAYS  
"DON'T DIG BLIND"  
"IT'S THE LAW"  
CALL 2 WORKING DAYS BEFORE YOU DIG  
1-800-382-5544  
CALL TOLL FREE  
PER INDIANA STATE LAW (IS-69-1991)  
IT IS AGAINST THE LAW TO EXCAVATE  
WITHOUT NOTIFYING THE UNDERGROUND  
LOCATION SERVICE (IND 2) WORKING  
DAYS BEFORE COMMENCING WORK.



## SANITARY SEWER PLAN

SCALE: 1"=50'



**CERTIFICATION FOR "RECORD DRAWING"**

NOTE:  
Record drawing certification for top of casting, invert elevations, lengths of pipe, and lateral marker locations only. Slope percentage represents a calculated figure and is for general information only.

## SANITARY SEWER RECORD DRAWING

### SANITARY SEWER PROFILE

LEGEND		
Existing Grade	New Grade	Granular Backfill

SCALE: HORZ.: 1"=50'  
VERT.: 1"=5'

CONTRACTOR MUST FIELD VERIFY EXISTING INVERTS PRIOR TO CONSTRUCTION. IF A VARIATION EXISTS, THEN CONTACT THE ENGINEER IMMEDIATELY.

REVISIONS:  
1. DTR 3/14/03, MOVED LOT #49 SANITARY SEWER SERVICE LATERAL.  
2. DWM 5/22/03-UPDATED PER RECORD DRAWING INFORMATION.

DATE:  
THIS DRAWING AND THE IDEAS, DESIGNS AND CONCEPTS CONTAINED HEREIN ARE THE EXCLUSIVE INTELLECTUAL PROPERTY OF THE SCHNEIDER CORPORATION, AND ARE NOT TO BE USED OR REPRODUCED, IN WHOLE OR IN PART, WITHOUT THE WRITTEN CONSENT OF THE SCHNEIDER CORPORATION.  
© COPYRIGHTED BY THE SCHNEIDER CORP. (2003)

**Schneider**  
THE SCHNEIDER CORPORATION  
Historic Fort Harrison  
8901 Otis Avenue  
Indianapolis, IN 46216-1037  
Telephone: 317.826.7100  
Fax: 317.826.7300  
www.schneidercorp.com  
Architecture  
Civil Engineering  
Environmental Engineering  
Geotechnical Services  
GIS \* LIS  
Home Builder Services  
Interior Design  
Land Surveying  
Landscape Architecture  
Transportation Engineering

**SUMMERLAKE AT SUMMERBROOK**  
PHASE II, SECTION 4  
SEC. 28-T18N-R8E, MADISON COUNTY, INDIANA  
C. P. MORGAN COMMUNITIES, L.P.  
4670 HAVEN POINT BLVD., INDIANAPOLIS, IN 46290

DATE: 2/10/03  
PROJECT NO.: 3758.004  
DRAWN BY: DWM  
CHECKED BY:  
SHEET TITLE: SANITARY SEWER PROFILES  
DRAWING FILES:  
R:\3\3758\004\DWG\C401-4  
XREF-R:\3\3758\004\DWG\3758-004.DWG  
XREF-R:\3\3758\004\DWG\SANITARY  
XREF-R:\3\3758\002\DWG\3758-002.DWG  
XREF-R:\3\3758\003\DWG\3758-003.DWG  
XREF-R:\3\3758\005\DWG\3758-005.DWG

SHEET NO.:  
**C402**