

GENERAL NOTES

1. ALL WYE, LATERAL AND PROFILE STATIONS ARE FROM THE NEAREST DOWNSTREAM MANHOLE (MH).
2. WYES AND LATERALS TO BE 6" PIPE UNLESS OTHERWISE SPECIFIED.
3. ALL WYE CONNECTIONS SHALL HAVE A MINIMUM OF FIVE FOOT LATERAL EXTENSION CONNECTED TO THE WYE, OR EXTEND TO THE UTILITY AND DRAINAGE EASEMENT OF THE LOT, WHICHEVER IS GREATER, BUT IN NO CASE SHOULD BE CLOSER THAN 7' TO THE PAD/BUILDING LINE. THE END OF THE LATERAL SHALL BE PLUGGED OR CAPPED, UNLESS OTHERWISE NOTED.
4. LATERALS RUNNING TO THE OPPOSITE SIDE OF STREET SHALL EXTEND TO THE UTILITY AND DRAINAGE EASEMENT OF THE LOT, BUT IN NO CASE SHOULD BE CLOSER THAN 7' TO THE PAD/BUILDING LINE, UNLESS OTHERWISE NOTED.
5. IT SHALL BE THE CONTRACTOR'S RESPONSIBILITY TO FIELD VERIFY ALL UTILITY LOCATIONS BEFORE CONSTRUCTION BEGINS.
6. TEMPORARY TRAFFIC CONTROL DURING CONSTRUCTION TO CONFORM TO APPLICABLE LOCAL AND STATE STANDARDS.
7. ALL CONSTRUCTION ACTIVITY ON THIS SITE TO BE PERFORMED IN COMPLIANCE WITH APPLICABLE O.S.H.A. STANDARDS FOR WORKER SAFETY.
8. CONTRACTOR SHALL MINIMIZE DAMAGE TO EXISTING TREES.
9. THE LOWEST FLOOR ELEVATION OF A HOME TO HAVE A GRAVITY SANITARY SEWER CONNECTION MUST BE A MINIMUM OF ONE (1) FOOT ABOVE THE TOP OF CASTING ELEVATION OF EITHER THE FIRST UPSTREAM OR DOWNSTREAM MANHOLE ON THE PUBLIC SEWER TO WHICH THE CONNECTION IS TO BE MADE, OR A GRINDER PUMP SHALL BE REQUIRED.
10. DUCTILE IRON (D.I.) PIPE SHALL BE INSTALLED WHERE NOTED ON PROFILES. REFER TO SHEET C901 FOR SPECIFICATIONS.
11. THE FINISHED FLOOR OF THE HOME IS SIXTEEN (16) INCHES HIGHER THAN THE NOTED PAD ELEVATION.

NOTE
THE TOPOGRAPHIC SURVEY FOR THE SUBJECT SITE WAS PROVIDED BY OTHERS AND NOT PREPARED BY THE SCHNEIDER CORPORATION.
ANY PORTION OF THESE PLANS BASED ON INFORMATION FROM SAID SURVEY IS, THEREFORE EXPRESSLY EXCLUDED FROM THE WITHIN CERTIFICATION.

THERE ARE NO DRINKING WATER WELLS WITHIN 100' RADIUS OF ANY GRAVITY SANITARY SEWER LINES OR MANHOLES ON THIS PROJECT.

BENCHMARK

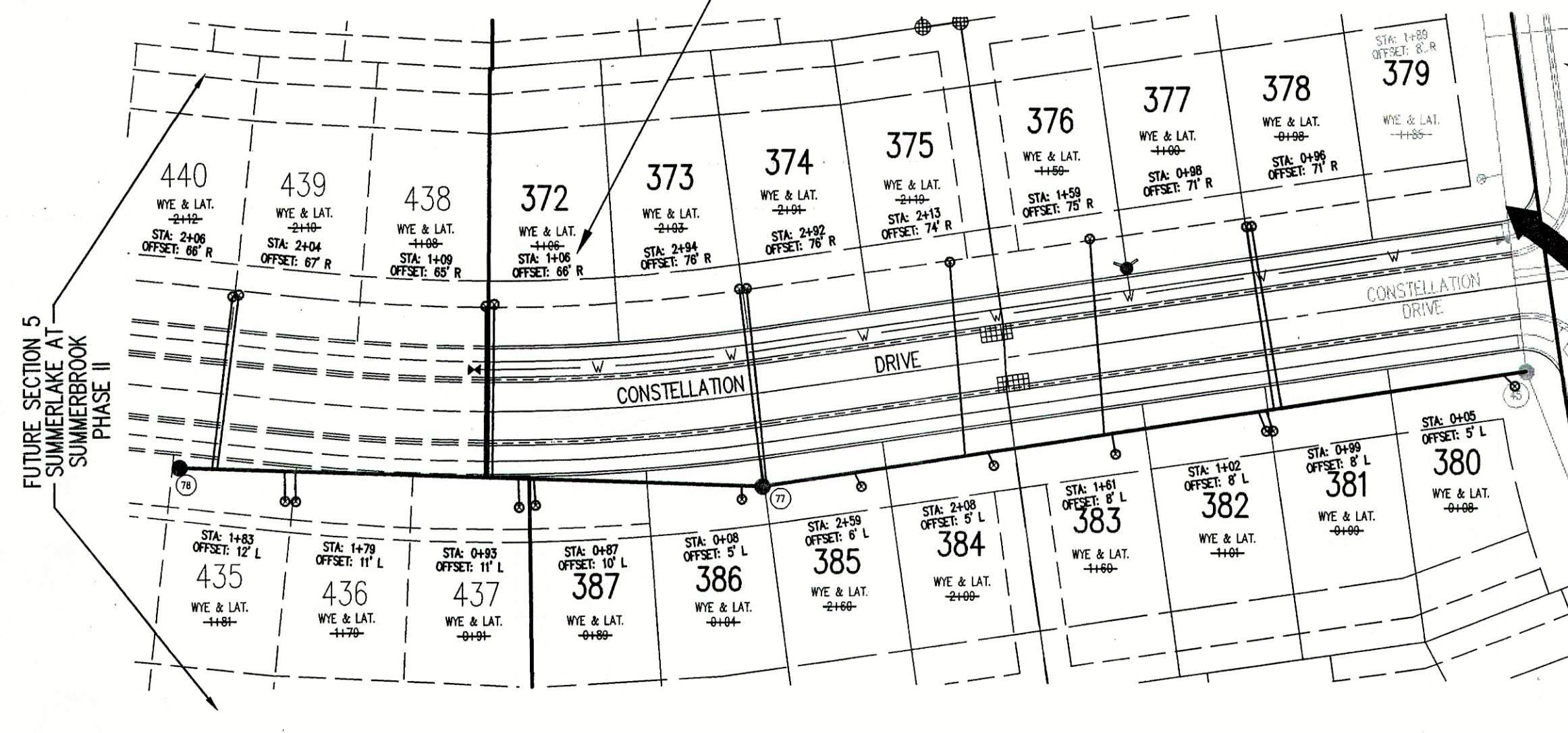
G236
USC&GS Bronze disk set vertically in West face of NW corner old "Center School" building @ SE corner S.R. 13 & C.R. 800 South stamped "G236 1947". ELEV. - 864.58 (NAVD 29)
TBM #104
R.R. Spike in North face of power pole #199-776 @ NW corner site, south side of C.R. 800 South. ELEV. - 849.09 (NAVD 29)
TBM #2
3/4" iron pin in concrete at the center line of S.R. 13 and C.R. 800 South, flush with the pavement. ELEV. - 863.34 (NAVD 29)
TBM #110
PK Nail east side tree on southeast corner farm property +/- 800' south of C.R. 800 South. Approx. Coord. N-9200, E-7300. ELEV. - 858.57

Sheet	Detail	Description
C802	1	Precast Reinforced Concrete Manhole
C802	3	Sanitary Sewer Bedding Detail
C802	4	Service Connection for Shallow Sewer

LEGEND/DETAILS

NOTE

SURVEYED LOCATION OF SANITARY SEWER LATERAL MARKER. STATION IS FROM NEAREST DOWNSTREAM MANHOLE.
* INDICATES BASELINE EXTENSION.

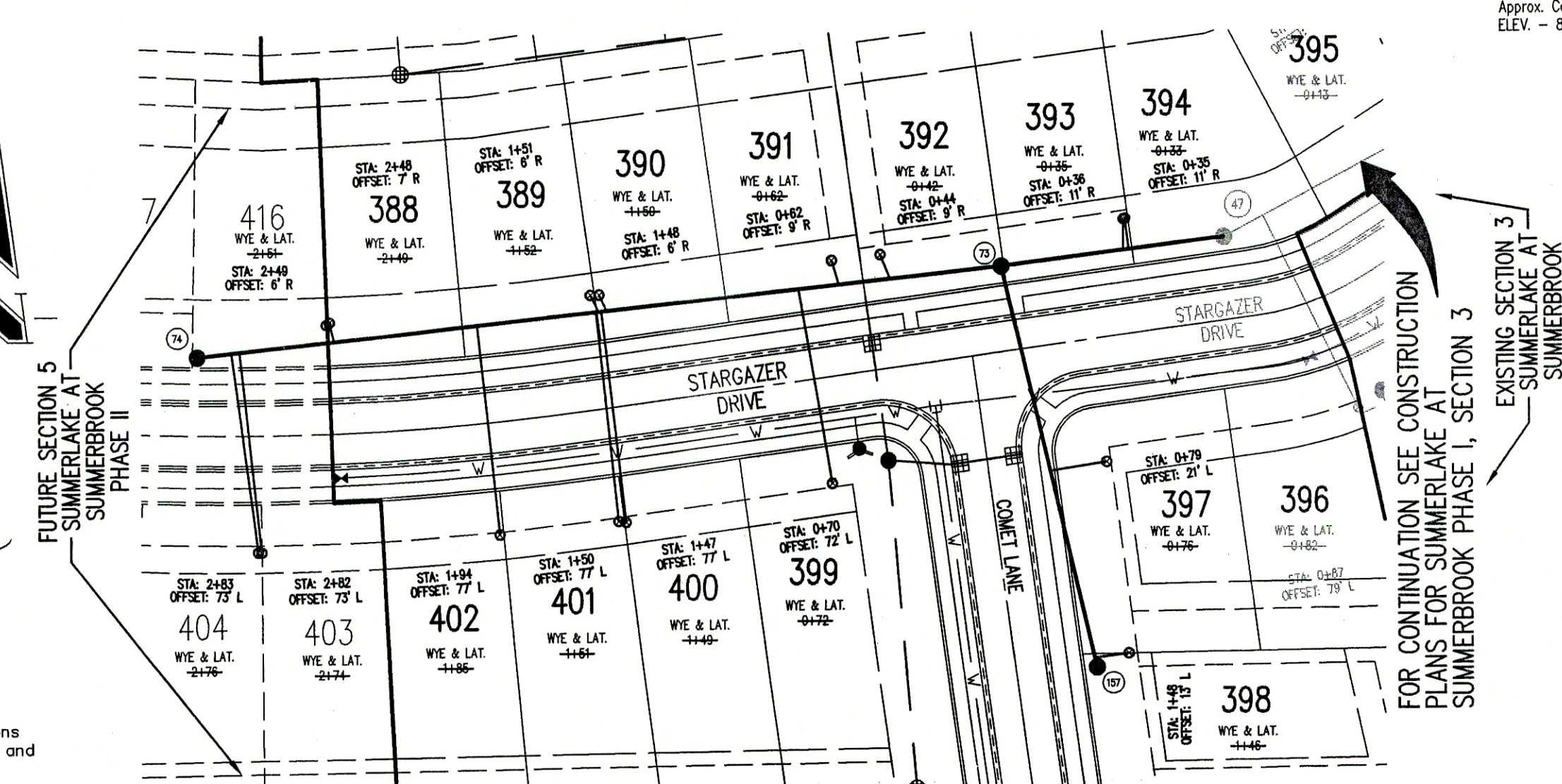


EXISTING SECTION 3
SUMMERLAKE AT
SUMMERBROOK
PHASE I



CERTIFICATION FOR "RECORD DRAWING"

NOTE:
Record drawing certification for top of casting, invert elevations, lengths of pipe, and lateral marker locations only. Slope percentage represents a calculated figure and is for general information only.

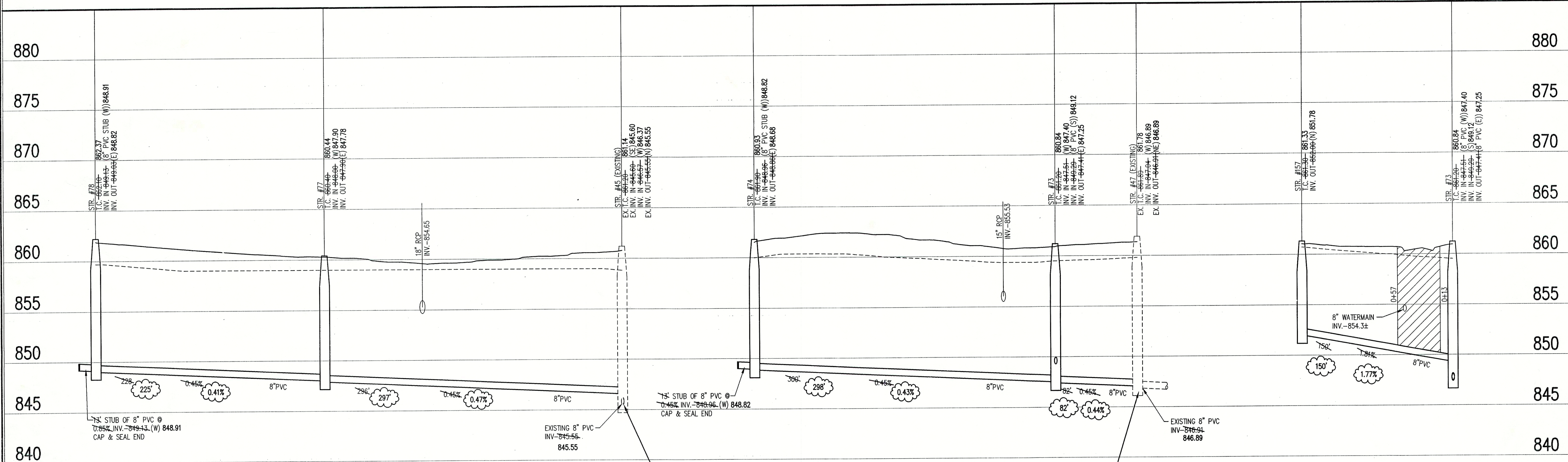


FOR CONTINUATION SEE CONSTRUCTION PLANS FOR SUMMERLAKE AT SUMMERBROOK PHASE I, SECTION 3
EXISTING SECTION 3
SUMMERLAKE AT
SUMMERBROOK
PHASE I

HOLEY MOLEY SAYS "DON'T DIG BLIND"
"IT'S THE LAW"
CALL 2 WORKING DAYS BEFORE YOU DIG
1-800-382-5544
CALL TOLL FREE
PER INDIANA STATE LAW 15-59-199L IT IS AGAINST THE LAW TO EXCAVATE WITHOUT NOTIFYING THE UNDERGROUND LOCATION SERVICE TWO (2) WORKING DAYS BEFORE COMMENCING WORK.

SANITARY SEWER PLAN

SCALE: 1"=50'



CONTRACTOR MUST FIELD VERIFY EXISTING INVERTS PRIOR TO CONSTRUCTION. IF A VARIATION EXISTS, THEN CONTACT THE ENGINEER IMMEDIATELY.

CONTRACTOR MUST FIELD VERIFY EXISTING INVERTS PRIOR TO CONSTRUCTION. IF A VARIATION EXISTS, THEN CONTACT THE ENGINEER IMMEDIATELY.

SANITARY SEWER RECORD DRAWING

SANITARY SEWER PROFILE

LEGEND		
	Existing Grade	
	New Grade	
	Granular Backfill	

SCALE: HORZ.: 1"=50'
VERT.: 1"=5'



THE SCHNEIDER CORPORATION
Historic Fort Harrison
8901 Otis Avenue
Indianapolis, IN 46216-1037
Telephone: 317.826.7100
Fax: 317.826.7300
www.schneidercorp.com

Architecture
Civil Engineering
Environmental Engineering
Geotechnical Services
GIS * LIS
Home Builder Services
Interior Design
Land Surveying
Landscape Architecture
Transportation Engineering

SUMMERLAKE AT SUMMERBROOK
PHASE II, SECTION 4
SEC. 28-T8N-86E, MADISON COUNTY, INDIANA
C. P. MORGAN COMMUNITIES, L.P.
4670 HAVEN POINT BLVD., INDIANAPOLIS, IN. 46280

DATE: 2/10/03 PROJECT NO.: 3758.004
DRAWN BY: DWW CHECKED BY:

SHEET TITLE: SANITARY SEWER PROFILES

DRAWING FILES:
R:\3K\3758\004\DWG\CA01-4
XREF-R:\3K\3758\004\DWG\3758
XREF-R:\3K\3758\004\DWG\3758
XREF-R:\3K\3758\004\DWG\3758
XREF-R:\3K\3758\004\DWG\3758
XREF-R:\3K\3758\004\DWG\3758

SHEET NO.:

C401