

Sheet	Detail	Description
C802	1	Precast Reinforced Concrete Manhole
C802	3	Sanitary Sewer Bedding Detail
C802	4	Service Connection for Shallow Sewer
C802	5	Service Connection for Deep Sewer

HOLEY MOLEY SAYS
**"DON'T
 BLIND"**

"IT'S THE LAW"
 CALL 2 WORKING DAYS BEFORE YOU DIG
1-800-382-5544
 CALL TOLL FREE
 PER INDIANA STATE LAW (S-69-1991)
 IT IS AGAINST THE LAW TO EXCAVATE
 WITHOUT NOTIFYING THE UNDERGROUND
 LOCATION SERVICE TWO (2) WORKING
 DAYS BEFORE COMMENCING WORK.

THERE ARE NO DRINKING WATER WELLS
 WITHIN 100' RADIUS OF ANY GRAVITY
 SANITARY SEWER LINES OR MANHOLES
 ON THIS PROJECT.

NOTE
 THE TOPOGRAPHIC SURVEY FOR THE SUBJECT SITE
 WAS PROVIDED BY OTHERS AND NOT PREPARED BY
 THE SCHNEIDER CORPORATION.
 ANY PORTION OF THESE PLANS BASED ON
 INFORMATION FROM SAID SURVEY IS, THEREFORE
 EXPRESSLY EXCLUDED FROM THE WITHIN CERTIFICATION.

SURVEYED LOCATION OF SANITARY SEWER
 LATERAL MARKER. STATION IS FROM
 NEAREST DOWNSTREAM MANHOLE.
 * INDICATES BASELINE EXTENSION.

SANITARY SEWER LOT LATERAL FOR
 LOT 127 TO BE CONSTRUCTED TO
 GO UNDER PROPOSED STORM SEWER
 WITH 18" MINIMUM CLEARANCE.

FOR CONTINUATION
 SEE SHEET C402

FOR CONTINUATION
 SEE SHEET C402

GENERAL NOTES

- ALL WYE, LATERAL AND PROFILE STATIONS ARE FROM THE NEAREST DOWNSTREAM MANHOLE. (MH)
- WYES AND LATERALS TO BE 6" PIPE UNLESS OTHERWISE SPECIFIED.
- ALL WYE CONNECTIONS SHALL HAVE A MINIMUM OF FIVE FOOT LATERAL EXTENSION CONNECTED TO THE WYE, OR EXTEND TO THE UTILITY AND DRAINAGE EASEMENT OF THE LOT, WHICHEVER IS GREATER, BUT IN NO CASE SHOULD BE CLOSER THAN 5' TO THE BUILDING LINE. THE END OF THE LATERAL SHALL BE PLUGGED OR CAPPED, UNLESS OTHERWISE NOTED.
- LATERALS RUNNING TO THE OPPOSITE SIDE OF STREET SHALL EXTEND TO THE UTILITY AND DRAINAGE EASEMENT OF THE LOT, BUT IN NO CASE SHOULD BE CLOSER THAN 5' TO THE BUILDING LINE, UNLESS OTHERWISE NOTED.
- IT SHALL BE THE CONTRACTORS RESPONSIBILITY TO FIELD VERIFY ALL UTILITY LOCATIONS BEFORE CONSTRUCTION BEGINS.
- TEMPORARY TRAFFIC CONTROL DURING CONSTRUCTION TO CONFORM TO APPLICABLE LOCAL AND STATE STANDARDS.
- ALL CONSTRUCTION ACTIVITY ON THIS SITE TO BE PERFORMED IN COMPLIANCE WITH APPLICABLE O.S.H.A. STANDARDS FOR WORKER SAFETY.
- CONTRACTOR SHALL MINIMIZE DAMAGE TO EXISTING TREES.
- THE LOWEST FLOOR ELEVATION OF A HOME TO HAVE A GRAVITY SANITARY SEWER CONNECTION MUST BE A MINIMUM OF ONE (1) FOOT ABOVE THE TOP OF CASTING ELEVATION OF EITHER THE FIRST UPSTREAM OR DOWNSTREAM MANHOLE ON THE PUBLIC SEWER TO WHICH THE CONNECTION IS TO BE MADE, OR A GRINDER PUMP SHALL BE REQUIRED.
- DUCTILE IRON (D.I.) PIPE SHALL BE INSTALLED WHERE NOTED ON PROFILES. REFER TO SHEET C901 FOR SPECIFICATIONS.
- THE FINISHED FLOOR OF THE HOME IS SIXTEEN (16) INCHES HIGHER THAN THE NOTED PAD ELEVATION.



**CERTIFICATION FOR
 "RECORD DRAWING"**

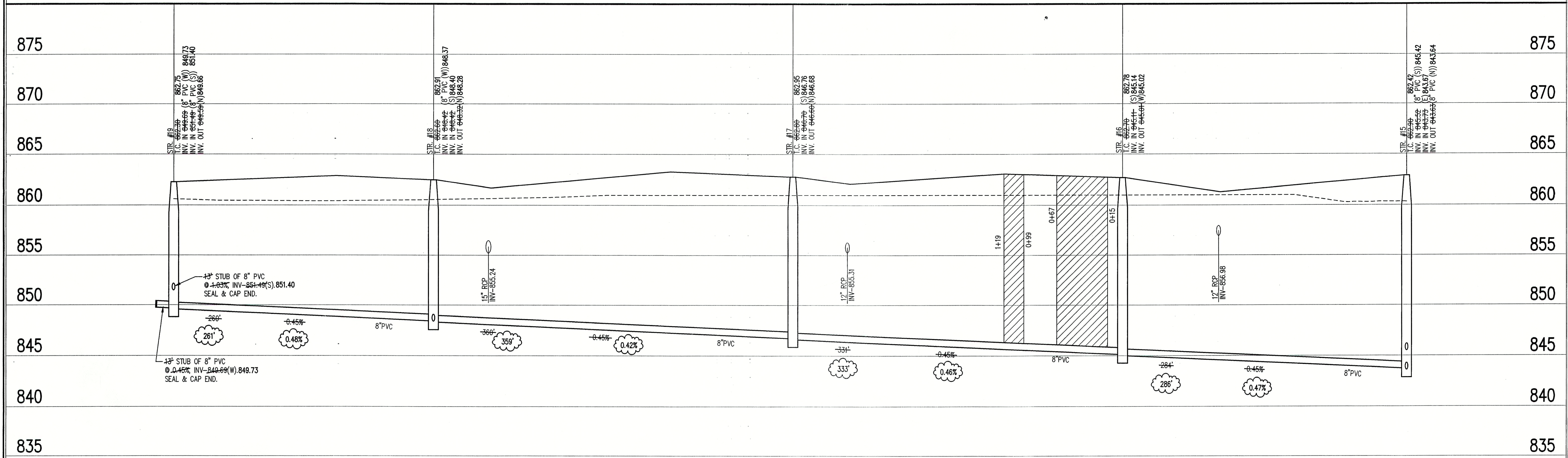
NOTE:
 Record drawing certification for top of casting, invert
 elevations, lengths of pipe, and lateral marker locations
 only. Slope percentage represents a calculated figure and
 is for general information only.

BENCHMARK

G236
 US&GS Bronze disk set vertically in West face of
 NW corner old "Center School" building @ SE corner
 S.R. 13 & C.R. 800 South stamped "G236 1947".
 ELEV. = 864.58 (NAVD 29)
 TBM #104
 R.R. Spike in North face of power pole #199-776 @
 NW corner site, south side of C.R. 800 South.
 ELEV. = 849.09 (NAVD 29)
 TBM #2
 3/4" iron pin in concrete at the center line of
 S.R. 13 and C.R. 800 South, flush with the pavement.
 ELEV. = 863.34 (NAVD 29)
 TBM #110
 PK Nail east side tree on southeast corner farm
 property +/- 800' south of C.R. 800 South.
 Approx. Coord. N-9200, E-7300.
 ELEV. = 858.57

SANITARY SEWER PLAN

SCALE: 1"=50'



SANITARY SEWER RECORD DRAWING

LEGEND		
Existing Grade	New Grade	Granular Backfill

SCALE: $\frac{HORIZ.: 1"=50'}{VERT.: 1"=5'}$

SANITARY SEWER PROFILE

REVISIONS:
 1. DWG. 10/10/02. UPDATED PER SANITARY SEWER RECORD DRAWING INFORMATION.

DATE:
 THIS DRAWING AND THE IDEAS, DESIGNS AND
 CONCEPTS CONTAINED HEREIN ARE THE EXCLUSIVE
 INTELLECTUAL PROPERTY OF THE SCHNEIDER
 CORPORATION, AND ARE NOT TO BE USED OR
 REPRODUCED, IN WHOLE OR IN PART, WITHOUT
 THE WRITTEN CONSENT OF THE SCHNEIDER
 CORPORATION.
 © COPYRIGHTED BY THE SCHNEIDER CORP. (2002)

Schneider

THE SCHNEIDER CORPORATION
 Historic Fort Harrison
 8901 Otis Avenue
 Indianapolis, IN 46216-1037
 Telephone: 317.826.7100
 Fax: 317.826.7300
 www.schneidercorp.com

Architecture
 Civil Engineering
 Environmental Engineering
 Geotechnical Services
 GIS + LIS
 Home Builder Services
 Interior Design
 Land Surveying
 Landscape Architecture
 Transportation Engineering

SUMMERLAKE AT SUMMERBROOK
 PHASE I, SECTION 2
 MADISON COUNTY, INDIANA

C. P. MORGAN COMMUNITIES, L.P.
 301 EAST CARMEL DRIVE, SUITE E-300, CARMEL, IN. 46032-2892

DATE: 3/7/02	PROJECT NO.: 3758.002
DRAWN BY: DMW	CHECKED BY:
SHEET TITLE: SANITARY SEWER PROFILES	
DRAWING FILES: R:\3K\3758\002\DWG\S\C401-3 XREF-R:\3K\3758\002\DWG\S\285 XREF-R:\3K\3758\002\DWG\S\SANITARY XREF-R:\3K\3758\003\DWG\S\385 XREF-R:\3K\3758\001\DWG\S\185	
SHEET NO.: C403	