

CONTRACTOR SHALL ADHERE
AND REFERENCE THE CURRENT
FALL CREEK REGIONAL WASTE
DISTRICT STANDARDS FOR
DESIGN AND CONSTRUCTION
OF SANITARY SEWERS.

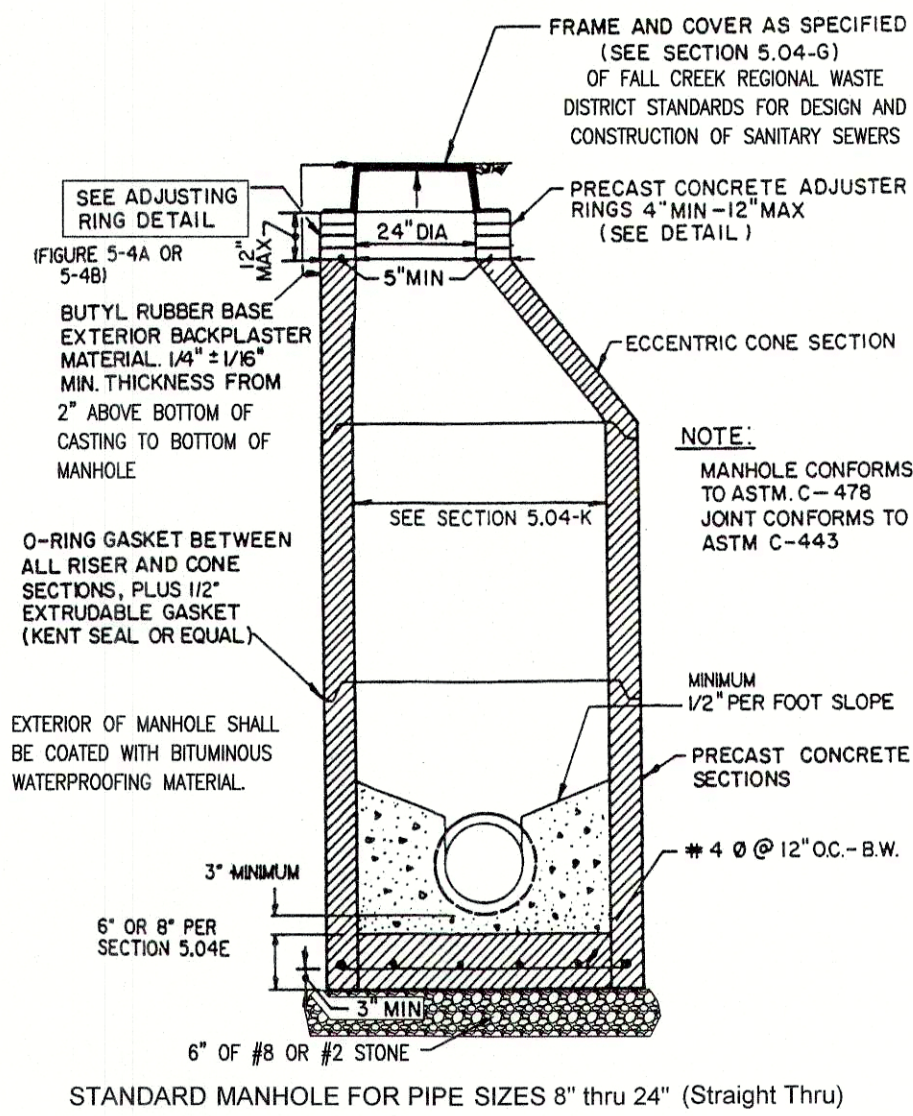


FIGURE 5-

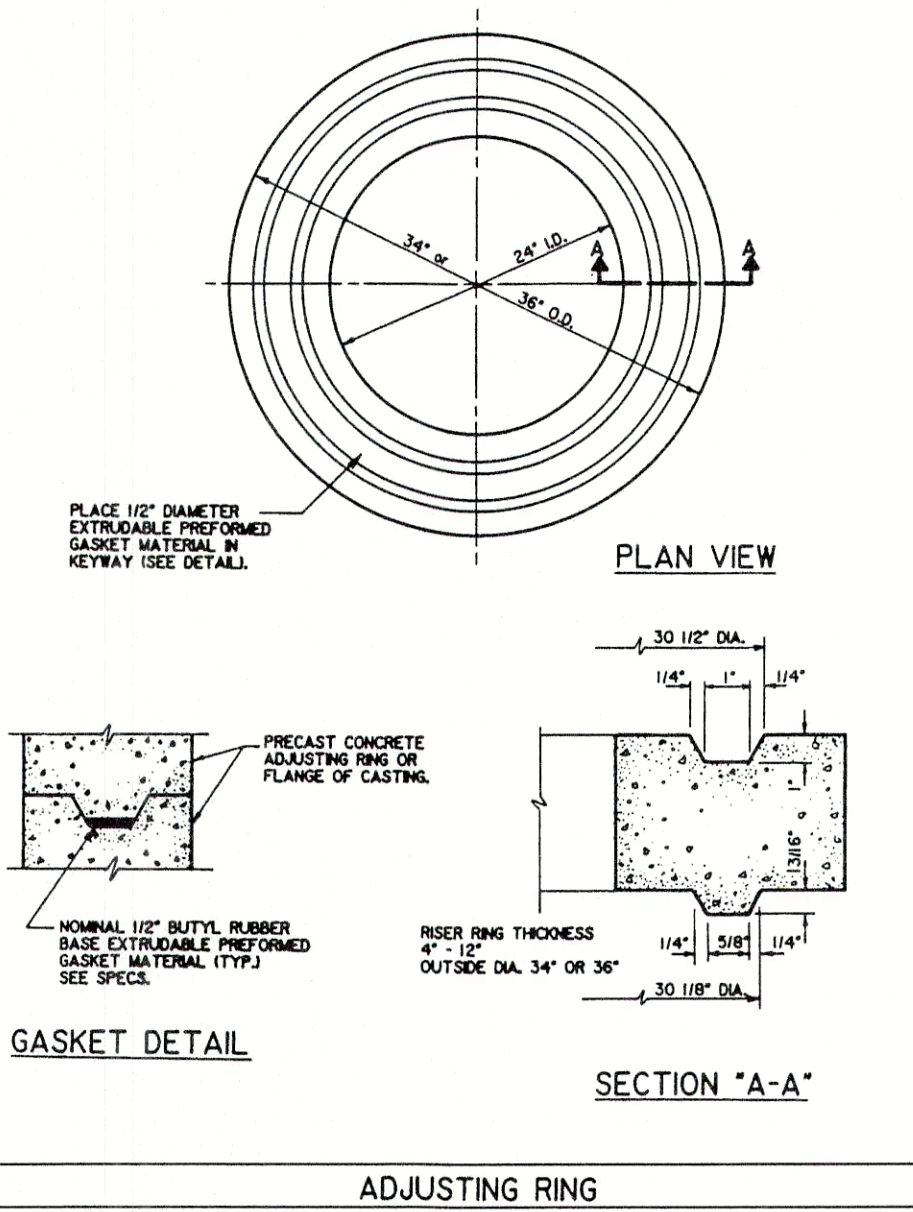


FIGURE 5-4A

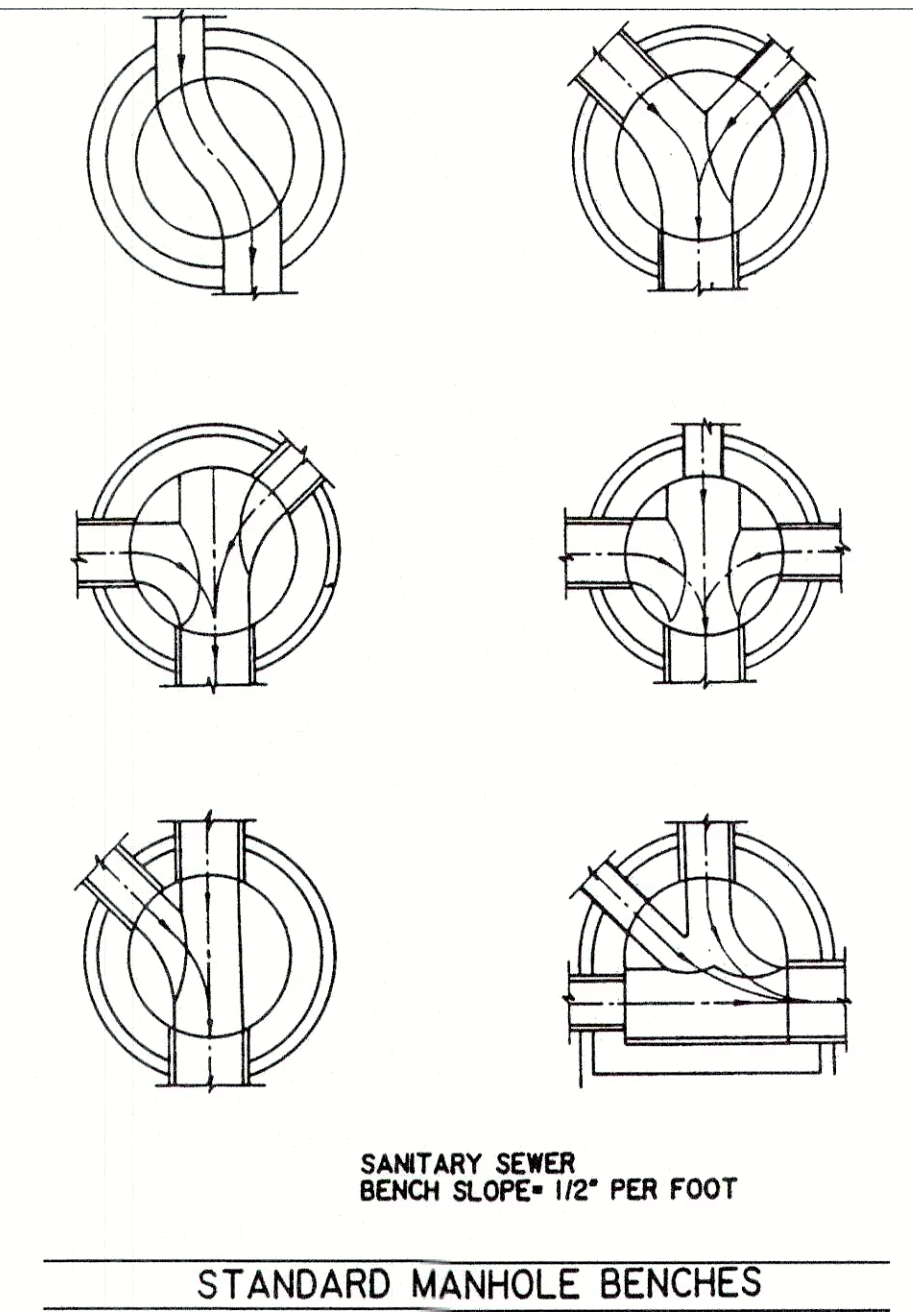
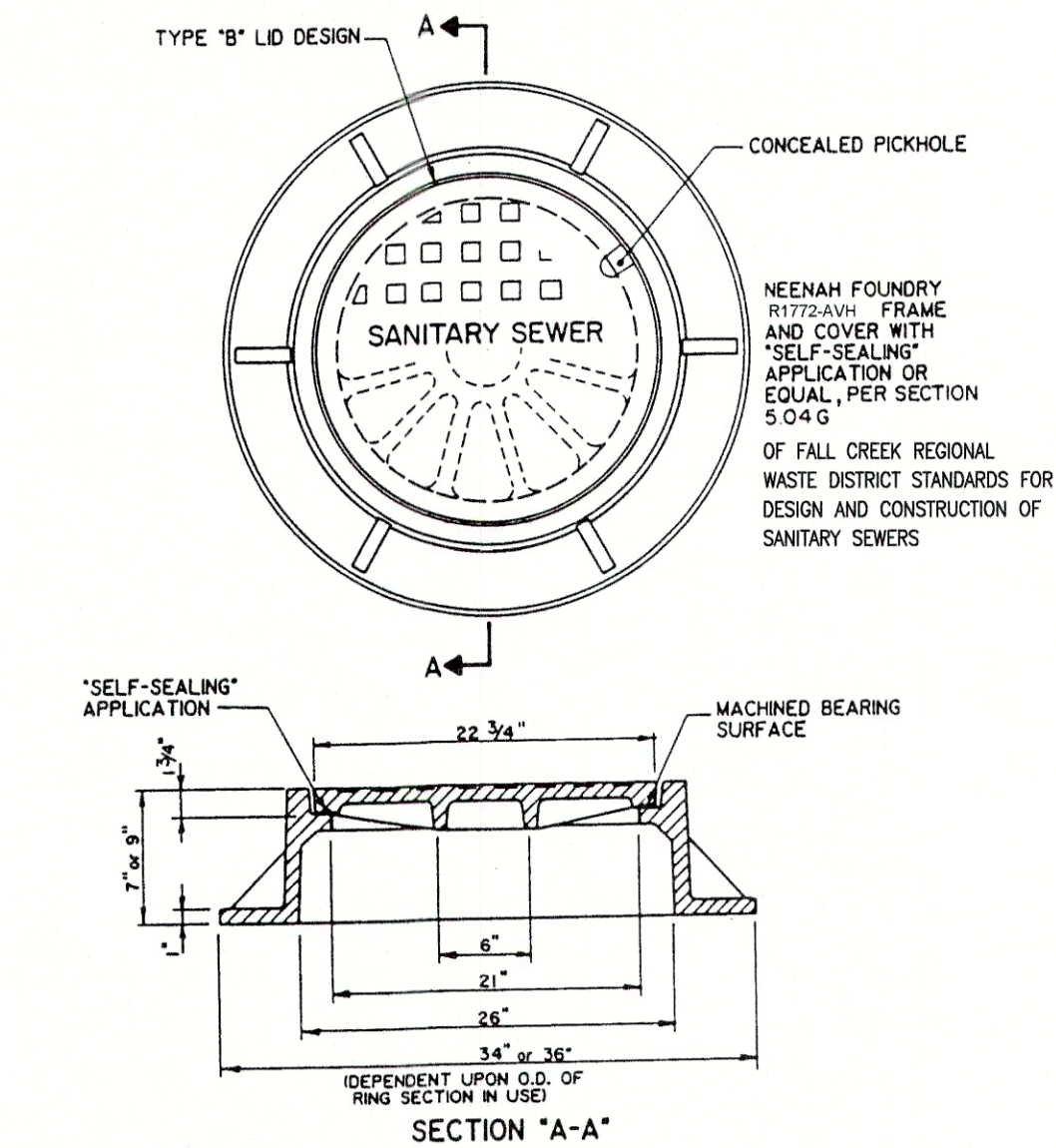


FIGURE 5-6



SANITARY SEWER MANHOLE
FRAME & COVER - STANDARD MANHOLE

FIGURE 5-7

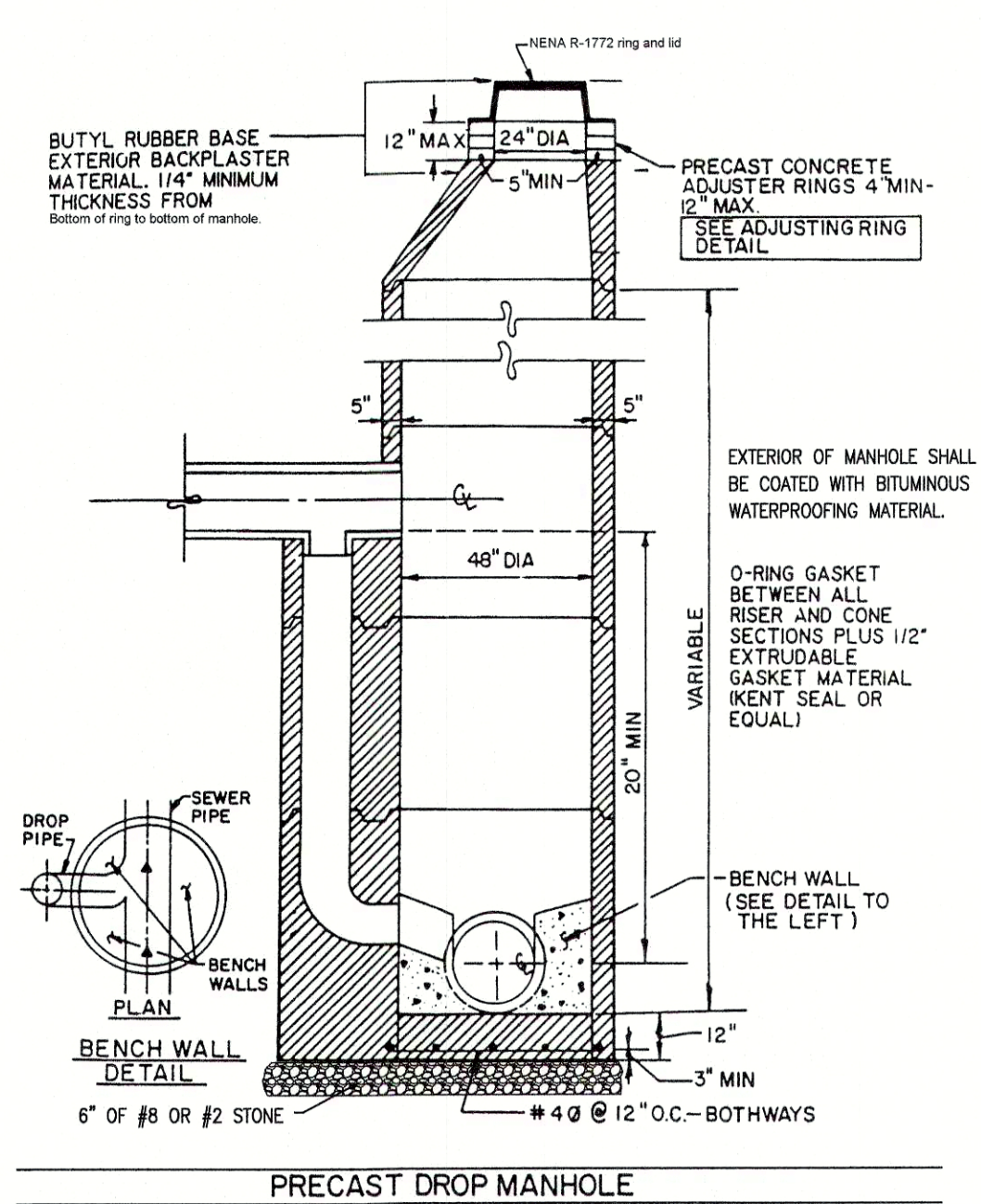


FIGURE 5-8

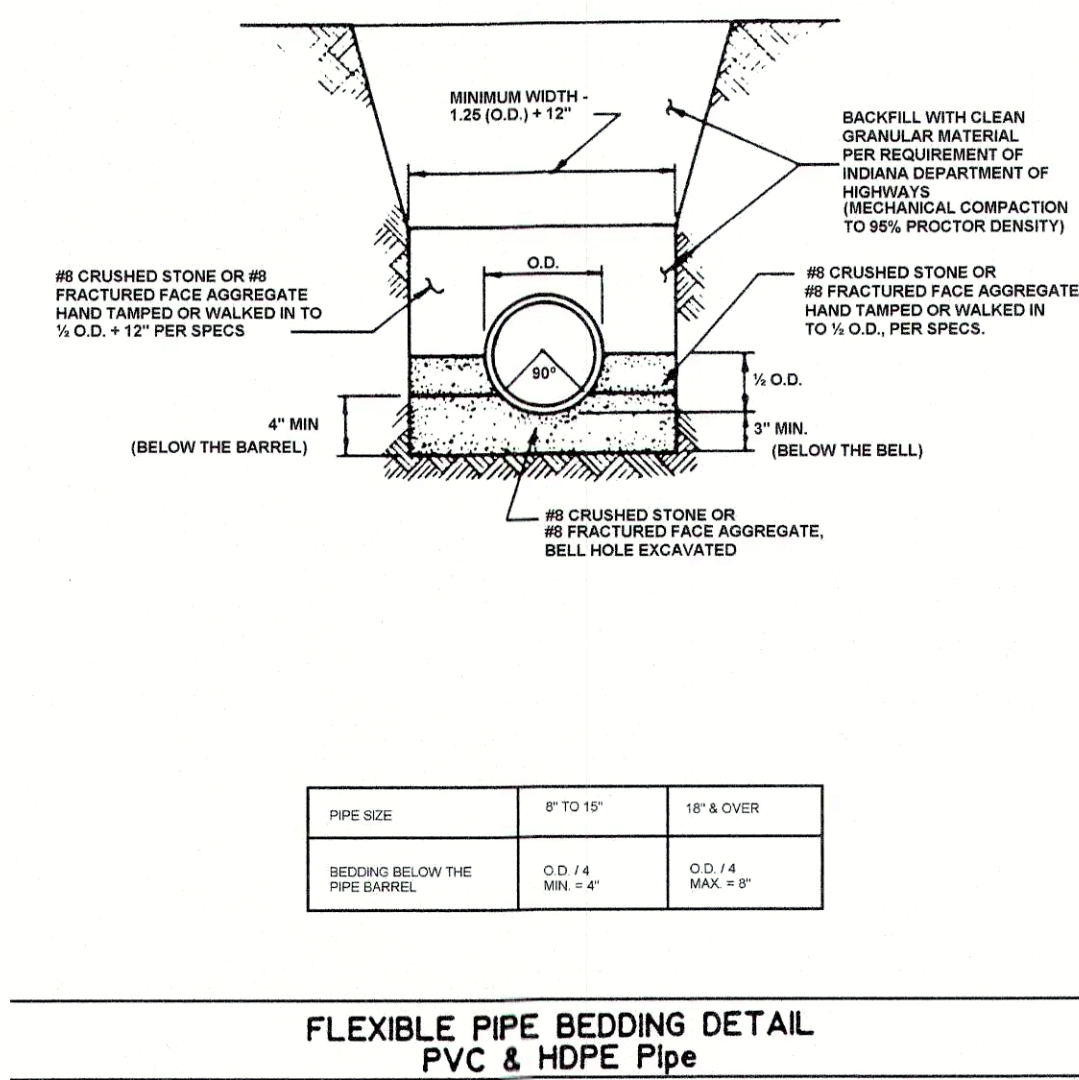
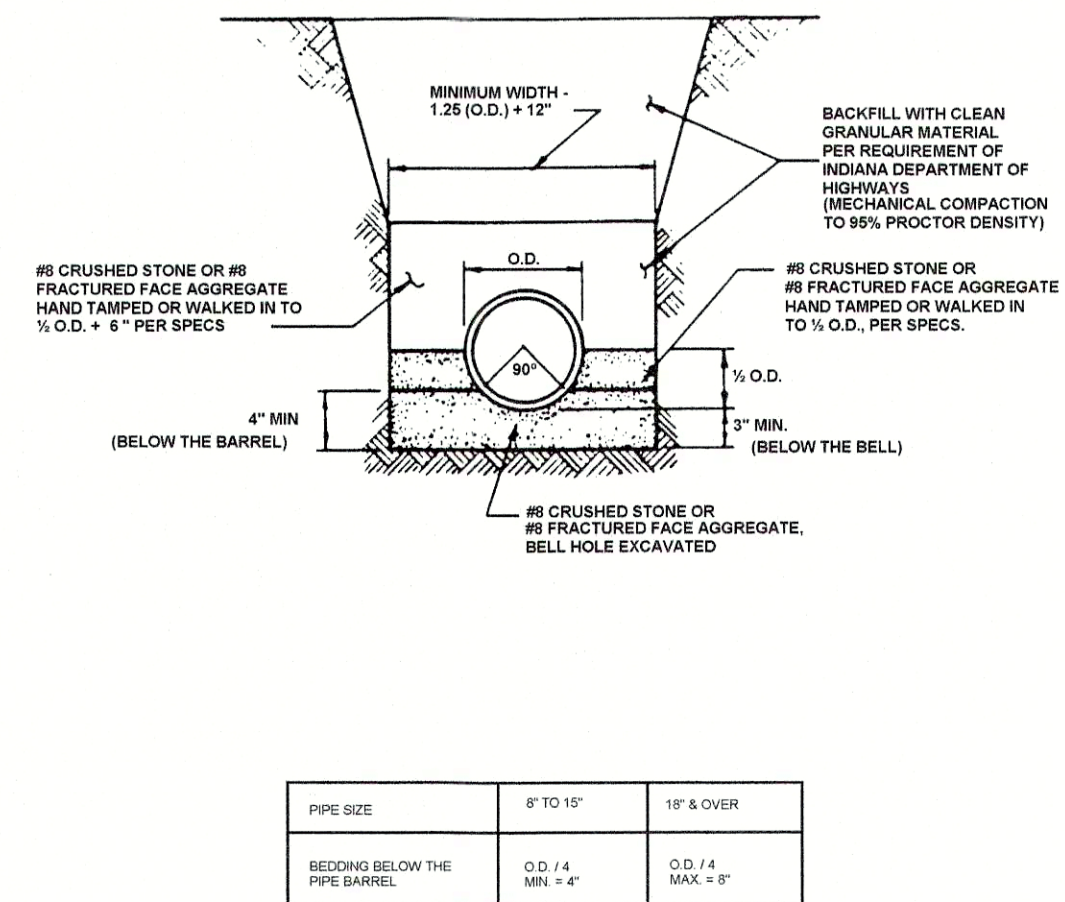


FIGURE 7-



SEMI-RIGID PIPE BEDDING DETAIL (PVC Composite Pipe & Ductile Iron Pipe)

FIGURE 7-2

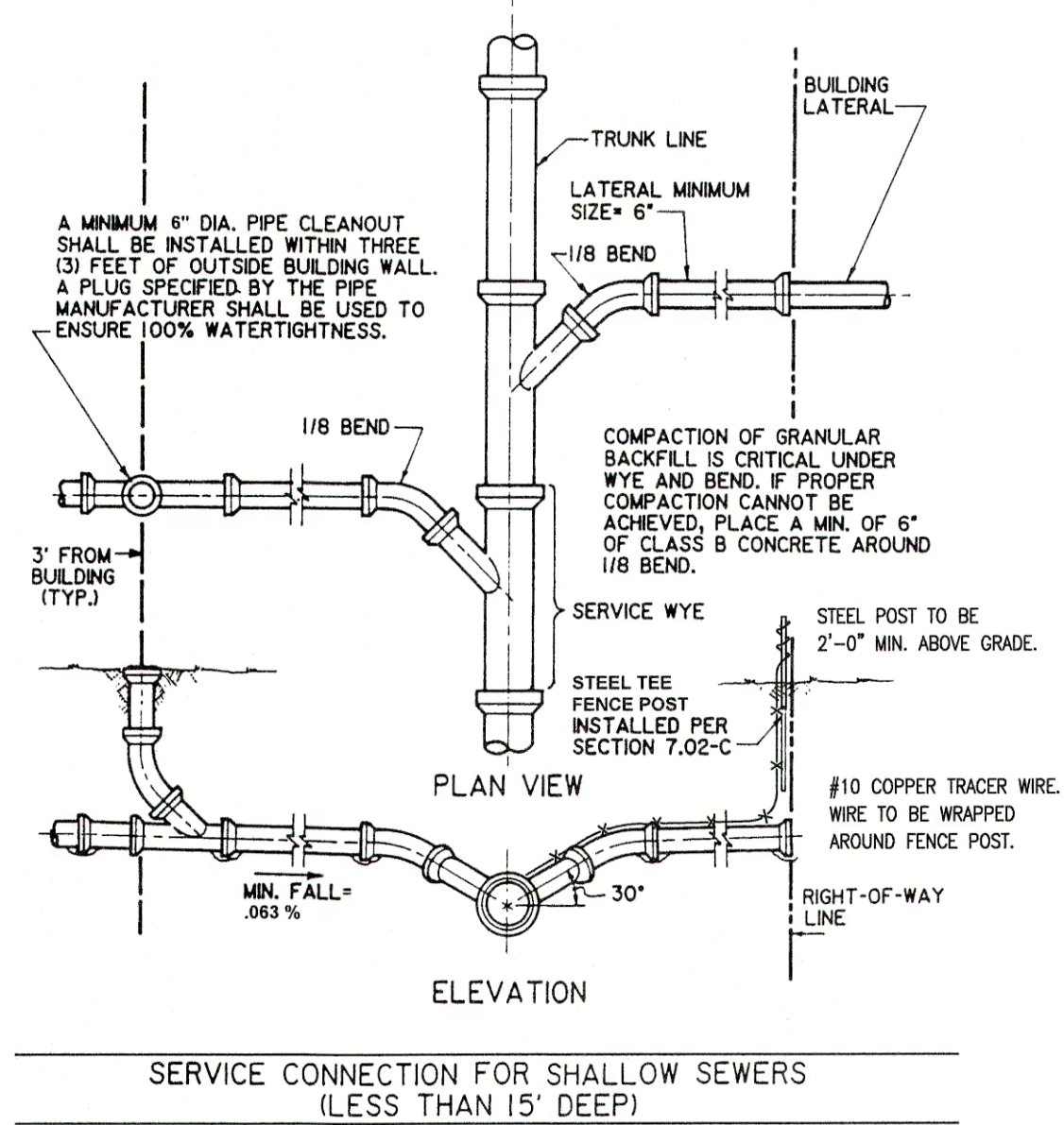


FIGURE 7

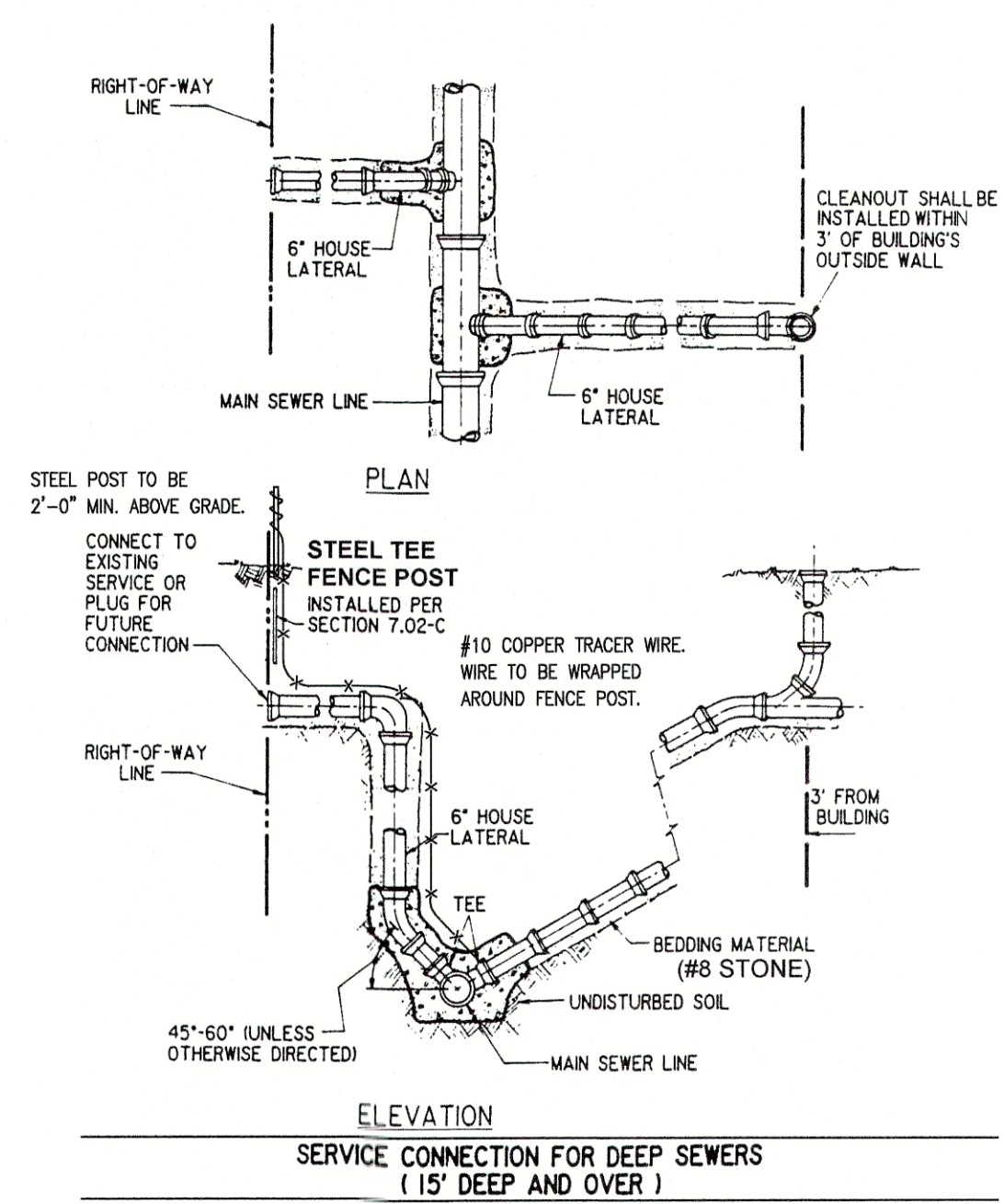
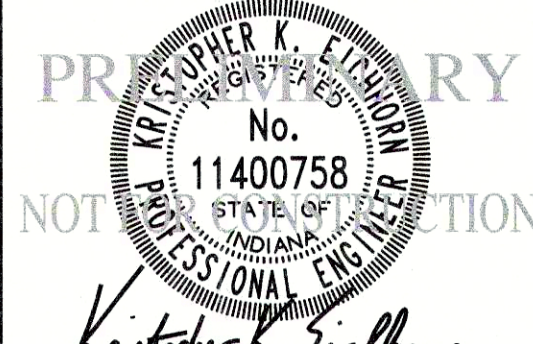


FIGURE 7-5

[illegible]

**SPRINGBROOK
SECTION 5
CONSTRUCTION DETAILS**



DRAWN BY TS/TD/GM	JOB NUMBER 2017-271-E
CHECKED BY KE	
DATE SEPTEMBER 8, 2020	
SCALE AS SHOWN	
SHEET	

C8.6

CONSTRUCTION DETAILS