

SANITARY SEWER ADDITIONAL CONNECTIONS AND SERVICE CONNECTIONS

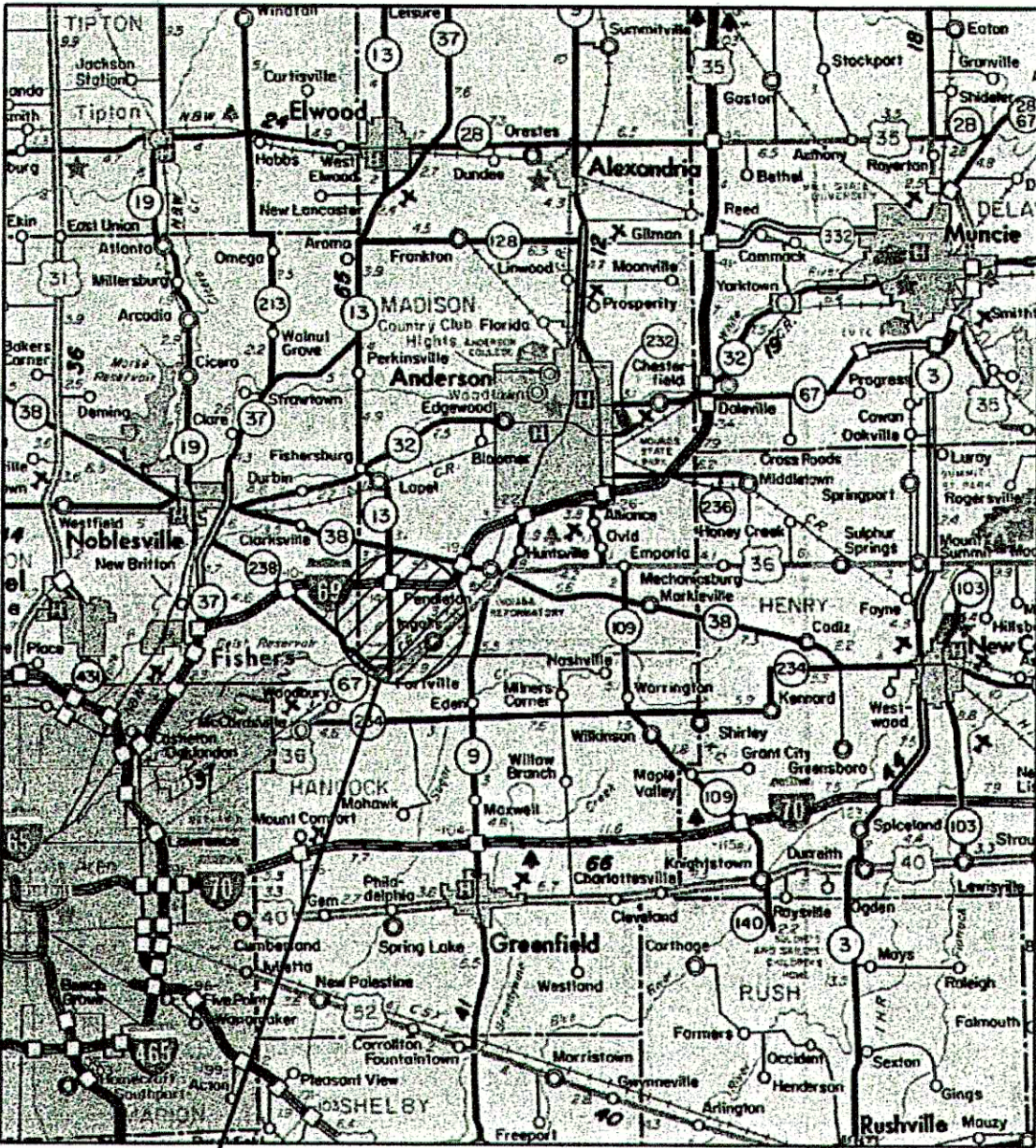
PROJECT FOR THE FALL CREEK REGIONAL WASTE DISTRICT MADISON COUNTY, IN.

IN COOPERATION WITH THE TOWN OF INGALLS

NOVEMBER 2004

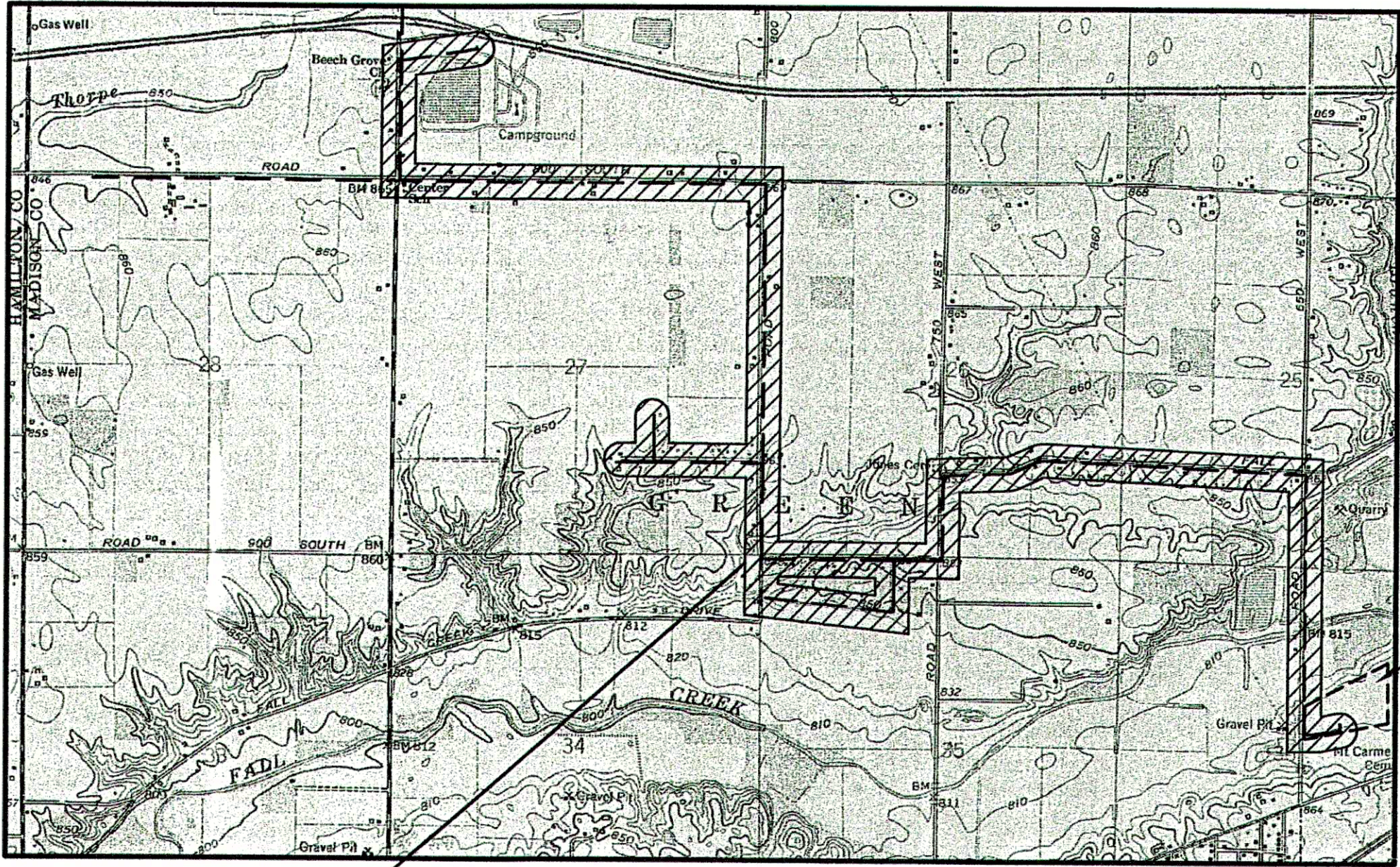
DOC GRANT #CF-04-103

AREA MAP



AREA
LOCATION

LOCATION MAP



PROJECT
LOCATION

FALL CREEK R.W.D. WASTEWATER
TREATMENT FACILITY LOCATION

RECORD DRAWING

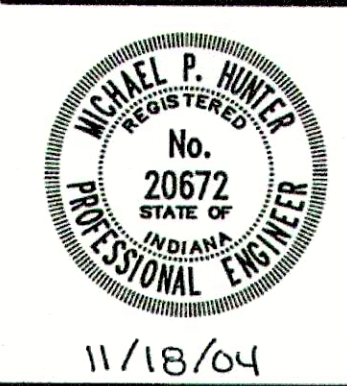
This drawing has been revised from the original contract drawings to show minor / major changes made during construction. This drawing is not warranted to be complete and accurate in all respects.

GRW Engineers, Inc.

Date: 5-18-06 By: CJF

THESE PLANS CERTIFIED BY:

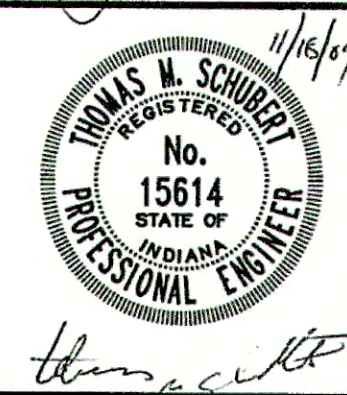
Michael P. Hunter, Professional Engineer



James W. Frazell, Professional Engineer



Thomas M. Schubert, Professional Engineer



PLANS PREPARED BY:

TRIAD
ASSOCIATES
INC.
INDIANAPOLIS, INDIANA



NOTE
ADDITIONAL RIGHT-OF-WAY OR EASEMENTS MAY
NEED TO BE ACQUIRED FOR INSTALLATION OF SEWER.



DON'T DIG BLIND
CALL BEFORE YOU DIG
TOLL FREE
1-800-382-5544
OR
1-800-428-5200

PER INDIANA STATE LAW IS-69-1991, IT IS
AGAINST THE LAW TO EXCAVATE WITHOUT
NOTIFYING THE UNDERGROUND LOCATION SERVICE
TWO (2) WORKING DAYS BEFORE COMMENCING WORK.
NOTE: CONTRACTOR TO VERIFY ALL UTILITY LOCATIONS
PRIOR TO THE START OF CONSTRUCTION