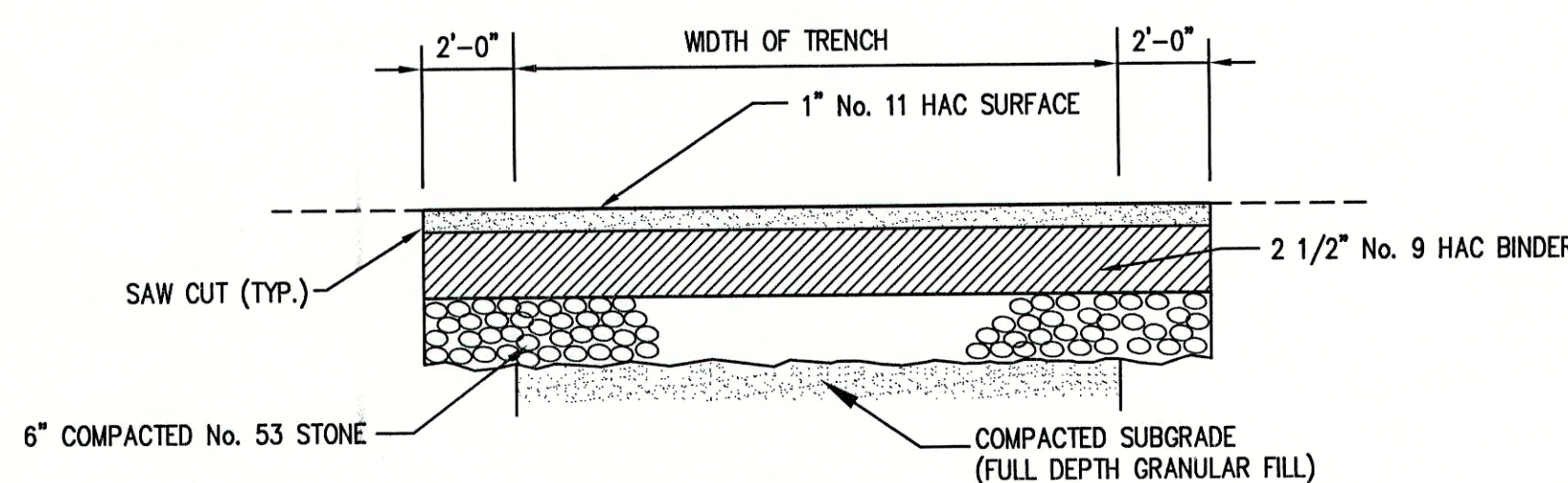
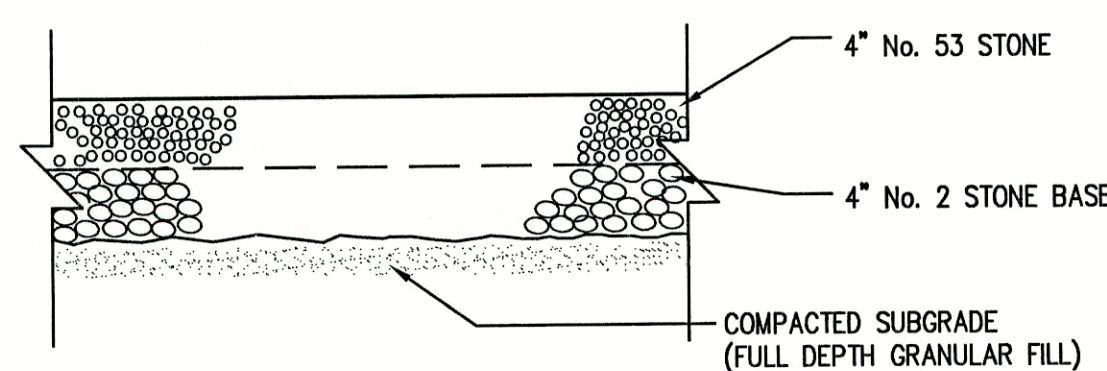


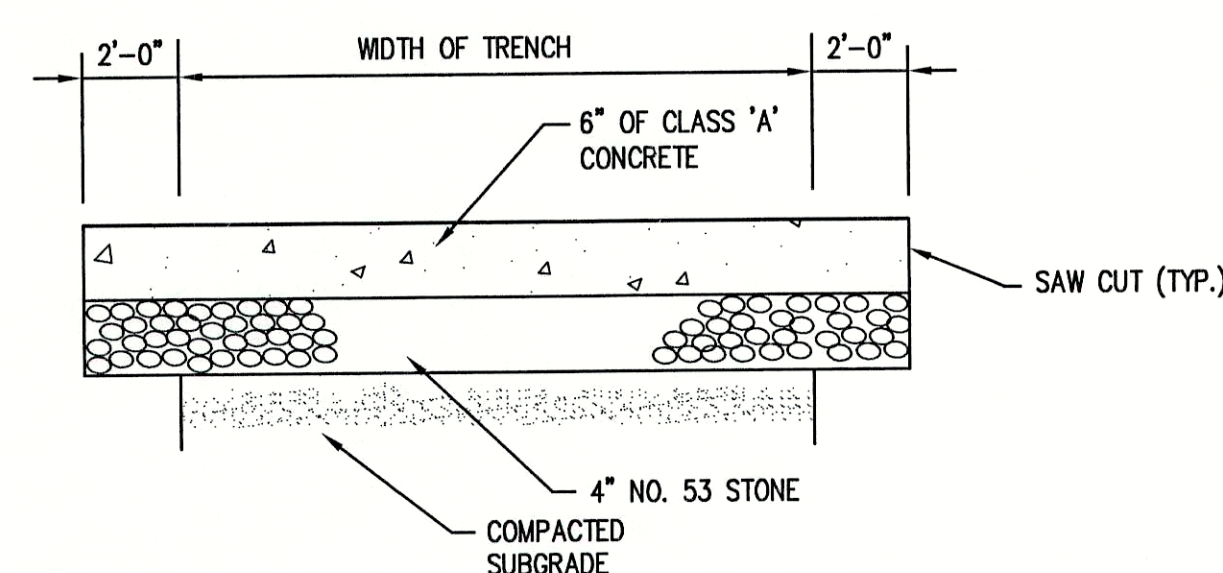
1 **BACKFILL REQUIREMENTS**  
(FOR PIPELINES WITHIN RIGHT-OF-WAY FOR IMPROVED STREETS)



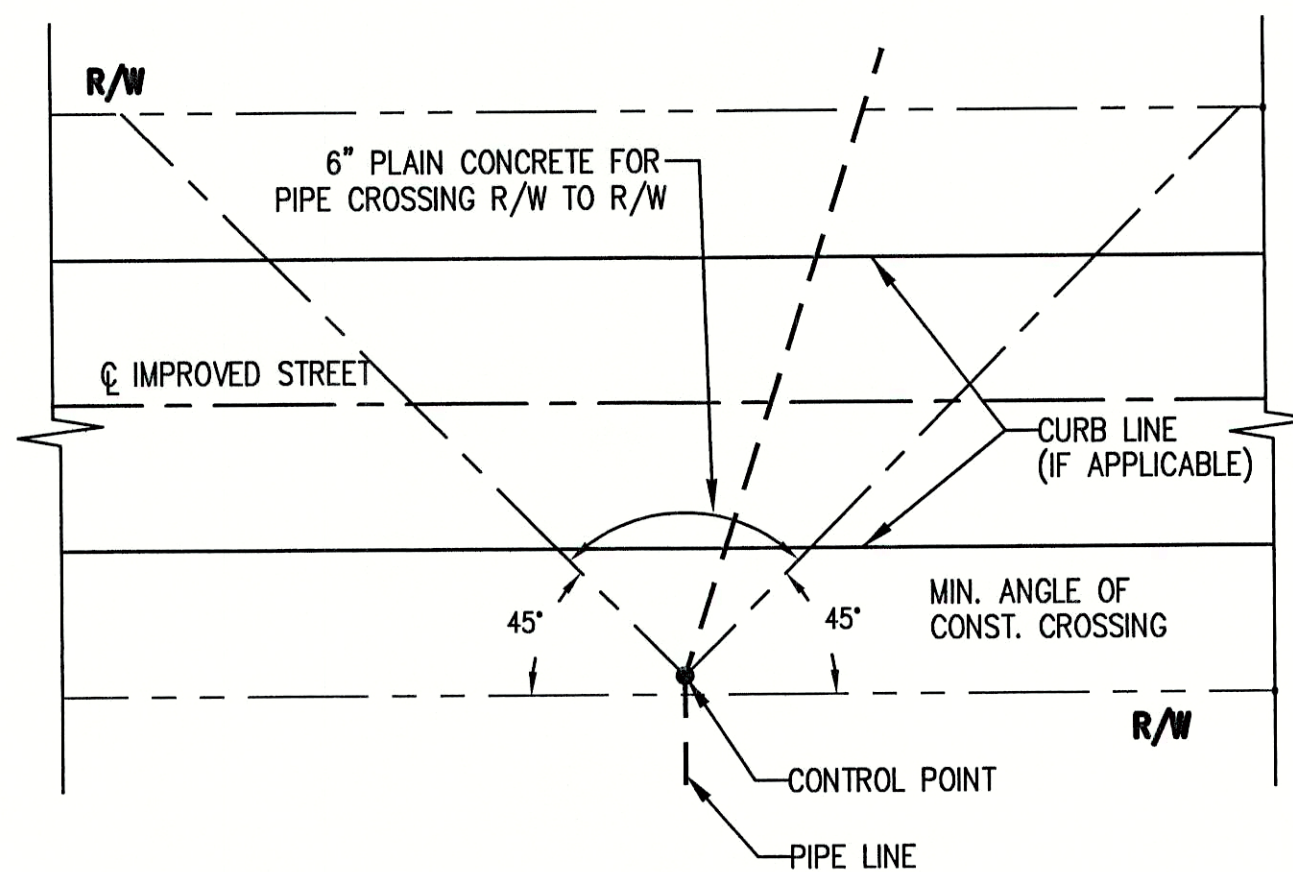
4 **ASPHALT DRIVE REPAIR DETAIL**  
SCALE: N.T.S.



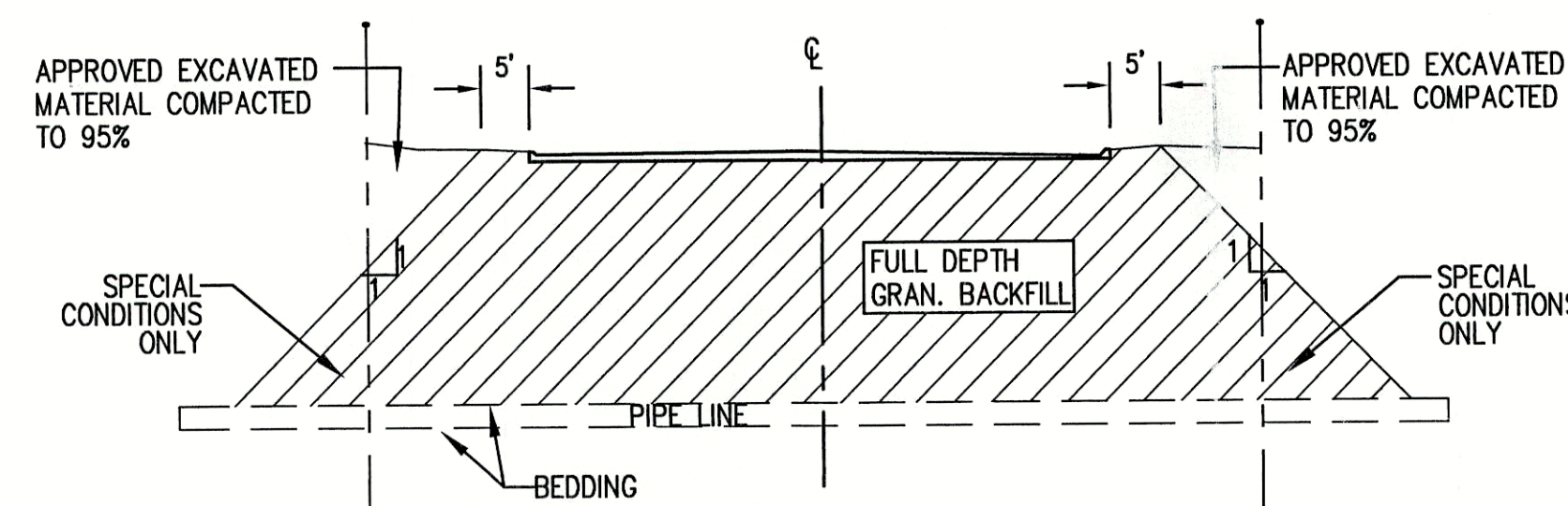
5 **STONE DRIVE REPAIR DETAIL**  
SCALE: N.T.S.



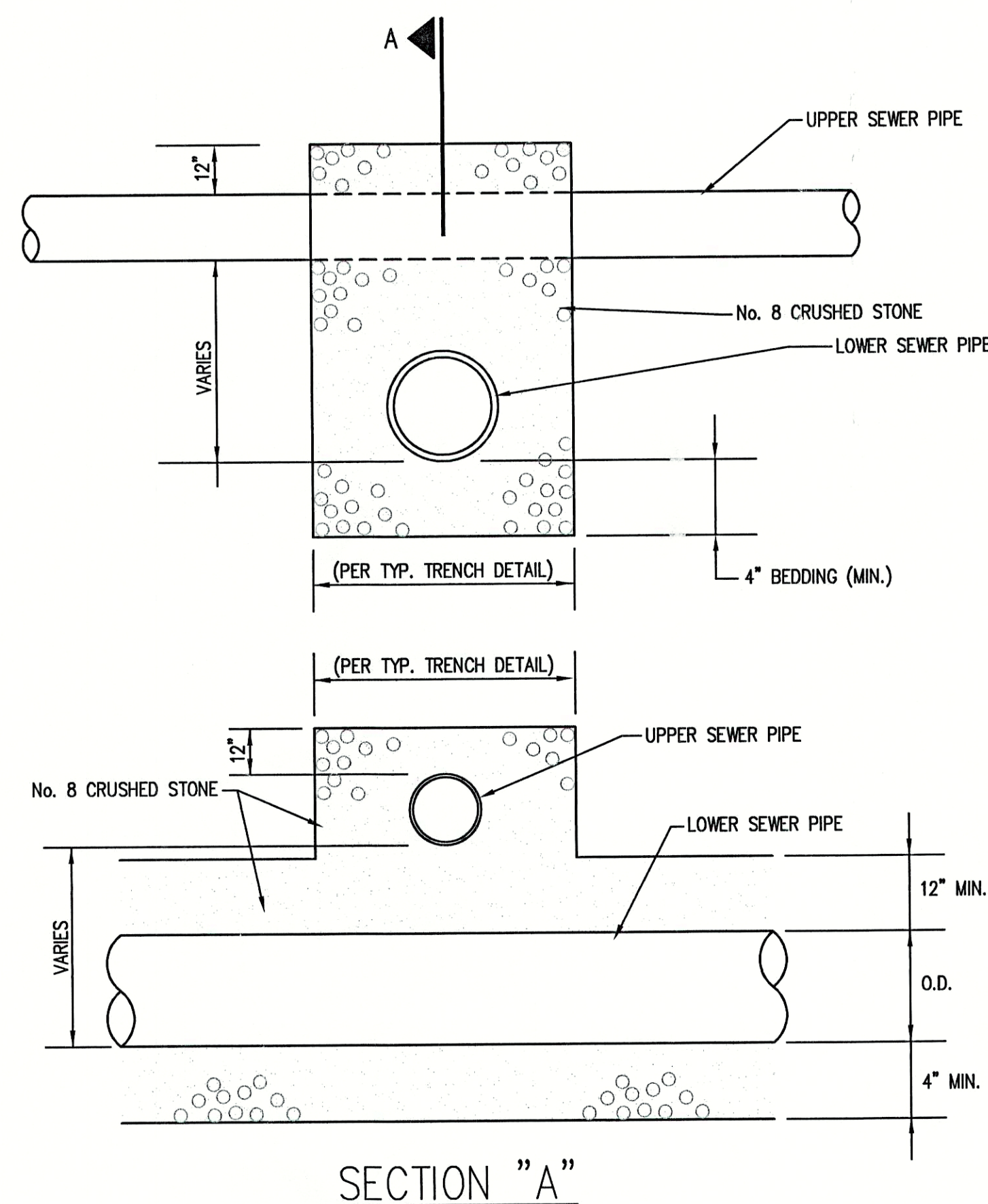
6 **CONCRETE DRIVE REPAIR DETAIL**  
SCALE: N.T.S.



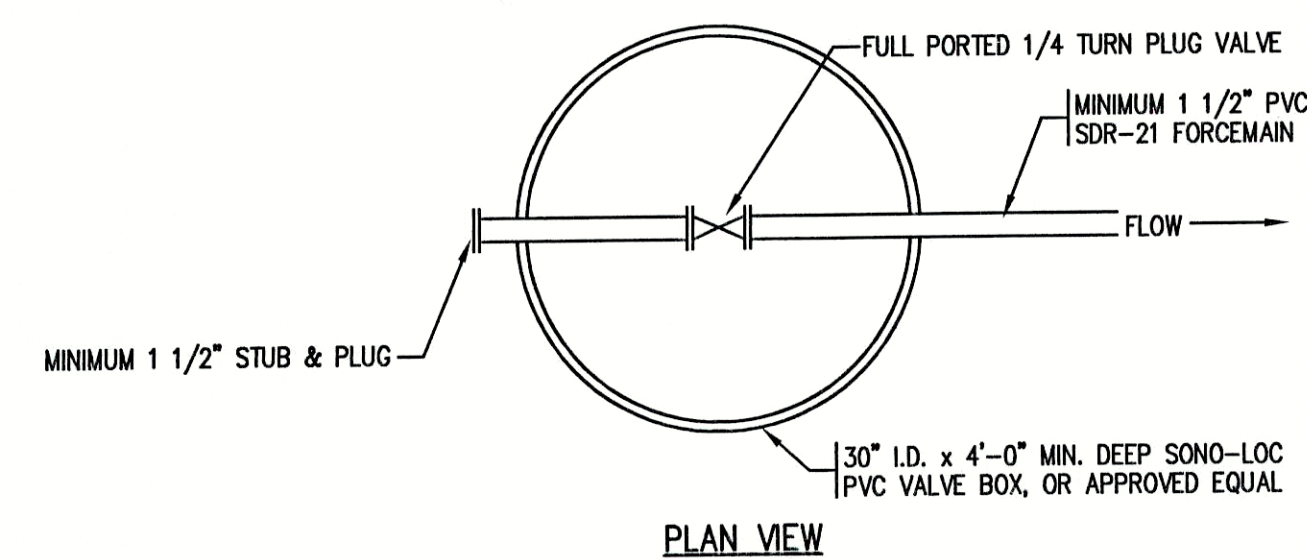
2 **BACKFILL REQUIREMENTS**  
(FOR PIPELINES CROSSING RIGHT-OF-WAY FOR IMPROVED STREETS)



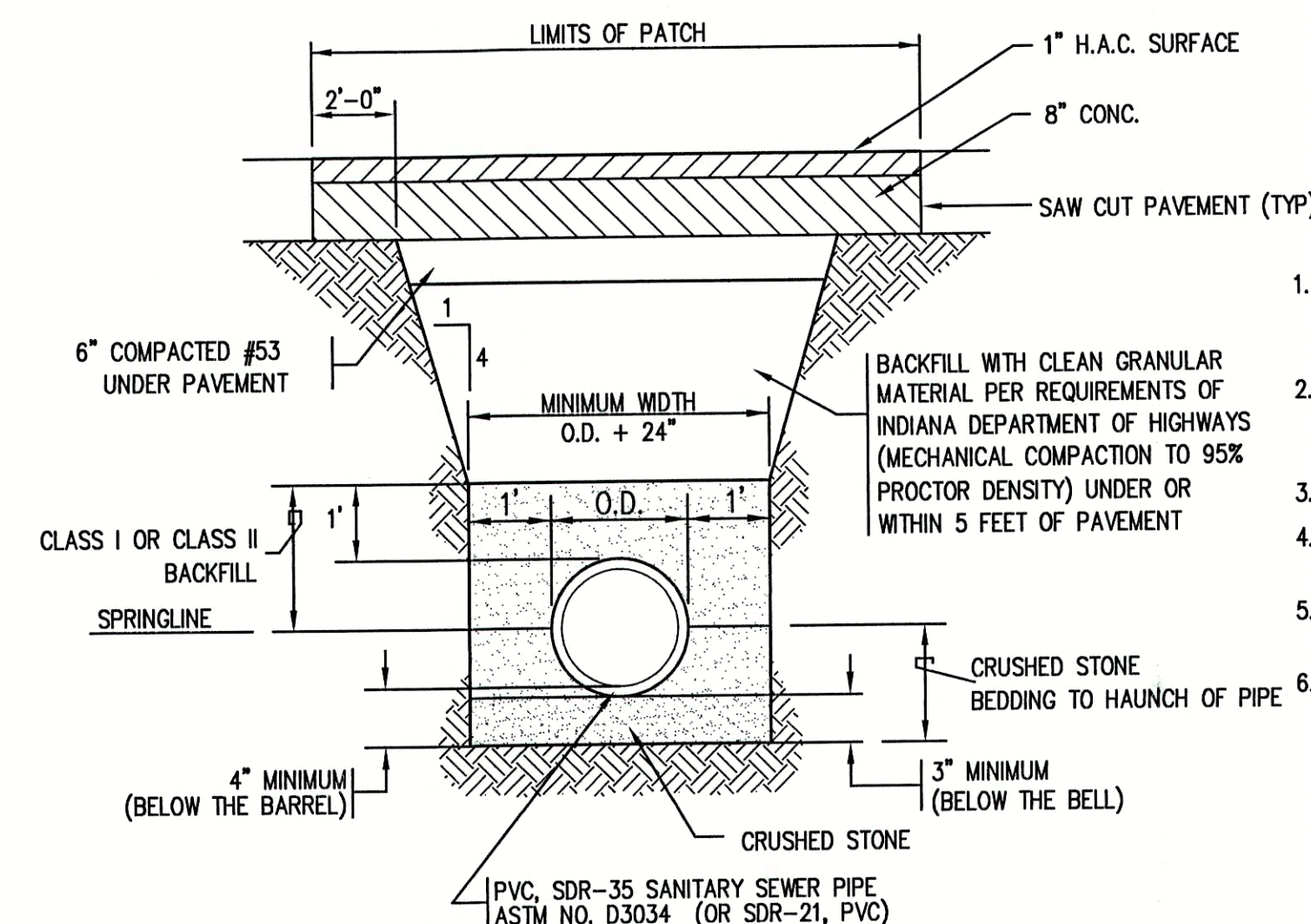
7 **STORM SEWER/SANITARY SEWER CROSSING DETAIL**  
SCALE: N.T.S.



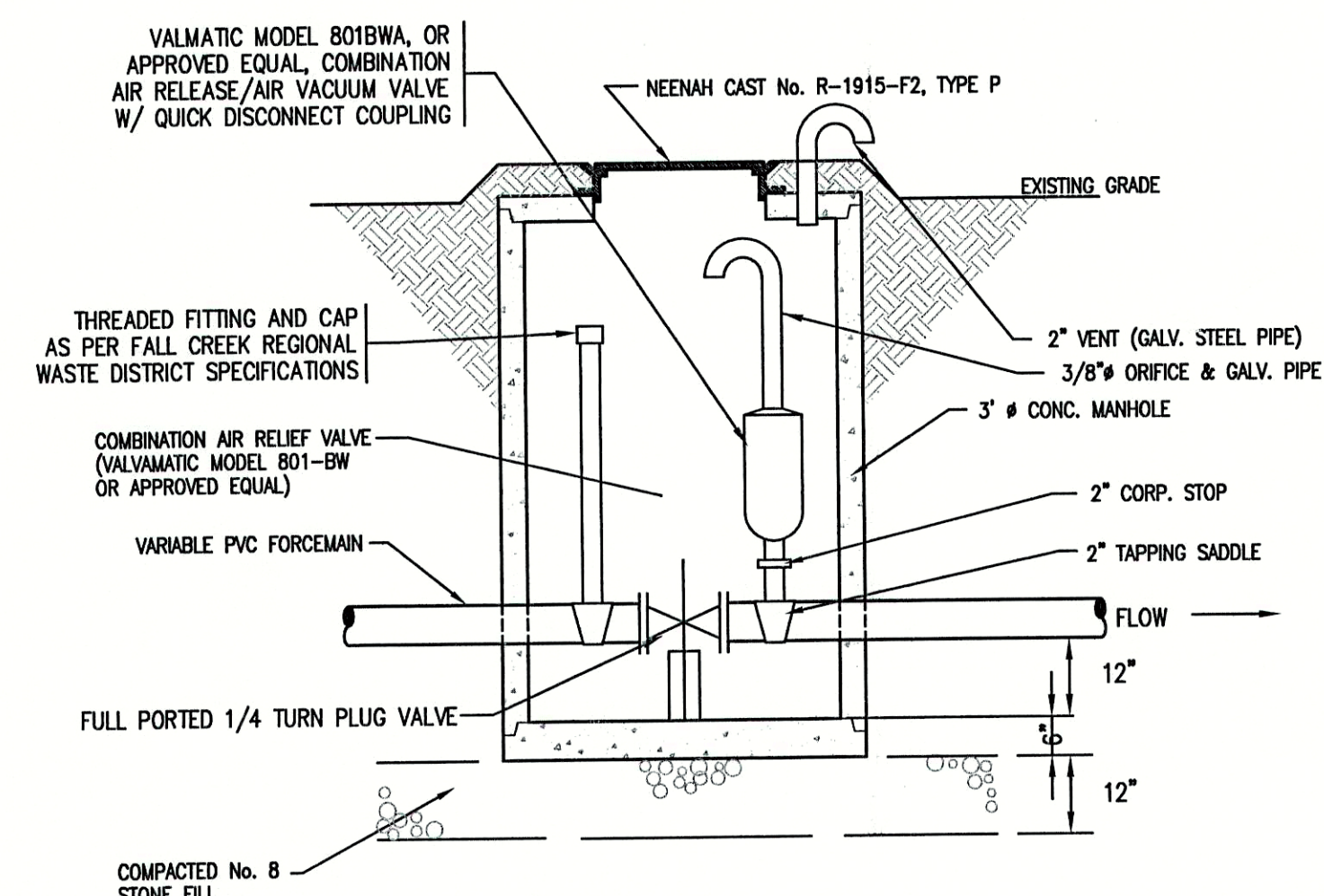
8 **VALVE VAULT w/ AIR / VAC RELIEF STRUCTURE**  
SCALE: N.T.S.



9 **STANDARD SERVICE CONNECTION VALVE VAULT**  
NOT TO SCALE

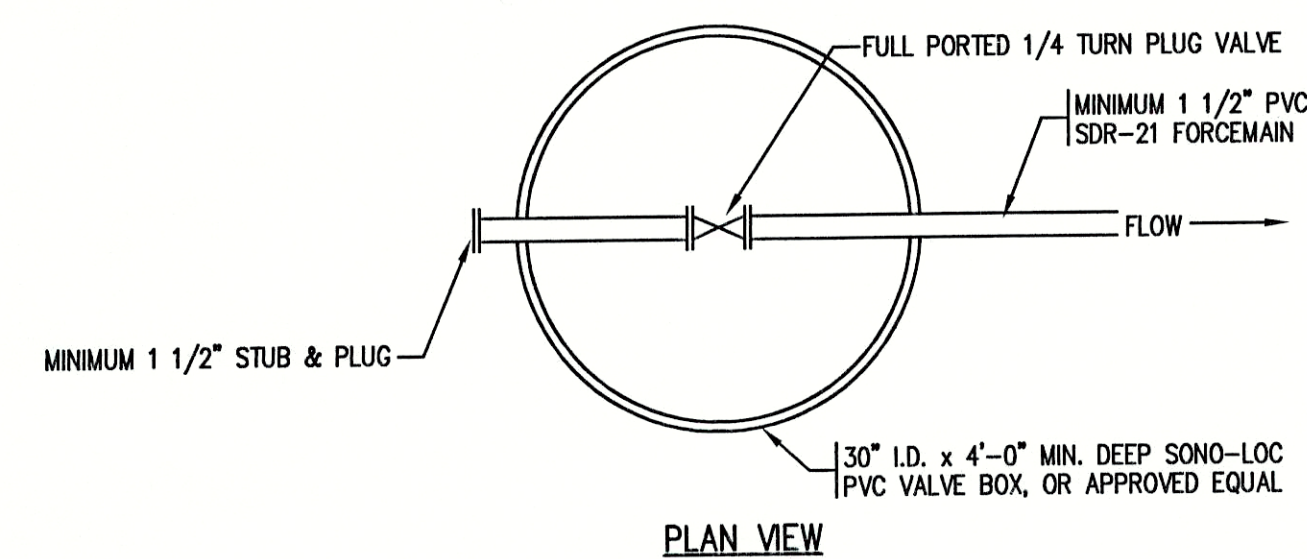


3 **TYPICAL TRENCH AND PAVEMENT PATCH DETAIL**  
SCALE: N.T.S.



CONTRACTOR SHALL PLACE VALVE UNDER OPENING FOR EASY ACCESS

8 **VALVE VAULT w/ AIR / VAC RELIEF STRUCTURE**  
SCALE: N.T.S.



9 **STANDARD SERVICE CONNECTION VALVE VAULT**  
NOT TO SCALE

#### NOTES:

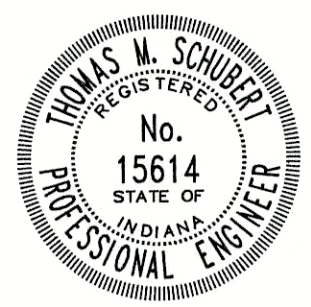
1. BITUMINOUS PAVEMENT TACK COAT SHALL BE PLACED BETWEEN THE CONCRETE SUBSURFACE AND ALONG THE SAW CUTS.
2. FOREMAIN INSTALLATION TO UTILIZE CLEAN SAND IN LIEU OF #8 STONE BEDDING AND BACKFILL TO 12" ABOVE TOP OF PIPE.
3. THIS SECTION USED FOR ALL PAY ITEMS.
4. CONTRACTOR TO MEET ALL APPLICABLE O.S.H.A. STANDARDS FOR SAFETY DURING CONSTRUCTION.
5. CONTRACTOR SHALL PROVIDE ALL SHORING, BRACING, ETC. REQUIRED TO PROTECT EXISTING STRUCTURES AND PAVEMENT.
6. USE SAND BEDDING FOR ALL PRESSURE PIPE.

CONSULTANT:

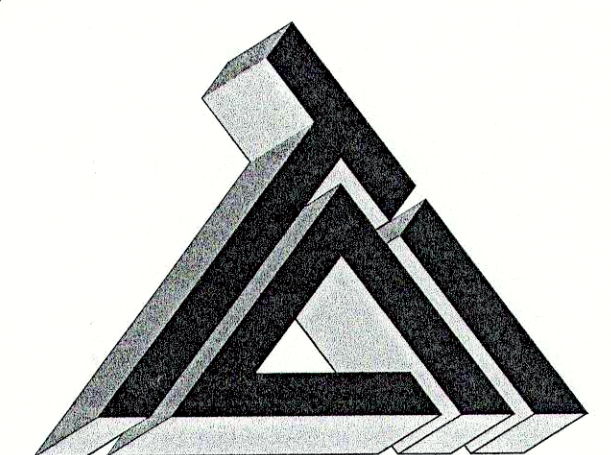
#### REVISIONS:

DATE	DESCRIPTION	BY

APPROVED BY:



THIS DRAWING AND THE IDEAS, DESIGNS AND CONCEPTS CONTAINED HEREIN ARE THE EXCLUSIVE INTELLECTUAL PROPERTY OF TRIAD ASSOCIATES, INC., AND ARE NOT TO BE USED OR REPRODUCED, IN WHOLE OR IN PART, WITHOUT THE WRITTEN CONSENT OF TRIAD ASSOCIATES, INC.



**TRIAD ASSOCIATES INC.**  
5835 LAWTON LOOP EAST DRIVE  
INDIANAPOLIS, INDIANA 46216  
PHONE: 317-377-5230 FAX: 317-377-5241

#### DESIGNED FOR:

FALL CREEK REGIONAL WASTE DISTRICT  
STATE ROAD 13 SANITARY  
SEWER FOREMAIN EXTENSION PROJECT

SHEET TITLE:

MISCELLANEOUS DETAIL SHEET

JOB NUMBER: 200202F	CHECKED BY: J.W.F.
SCALE: AS NOTED	PLOT DATE: 09/24/02
PLOT SCALE: 1 = 1	DATE: JULY 2002
DRAWN BY: B.K.Y.	DESIGNED BY: THOMAS M. SCHUBERT, P.E.
DRAWING NAME: 200202FDET1-RD.DWG	

**RECORD DRAWING**  
FEBRUARY 17, 2003

SHEET No.

**8**  
OF 9