

HOLEY MOLEY SAYS
"DON'T
DIG
BLIND"



"IT'S THE LAW"
CALL 2 WORKING DAYS BEFORE YOU DIG
1-800-382-5544
CALL TOLL FREE

PER INDIANA STATE LAW IS-69-1991,
IT IS AGAINST THE LAW TO EXCAVATE
WITHOUT NOTIFYING THE UNDERGROUND
LOCATION SERVICE TWO (2) WORKING
DAYS BEFORE COMMENCING WORK.

BENCHMARK

BM - ABOUT 3.00 MILES NORTH ALONG STATE HIGHWAY 13 FROM ITS
JUNCTION WITH STATE ROAD 236 AT FORTVILLE, ABOUT 0.15 MILE
NORTH OF A BRIDGE OVER FALL CREEK, AT THE JUNCTION OF A ROAD
LEADING WEST 50 FEET WEST OF THE CENTERLINE OF THE HIGHWAY,
31 FEET SOUTH OF THE CENTERLINE OF THE SIDE ROAD, 14.5 FEET
SOUTH OF A CONCRETE HIGHWAY RIGHT-OF-WAY MARKER POST, 1.5
FEET EAST OF THE FENCE LINE, 1.5 FEET SOUTH OF A WHITE WOODEN
WINDS POST, ABOUT LEVEL WITH THE HIGHWAY AND SET IN THE TOP
OF A CONCRETE POST PROJECTING ABOUT 8 INCHES ABOVE A
STANDARD DISK STAMPED "2535 1847"
ELEVATION = 850.48 (NGVD 1985)

TM 1 - CUT "Y" ON THE NORTHERN MOST BONNET BOLT OF A FIRE
HYDRANT ON THE EAST SIDE OF COUNTY ROAD 750 WEST, ABOUT 850
FEET SOUTH OF STATE ROAD 67.
ELEVATION = 858.075 (NGVD 29)

TM 2 - WAS NAIL 1.0 FEET UP ON THE EAST SIDE OF POWER POLE
#17-386 ON THE WEST SIDE OF STATE ROAD 67, ABOUT 1300 FEET
SOUTHWESTERLY OF COUNTY ROAD 750 WEST.
ELEVATION = 858.12 (NGVD 29)

TM 3 - WAS NAIL 1.0 FEET UP ON THE NORTH SIDE OF POWER POLE
#17-386 ON THE SOUTH SIDE OF STATE ROAD 67, ABOUT 1300 FEET
SOUTHWESTERLY OF COUNTY ROAD 750 WEST.
ELEVATION = 858.12 (NGVD 29)

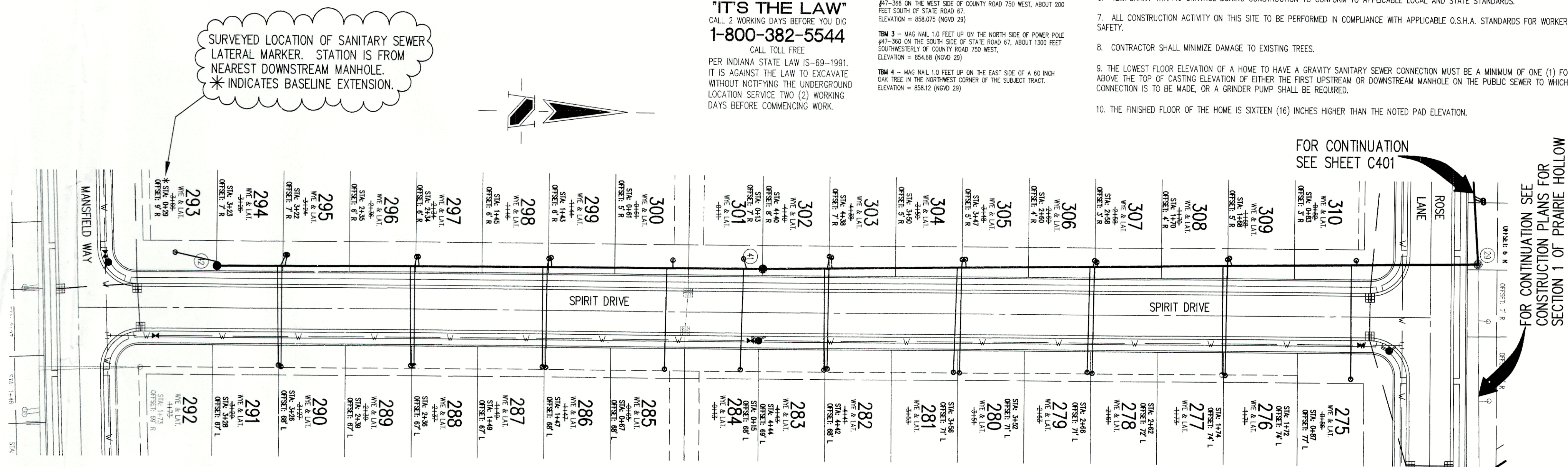
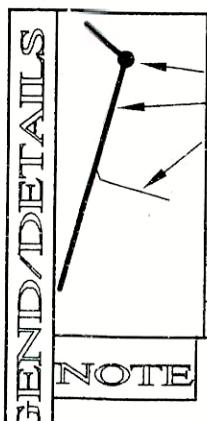
TM 4 - WAS NAIL 1.0 FEET UP ON THE EAST SIDE OF A 60 INCH
OAK TREE IN THE NORTHWEST CORNER OF THE SUBJECT TRACT.
ELEVATION = 858.12 (NGVD 29)

- GENERAL NOTES**
1. ALL WYE, LATERAL AND PROFILE STATIONS ARE FROM THE NEAREST DOWNSTREAM MANHOLE. (WH)
 2. WYES AND LATERALS TO BE 6" PIPE UNLESS OTHERWISE SPECIFIED.
 3. ALL WYE CONNECTIONS SHALL HAVE A MINIMUM OF FIVE FOOT LATERAL EXTENSION CONNECTED TO THE WYE, OR EXTEND TO THE UTILITY AND DRAINAGE EASEMENT OF THE LOT, WHICHEVER IS GREATER, BUT IN NO CASE SHOULD BE CLOSER THAN 7' TO THE PAD/BUILDING LINE. THE END OF THE LATERAL SHALL BE PLUGGED OR CAPPED, UNLESS OTHERWISE NOTED.
 4. LATERALS RUNNING TO THE OPPOSITE SIDE OF STREET SHALL EXTEND TO THE UTILITY AND DRAINAGE EASEMENT OF THE LOT, BUT IN NO CASE SHOULD BE CLOSER THAN 7' TO THE PAD/BUILDING LINE, UNLESS OTHERWISE NOTED.
 5. IT SHALL BE THE CONTRACTORS RESPONSIBILITY TO FIELD VERIFY ALL UTILITY LOCATIONS BEFORE CONSTRUCTION BEGINS.
 6. TEMPORARY TRAFFIC CONTROL DURING CONSTRUCTION TO CONFORM TO APPLICABLE LOCAL AND STATE STANDARDS.
 7. ALL CONSTRUCTION ACTIVITY ON THIS SITE TO BE PERFORMED IN COMPLIANCE WITH APPLICABLE O.S.H.A. STANDARDS FOR WORKER SAFETY.
 8. CONTRACTOR SHALL MINIMIZE DAMAGE TO EXISTING TREES.
 9. THE LOWEST FLOOR ELEVATION OF A HOME TO HAVE A GRAVITY SANITARY SEWER CONNECTION MUST BE A MINIMUM OF ONE (1) FOOT ABOVE THE TOP OF CASTING ELEVATION OF EITHER THE FIRST UPSTREAM OR DOWNSTREAM MANHOLE ON THE PUBLIC SEWER TO WHICH THE CONNECTION IS TO BE MADE, OR A GRINDER PUMP SHALL BE REQUIRED.
 10. THE FINISHED FLOOR OF THE HOME IS SIXTEEN (16) INCHES HIGHER THAN THE NOTED PAD ELEVATION.

THERE ARE NO DRINKING WATER WELLS WITHIN 100' RADIUS OF ANY GRAVITY SANITARY SEWER LINES OR MANHOLES ON THIS PROJECT.

Sheet	Number	Description
C802	1	Precast Reinforced Concrete Manhole
C802	3	Sanitary Sewer Bedding Detail
C802	4	Service Connection for Shallow Sewer

LEGEND/DETAILS

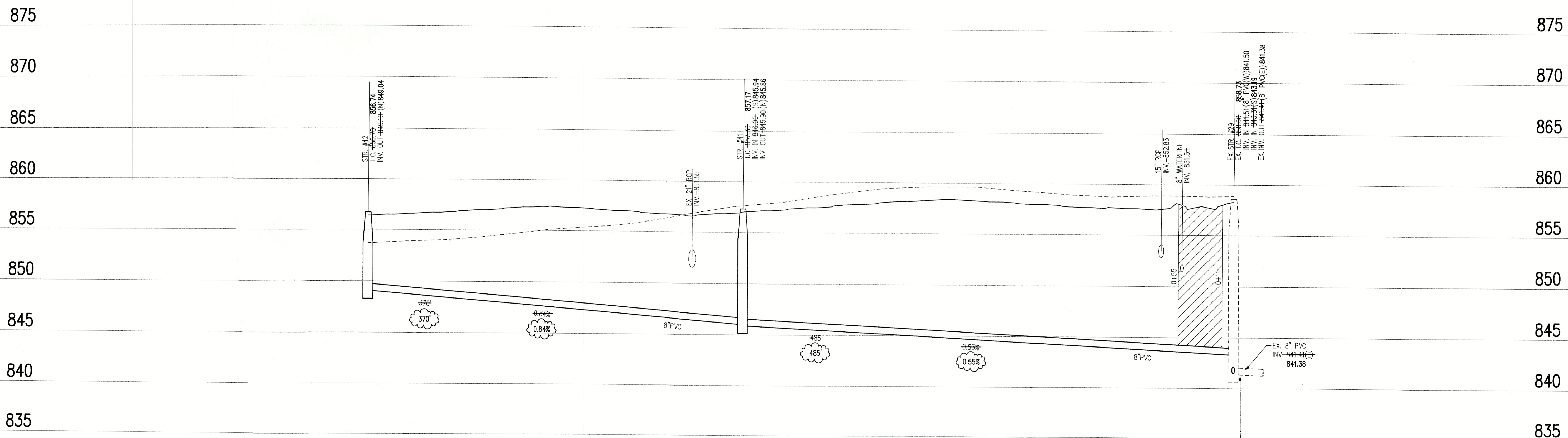


Bryan F. Catlin 4/24/06
**CERTIFICATION FOR
"RECORD DRAWING"**

NOTE:
Record drawing certification for top of casting, invert elevations, lengths of pipe, and lateral marker locations only. Slope percentage represents a calculated figure and is for general information only.

SANITARY SEWER PLAN

SCALE: 1"=50'



**SANITARY SEWER
RECORD DRAWING**

CONTRACTOR MUST FIELD VERIFY EXISTING INVERTS PRIOR TO CONSTRUCTION. IF A VARIATION EXISTS, THEN CONTACT THE ENGINEER IMMEDIATELY.

SANITARY SEWER PROFILE

LEGEND

Existing Grade	New Grade	Granular Backfill

SCALE: HORZ.: 1"=50'
VERT.: 1"=5'

REVISIONS
1. DATE: 8/20/04 - LOWEST SITE GRADING BEYOND SLOPE OF SANITARY PIPE FROM M.H.
2. T.O. 1/25/06 - UPDATED PER RECORD DRAWING INFORMATION.

DATE:
THIS DRAWING AND THE IDEAS, DESIGNS AND CONCEPTS CONTAINED HEREIN ARE THE EXCLUSIVE INTELLECTUAL PROPERTY OF THE SCHNEIDER CORPORATION, AND ARE NOT TO BE USED OR REPRODUCED, IN WHOLE OR IN PART, WITHOUT THE WRITTEN CONSENT OF THE SCHNEIDER CORPORATION.
© COPYRIGHTED BY THE SCHNEIDER CORP. (2003)


Schneider

THE SCHNEIDER CORPORATION
Historic Fort Harrison
8901 Otis Avenue
Indianapolis, IN 46216-1037
Telephone: 317.826.7100
Fax: 317.826.7300
www.schneidercorp.com

Architecture
Civil Engineering
Environmental Engineering
Geotechnical Services
GIS * LIS
Home Builder Services
Interior Design
Land Surveying
Landscape Architecture
Transportation Engineering

PRAIRIE HOLLOW
SECTION 3
INGALLS, INDIANA
C. P. MORGAN COMMUNITIES, L.P.
4670 HAVEN POINT BLVD., INDIANAPOLIS, IN. 46280

DATE: 12/05/03
PROJECT NO.: 4496.003
DRAWN BY: DMW
CHECKED BY:
SHEET TITLE: SANITARY SEWER PLAN & PROFILES
DRAWING FILES:
R:\4K\4496\003\DWG\0401-3
XREF: R:\4K\4496\003\DWG\0385
XREF: R:\4K\4496\003\DWG\0385
XREF: R:\4K\4496\003\DWG\0385
XREF: R:\4K\4496\003\DWG\0385

SHEET NO.:
C403