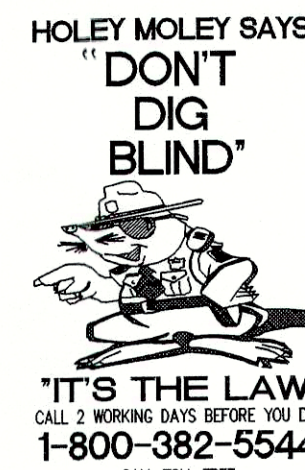


THERE ARE NO DRINKING WATER WELLS WITHIN 100' RADIUS OF ANY GRAVITY SANITARY SEWER LINES OR MANHOLES ON THIS PROJECT.

Sheet	Date	Description
C802	1	Precast Reinforced Concrete Manhole
C802	3	Sanitary Sewer Bedding Detail
C802	5	Service Connection for Deep Sewer
C802	4	Service Connection for Shallow Sewer

LEGEND/DETAILS

NOTE



BENCHMARK

BM - ABOUT 3.05 WEST NORTH ALONG STATE HIGHWAY 13 FROM ITS JUNCTION WITH STATE ROAD 238 AT FORTVILLE, ABOUT 0.55 MILE NORTH OF A BRIDGE OVER FALL CREEK, AT THE JUNCTION OF A ROAD LEADING WEST 30 FEET WEST OF THE CENTERLINE OF THE HIGHWAY, 31 FEET SOUTH OF THE CENTERLINE OF THE SIDE ROAD, 14.5 FEET SOUTH OF A CONCRETE HIGHWAY PROTECT-UP-WAY MARKER POST, 1.5 FEET EAST OF THE FENCE LINE, 1.5 FEET SOUTH OF A WHITE WOODEN WIPPOSS POST, ABOUT LEVEL WITH THE HIGHWAY AND SET IN THE TOP OF A CONCRETE POST PROJECTING ABOUT 6 INCHES, BEING A STANDARD DISC STAMPED "7035 11447" ELEVATION = 860.48 (NGVD 1929)

TM 1 - CUT "X" ON THE NORTHERN MOST BOLLT BOLT OF A FIRE HYDRANT ON THE EAST SIDE OF COUNTY ROAD 750 WEST, ABOUT 800 FEET SOUTH OF STATE ROAD 67. ELEVATION = 860.075 (NGVD 29)

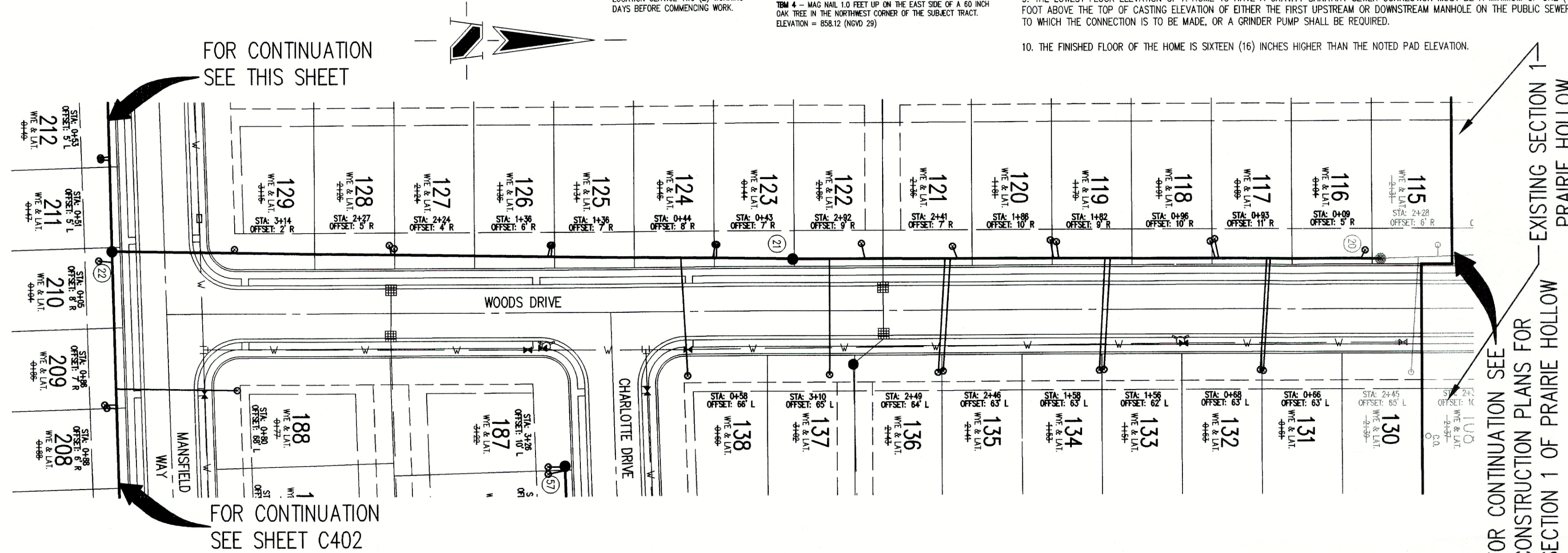
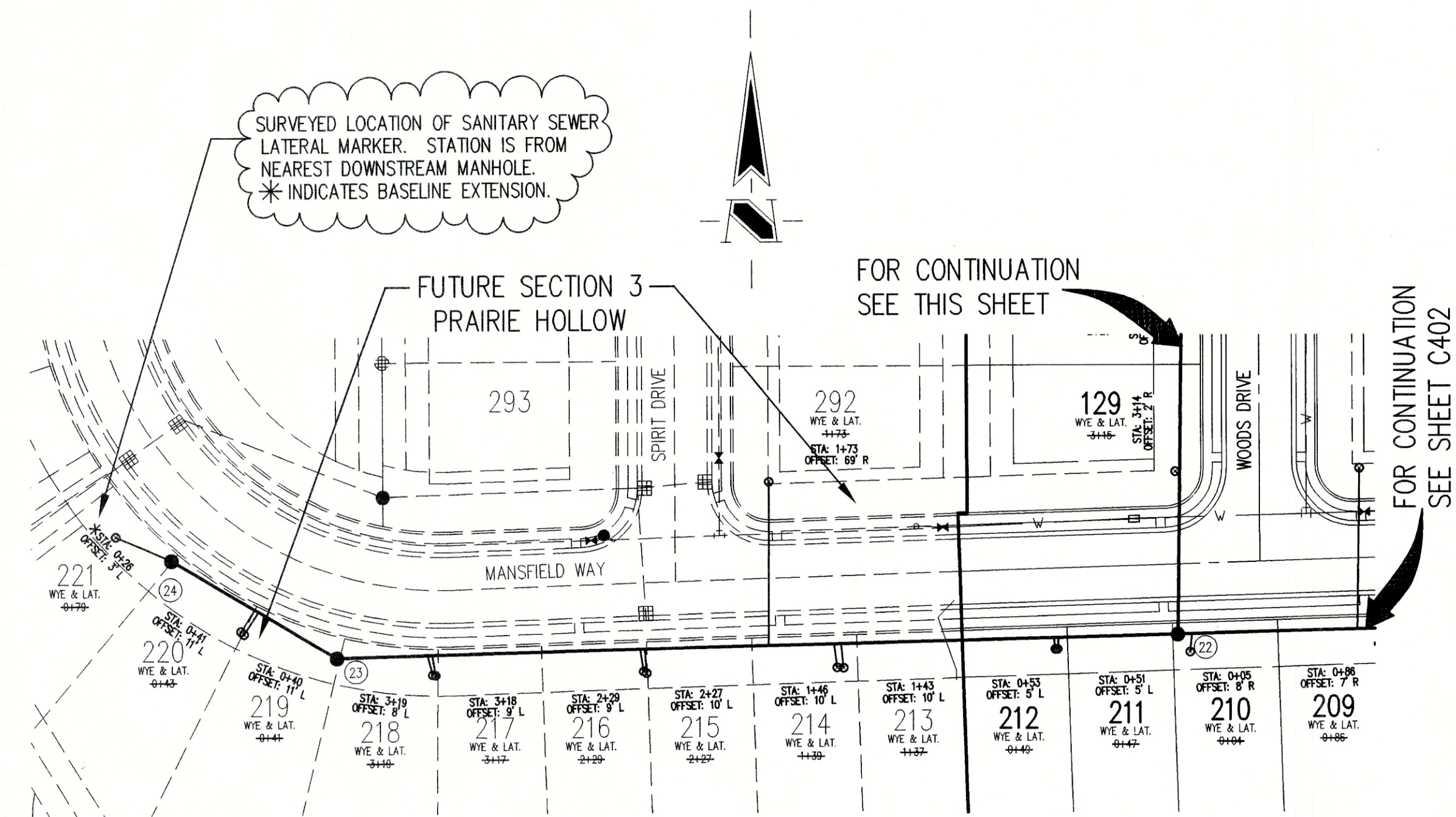
TM 2 - 4" GALV. 1.0 FEET UP ON THE EAST SIDE OF POWER POLE #41-388 ON THE WEST SIDE OF COUNTY ROAD 750 WEST, ABOUT 200 FEET SOUTH OF STATE ROAD 67. ELEVATION = 860.075 (NGVD 29)

TM 3 - 4" GALV. 1.0 FEET UP ON THE NORTH SIDE OF POWER POLE #41-388 ON THE SOUTH SIDE OF STATE ROAD 67, ABOUT 1500 FEET SOUTHWESTERLY OF COUNTY ROAD 750 WEST. ELEVATION = 864.86 (NGVD 29)

TM 4 - 4" GALV. 1.0 FEET UP ON THE EAST SIDE OF A 60 INCH OAK TREE IN THE NORTHWEST CORNER OF THE SUBJECT TRACT. ELEVATION = 858.12 (NGVD 29)

GENERAL NOTES

1. ALL WYE, LATERAL AND PROFILE STATIONS ARE FROM THE NEAREST DOWNSTREAM MANHOLE. (MH)
2. WYES AND LATERALS TO BE 6" PIPE UNLESS OTHERWISE SPECIFIED.
3. ALL WYE CONNECTIONS SHALL HAVE A MINIMUM OF FIVE FOOT LATERAL EXTENSION CONNECTED TO THE WYE, OR EXTEND TO THE UTILITY AND DRAINAGE EASEMENT OF THE LOT, WHICHEVER IS GREATER, BUT IN NO CASE SHOULD BE CLOSER THAN 7' TO THE PAD/BUILDING LINE. THE END OF THE LATERAL SHALL BE PLUGGED OR CAPPED, UNLESS OTHERWISE NOTED.
4. LATERALS RUNNING TO THE OPPOSITE SIDE OF STREET SHALL EXTEND TO THE UTILITY AND DRAINAGE EASEMENT OF THE LOT, BUT IN NO CASE SHOULD BE CLOSER THAN 7' TO THE PAD/BUILDING LINE, UNLESS OTHERWISE NOTED.
5. IT SHALL BE THE CONTRACTORS RESPONSIBILITY TO FIELD VERIFY ALL UTILITY LOCATIONS BEFORE CONSTRUCTION BEGINS.
6. TEMPORARY TRAFFIC CONTROL DURING CONSTRUCTION TO CONFORM TO APPLICABLE LOCAL AND STATE STANDARDS.
7. ALL CONSTRUCTION ACTIVITY ON THIS SITE TO BE PERFORMED IN COMPLIANCE WITH APPLICABLE O.S.H.A. STANDARDS FOR WORKER SAFETY.
8. CONTRACTOR SHALL MINIMIZE DAMAGE TO EXISTING TREES.
9. THE LOWEST FLOOR ELEVATION OF A HOME TO HAVE A GRAVITY SANITARY SEWER CONNECTION MUST BE A MINIMUM OF ONE (1) FOOT ABOVE THE TOP OF CASTING ELEVATION OF EITHER THE FIRST UPSTREAM OR DOWNSTREAM MANHOLE ON THE PUBLIC SEWER TO WHICH THE CONNECTION IS TO BE MADE, OR A GRINDER PUMP SHALL BE REQUIRED.
10. THE FINISHED FLOOR OF THE HOME IS SIXTEEN (16) INCHES HIGHER THAN THE NOTED PAD ELEVATION.



SANITARY SEWER PLAN

SCALE: 1"=50'

