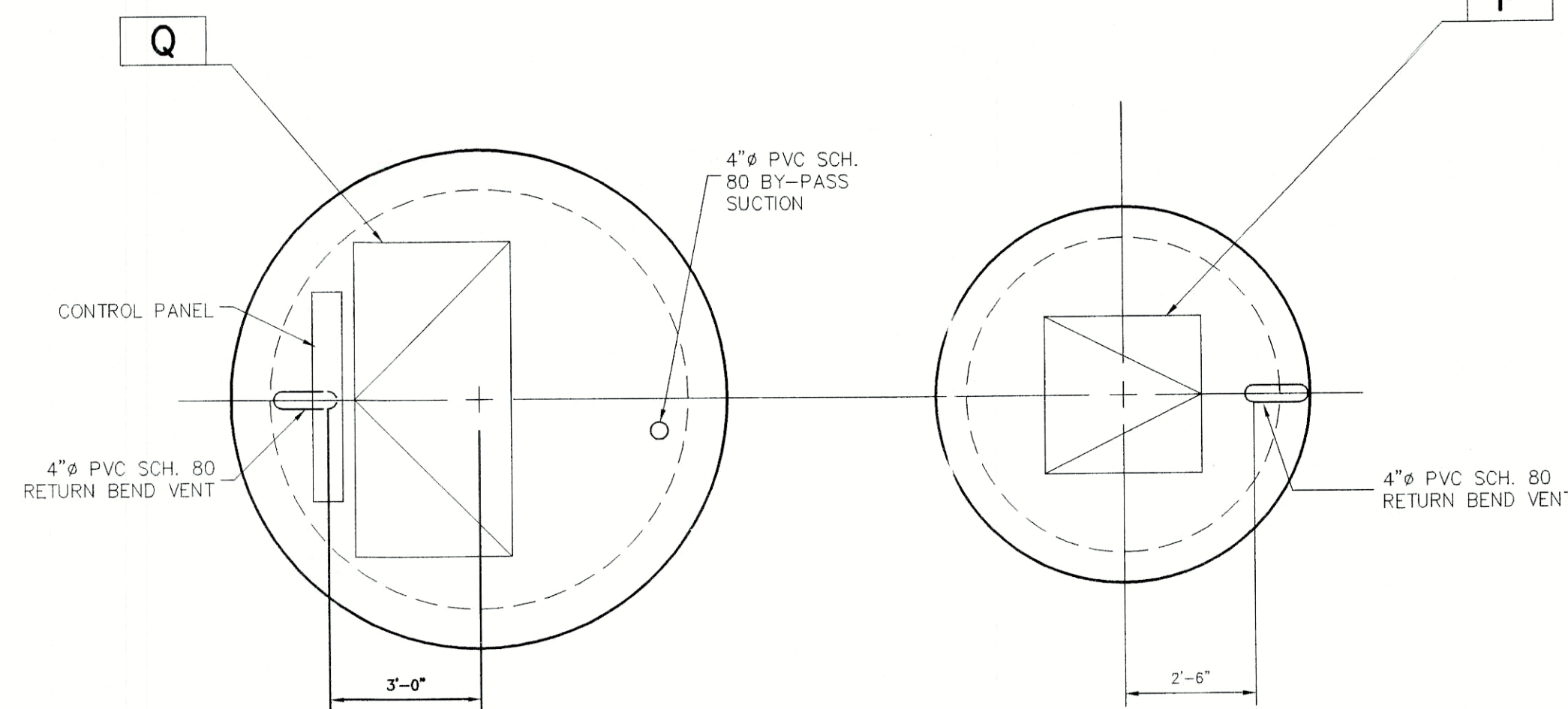


PLAN SECTION 3  
SCALE: NONE  
C502



TOP SLAB PLAN  
SCALE: NONE



DESCRIPTION	SYMBOL		
PUMP MODEL NUMBER		S40	HYDRAMATIC
PUMP CAPACITY - GPM EACH (VARIABLE)		321	
TOTAL DYNAMIC HEAD - FT.		109	
PUMP DISCHARGE SIZE Ø		4"	
MOTOR H.P.		25	
MOTOR RPM		1750	
WET WELL DIAMETER	A	10'	
DISCHARGE PIPE DIAMETER	B	6"	
FORCE MAIN DIAMETER	C	6"	
GRAVITY INFLUENT PIPE DIAMETER	D	8"	
GRAVITY INFLUENT INV. EL. - FT.	E	834.05	
WET WELL TOP OF STRUCTURE EL.	F	855.90	
WET WELL FLOOR EL.	G	827.50	
HIGH WATER ALARM EL. LEVEL TRANSDUCER	H	832.00	
LAG PUMP START EL. LEVEL TRANSDUCER	I	831.00	
LEAD PUMP START EL. LEVEL TRANSDUCER	J	830.00	
PUMPS OFF EL. LEVEL TRANSDUCER	K	829.00	
BASE SLAB THICKNESS	L	12"	
VALVE PIT DIAMETER	M	6"	
VALVE PIT TOP OF STRUCTURE EL.	N	855.90	
VALVE PIT FLOOR EL.	O	848.20	
VALVE PIT HATCH SIZE (W X L)	P	36" x 36"	
WET WELL HATCH SIZE (W X L)	Q	SEE TOWN STANDARDS	
VALVE PIT PLUG VALVE	R	6"	
CHECK VALVE	S	6"	
BYPASS PUMPING PLUG VALVE	T	6"	
DISTANCE BETWEEN PUMPS	U	BY PUMP MANUFACTURER	
DIAMETER OF GROUT CIRCLE	V	BY PUMP MANUFACTURER	
DISTANCE BETWEEN W.W. & V.P.	W	5'	
PUMP CENTERLINE SPACING	X	BY PUMP MANUFACTURER	
DISCHARGE ELBOW SIZE	Z	4" x 6"	

### BENCHMARK

BM - ABOUT 5.05 MILES NORTH ALONG STATE HIGHWAY 15 FROM ITS JUNCTION WITH STATE ROAD 250 AT FORTVILLE, ABOUT 0.55 MILES NORTH OF A BRIDGE OVER FALL CREEK, AT THE JUNCTION OF A ROAD LEADING WEST 30 FEET WEST OF THE CENTERLINE OF THE HIGHWAY 31 FEET SOUTH OF THE CENTERLINE OF THE SIDE ROAD, 14.5 FEET SOUTH OF A CONCRETE HIGHWAY RIGHT-OF-WAY MARKER POST, 1.5 FEET EAST OF THE FENCE LINE, 1.5 FEET SOUTH OF A WHITE WOODEN WITNESS POST, ABOUT LEVEL WITH THE HIGHWAY AND SET IN THE TOP OF A CONCRETE POST PROJECTING SOUTH 6 INCHES, BEING A STANDARD DISK STAMPED "1026 1947" ELEVATION = 860.40 (NOV 2005)

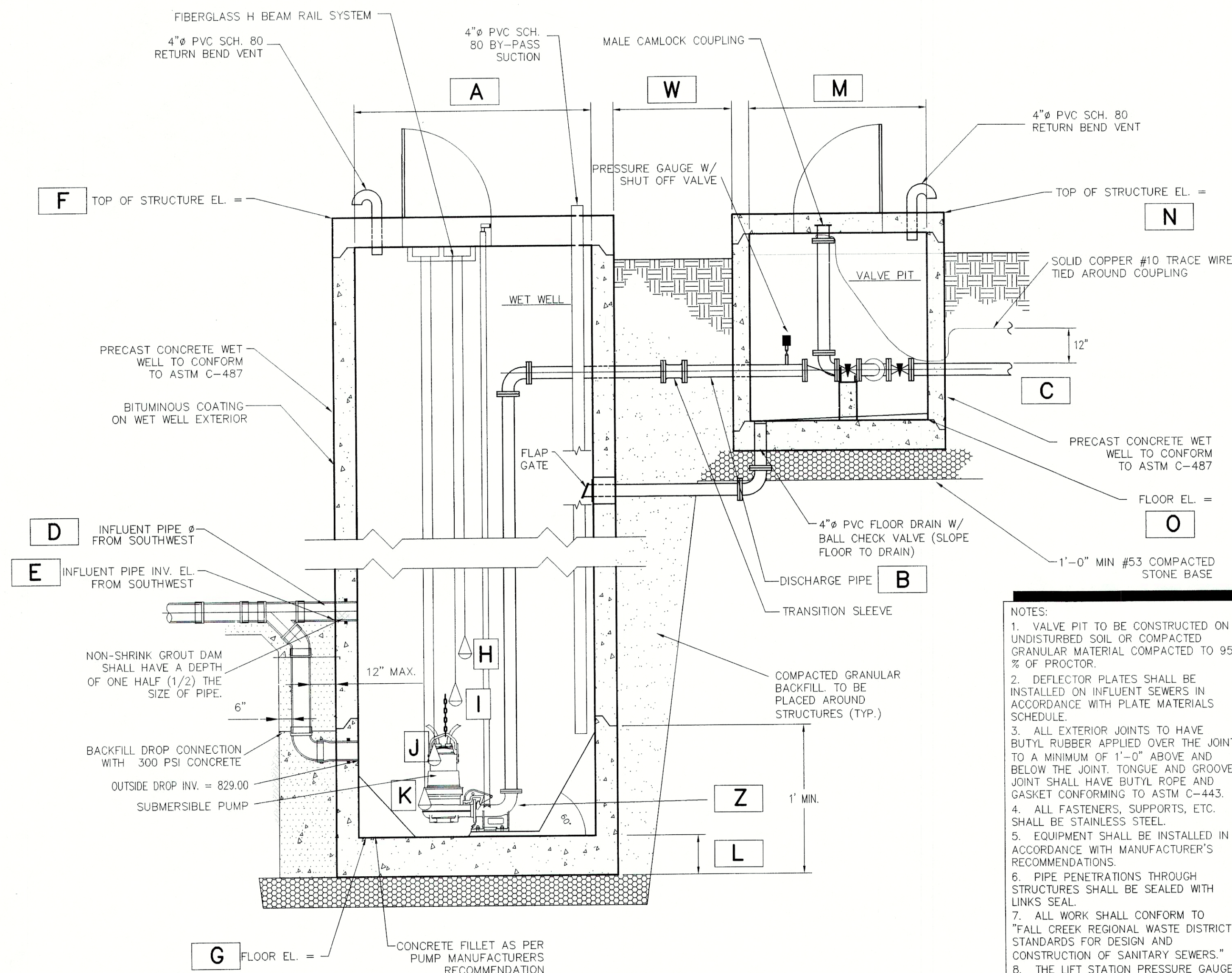
TM 1 - CUT "T" ON THE NORTHWEST CORNER BOLT OF A FIRE HYDRANT ON THE EAST SIDE OF COUNTY ROAD 750 WEST, ABOUT 850 FEET NORTH OF COUNTY ROAD 1100 NORTH ELEVATION = 860.75 (NOV 20)

TM 2 - MAG NAIL 1.0 FEET UP ON THE EAST SIDE OF POWER POLE #47-306 ON THE WEST SIDE OF COUNTY ROAD 750 WEST, ABOUT 200 FEET SOUTH OF STATE ROAD 67 ELEVATION = 858.075 (NOV 20)

TM 3 - MAG NAIL 1.0 FEET UP ON THE NORTH SIDE OF POWER POLE #47-300 ON THE SOUTH SIDE OF STATE ROAD 67, ABOUT 1300 FEET SOUTHWESTERLY OF COUNTY ROAD 750 WEST ELEVATION = 854.68 (NOV 20)

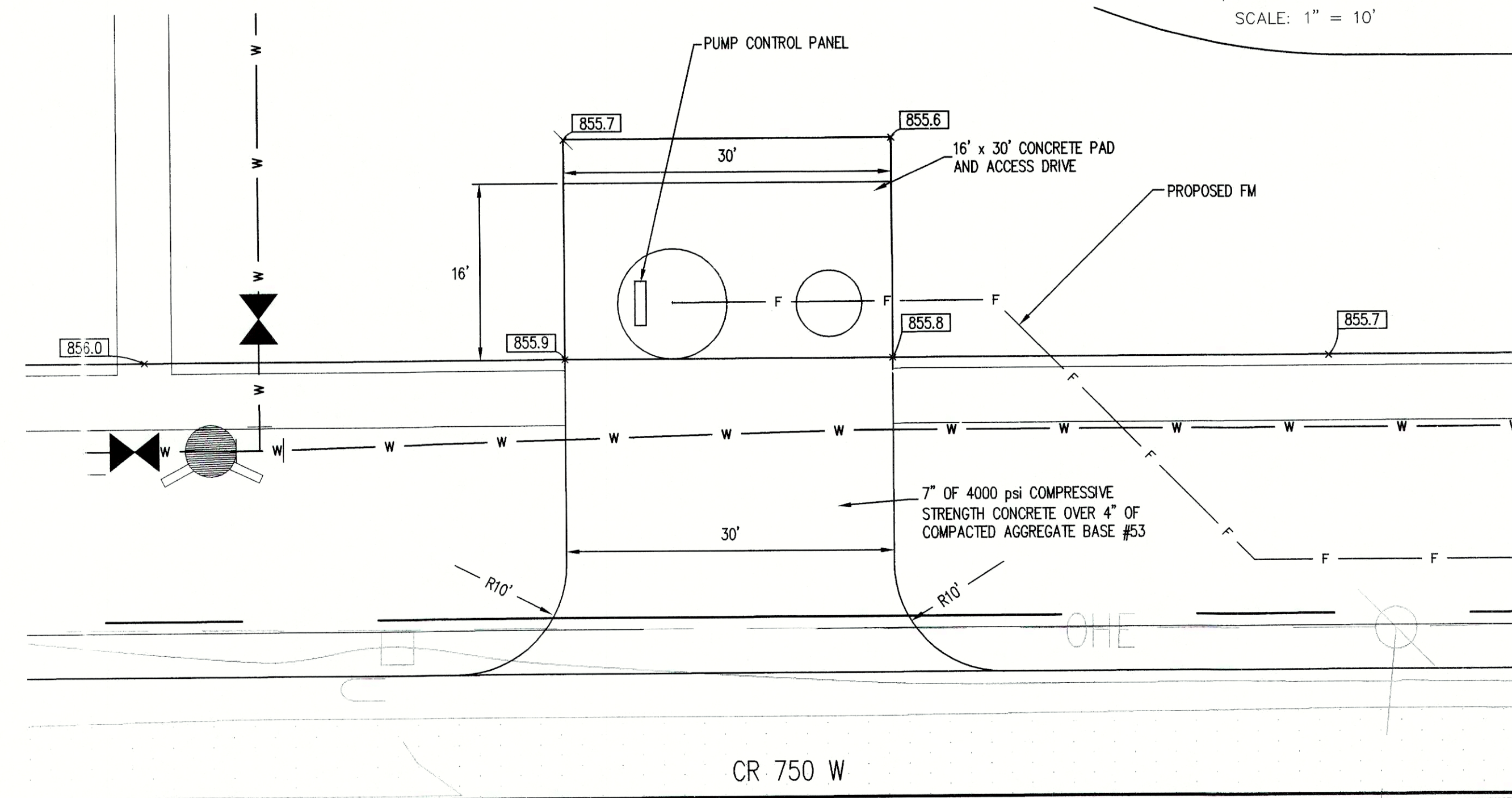
TM 4 - MAG NAIL 1.0 FEET UP ON THE EAST SIDE OF A 60 INCH OAK TREE IN THE NORTHWEST CORNER OF THE SUBJECT TRACT ELEVATION = 858.12 (NOV 20)

NOTE:  
VFD'S SHALL BE SAFTRONICS, TOSHIBA, OR EQUAL MODEL TO BE RECOMMENDED BY MANUFACTURER.



ILLUSTRATIVE SECTION 2  
SCALE: NONE  
C502

- NOTES:
1. VALVE PIT TO BE CONSTRUCTED ON UNDISTURBED SOIL OR COMPACTED GRANULAR MATERIAL COMPACTED TO 95 % OF PROCTOR.
  2. DEFLECTOR PLATES SHALL BE INSTALLED ON INFLUENT SEWERS IN ACCORDANCE WITH PLATE MATERIALS SCHEDULE.
  3. ALL EXTERIOR JOINTS TO HAVE BUTYL RUBBER APPLIED OVER THE JOINT TO A MINIMUM OF 1"-0" ABOVE AND BELOW THE JOINT. TONGUE AND GROOVE JOINT SHALL HAVE BUTYL ROPE AND GASKET CONFORMING TO ASTM C-443.
  4. ALL FASTENERS, SUPPORTS, ETC. SHALL BE STAINLESS STEEL.
  5. EQUIPMENT SHALL BE INSTALLED IN ACCORDANCE WITH MANUFACTURER'S RECOMMENDATIONS.
  6. PIPE PENETRATIONS THROUGH STRUCTURES SHALL BE SEALED WITH LINKS SEAL.
  7. ALL WORK SHALL CONFORM TO "FALL CREEK REGIONAL WASTE DISTRICT STANDARDS FOR DESIGN AND CONSTRUCTION OF SANITARY SEWERS."
  8. THE LIFT STATION PRESSURE GAUGE WITH VALVE AND FITTINGS SHALL BE STAINLESS STEEL OR BRASS.
  9. THE CONCRETE LIFT STATION BASE SHALL BE MANUFACTURED WITH THE BASE AND THE FIRST ONE (1) FOOT MINIMUM OF BARREL ABOVE THE BASE POURED MONOLITHICALLY.



SITE PLAN 1  
SCALE: 1" = 10'  
C502

REVISIONS:  
08-07-03 PER ADDED INTERIOR DROP IN WET WELL  
08-08-03 PER ADDED INTERIOR DROP IN WET WELL  
08-09-03 PER ADDED INTERIOR DROP IN WET WELL  
08-10-03 PER ADDED INTERIOR DROP IN WET WELL  
08-11-03 PER ADDED INTERIOR DROP IN WET WELL  
08-12-03 PER ADDED INTERIOR DROP IN WET WELL  
08-13-03 PER ADDED INTERIOR DROP IN WET WELL  
08-14-03 PER ADDED INTERIOR DROP IN WET WELL  
08-15-03 PER ADDED INTERIOR DROP IN WET WELL  
08-16-03 PER ADDED INTERIOR DROP IN WET WELL  
08-17-03 PER ADDED INTERIOR DROP IN WET WELL  
08-18-03 PER ADDED INTERIOR DROP IN WET WELL  
08-19-03 PER ADDED INTERIOR DROP IN WET WELL  
08-20-03 PER ADDED INTERIOR DROP IN WET WELL  
08-21-03 PER ADDED INTERIOR DROP IN WET WELL  
08-22-03 PER ADDED INTERIOR DROP IN WET WELL  
08-23-03 PER ADDED INTERIOR DROP IN WET WELL  
08-24-03 PER ADDED INTERIOR DROP IN WET WELL  
08-25-03 PER ADDED INTERIOR DROP IN WET WELL  
08-26-03 PER ADDED INTERIOR DROP IN WET WELL  
08-27-03 PER ADDED INTERIOR DROP IN WET WELL  
08-28-03 PER ADDED INTERIOR DROP IN WET WELL  
08-29-03 PER ADDED INTERIOR DROP IN WET WELL  
08-30-03 PER ADDED INTERIOR DROP IN WET WELL  
08-31-03 PER ADDED INTERIOR DROP IN WET WELL  
09-01-03 PER ADDED INTERIOR DROP IN WET WELL  
09-02-03 PER ADDED INTERIOR DROP IN WET WELL  
09-03-03 PER ADDED INTERIOR DROP IN WET WELL  
09-04-03 PER ADDED INTERIOR DROP IN WET WELL  
09-05-03 PER ADDED INTERIOR DROP IN WET WELL  
09-06-03 PER ADDED INTERIOR DROP IN WET WELL  
09-07-03 PER ADDED INTERIOR DROP IN WET WELL  
09-08-03 PER ADDED INTERIOR DROP IN WET WELL  
09-09-03 PER ADDED INTERIOR DROP IN WET WELL  
09-10-03 PER ADDED INTERIOR DROP IN WET WELL  
09-11-03 PER ADDED INTERIOR DROP IN WET WELL  
09-12-03 PER ADDED INTERIOR DROP IN WET WELL  
09-13-03 PER ADDED INTERIOR DROP IN WET WELL  
09-14-03 PER ADDED INTERIOR DROP IN WET WELL  
09-15-03 PER ADDED INTERIOR DROP IN WET WELL  
09-16-03 PER ADDED INTERIOR DROP IN WET WELL  
09-17-03 PER ADDED INTERIOR DROP IN WET WELL  
09-18-03 PER ADDED INTERIOR DROP IN WET WELL  
09-19-03 PER ADDED INTERIOR DROP IN WET WELL  
09-20-03 PER ADDED INTERIOR DROP IN WET WELL  
09-21-03 PER ADDED INTERIOR DROP IN WET WELL  
09-22-03 PER ADDED INTERIOR DROP IN WET WELL  
09-23-03 PER ADDED INTERIOR DROP IN WET WELL  
09-24-03 PER ADDED INTERIOR DROP IN WET WELL  
09-25-03 PER ADDED INTERIOR DROP IN WET WELL  
09-26-03 PER ADDED INTERIOR DROP IN WET WELL  
09-27-03 PER ADDED INTERIOR DROP IN WET WELL  
09-28-03 PER ADDED INTERIOR DROP IN WET WELL  
09-29-03 PER ADDED INTERIOR DROP IN WET WELL  
09-30-03 PER ADDED INTERIOR DROP IN WET WELL  
09-31-03 PER ADDED INTERIOR DROP IN WET WELL  
10-01-03 PER ADDED INTERIOR DROP IN WET WELL  
10-02-03 PER ADDED INTERIOR DROP IN WET WELL  
10-03-03 PER ADDED INTERIOR DROP IN WET WELL  
10-04-03 PER ADDED INTERIOR DROP IN WET WELL  
10-05-03 PER ADDED INTERIOR DROP IN WET WELL  
10-06-03 PER ADDED INTERIOR DROP IN WET WELL  
10-07-03 PER ADDED INTERIOR DROP IN WET WELL  
10-08-03 PER ADDED INTERIOR DROP IN WET WELL  
10-09-03 PER ADDED INTERIOR DROP IN WET WELL  
10-10-03 PER ADDED INTERIOR DROP IN WET WELL  
10-11-03 PER ADDED INTERIOR DROP IN WET WELL  
10-12-03 PER ADDED INTERIOR DROP IN WET WELL  
10-13-03 PER ADDED INTERIOR DROP IN WET WELL  
10-14-03 PER ADDED INTERIOR DROP IN WET WELL  
10-15-03 PER ADDED INTERIOR DROP IN WET WELL  
10-16-03 PER ADDED INTERIOR DROP IN WET WELL  
10-17-03 PER ADDED INTERIOR DROP IN WET WELL  
10-18-03 PER ADDED INTERIOR DROP IN WET WELL  
10-19-03 PER ADDED INTERIOR DROP IN WET WELL  
10-20-03 PER ADDED INTERIOR DROP IN WET WELL  
10-21-03 PER ADDED INTERIOR DROP IN WET WELL  
10-22-03 PER ADDED INTERIOR DROP IN WET WELL  
10-23-03 PER ADDED INTERIOR DROP IN WET WELL  
10-24-03 PER ADDED INTERIOR DROP IN WET WELL  
10-25-03 PER ADDED INTERIOR DROP IN WET WELL  
10-26-03 PER ADDED INTERIOR DROP IN WET WELL  
10-27-03 PER ADDED INTERIOR DROP IN WET WELL  
10-28-03 PER ADDED INTERIOR DROP IN WET WELL  
10-29-03 PER ADDED INTERIOR DROP IN WET WELL  
10-30-03 PER ADDED INTERIOR DROP IN WET WELL  
10-31-03 PER ADDED INTERIOR DROP IN WET WELL  
11-01-03 PER ADDED INTERIOR DROP IN WET WELL  
11-02-03 PER ADDED INTERIOR DROP IN WET WELL  
11-03-03 PER ADDED INTERIOR DROP IN WET WELL  
11-04-03 PER ADDED INTERIOR DROP IN WET WELL  
11-05-03 PER ADDED INTERIOR DROP IN WET WELL  
11-06-03 PER ADDED INTERIOR DROP IN WET WELL  
11-07-03 PER ADDED INTERIOR DROP IN WET WELL  
11-08-03 PER ADDED INTERIOR DROP IN WET WELL  
11-09-03 PER ADDED INTERIOR DROP IN WET WELL  
11-10-03 PER ADDED INTERIOR DROP IN WET WELL  
11-11-03 PER ADDED INTERIOR DROP IN WET WELL  
11-12-03 PER ADDED INTERIOR DROP IN WET WELL  
11-13-03 PER ADDED INTERIOR DROP IN WET WELL  
11-14-03 PER ADDED INTERIOR DROP IN WET WELL  
11-15-03 PER ADDED INTERIOR DROP IN WET WELL  
11-16-03 PER ADDED INTERIOR DROP IN WET WELL  
11-17-03 PER ADDED INTERIOR DROP IN WET WELL  
11-18-03 PER ADDED INTERIOR DROP IN WET WELL  
11-19-03 PER ADDED INTERIOR DROP IN WET WELL  
11-20-03 PER ADDED INTERIOR DROP IN WET WELL  
11-21-03 PER ADDED INTERIOR DROP IN WET WELL  
11-22-03 PER ADDED INTERIOR DROP IN WET WELL  
11-23-03 PER ADDED INTERIOR DROP IN WET WELL  
11-24-03 PER ADDED INTERIOR DROP IN WET WELL  
11-25-03 PER ADDED INTERIOR DROP IN WET WELL  
11-26-03 PER ADDED INTERIOR DROP IN WET WELL  
11-27-03 PER ADDED INTERIOR DROP IN WET WELL  
11-28-03 PER ADDED INTERIOR DROP IN WET WELL  
11-29-03 PER ADDED INTERIOR DROP IN WET WELL  
11-30-03 PER ADDED INTERIOR DROP IN WET WELL  
11-31-03 PER ADDED INTERIOR DROP IN WET WELL  
12-01-03 PER ADDED INTERIOR DROP IN WET WELL  
12-02-03 PER ADDED INTERIOR DROP IN WET WELL  
12-03-03 PER ADDED INTERIOR DROP IN WET WELL  
12-04-03 PER ADDED INTERIOR DROP IN WET WELL  
12-05-03 PER ADDED INTERIOR DROP IN WET WELL  
12-06-03 PER ADDED INTERIOR DROP IN WET WELL  
12-07-03 PER ADDED INTERIOR DROP IN WET WELL  
12-08-03 PER ADDED INTERIOR DROP IN WET WELL  
12-09-03 PER ADDED INTERIOR DROP IN WET WELL  
12-10-03 PER ADDED INTERIOR DROP IN WET WELL  
12-11-03 PER ADDED INTERIOR DROP IN WET WELL  
12-12-03 PER ADDED INTERIOR DROP IN WET WELL  
12-13-03 PER ADDED INTERIOR DROP IN WET WELL  
12-14-03 PER ADDED INTERIOR DROP IN WET WELL  
12-15-03 PER ADDED INTERIOR DROP IN WET WELL  
12-16-03 PER ADDED INTERIOR DROP IN WET WELL  
12-17-03 PER ADDED INTERIOR DROP IN WET WELL  
12-18-03 PER ADDED INTERIOR DROP IN WET WELL  
12-19-03 PER ADDED INTERIOR DROP IN WET WELL  
12-20-03 PER ADDED INTERIOR DROP IN WET WELL  
12-21-03 PER ADDED INTERIOR DROP IN WET WELL  
12-22-03 PER ADDED INTERIOR DROP IN WET WELL  
12-23-03 PER ADDED INTERIOR DROP IN WET WELL  
12-24-03 PER ADDED INTERIOR DROP IN WET WELL  
12-25-03 PER ADDED INTERIOR DROP IN WET WELL  
12-26-03 PER ADDED INTERIOR DROP IN WET WELL  
12-27-03 PER ADDED INTERIOR DROP IN WET WELL  
12-28-03 PER ADDED INTERIOR DROP IN WET WELL  
12-29-03 PER ADDED INTERIOR DROP IN WET WELL  
12-30-03 PER ADDED INTERIOR DROP IN WET WELL  
12-31-03 PER ADDED INTERIOR DROP IN WET WELL

REGISTERED  
No. 19900094  
STATE OF INDIANA  
PROFESSIONAL ENGINEER  
Andrew C. Cochran  
DATE: 8/26/03  
THIS DRAWING AND THE IDEAS, DESIGNS AND CONCEPTS CONTAINED HEREIN ARE THE EXCLUSIVE INTELLECTUAL PROPERTY OF THE SCHNEIDER CORPORATION, AND ARE NOT TO BE USED OR REPRODUCED, IN WHOLE OR IN PART, WITHOUT THE WRITTEN CONSENT OF THE SCHNEIDER CORPORATION.  
© COPYRIGHTED BY THE SCHNEIDER CORP. (2003)

**Schneider**  
THE SCHNEIDER CORPORATION  
Historic Fort Harrison  
8901 Otis Avenue  
Indianapolis, IN 46216-1037  
Telephone: 317.826.7100  
Fax: 317.826.7300  
www.schneidercorp.com  
Architecture  
Civil Engineering  
Environmental Engineering  
Geotechnical Services  
GIS \* US  
Home Builder Services  
Interior Design  
Land Surveying  
Landscape Architecture  
Transportation Engineering

PRAIRIE HOLLOW  
SECTION 1  
INGALLS, INDIANA  
C. P. MORGAN COMMUNITIES, L.P.  
4670 HAVEN POINT BLVD., INDIANAPOLIS, IN 46280

DATE: 7/1/03 PROJECT NO.: 4496.001  
DRAWN BY: BAB CHECKED BY: ACC  
SHEET TITLE: LIFT STATION PLAN & DETAILS  
DRAWING FILES:  
R:\44\4496\001\DWG\SANITARY\_05\C502.DWG  
XREF: R:\44\4496\001\DWG\4496001S.dwg  
XREF: R:\44\4496\001\DWG\1BS.dwg  
XREF: R:\44\4496\001\DWG\SAN\_05.dwg  
SHEET NO.:  
C502