

PLANT SCHEDULE										
PLAN KEY	BOTANICAL NAME	COMMON NAME	SIZE	QUANTITY	ROOT CONDITION	DATE	ON CENTER	SPACING	SPECIAL INSTRUCTIONS	
OGM	ACER RUBRUM 'OCTOBER GLORY'	OCTOBER GLORY MAPLE	2" CALIPER	3	X		28'	O.C.		
NM	ACER PLATANODES	NORWAY MAPLE	2" CALIPER	13	X		28'	O.C.		
BP	PIRUS CALLERYANA 'BRADFORD'	BRADFORD PEAR	2" CALIPER	26	X		28'	O.C.		
BB	EVONYMUS ALATA 'COMPACTA'	BURNING BUSH	18"-24" SPREAD	68	X		3'	O.C.		
WY	TAXUS MEDIA 'WARD'	WARD'S YEW	12" SPREAD	57		X	3'	O.C.		
BAY	MYRTICA PENSYLVANICA	BAYBERRY	15" SPREAD	19	X		2'	O.C.		
MP	PIRUS MUGO	MUGO PINE	15" HEIGHT	96		X	4'	O.C.		
RJC	MALUS 'RED JADE'	RED JADE CRAB	3/4"-1" CALIPER	18	X		2'	O.C.		
NS	PIRUS ABIES	NORWAY SPRUCE	6"-8" HEIGHT	73	X		4'	O.C.		
AP	PIRUS NIGRA	AUSTRIAN PINE	6"-8" HEIGHT	21	X		2'	O.C.		
QFS	SPIRUA BUNALDA 'GOLD FLAME'	GOLD FLAME SPIRUA	18" SPREAD	36		X	2'	O.C.		
SC	MALUS SARGENTI	SARGENT CRAB	3/4"-1" CALIPER	8	X		2'	O.C.		
RGB	BERBERIS THUNDERBOLT 'ROSEY GLOW'	ROSEY GLOW BARBERY	15" SPREAD	30		X	4'	O.C.		
RSM	ACER RUBRUM 'RED SUNSET'	RED SUNSET MAPLE	2" CALIPER	11	X		2'	O.C.		

#### PLAN NOTES:

- ① LINE OF MULCH EDGE
- ② NOT USED

#### LANDSCAPE NOTES

- WORK SHOWN ON THIS SHEET SHALL BE DONE BY A LANDSCAPE CONTRACTOR WHO IS A MEMBER IN GOOD STANDING OF THE INDIANA ASSOCIATION OF NURSESMEN.
- THE LANDSCAPE CONTRACTOR SHALL NOTIFY THE LANDSCAPE ARCHITECT IN WRITING BEFORE THE BID DATE OF ANY PLANTS THAT THEY FEEL MAY NOT SURVIVE IN LOCATIONS AS SHOWN ON THE PLAN.
- REFER TO C1 FOR EROSION CONTROL.
- ALL LANDSCAPING TO BE PLACED IN PHASE 1 WITH THE EXCEPTION OF BUILDING LANDSCAPING AROUND PHASE 2 BUILDINGS AND PHASE 2 DUMPSTER.
- SOO ENTIRE SITE - OPTION SOO BANK OF POND, FRONT AND SIDE OF EACH BUILDING AND SEED THE REMAINING SITE. (TEMPORARY SEED ALL EFFECTED AREAS OF PHASE 2)

#### SCHEDULE NOTES:

PLANTS SHALL MEET OR EXCEED THE STANDARDS AS DESCRIBED IN ANSI Z60.1 (LATEST EDITION) PUBLISHED BY THE AMERICAN ASSOCIATION OF NURSESMEN.

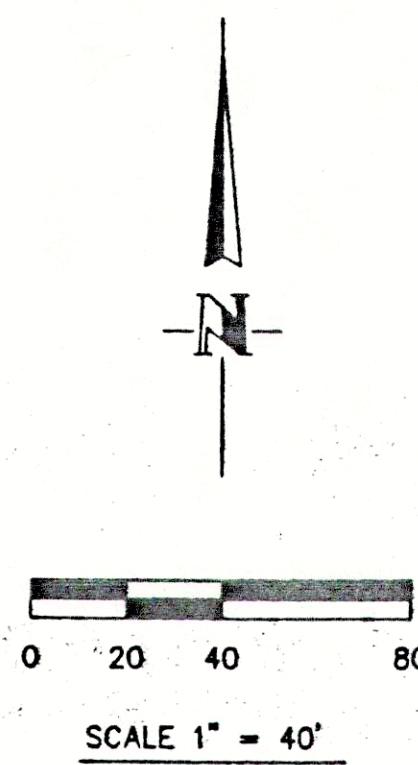
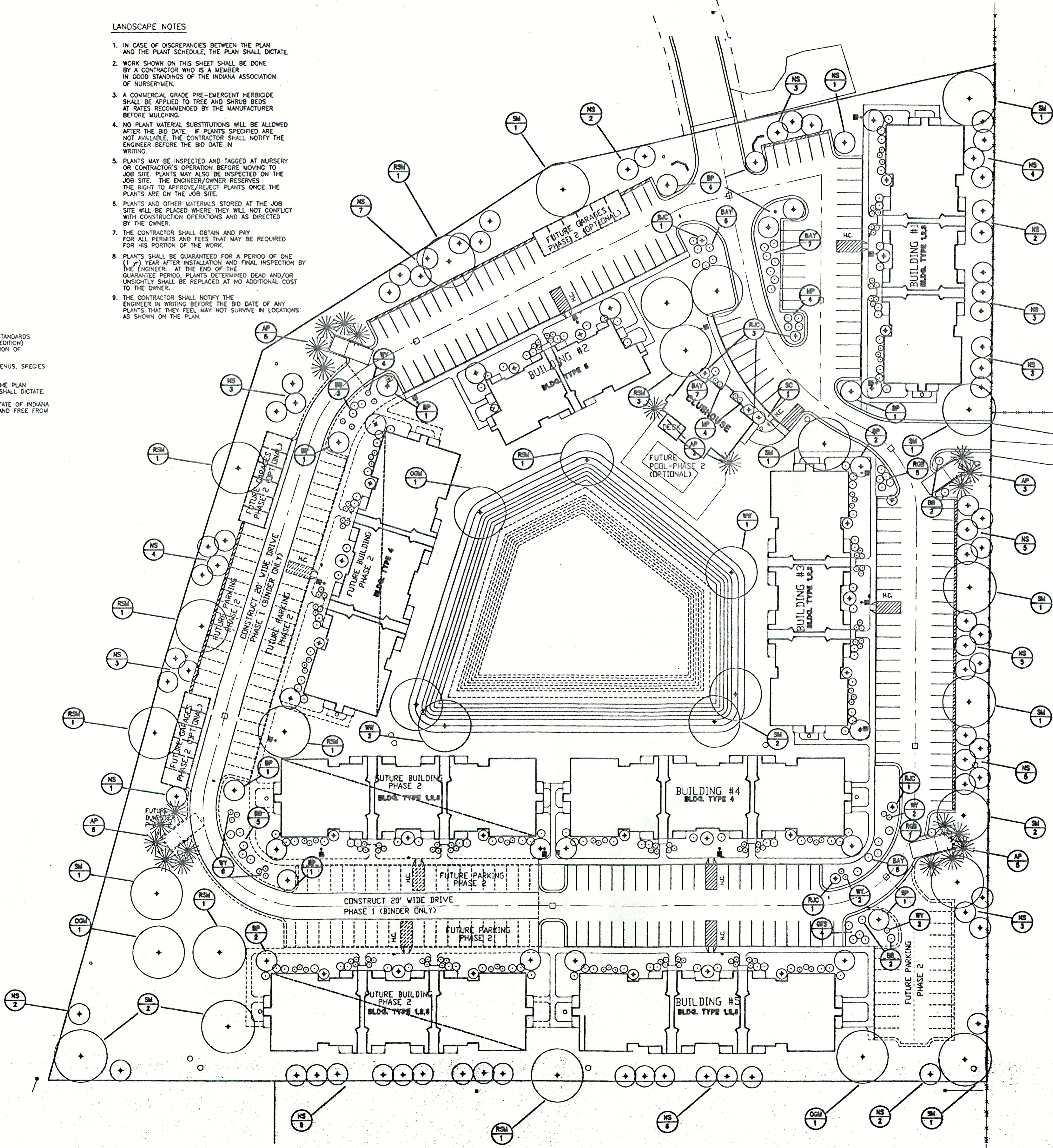
PLANTS SHALL BEAR A TAG SHOWING GENUS, SPECIES AND VARIETY.

IN CASE OF DISCREPANCIES BETWEEN THE PLAN AND THE PLANT SCHEDULE, THE PLAN SHALL DICTATE.

PLANTS SHALL BE CERTIFIED BY THE STATE OF INDIANA DEPARTMENT OF NATURAL RESOURCES AND FREE FROM DISEASE OR HAZARDOUS INSECTS.

#### LANDSCAPE NOTES

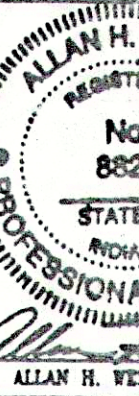
- IN CASE OF DISCREPANCIES BETWEEN THE PLAN AND THE PLANT SCHEDULE, THE PLAN SHALL DICTATE.
- WORK SHOWN ON THIS SHEET SHALL BE DONE BY A CONTRACTOR WHO IS A MEMBER IN GOOD STANDING OF THE INDIANA ASSOCIATION OF NURSESMEN.
- A COMMERCIAL GRADE PRE-EMERGENT HERBICIDE SHALL BE APPLIED TO TREE AND SHRUB BEDS AT RATES RECOMMENDED BY THE MANUFACTURER BEFORE MULCHING.
- NO PLANT MATERIAL SUBSTITUTIONS WILL BE ALLOWED AFTER THE BID DATE. IF PLANTS SPECIFIED ARE NOT AVAILABLE, THE CONTRACTOR SHALL NOTIFY THE ENGINEER BEFORE THE BID DATE IN WRITING.
- PLANTS MAY BE INSPECTED AND TAGGED AT NURSERY OR CONTRACTOR'S OPERATION BEFORE MOVING TO JOB SITE. PLANTS MAY ALSO BE INSPECTED ON THE JOB SITE. THE ENGINEER/OWNER RESERVES THE RIGHT TO APPROVE/REJECT PLANTS ONCE THE PLANTS ARE ON THE JOB SITE.
- PLANTS AND OTHER MATERIALS STORED AT THE JOB SITE WILL BE PLACED WHERE THEY WILL NOT CONFLICT WITH CONSTRUCTION OPERATIONS AND AS DIRECTED BY THE OWNER.
- THE CONTRACTOR SHALL OBTAIN AND PAY FOR ALL PERMITS AND FEES THAT MAY BE REQUIRED FOR HIS PORTION OF THE WORK.
- PLANTS SHALL BE GUARANTEED FOR A PERIOD OF ONE (1) YEAR AFTER INSTALLATION AND FINAL INSPECTION BY THE ENGINEER. AT THE END OF THE GUARANTEE PERIOD, PLANTS DETERMINED DEAD AND/OR UNSIGHTLY SHALL BE REPLACED AT NO ADDITIONAL COST TO THE OWNER.
- THE CONTRACTOR SHALL NOTIFY THE ENGINEER IN WRITING BEFORE THE BID DATE OF ANY PLANTS THAT THEY FEEL MAY NOT SURVIVE IN LOCATIONS AS SHOWN ON THE PLAN.



**WEIHE ENGINEERS, INC.**  
10005 NORTH COLLEGE AVENUE  
INDIANAPOLIS, INDIANA 46220  
(317) 544-0611 FAX (317) 544-0646  
TOLL-FREE (800) 455-0605  
VICI - PRESIDENT



DATE	BY	PROJECT NO.	DATE	BY



**PENDLETON PLACE APARTMENTS**  
SHEEHAN CONSTRUCTION CO., INC.  
**LANDSCAPE PLAN**  
Part of the 182/4, Sections 18, Trp. 18 North, Range 7 East, Paid Credit Prop. Madison County, Indiana

SHEET NO. **C7**