

CONSTRUCTION DOCUMENTS

FOR

MAPLEWOOD AT HUNTZINGER FARM SECTION 5

HUNTZINGER BOULEVARD

PENDLETON, IN

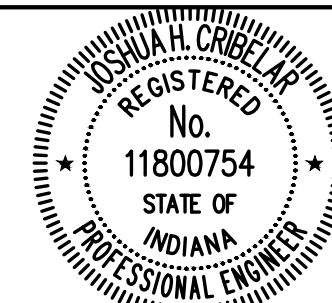


ARBOR HOMES
9225 HARRISON PARK COURT
INDIANAPOLIS, IN 46216



MAPLEWOOD AT HUNTZINGER FARM SECTION 5

HUNTZINGER BOULEVARD
PENDLETON, IN



Joshua H. Crisler
CERTIFIED BY

ISSUANCE INDEX

DATE:
05/03/2021
PROJECT PHASE:
CONSTRUCTION DOCUMENTS

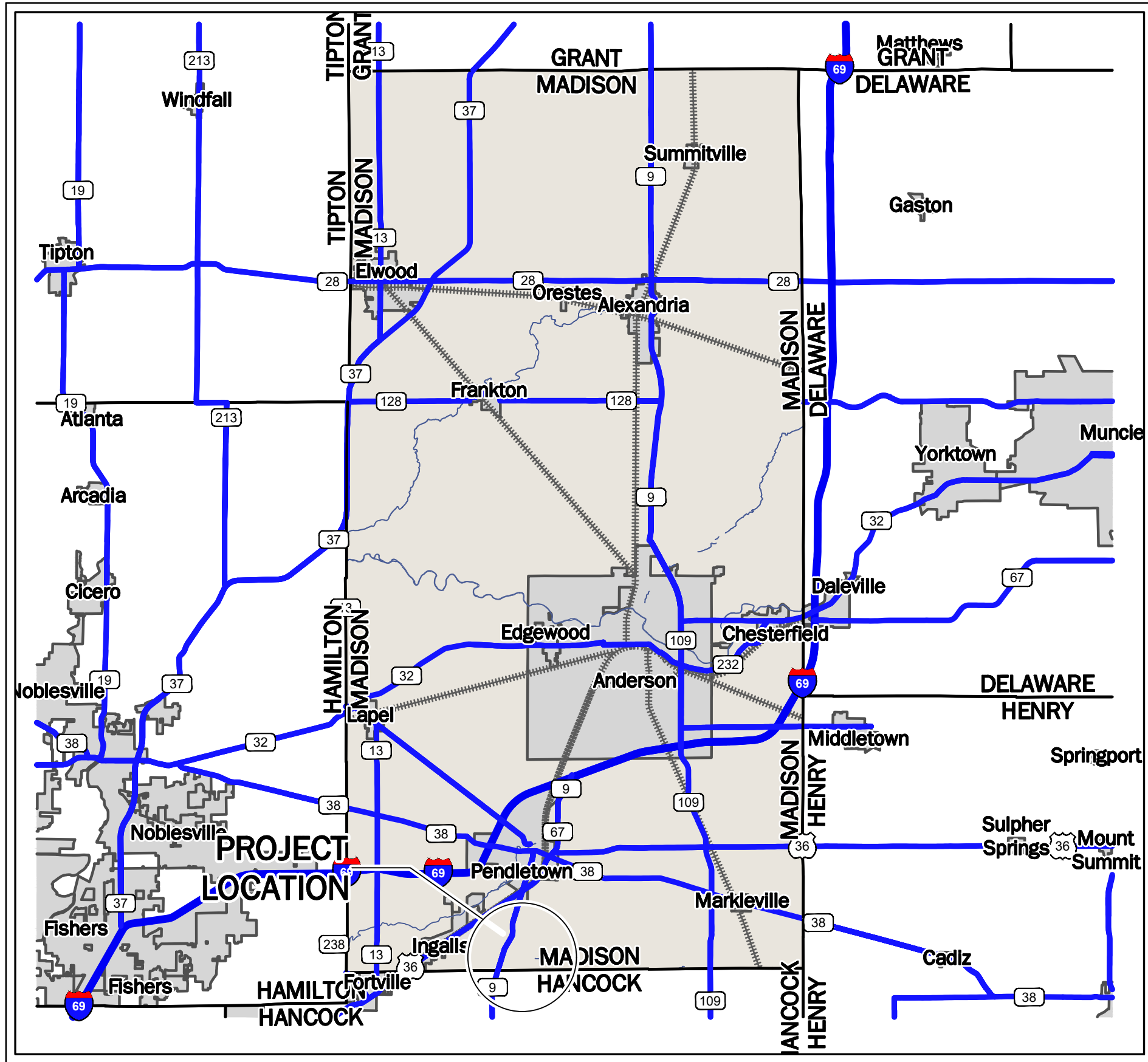
REVISION SCHEDULE

NO.	DESCRIPTION	DATE

Project Number 2019.02070

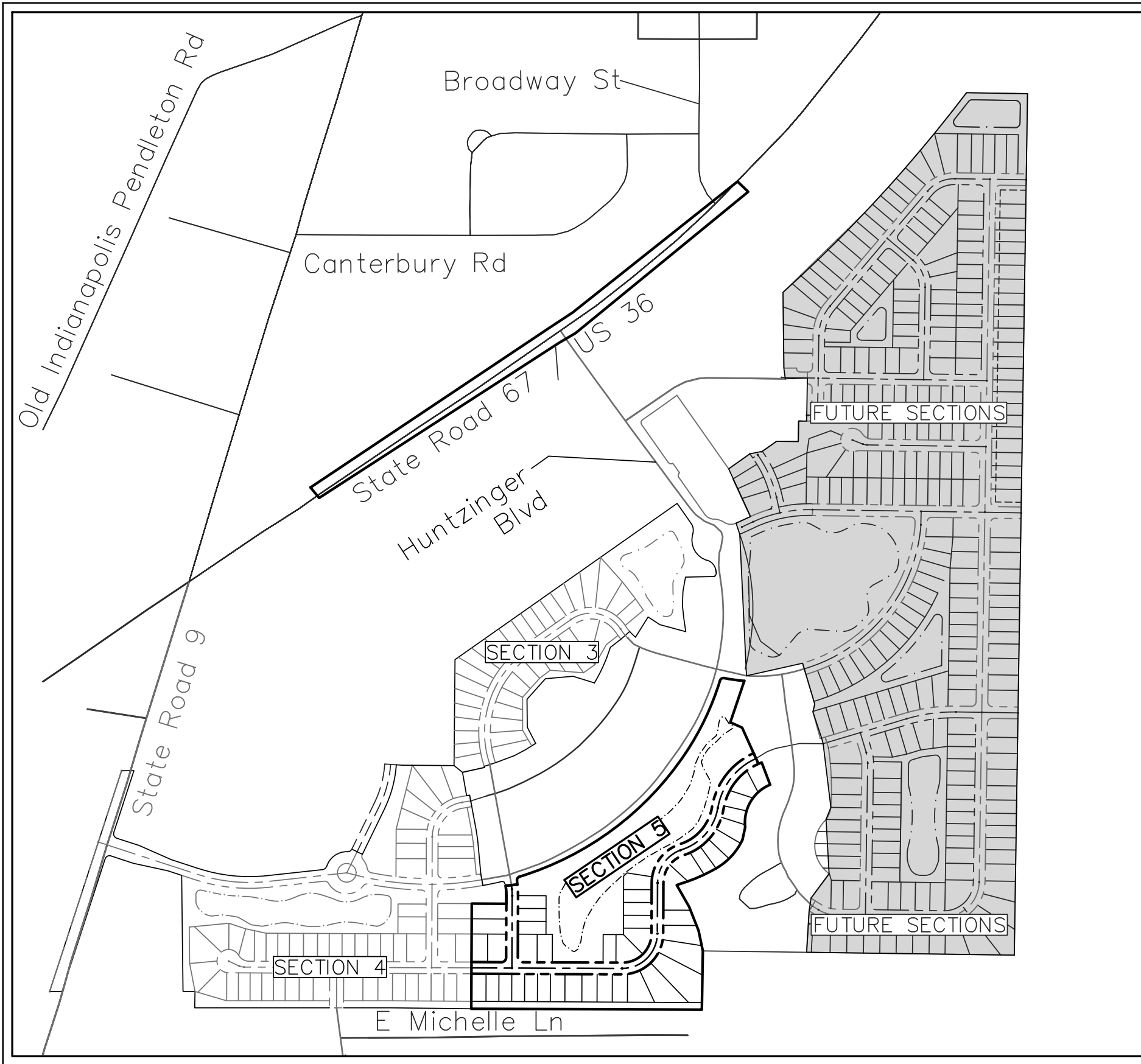
TITLE SHEET

C001



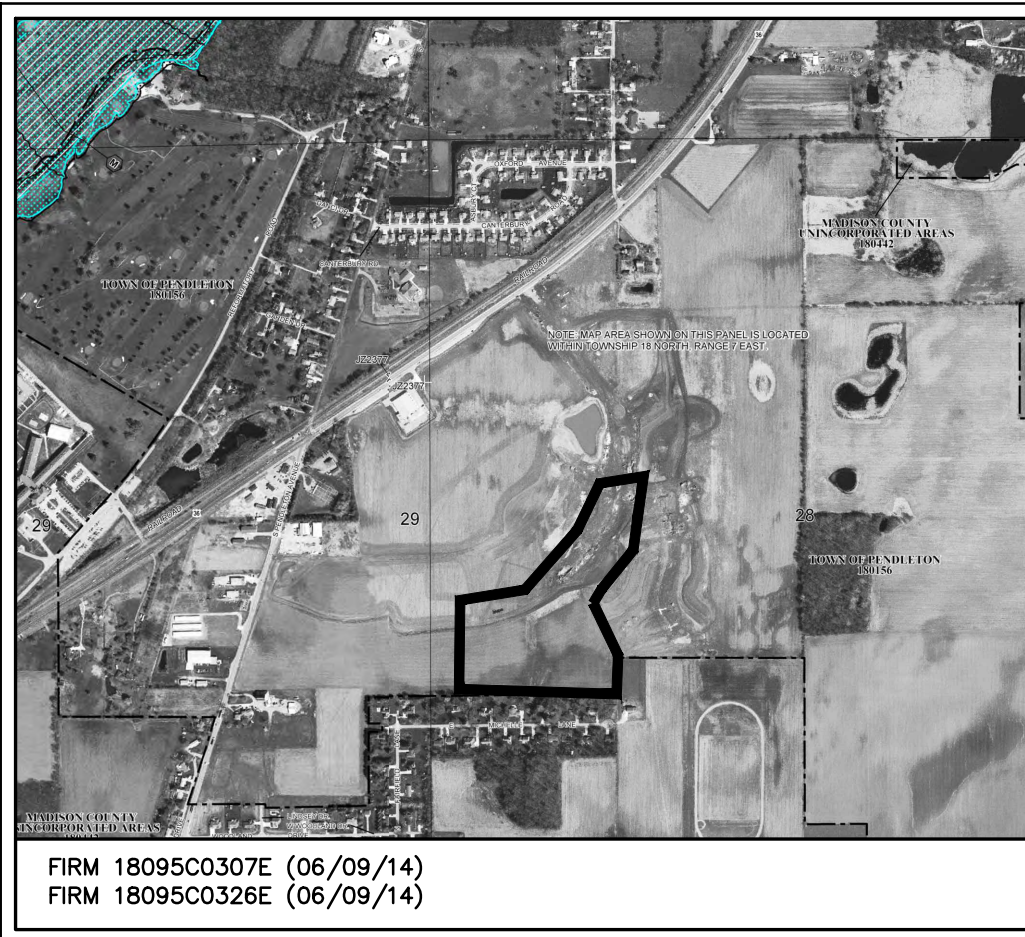
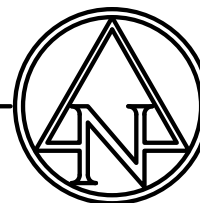
LOCATION MAP

NOT TO SCALE



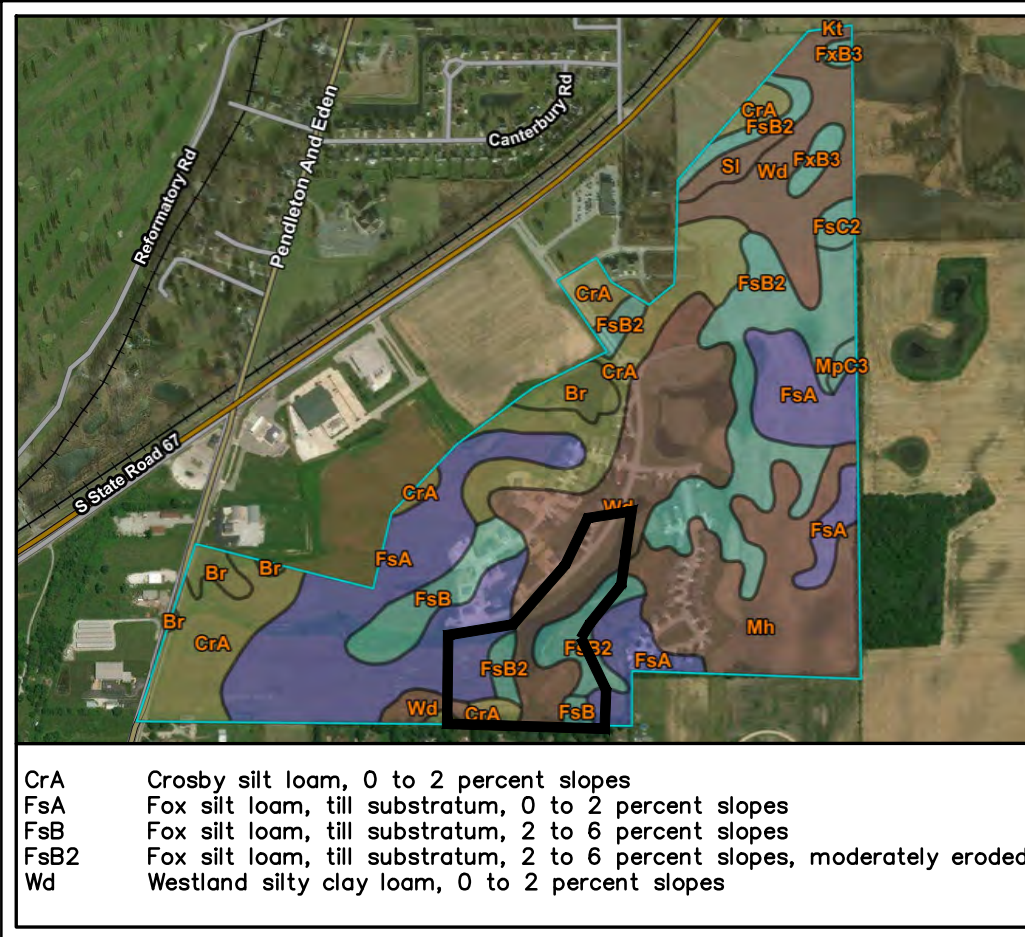
VICINITY MAP

NOT TO SCALE



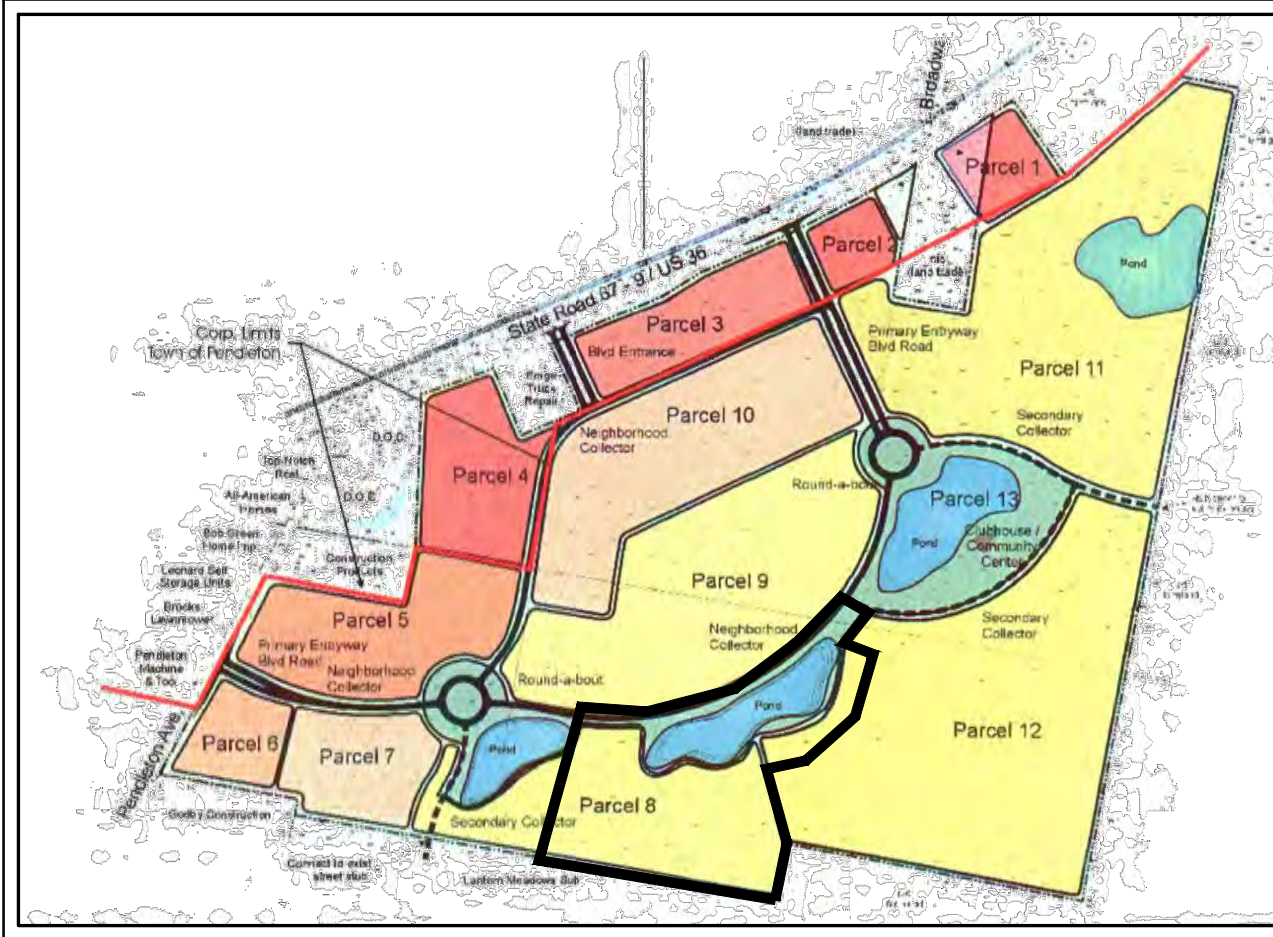
FEMA MAP

NOT TO SCALE



SOILS MAP

NOT TO SCALE



HUNTZINGER FARM PARCEL MAP

NOT TO SCALE



INDEX	
DESCRIPTION	SHEET No.
TITLE SHEET	C001
GENERAL NOTES	C002
SPECIFICATOINS	C003
SANITARY SPECIFICATIONS	C004-C007
EXISTING TOPOGRAPHY & DEMOLITION PLAN	C100
DEVELOPMENT PLAN	C200
TRAFFIC AND LIGHTING PLAN	C210
ROAD PLAN & PROFILE	C300-C302
DETAILED GRADING PLAN	C310
EMERGENCY FLOOD ROUTING	C320
STORM SEWER PLAN & PROFILE	C400-C402
SANITARY PLAN & PROFILE	C410-C412
WATER DISTRIBUTION PLAN	C421
UTILITY LATERAL PLAN	C431
EROSION CONTROL PLAN	C500
STORMWATER POLLUTION PREVENTION PLAN	C510
EROSION CONTROL DETAILS	C520-C522
STREET DETAILS	C600
STORM SEWER DETAILS	C601
WATER DETAILS	C602
SANITARY SEWER DETAILS	C603
LANDSCAPE PLAN	C700
LANDSCAPE DETAILS	C710

BENCHMARK DATA

BENCHMARK INFORMATION (NAVD 88 DATUM)
BENCHMARK ELEVATIONS WERE ESTABLISHED FROM GPS OBSERVATIONS ON THE IDENTIFIED BASE STATION DESCRIBED WITHIN. AN NGS OPUS SOLUTION (FILE #0475291.186) WAS OBTAINED AND USED TO CONTROL THE PROJECT'S VERTICAL DATUM. THE ELEVATIONS WERE THEN TRANSFERRED TO THE SITE USING DIFFERENTIAL LEVELING.

AS TBM #100
CARRIED REBAR SET IN GRASS ISLAND OF HUNTZINGER BOULEVARD; LOCATED ±100' SOUTH OF FAIRFIELD LANE.
ELEV: 878.80

AS TBM #1
CHISELED "X" ON SOUTH BOLT OF A FIRE HYDRANT; LOCATED ±25' SOUTH OF FAIRFIELD LANE AND ±50' WEST OF THE END OF FAIRFIELD LANE.
ELEV: 879.52

AS TBM #2
CHISELED "X" ON NORTH BOLT OF A FIRE HYDRANT; LOCATED ±25' SOUTH OF WATERS EDGE ROAD AND ±20' EAST OF WATERS EDGE ROAD.
ELEV: 880.88

AS TBM #3
CHISELED "X" ON NORTHEAST BOLT OF A FIRE HYDRANT; LOCATED ±30' WEST OF HUNTZINGER BOULEVARD AND ±100' NORTH OF ROUNDABOUT.
ELEV: 879.83

AS TBM #4
CHISELED "X" ON NORTHWEST BOLT OF A FIRE HYDRANT; LOCATED AT THE NORTHEAST CORNER OF HUNTZINGER BOULEVARD AND COLD SPRINGS DRIVE.
ELEV: 878.74

AS TBM #5
CHISELED "X" ON EAST-NORTHWEST BOLT OF A FIRE HYDRANT; LOCATED ±25' SOUTH OF HUNTZINGER BOULEVARD AND ±125' SOUTHWEST OF 1642 RESIDENCE.
ELEV: 879.73

AS TBM #6
CHISELED "X" ON NORTHEAST BOLT OF A FIRE HYDRANT AT THE NORTHEAST CORNER MAPLEWOOD LANE AND COLD SPRINGS DRIVE.
ELEV: 882.67

AS TBM #7
CHISELED "X" ON SOUTHWEST BOLT; LOCATED AT THE SOUTH END OF FAIR WEATHER DRIVE DEAD END.
ELEV: 879.72

UTILITY CONTACTS

UTILITY	COMPANY	CONTACT	PHONE NO.
CABLE TELEVISION	COMCAST	RICHARD HACKER	(765) 776-0832
ELECTRIC	PENDLETON PUBLIC WORKS DEPT.	CRAIG SWITZER	(765) 208-0104
ELECTRIC (TRAFFIC SIGNAL)	DUKE ENERGY	CINDY ROWLAND	(317) 776-5341
GAS	VECTREN	KIMBERLY BURTON-KELLY	(317) 691-5649
SANITARY SEWER	FALL CREEK REG. WASTE DIST.	TIM MCCURDY	(765) 208-0178
TELEPHONE	COMCAST	RICHARD HACKER	(765) 776-0832
WATER	PENDLETON PUBLIC WORKS DEPT.	JUSTIN WOOD	(765) 208-0105

!! CAUTION !!

THE LOCATIONS OF ALL EXISTING UNDERGROUND UTILITIES SHOWN ON THIS PLAN ARE BASED UPON ABOVE GROUND EVIDENCE (including, but not limited to, manholes, inlets, valves, and marks made upon the ground by others) AND ARE SPECULATIVE IN NATURE. THERE MAY ALSO BE OTHER EXISTING UNDERGROUND UTILITIES FOR WHICH THERE IS NO ABOVE GROUND EVIDENCE OR FOR WHICH NO ABOVE GROUND EVIDENCE WAS OBSERVED. THE EXACT LOCATIONS OF SAID EXISTING UNDERGROUND UTILITIES SHALL BE VERIFIED BY THE CONTRACTOR PRIOR TO ANY AND ALL CONSTRUCTION.

CALL TOLL FREE
"811" OR 1-800-382-5544
- INDIANA UNDERGROUND -