

CONTRACTOR SHALL ADHERE AND REFERENCE THE CURRENT FALL CREEK REGIONAL WASTE DISTRICT STANDARDS FOR DESIGN AND CONSTRUCTION OF SANITARY SEWERS.

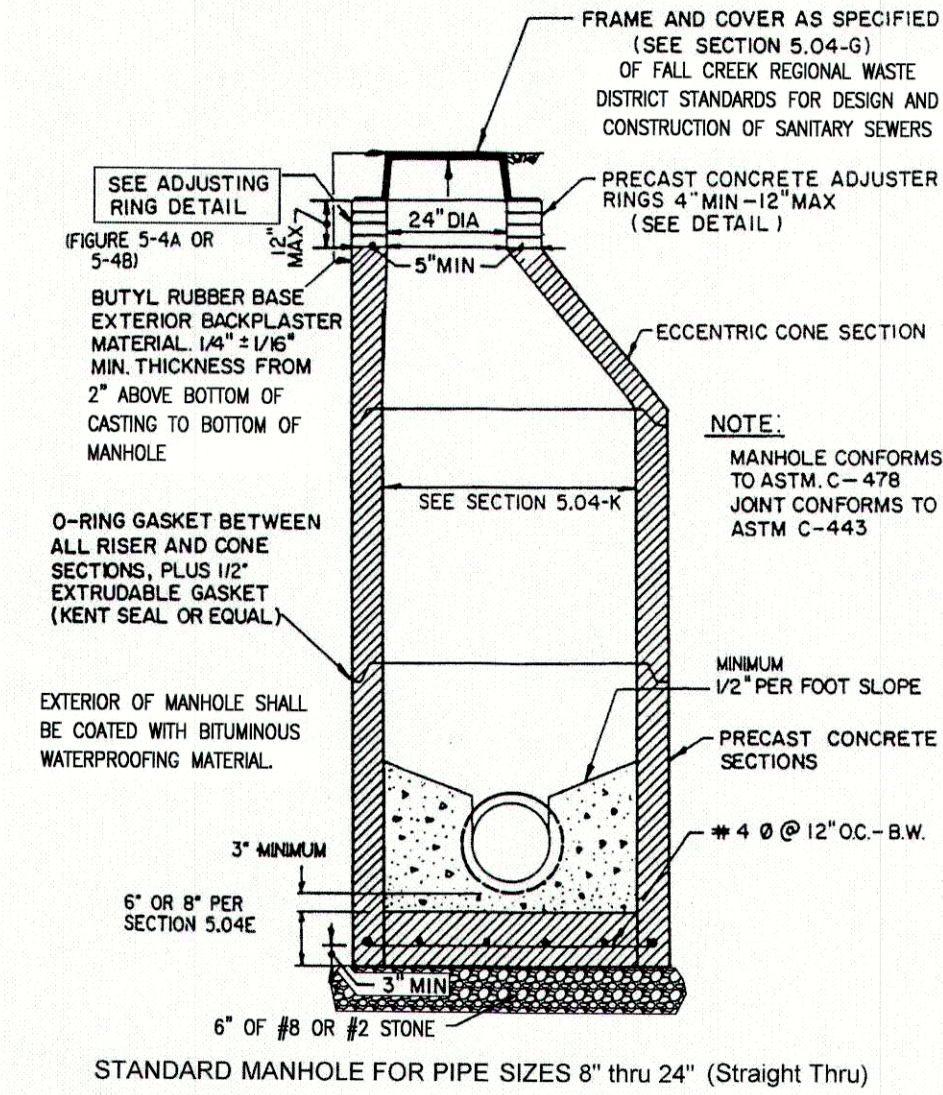


FIGURE 5-1

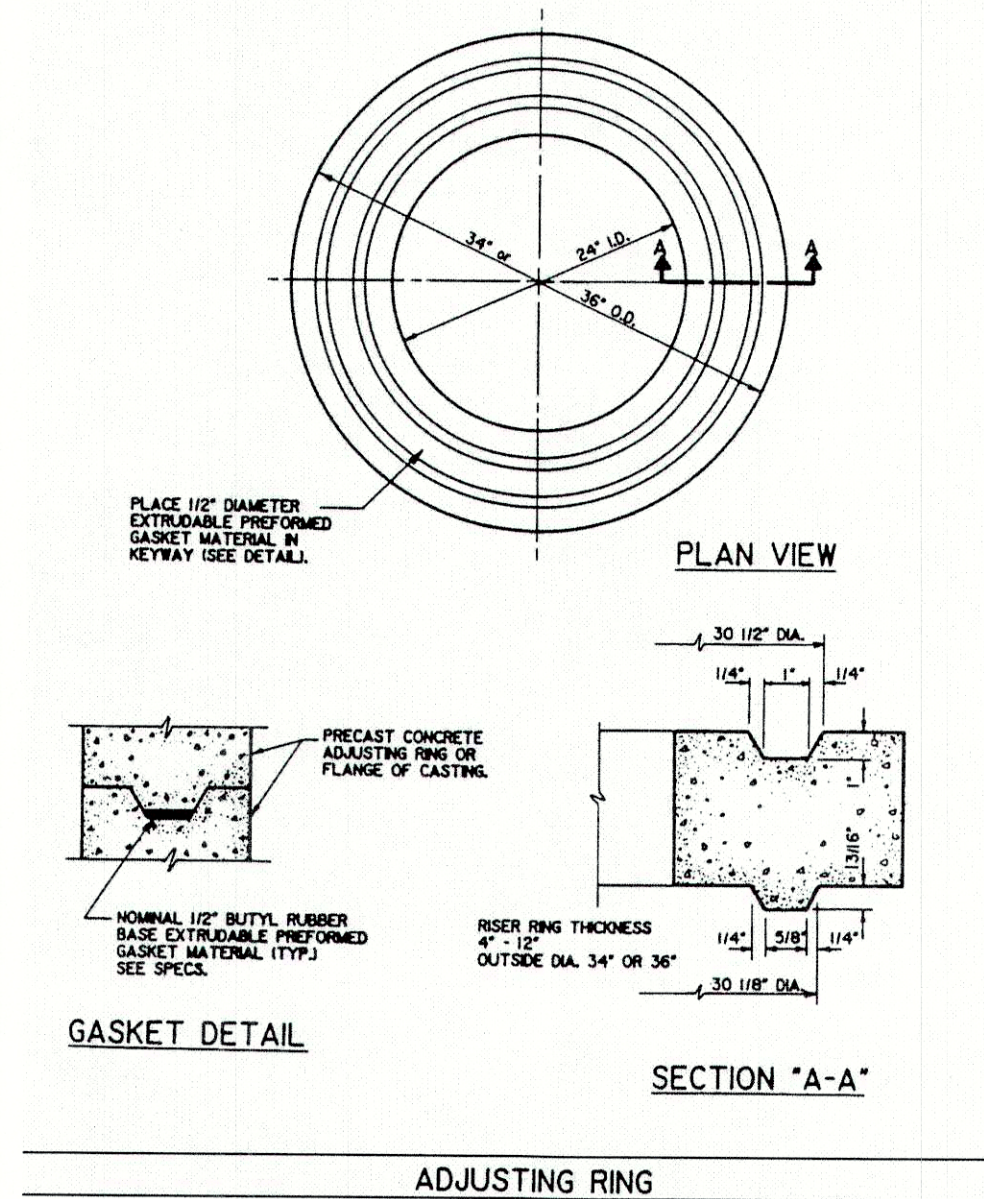


FIGURE 5-4A

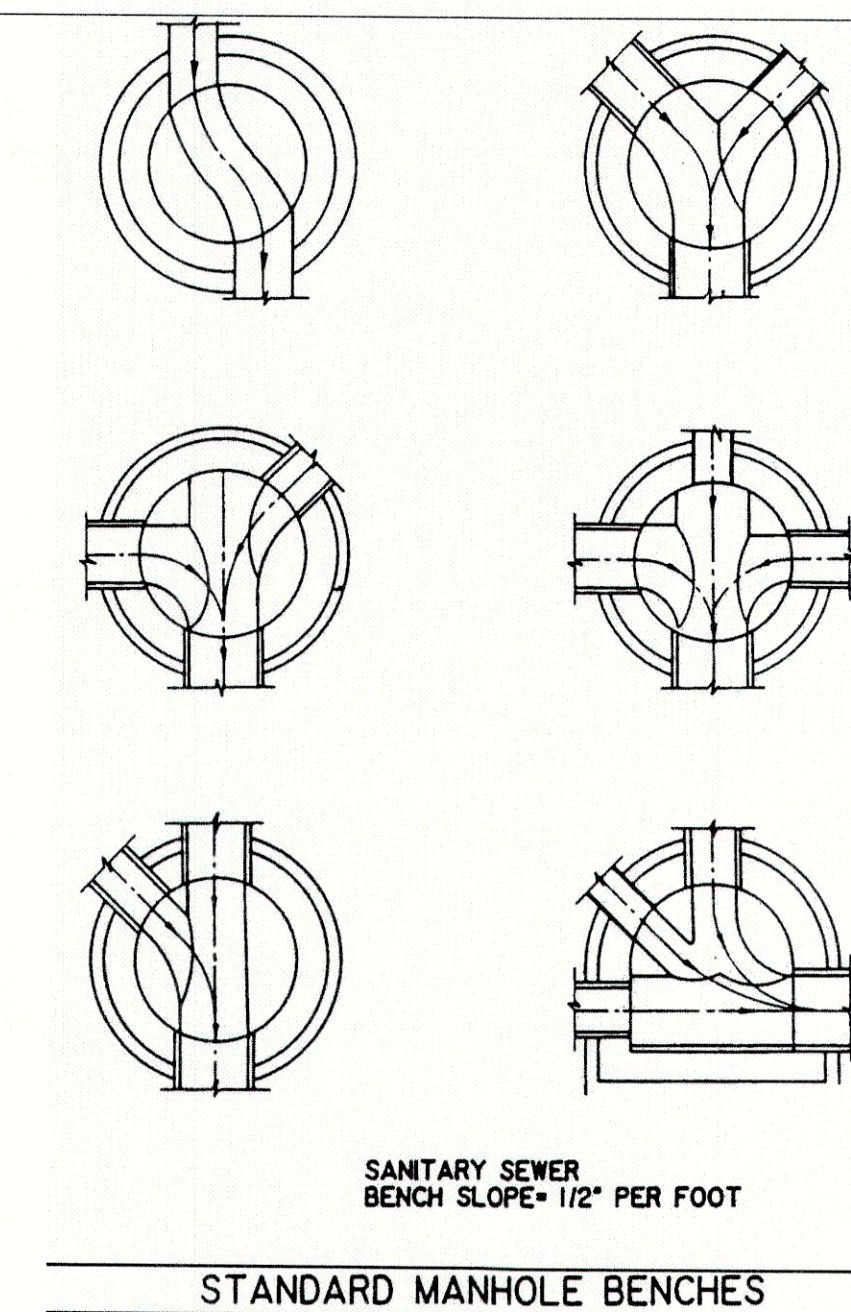


FIGURE 5-6

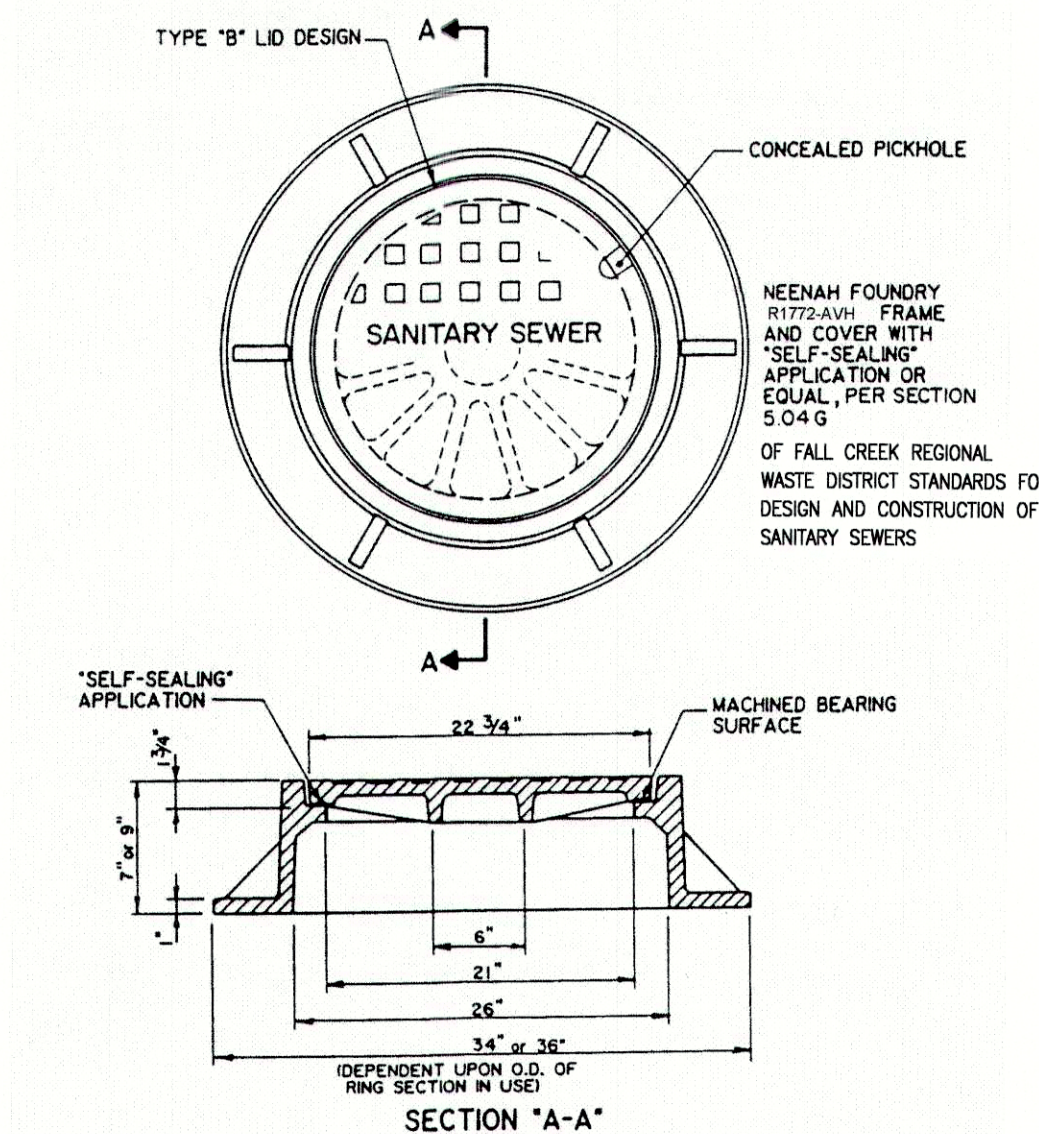


FIGURE 5-7

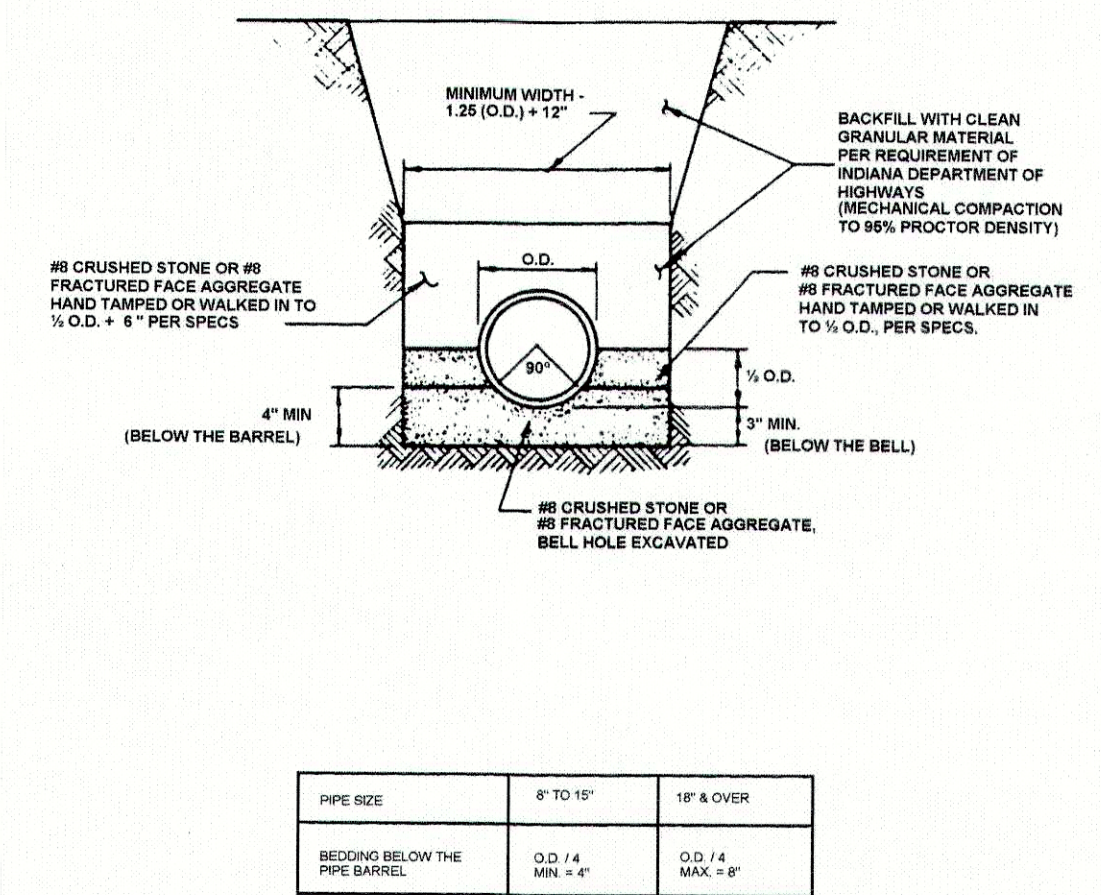


FIGURE 7-2

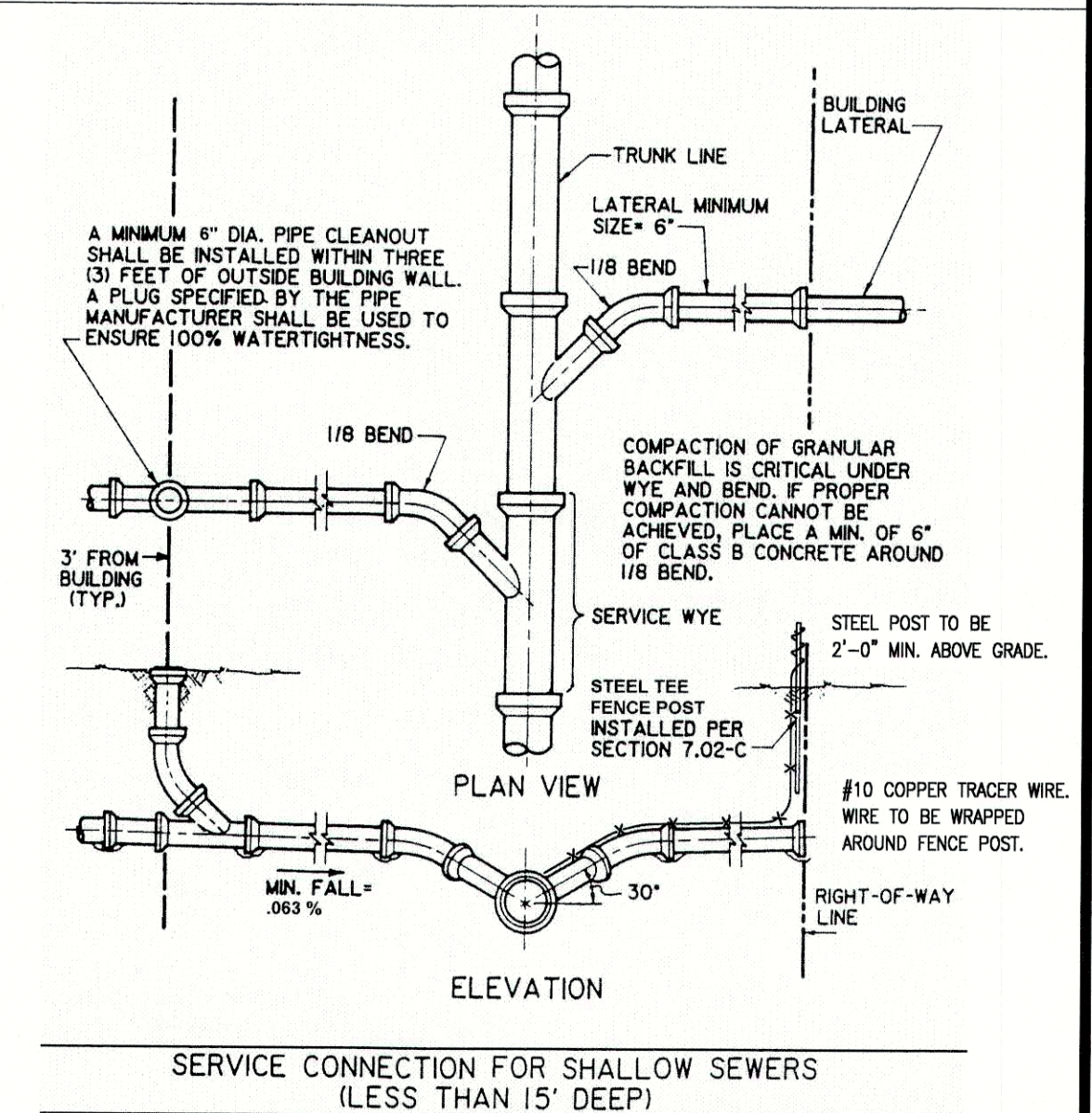


FIGURE 7-4

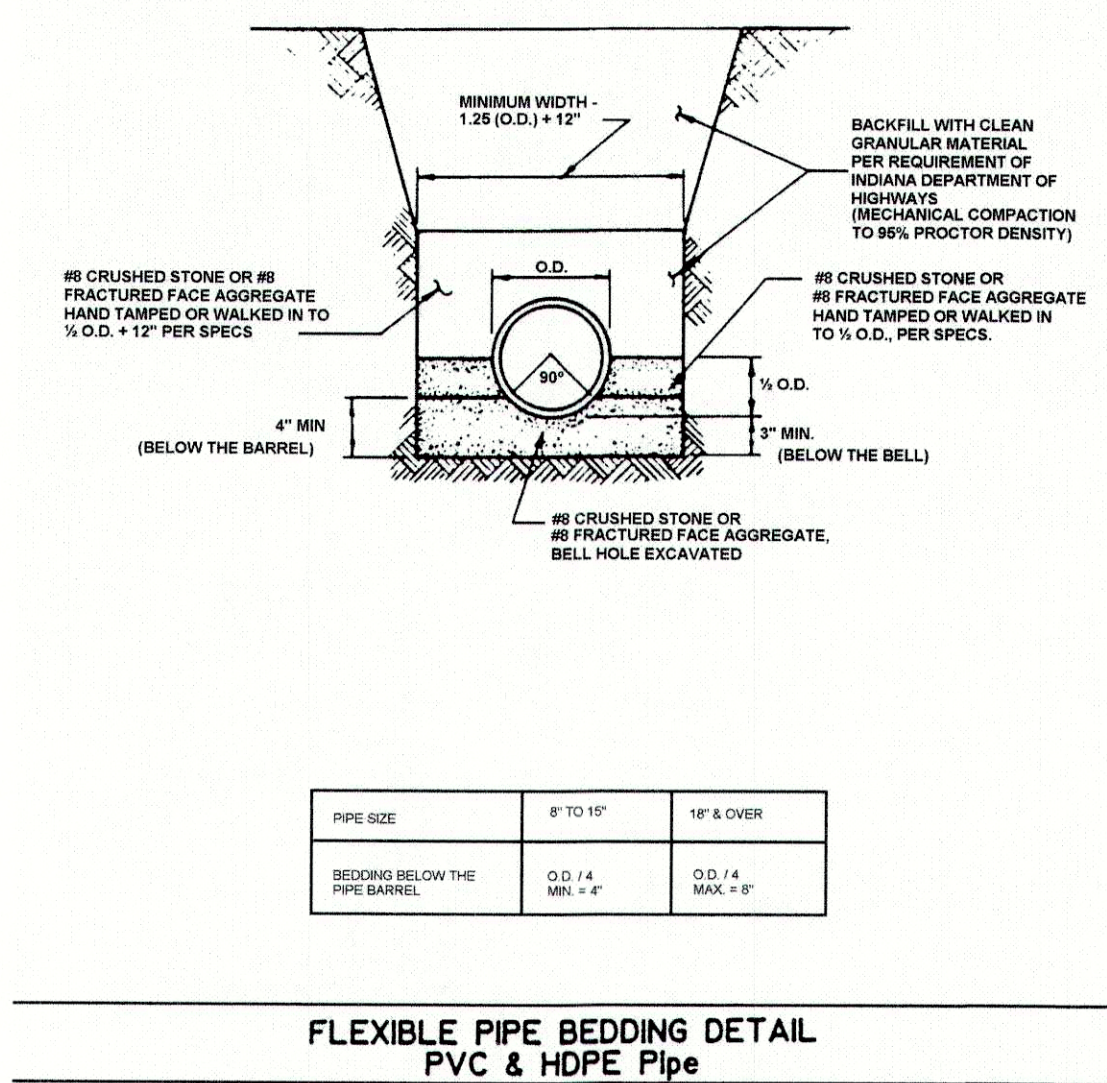
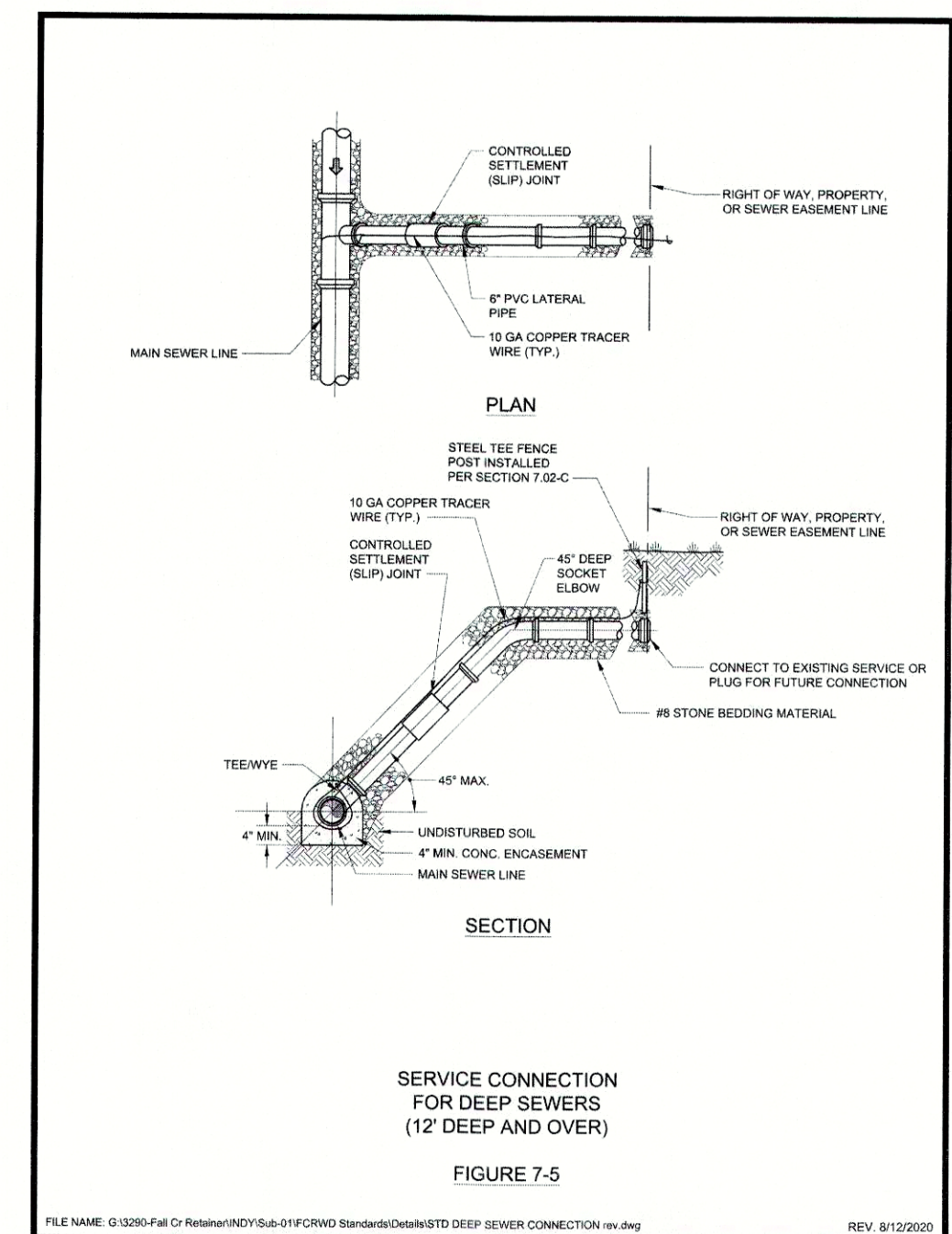


FIGURE 7-5



REVISIONS		
DATE	DESCRIPTION	BY

**HWC**  
**ENGINEERING**  
INDIANAPOLIS - TERRE HAUTE  
LAFAYETTE - MUNICE - NEW ALBANY  
www.hwcengineering.com

MAPLE TRAILS SECTION 6  
INGALLS, INDIANA  
FCRWD SANITARY DETAILS

PROFESSIONAL ENGINEER  
No. 11400758  
STATE OF INDIANA

*Kristopher K. Leichhorn*  
DRAWN BY TD/GM  
CHECKED BY KE  
DATE SEPTEMBER 17, 2021  
SCALE AS SHOWN  
SHEET

**C8.5**  
FCRWD SANITARY DETAILS