

MAPLE TRAILS

SECTION 6

CONSTRUCTION PLANS

SEPTEMBER 17, 2021



DEVELOPER/PREPARED FOR:

ARBOR HOMES
9225 HARRISON PARK CT.
INDIANAPOLIS, IN 46216
CONTACT: SEAN DOWNEY

SHEET INDEX:

- C1.0 COVER
- C1.1-1.2 DEVELOPMENT PLAN
- C1.3-1.4 PRE-CONSTRUCTION STORMWATER POLLUTION PREVENTION AND DEMOLITION PLAN
- C1.5-1.6 POST-CONSTRUCTION STORMWATER POLLUTION PREVENTION PLAN
- C1.7-1.8 UTILITY LATERAL PLAN
- C2.0-2.3 STREET PLAN & PROFILES
- C3.0 ENTRANCE PLAN
- C3.1 MAINTENANCE OF TRAFFIC PLAN
- C3.2 INTERSECTION DETAILS
- C3.3-3.4 TRAFFIC CONTROL PLAN
- C4.0-4.2 SANITARY SEWER PLAN & PROFILES
- C6.0-6.3 STORM SEWER PLAN & PROFILES
- C7.0-7.1 WATER DISTRIBUTION PLAN
- C8.0 STORMWATER POLLUTION PREVENTION NOTES
- C8.1 STORMWATER POLLUTION PREVENTION DETAILS
- C8.2-8.4 CONSTRUCTION DETAILS
- C8.5 FCRWD SANITARY DETAILS
- C8.6-8.8 FCRWD SANITARY SPECIFICATIONS
- L1.0-1.1 LANDSCAPE PLAN

UTILITY CONTACTS

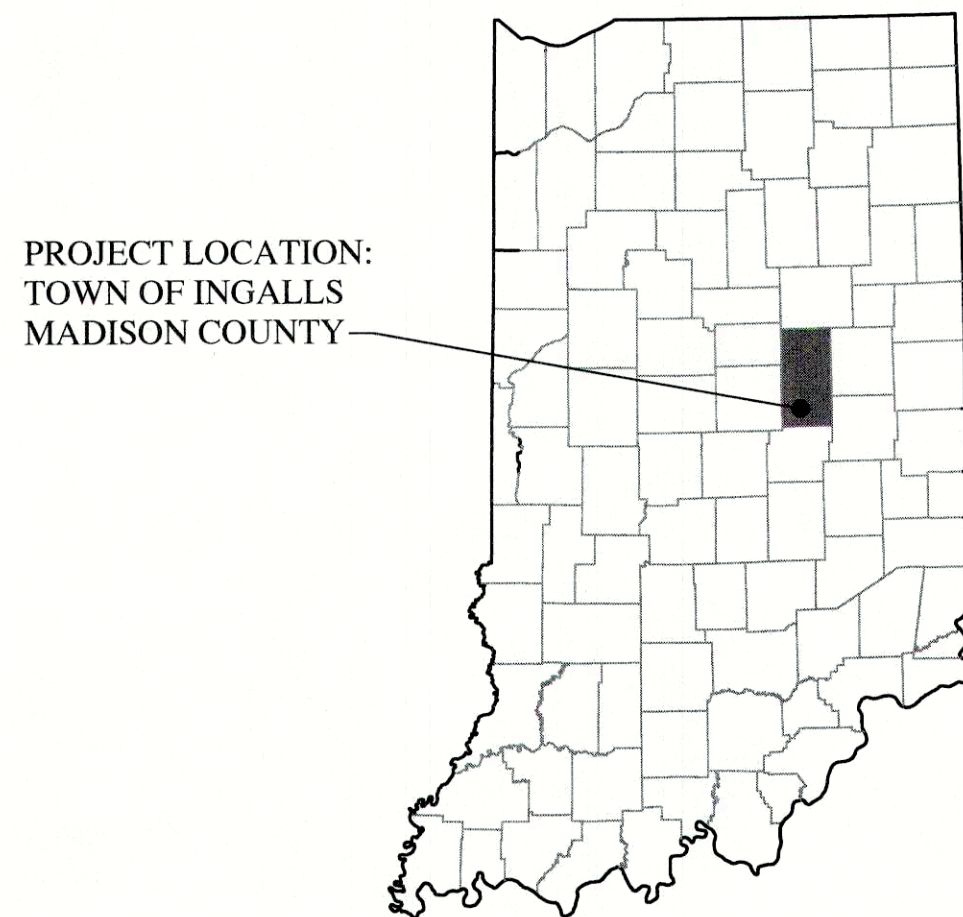
SUBDIVISION ELECTRICAL DISTRIBUTION COORDINATION DUKE ENERGY 100 S. MILL CREEK ROAD NOBLESVILLE, IN 46062 JESSI HERRINGTON: 317-776-5365 jherrington@duke-energy.com	SANITARY: FALL CREEK REGIONAL WASTE DISTRICT P.O. BOX 59 PENDLETON, IN 46084 TIM MCCORDY: 765-778-7544 tmccordy@fcrwd.com	WATER: TOWN OF INGALLS P.O. BOX 277 INGALLS, IN 46048 RANDY MCVAY: 317-485-4321 rjmcvay@aquamerica.com
GAS: VECTREN 600 INDUSTRIAL DRIVE FRANKLIN, IN 46131 KIMBERLY BURTON-KELLY (317) 736-2915 kbkelly@vectren.com	STORM SEWER: TOWN OF INGALLS 227 N. SWAIN ST. INGALLS, IN 46048 CONTACT: 317-485-4321	
TELEPHONE: NINE STAR CONNECT (FORMERLY HANCOCK TELECOM) 2243 E. MAIN ST. GREENFIELD, IN 46140 JENNIFER MCILLIAN: 317-323-2090 jmcillian@ninstarconnect.com		

OVERALL GENERAL PROJECT NOTES:

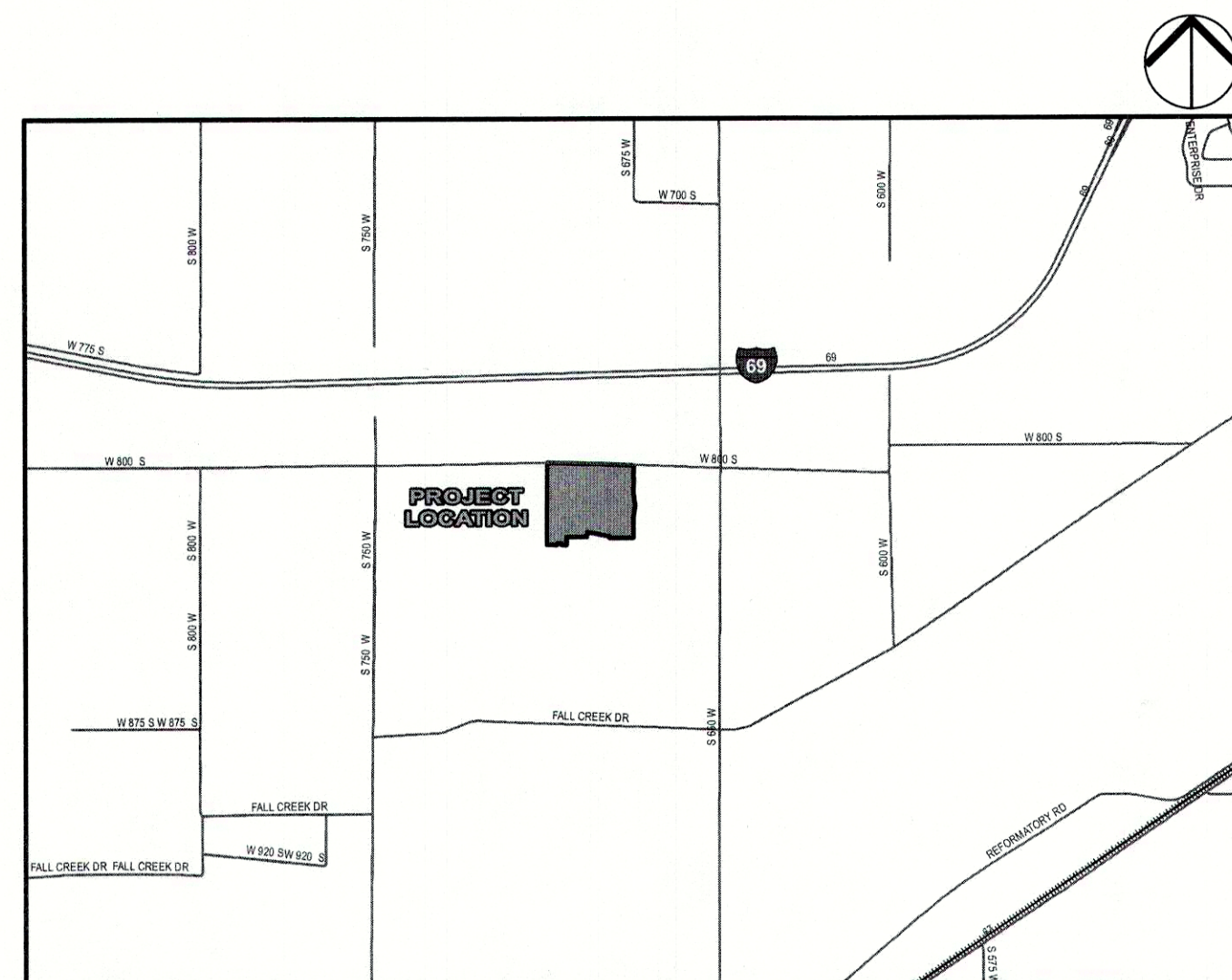
- NOT ALL GAS, POWER, OR TELEPHONE LINES, WHETHER ABOVE OR BELOW GROUND, HAVE BEEN SHOWN ON THE DRAWINGS. ANY UNDERGROUND INFORMATION SHOWN ON THE DRAWINGS HAS BEEN DETERMINED FROM THE BEST AVAILABLE INFORMATION AND IS GIVEN FOR THE CONTRACTOR'S BENEFIT. THE CONTRACTOR SHALL ASSUME ALL RESPONSIBILITY FOR PROTECTING ALL UTILITIES IN HIS WORK AREA WHETHER SHOWN OR NOT, AND MUST REALIZE THAT THE ACTUAL LOCATION OF THE UTILITIES MAY BE DIFFERENT FROM THAT SHOWN ON THE DRAWINGS. ALL EXISTING UTILITIES ENCOUNTERED IN THE WORK, WHETHER IN PUBLIC RIGHTS OF WAY OR ON PRIVATE PROPERTY, SHALL BE THE CONTRACTOR'S RESPONSIBILITY TO MAINTAIN IN SERVICE ANY UTILITIES WHICH CAN BE REMOVED DURING CONSTRUCTION WITHOUT UNDUE INTERRUPTION TO SERVICE MAY BE REMOVED AND REPLACED BY THE CONTRACTOR WITH THE PERMISSION OF THE UTILITY. IF MINOR CONFLICTS ARISE, THE CONTRACTOR MAY SHIFT THE PROPOSED LOCATION OF THE INSTALLATION OF THE WORK. BEFORE WORKING WITH OR AROUND UTILITIES, THE APPLICABLE UTILITY COMPANY SHALL BE NOTIFIED BY THE CONTRACTOR.
- SAFETY PROVISIONS FOR THE WORK SHALL BE IN FULL COMPLIANCE WITH ALL APPLICABLE RULES AND REGULATIONS OF THE INDIANA OSHA AND ANY OTHER LOCAL STATE OR FEDERAL AGENCY HAVING JURISDICTION. IN ACCORDANCE WITH GENERALLY ACCEPTED CONSTRUCTION PRACTICES, THE CONTRACTOR WILL BE SOLELY AND COMPLETELY RESPONSIBLE FOR CONDITIONS OF THE JOB SITE, INCLUDING SAFETY OF ALL PERSONS AND PROPERTY DURING PERFORMANCE OF THE WORK. TRAFFIC CONTROL SHALL CONFORM TO THE REQUIREMENTS OF THE LATEST EDITION OF THE INDIANA MANUAL ON UNIFORM TRAFFIC CONTROL DEVICES FOR STREETS AND HIGHWAYS, AND THE INDIANA DEPARTMENT OF TRANSPORTATION STANDARD SPECIFICATIONS, SPECIAL PROVISIONS, STANDARD INSTRUCTIONS TO FIELD EMPLOYEES. THE REQUIREMENT WILL APPLY CONTINUOUSLY AND NOT TO BE LIMITED TO NORMAL WORKING HOURS. THE OPTION OF THE OWNER AND/OR ENGINEER TO CONDUCT CONSTRUCTION REVIEW OF THE CONTRACTOR'S PERFORMANCE IS NOT INTENDED TO INCLUDE REVIEW OF THE ADEQUACY OF THE CONTRACTOR'S SAFETY MEASURES, IN, ON OR NEAR THE CONSTRUCTION SITE. CONTRACTOR WILL BE RESPONSIBLE FOR PROVIDING AND MAINTAINING ALL BARRICADES, FENCES, WARNING SIGNS, FLASHING LIGHTS, TEMPORARY WALKWAYS, AND TRAFFIC CONTROL DURING CONSTRUCTION. CONTRACTOR TO COMPLY WITH ALL OSHA REGULATIONS, REQUIREMENTS, SAFETY MEETING REQUIREMENTS AND AGENCY REQUIREMENTS FOR TRAFFIC CONTROL AND SAFETY PRECAUTIONS, THERE WILL BE NO SEPARATE OR ADDITIONAL PAYMENT FOR THIS WORK.
- WHERE PROPERTY MARKERS, SECTION CORNERS, SURVEY MARKS OR BENCHMARKS, SUCH AS STONES, PIPES, OR OTHER SUCH MONUMENTS ARE ENCOUNTERED AND CONFLICT WITH THE WORK, THE ENGINEER SHALL BE NOTIFIED BEFORE THEY ARE DISTURBED. THE MARKERS SHALL BE PROTECTED AFTER THE OWNER, ENGINEER, AND AUTHORIZED SURVEYOR OR AGENT HAS WITNESSED OR REFERENCED THEIR LOCATIONS.
- ALL MATERIALS DENOTED "SALVAGED" SHALL BE STORED AND PROTECTED AT THE SITE FOR THE OWNER TO COLLECT OR FOR THE CONTRACTOR TO RE-USE AS INDICATED.
- THERE SHALL BE NO CHANGES WITHOUT WRITTEN APPROVAL OF ENGINEER.
- PLANS AND SPECIFICATIONS REFERENCE ARCHITECT, ENGINEER AND LANDSCAPE ARCHITECT INTERCHANGEABLY THROUGHOUT.

SITE ADDRESS:

6737 COUNTY ROAD W. 800 S.
INGALLS, INDIANA 46048



AREA LOCATION MAP: STATE OF INDIANA
SCALE: NONE



SITE LOCATION MAP: TOWN OF INGALLS, MADISON COUNTY
SCALE: 1" = 2,640'

BENCHMARK INFORMATION:

ORIGINATING BENCHMARK: INDOT 48-G-0055
A BRONZE PLATE IN THE NORTH END OF THE EAST SIDEWALK OF CR 850 W BRIDGE (STR 169-15-05323, NBI 36070) OVER I-69. ALSO 16 FEET SOUTH OF THE NORTH END OF THE BRIDGE.
ELEV = 880.30 (NGVD 29)
ELEV = 879.87 (NAVD 88)

TBM #1
SOUTHWEST UPPER BONNET BOLT
50 FEET SOUTH OF CL 800 SOUTH & 15 FEET WEST OF CL 850 WEST
ELEV = 870.36 (NAVD 88)

TBM #2
SOUTHWEST UPPER BONNET BOLT
670 FEET SOUTH OF CL 800 SOUTH & 15 FEET WEST OF CL 850 WEST
ELEV = 866.74 (NAVD 88)

TBM #3
SOUTHWEST UPPER BONNET BOLT
1665 FEET SOUTH OF CL 800 SOUTH & 17 FEET WEST OF CL 850 WEST
ELEV = 866.25 (NAVD 88)

TBM #4
SOUTHWEST UPPER BONNET BOLT
1290 FEET NORTH OF CL FALL CREEK DRIVE & 17 FEET WEST OF CL 850 WEST
ELEV = 864.08 (NAVD 88)

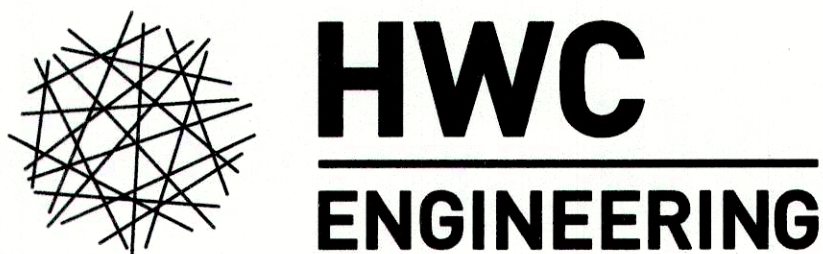
VERTICAL DATUM INFORMATION:

NAVD 88

LEGAL DESCRIPTION:

Part of the Northwest Quarter of Section 25, Township 18 North, Range 6 East of the Second Principal Meridian in Madison County, Indiana, described as follows:

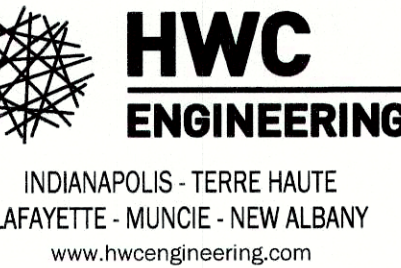
COMMENCING at the XXXX corner of said XXXX Quarter, said corner marked by a [Monument Description]; thence South 01 degrees 58 minutes 09 seconds West a distance of 196.73 feet; thence South 88 degrees 01 minutes 51 seconds East a distance of 9.71 feet; thence South 01 degrees 58 minutes 09 seconds West a distance of 206.69 feet; thence South 07 degrees 30 minutes 07 seconds East a distance of 77.49 feet; thence South 07 degrees 55 minutes 19 seconds East a distance of 70.00 feet; thence South 04 degrees 20 minutes 03 seconds East a distance of 48.06 feet; thence South 06 degrees 17 minutes 44 seconds West a distance of 210.33 feet; thence South 00 degrees 48 minutes 54 seconds West a distance of 295.20 feet; thence North 89 degrees 28 minutes 23 seconds West a distance of 355.95 feet; thence North 00 degrees 31 minutes 37 seconds East a distance of 21.11 feet; thence North 81 degrees 09 minutes 30 seconds West a distance of 170.86 feet; thence North 08 degrees 50 minutes 30 seconds East a distance of 14.90 feet; thence North 81 degrees 09 minutes 30 seconds West a distance of 170.00 feet; thence South 08 degrees 50 minutes 30 seconds West a distance of 78.98 feet; thence North 89 degrees 28 minutes 23 seconds West a distance of 307.35 feet; thence South 00 degrees 31 minutes 37 seconds West a distance of 120.00 feet; thence North 89 degrees 28 minutes 23 seconds West a distance of 55.00 feet; to the point of curvature of a curve to the right having a radius of 25.00 feet; thence northwesterly along said curve on arc distance of 39.27 feet, said curve being subtended by a long chord having a bearing of North 44 degrees 28 minutes 23 seconds West a chord distance of 35.36 feet; thence North 81 degrees 28 minutes 23 seconds West a distance of 50.00 feet; to the point of curvature of a non-tangent curve to the right having a radius of 25.00 feet; thence southwesterly along said curve on arc distance of 39.27 feet, said curve being subtended by a long chord having a bearing of South 45 degrees 31 minutes 37 seconds West a chord distance of 35.36 feet; thence North 89 degrees 28 minutes 23 seconds West a distance of 141.00 feet; thence North 00 degrees 31 minutes 37 seconds East a distance of 1247.68 feet; thence South 88 degrees 01 minutes 51 seconds East a distance of 922.42 feet; thence South 88 degrees 01 minutes 51 seconds East a distance of 381.70 feet to the point of beginning, containing 33.877 acres, more or less.



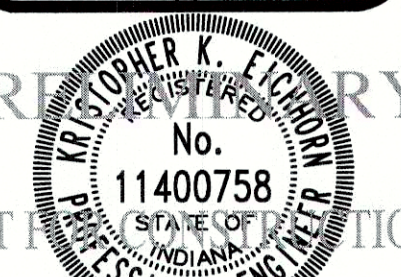
INDIANAPOLIS - TERRE HAUTE
LAFAYETTE - MUNCIE - NEW ALBANY
www.hwcengineering.com

REVISIONS

DATE	DESCRIPTION	BY



MAPLE TRAILS SECTION 6
INGALLS, INDIANA
COVER



DRAWN BY TD/GM	JOB NUMBER 2017-095-E
CHECKED BY KE	
DATE SEPTEMBER 17, 2021	
SCALE AS SHOWN	

SHEET
C1.0
COVER