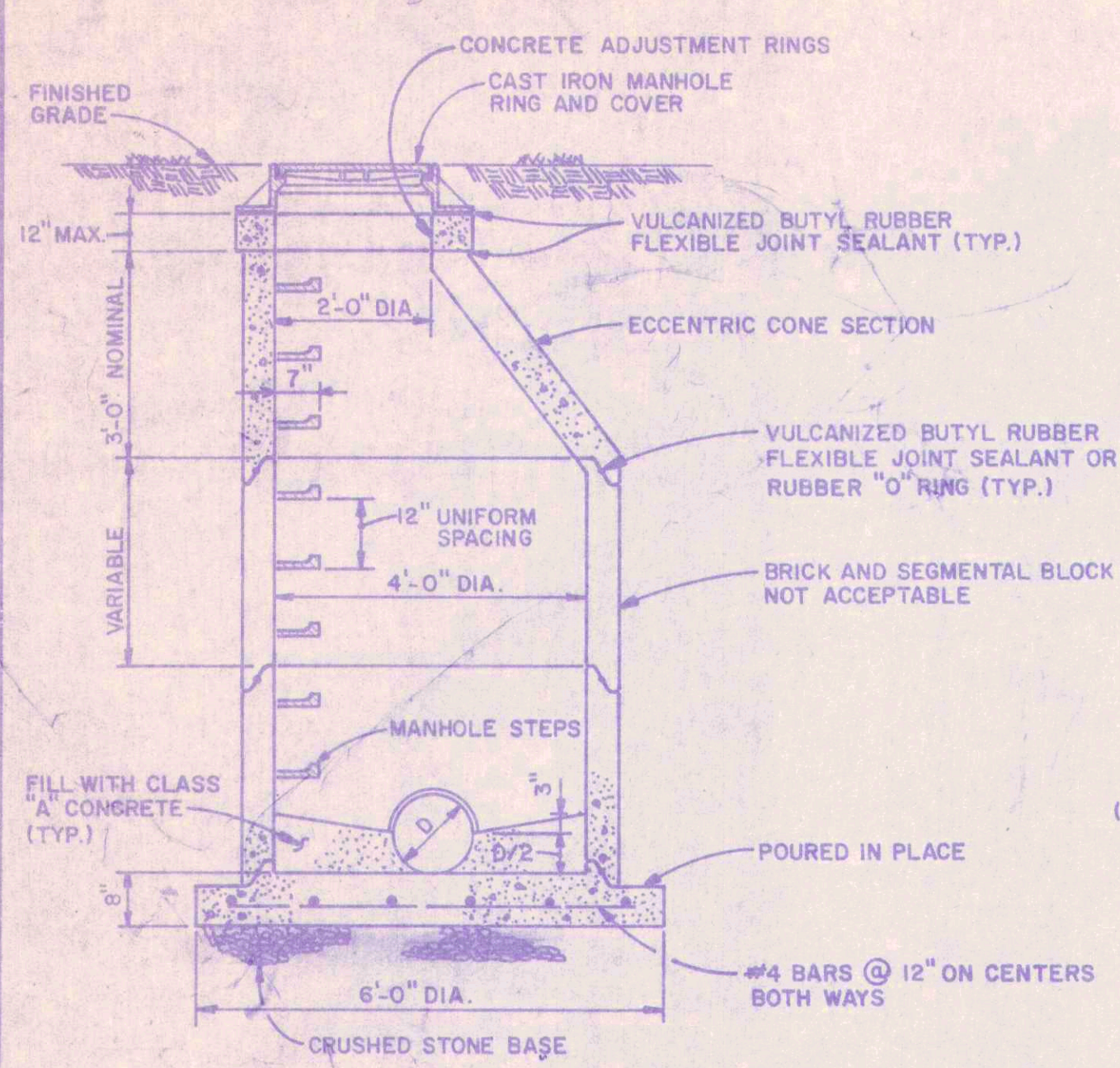


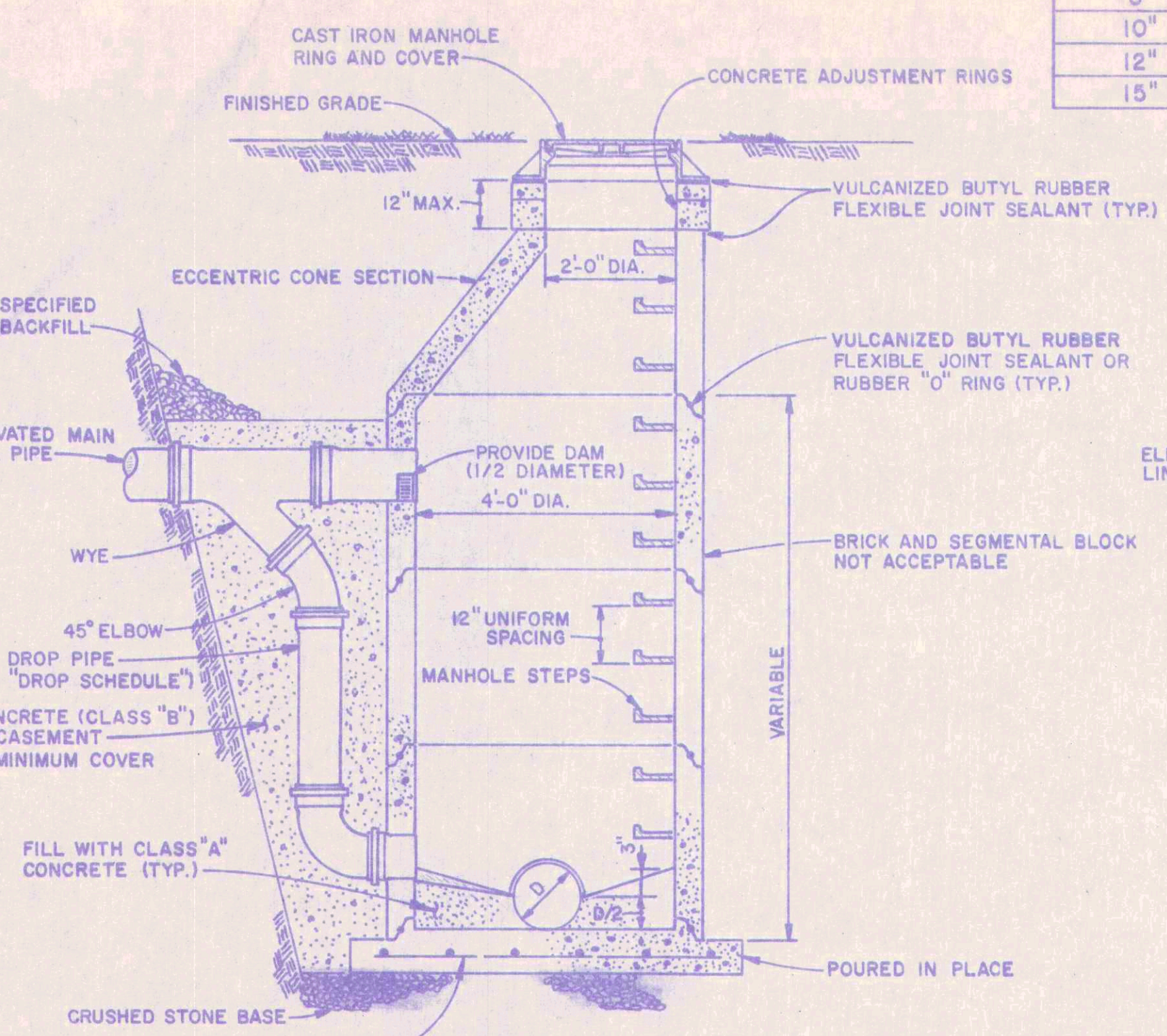
DROP PIPE SCHEDULE			
ELEV. MAIN	DROP PIPE	ELEV. MAIN	DROP PIPE
8"	6"	18"	12"
10"	8"	21"	15"
12"	10"	24"	18"
15"	12"	30"	18"

GENERAL NOTES

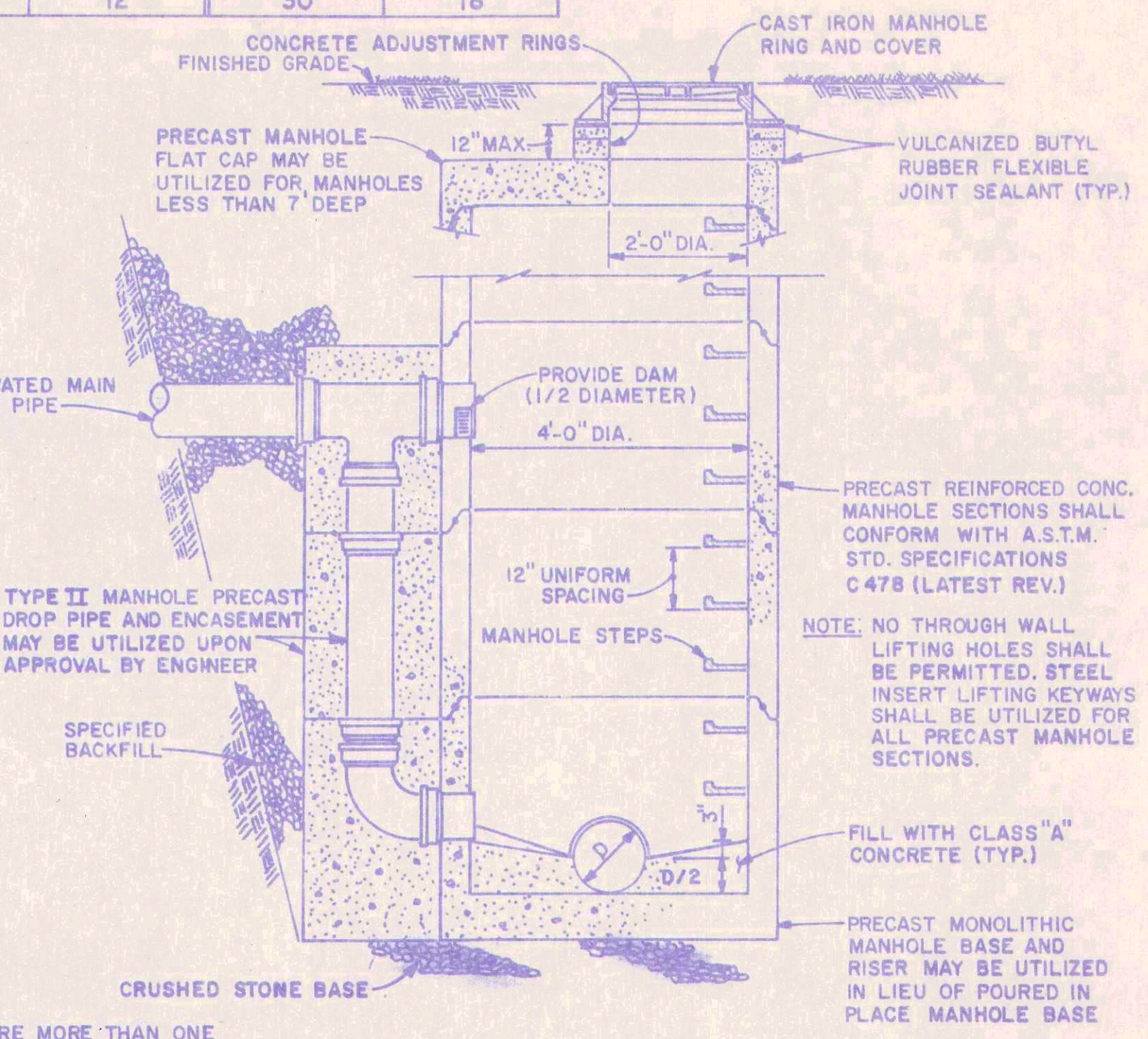
- ALL MATERIALS AND WORKMANSHIP SHALL CONFORM TO THE LATEST A.S.T.M. SPECIFICATIONS.
- CONTRACTOR MUST RESTORE ALL PUBLIC AND PRIVATE FACILITIES DISTURBED DURING CONSTRUCTION TO THEIR ORIGINAL OR BETTER CONDITION.
- ALL HOUSE CONNECTIONS SHALL BE 6" DIA. SEWER PIPE.
- THE CONTRACTOR SHALL INCLUDE IN HIS "IN PLACE" COST FOR SEWERS, WHATEVER COSTS ARE NECESSARY FOR EXCAVATING, BACKFILLING, SHEETING, SHORING, BRACING, CLEARING OR OTHER PROCEDURES REQUIRED TO INSTALL THE SEWERS IN THE LOCATIONS SHOWN AND WITHIN AVAILABLE R/W.
- PARTICULAR ATTENTION MUST BE PAID TO SIDE DITCH DRAINAGE DURING FINAL GRADING TO INSURE PROPER SURFACE DRAINAGE FOR THE AREA.
- UTILITIES INDICATED ON THE DRAWINGS ARE LOCATED TO THE BEST INFORMATION AVAILABLE WHERE CONSTRUCTION TAKES PLACE NEAR ANY UTILITY. THE CONTRACTOR SHALL HAVE THE UNDERGROUND UTILITY FIELD LOCATED BEFORE STARTING WORK.
- EXISTING CULVERTS REMOVED DURING CONSTRUCTION MAY BE RE-USED UPON ENGINEERS INSPECTION AND APPROVAL; **NEW CULVERT PIPE SHALL BE USED WHEN IN STATE HIGHWAY OR COUNTY RIGHT OF WAY.**
- MANHOLE ADJUSTMENT RINGS TO BE ADJUSTED TO MATCH FINAL GROUND OR PAVEMENT GRADE UNLESS OTHERWISE NOTED ON PLANS.
- MANHOLE BOTTOMS SHALL BE FORMED TO PROVIDE CHANNELS CONFORMING IN SIZE AND SHAPE TO THE INCOMING AND OUTGOING SEWERS WITH SMOOTH CHANNEL INVERTS SLOPED AND FILLETED IN A MANNER TO PREVENT DEPOSITION OF SOLIDS IN THE MANHOLE.
- WHEN MAIN SEWER DIAMETER IS 24" TO 33", THE INSIDE DIAMETER OF THE MANHOLE BASE SHALL BE 60" MINIMUM.



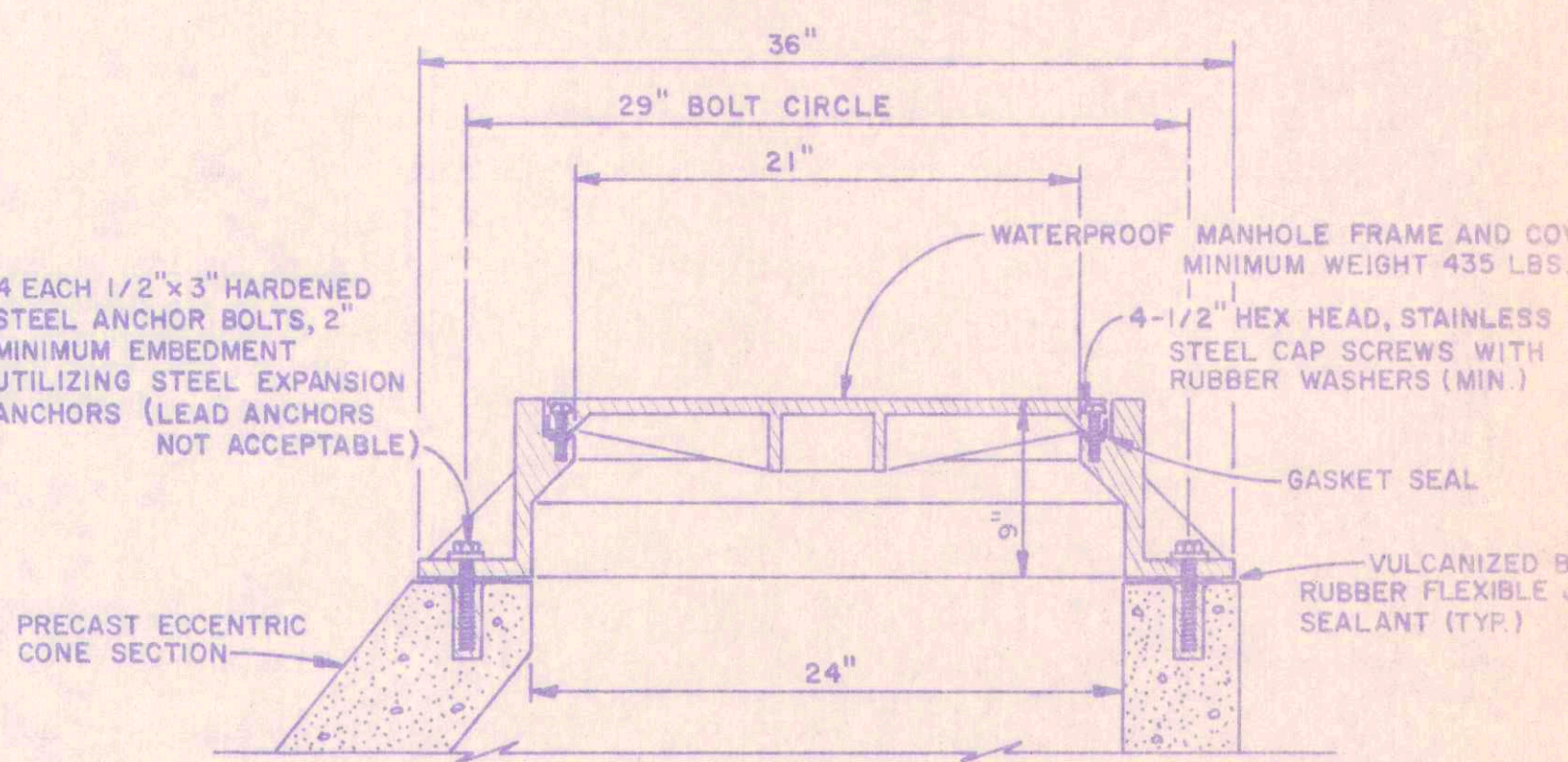
**TYPE I
STANDARD MANHOLE FOR SEWERS
21" OR LESS IN DIAMETER**



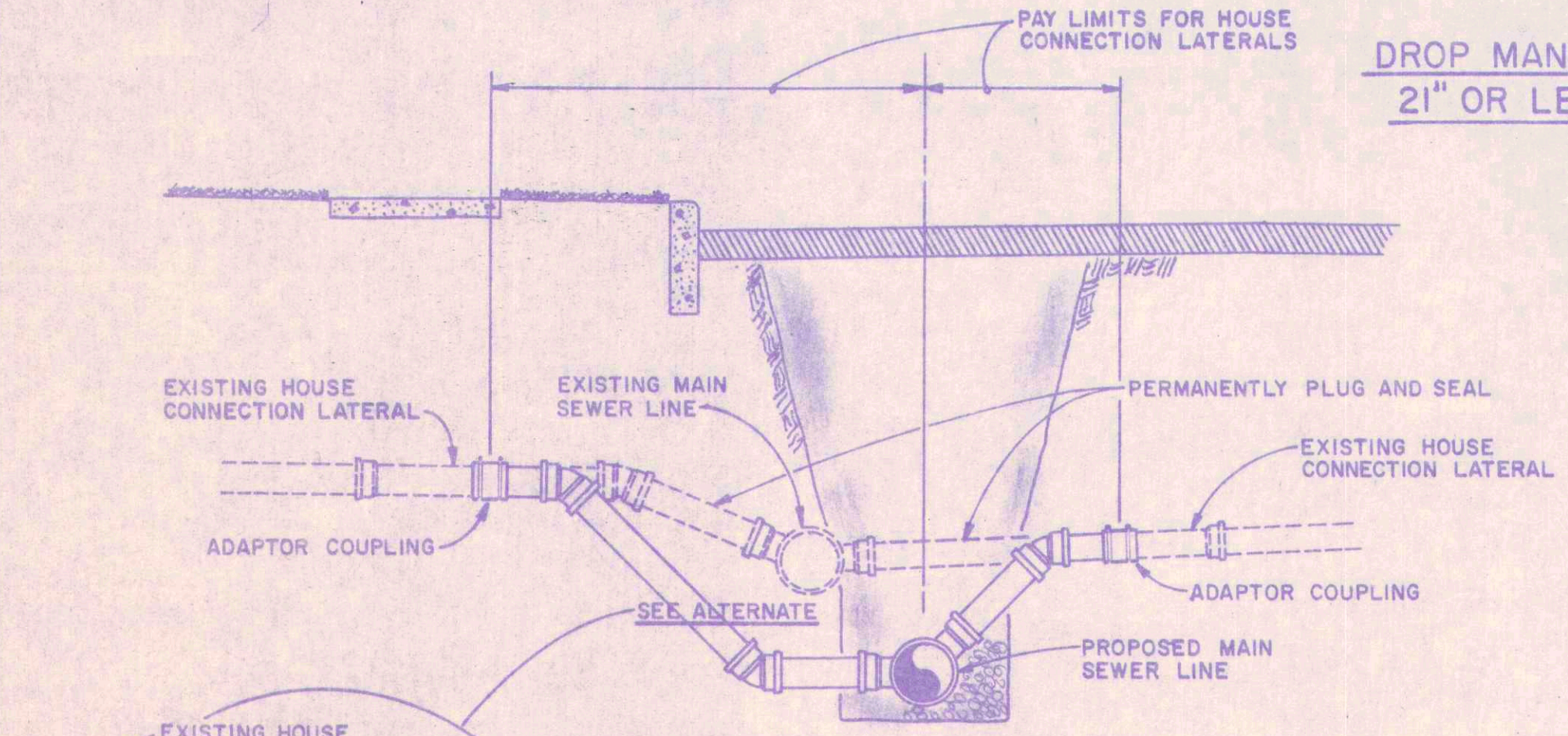
**TYPE II
DROP MANHOLE FOR SEWERS
21" OR LESS IN DIAMETER**



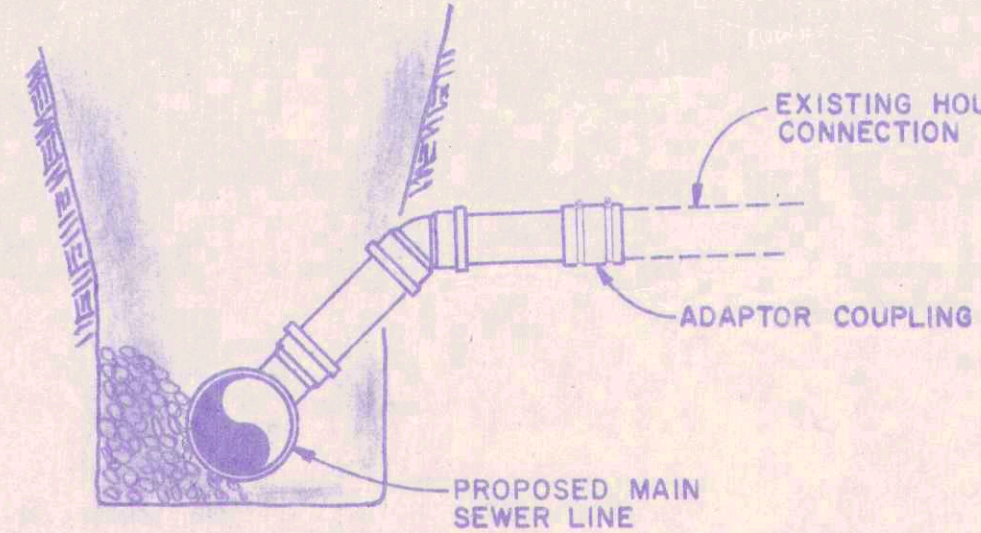
**TYPE II
PRECAST DROP MANHOLE FOR SEWERS
21" OR LESS IN DIAMETER**



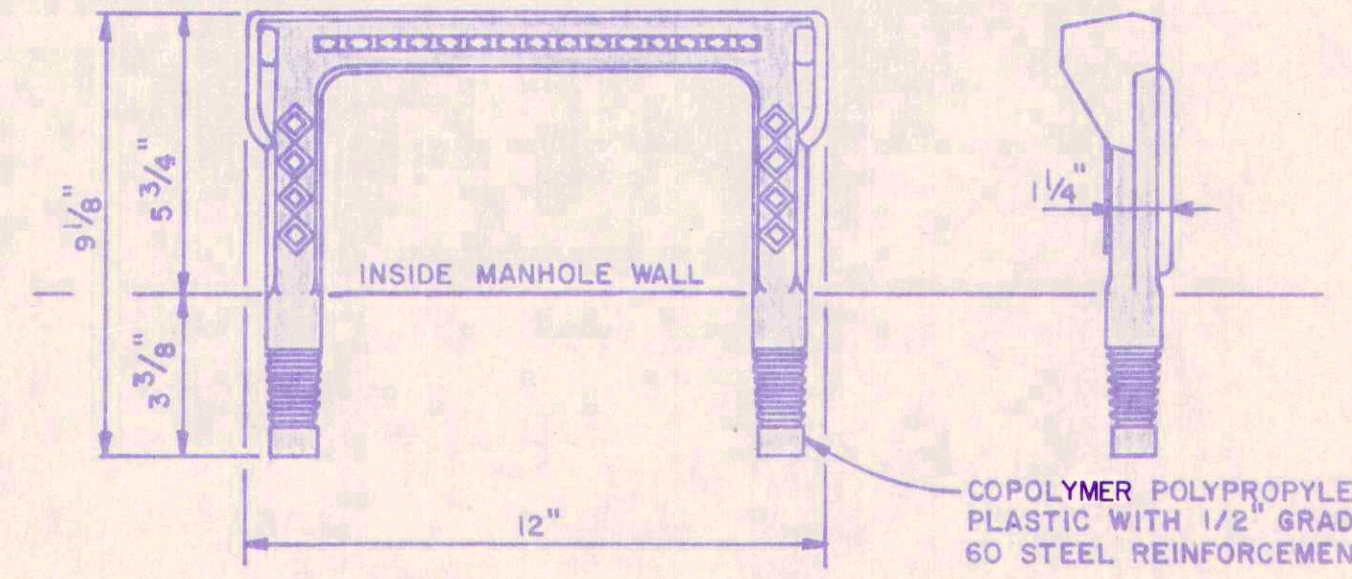
FLOODPROOF MANHOLE DETAIL



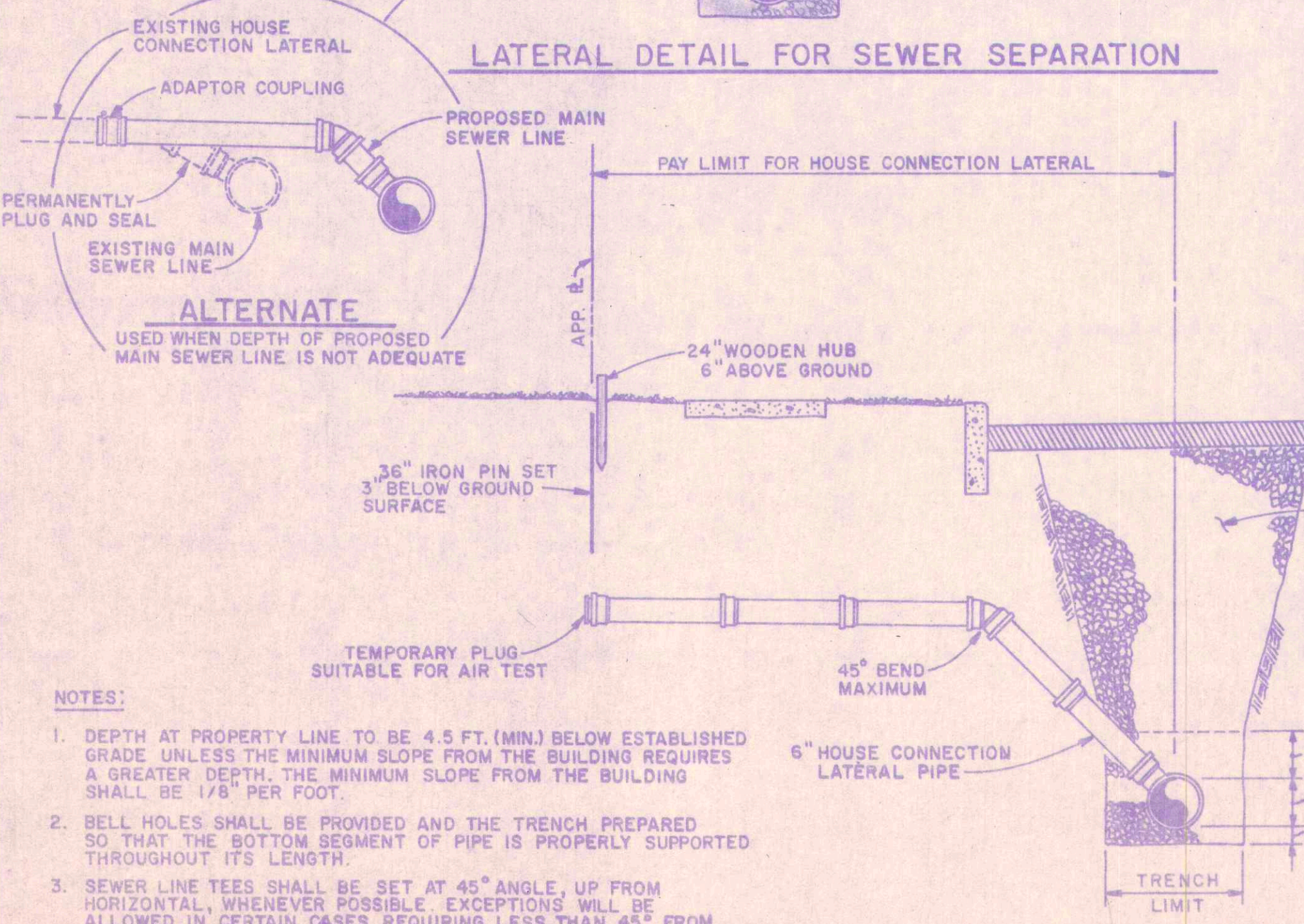
LATERAL DETAIL FOR SEWER SEPARATION



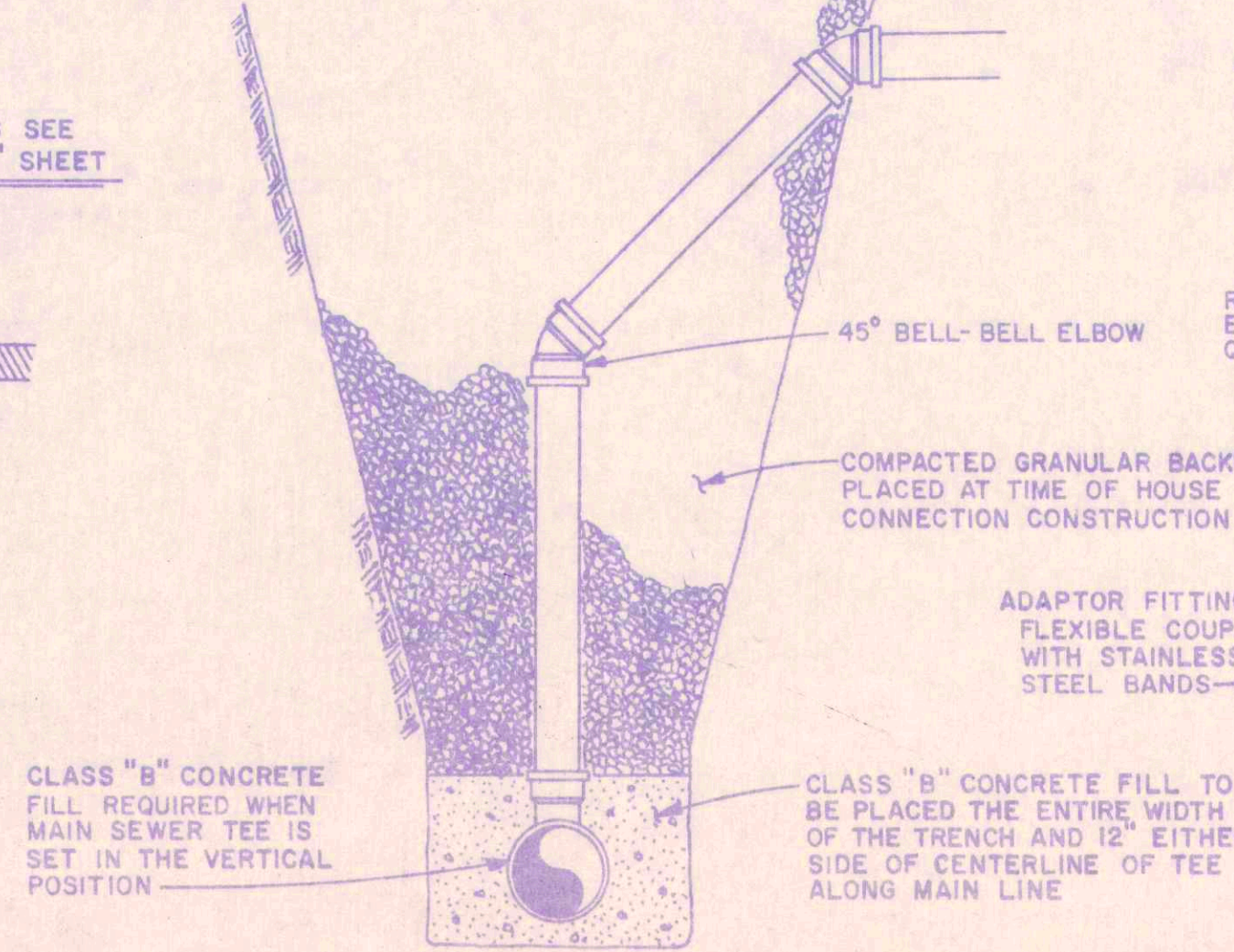
**LATERAL DETAIL MAIN SEWER
REMOVE AND REPLACE**



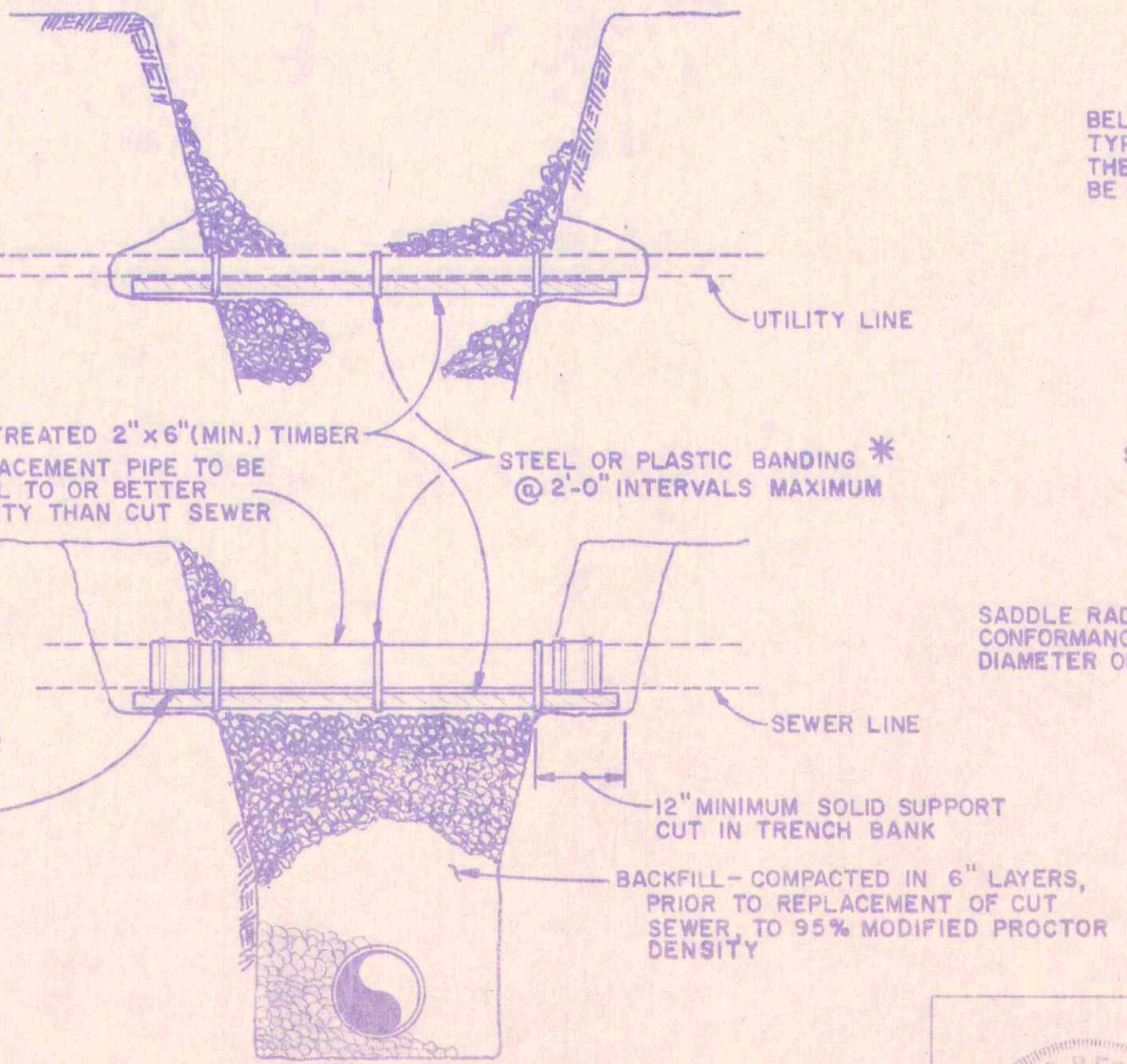
MANHOLE STEP DETAIL



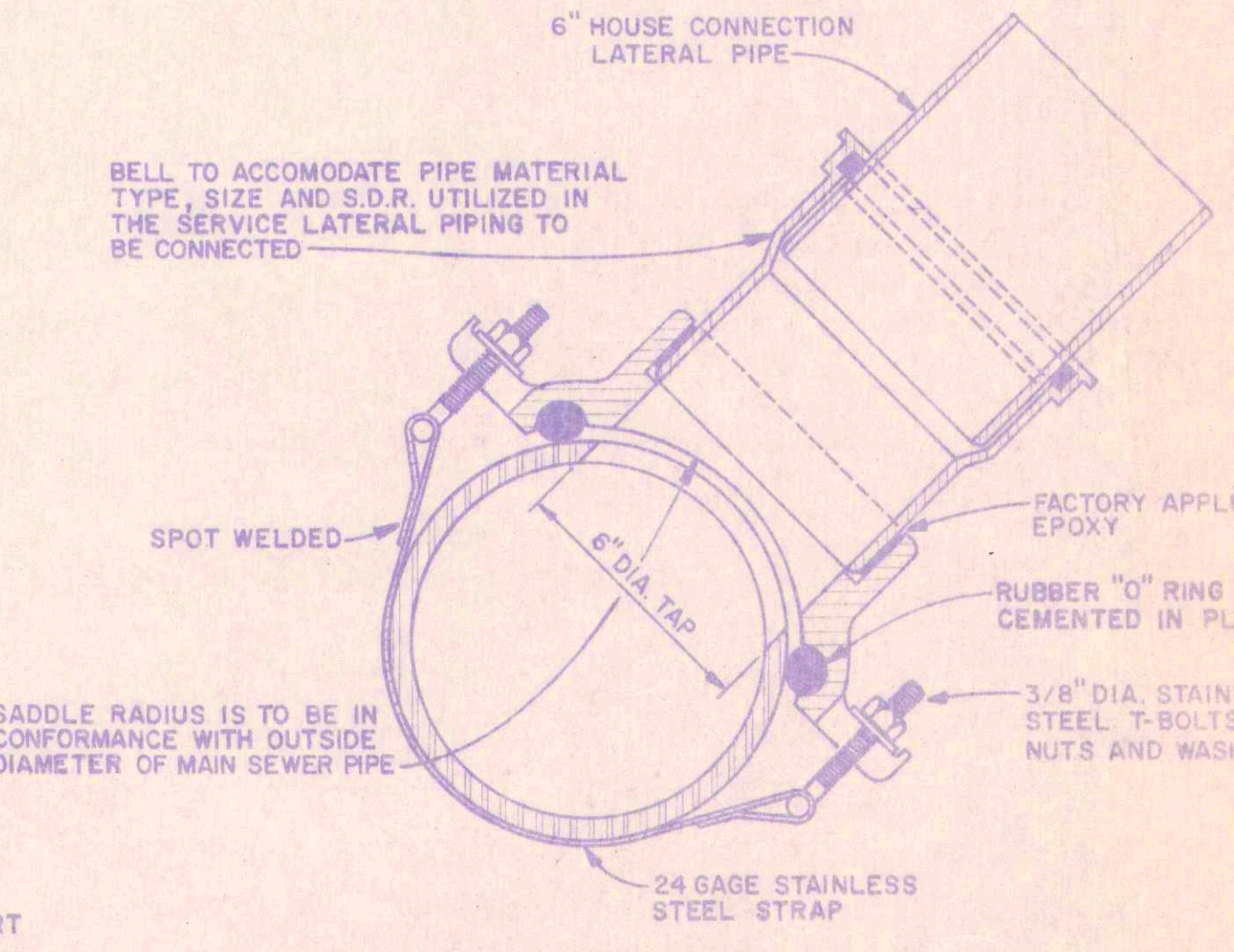
TYPICAL LATERAL DETAIL



LATERAL DETAIL FOR DEEP SEWERS



**DETAIL FOR REPAIR AND SUPPORT
OF EXPOSED UTILITIES AND SEWERS**



SEWER PIPE SADDLE DETAIL

- NOTES:**
- DEPTH AT PROPERTY LINE TO BE 4.5 FT. (MIN.) BELOW ESTABLISHED GRADE UNLESS THE MINIMUM SLOPE FROM THE BUILDING REQUIRES A GREATER DEPTH. THE MINIMUM SLOPE FROM THE BUILDING SHALL BE 1/8" PER FOOT.
 - BELL HOLES SHALL BE PROVIDED AND THE TRENCH PREPARED SO THAT THE BOTTOM SEGMENT OF PIPE IS PROPERLY SUPPORTED THROUGHOUT ITS LENGTH.
 - SEWER LINE TEES SHALL BE SET AT 45° ANGLE, UP FROM HORIZONTAL, WHENEVER POSSIBLE. EXCEPTIONS WILL BE ALLOWED IN CERTAIN CASES REQUIRING LESS THAN 45° FROM HORIZONTAL. TEE PLACEMENT (e.g. SHALLOW MAIN LINE SEWERS, LESS THAN 6 FEET DEEP) (e.g. NEW HOUSE CONNECTIONS MUST GO UNDER EXISTING SEWER).
 - DEPTH OF HOUSE LATERAL AT PROPERTY LINE SHALL BE SUFFICIENT TO SERVE EXISTING DRAINS IN BASEMENTS AND OTHER EXISTING DEEP HOUSE DRAINS AND WHEN REQUESTED BY HOMEOWNER.

RECORD DRAWING

SEWER DETAILS

Scale: <i>As Noted</i>	<i>FALL CREEK R.W.D.</i>	Sheet
Drawn By: <i>P.B.</i>	<i>BEAM, LONGEST & NEFF</i>	
Designed By: <i>R.C.</i>	Consulting Engineers 8136 Castleton Road Indianapolis IN 46250	
Certified By: <i>E.R.</i>		

