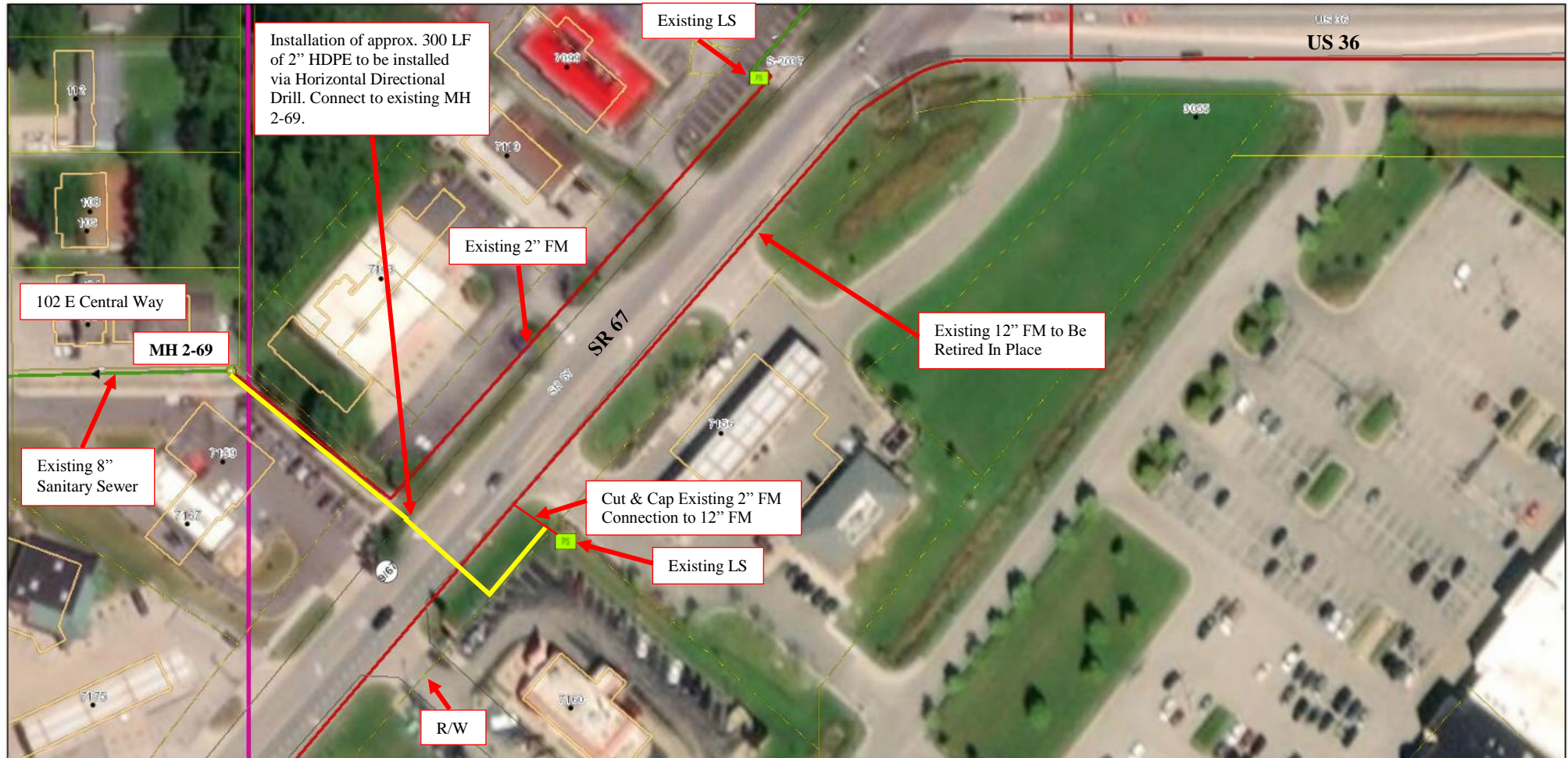


SR 67 Pendleton, IN



8/2/2018, 1:17:56 PM



Not to Scale

Source: Esri, DigitalGlobe, GeoEye, Earthstar Geographics, CNES/Airbus DS, USDA, USGS, AeroGRID, IGN, and the GIS User Community

Fall Creek - Pendleton
GRW Engineers