

STRUCTURE No. FV-10
STANDARD MANHOLE
T.C. = 876.2± 876.87
INV.(S) = 876.28 870.29

STRUCTURE No. FV-9
STANDARD MANHOLE
T.C. = 877.2± 877.15
INV.(N) = 869.08
INV.(S) = 869.06 869.07

STRUCTURE No. FV-8
(SEE SHEET No. 11)

FOR CONTINUATION
SEE SHEET No. 11

FOR CONTINUATION
SEE SHEET No. 11

STRUCTURE No. FV-8a
(SEE SHEET No. 11)



NOTE:
ADDITIONAL RIGHT-OF-WAY OR EASEMENTS MAY
NEED TO BE ACQUIRED FOR INSTALLATION OF SEWER.

DON'T DIG BLIND
CALL BEFORE YOU DIG
TOLL FREE
1-800-382-5544
OFFICE HOURS
1-800-428-5200

PER INDIANA STATE LAW IS-69-1991, IT IS
AGAINST THE LAW TO EXCAVATE WITHOUT
NOTIFYING THE UNDERGROUND LOCATION SERVICE
TWO (2) WORKING DAYS BEFORE COMMENCING WORK.

NOTE: CONTRACTOR TO VERIFY ALL UTILITY LOCATIONS
PRIOR TO THE START OF CONSTRUCTION

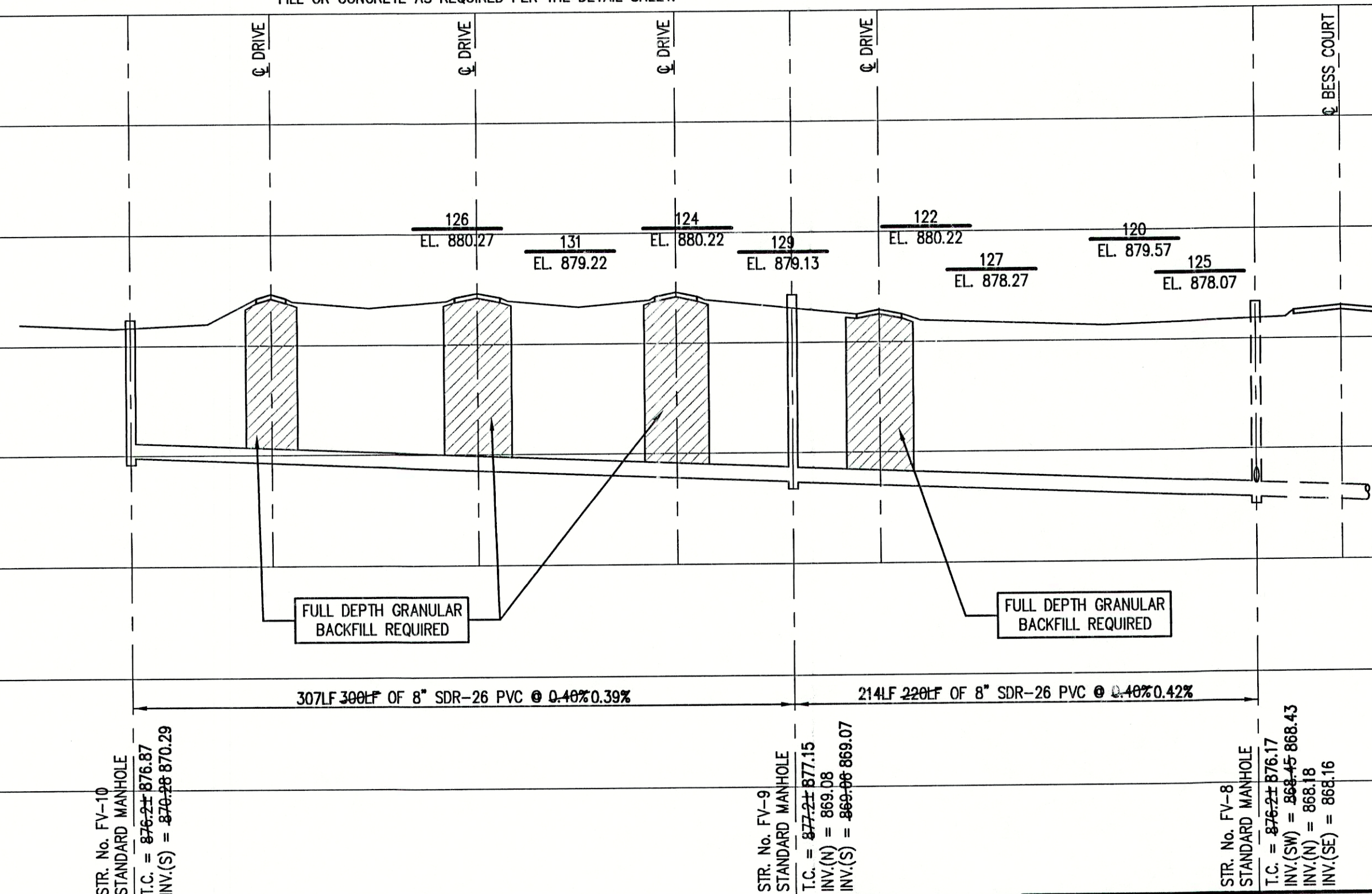
GENERAL NOTES:

- ALL UTILITY LOCATIONS ARE APPROXIMATE. THE CONTRACTOR SHALL HAVE ALL UTILITIES FIELD VERIFIED AND MARKED PRIOR TO CONSTRUCTION.
- CONTRACTOR SHALL MAINTAIN A MINIMUM 10'-0" HORIZONTAL AND 18" VERTICAL SEPARATION BETWEEN SEWER AND WATER MAINS.
- ALL PROPOSED TOP OF CASTING ELEVATIONS ARE APPROXIMATE. THE CONTRACTOR SHALL ADJUST FINAL ELEVATIONS AS REQUIRED TO BE FLUSH WITH PAVEMENT.
- ALL SEWER TRENCHES SHALL BE BACKFILLED WITH FULL DEPTH COMPACTED GRANULAR BACKFILL ("B" BORROW) UNDER OR WITHIN 5' OF EDGE OF PAVEMENT.
- THE CONTRACTOR SHALL VISIT THE SITE PRIOR TO BID TO BECOME FAMILIAR WITH ALL SITE CONDITIONS.
- THE CONTRACTOR SHALL PROVIDE THE REQUIRED MEASURES FOR MAINTAINING SAFE TRAFFIC AT ALL TIMES.
- CONTRACTOR SHALL RESTORE ALL DISTURBED LAWN AREAS, STREETS, WALKS, DRIVES, ETC. AS SHOWN ON DRAWINGS, IN THE SPECIFICATIONS, OR TO AT LEAST PRE-EXISTING CONDITIONS.
- ALL UTILITY CROSSINGS SHALL BE PROTECTED AND SUPPORTED WITH GRANULAR FILL OR CONCRETE AS REQUIRED PER THE DETAIL SHEET.

•	TREE	1085	CONTOUR	— — — — —	UNDERGROUND ELECTRIC LINE
○	POWER POLE	— X — X —	FENCE	— — — — —	UNDERGROUND TELEPHONE LINE
+	GUY WIRE	— — — — —	EXIST. SANITARY SEWER w/ MANHOLE	— — — — —	APPROX. RIGHT-OF-WAY
+	FIRE HYDRANT	— — — — —	NEW SANITARY SEWER w/ MANHOLE	— — — — —	APPROX. CORPORATE LIMITS
○	MAILBOX	— — — — —	NEW SANITARY SERVICE CONNECTION	— — — — —	APPROX. PROPERTY LINE
FP	FLAGPOLE	— — — — —	WATER LINE	— — — — —	EXISTING WATER WELL
X 1085.2	SPOT SHOT	— — — — —	GAS LINE	— — — — —	EXISTING SEPTIC TANK



SCALE:
HORIZONTAL 1" = 50'
VERTICAL 1" = 5'

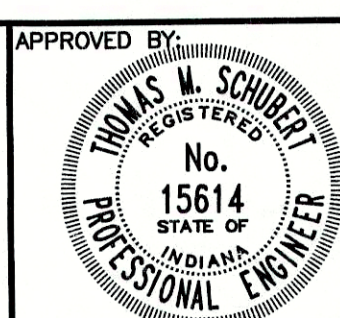


RECORD DRAWING
APRIL 2001

FREEDS VILLAGE SUBDIVISION
FALL CREEK REGIONAL WASTE DISTRICT

PLAN AND PROFILE

DRAWN BY: DAP
DATE: 04/12/98
SCALE: AS NOTED
PROJECT No.: 98008A
SHEET No.: 12
DESIGNED BY: D.A. Pauling
CHECKED BY: James W. Frazell, P.E.
OF 20



Thomas M. Schubert, P.E.

TRIAD ASSOCIATES INC.
INDIANAPOLIS, INDIANA

NO.	DATE	DESCRIPTION	BY
1	12/7	FRVIL_4-REC	

NOTE:

THE CONTRACTOR SHALL INCLUDE IN THE COSTS FOR SANITARY PIPE, ALL WATER SERVICE RECONNECTIONS, STORM SEWER RECONNECTION, WATER MAIN RELOCATIONS, CONCRETE RECONSTRUCTION, AND SIDEWALK RECONSTRUCTION AS REQUIRED TO INSTALL NEW WORK AS SHOWN ON THE DRAWINGS.