

NOTES:

1. FOR LOW-VOLUME SITUATIONS WITH SHORT WORK ZONES ON STRAIGHT ROADWAYS WHERE THE FLAGGER IS VISIBLE TO ROAD USERS APPROACHING FROM BOTH DIRECTIONS, A SINGLE FLAGGER, POSITIONED TO BE VISIBLE TO ROAD USERS APPROACHING FROM BOTH DIRECTIONS, MAY BE USED.
2. THE "ROAD WORK AHEAD" AND THE "END ROAD WORK" SIGNS MAY BE OMITTED FOR SHORT-DURATION OPERATIONS.
3. FLASHING WARNING LIGHTS AND/OR FLAGS MAY BE USED TO CALL ATTENTION TO THE ADVANCE WARNING SIGNS. A "BE PREPARED TO STOP" SIGN MAY BE ADDED TO THE SIGN SERIES.
4. THE BUFFER SPACE SHOULD BE EXTENDED SO THAT THE TWO-WAY TRAFFIC TAPER IS PLACED BEFORE A HORIZONTAL (OR CREST VERTICAL) CURVE TO PROVIDE ADEQUATE SIGHT DISTANCE FOR THE FLAGGER AND A QUEUE OF STOPPED VEHICLES.
5. AT NIGHT, FLAGGER STATIONS SHALL BE ILLUMINATED, EXCEPT IN EMERGENCIES.
6. WHEN USED, THE "BE PREPARED TO STOP" SIGN SHOULD BE LOCATED BETWEEN THE "FLAGGER" SIGN AND THE "ONE LANE ROAD" SIGN.

FOR HIGH SPEED URBAN CONDITIONS *

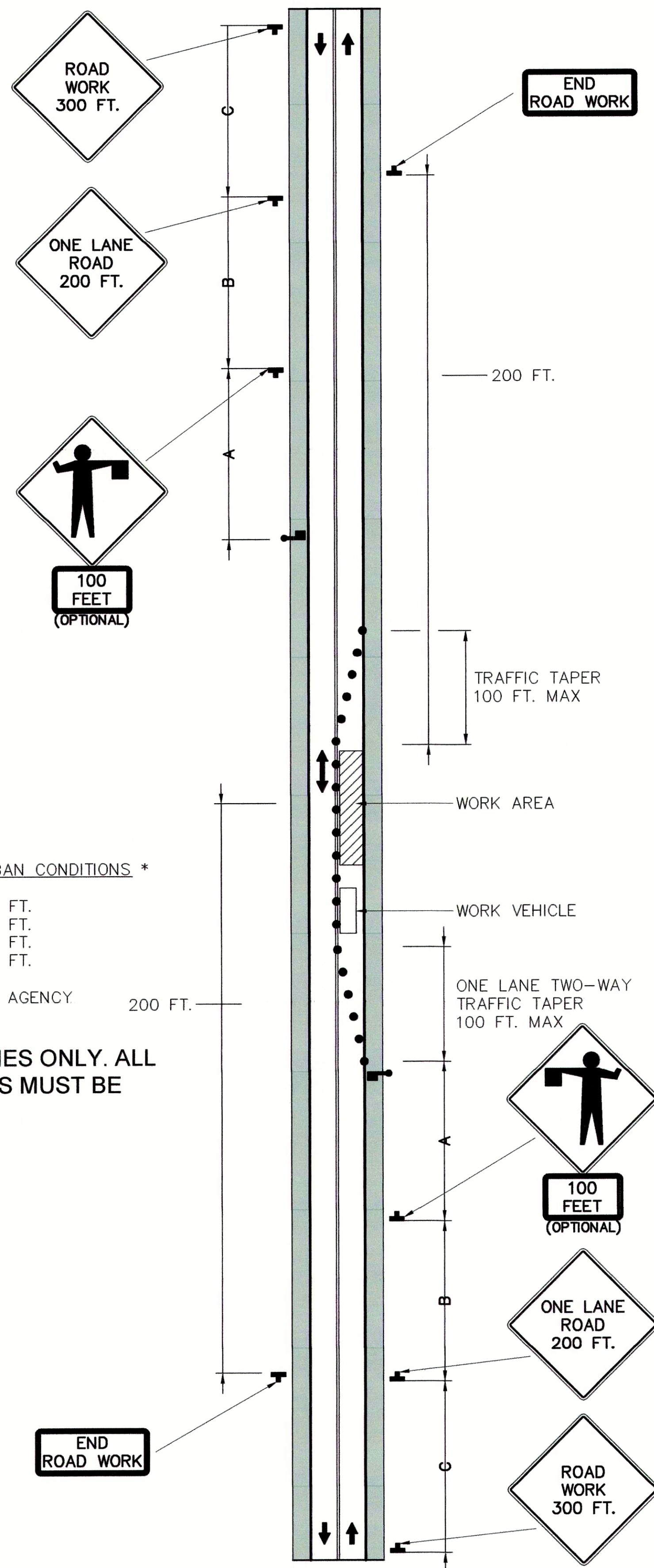
A=350 FT.
B=350 FT.
C=350 FT.
L=350 FT.

FOR LOW SPEED URBAN CONDITIONS *

A=100 FT.
B=100 FT.
C=100 FT.
L=350 FT.

* SPEED CATEGORY SHALL BE DETERMINED BY HIGHWAY AGENCY

NOTE: TRAFFIC CONTROL PLANS ARE GUIDELINES ONLY. ALL TRAFFIC CONTROL PLANS AND LANE CLOSURES MUST BE APPROVED BY THE APPROPRIATE AGENCY.
TOWN OF PENDLETON: (765) 778-2173



DETAIL - TRAFFIC CONTROL PLAN (AT TWO LANE ROAD)

SCALE: N.T.S.

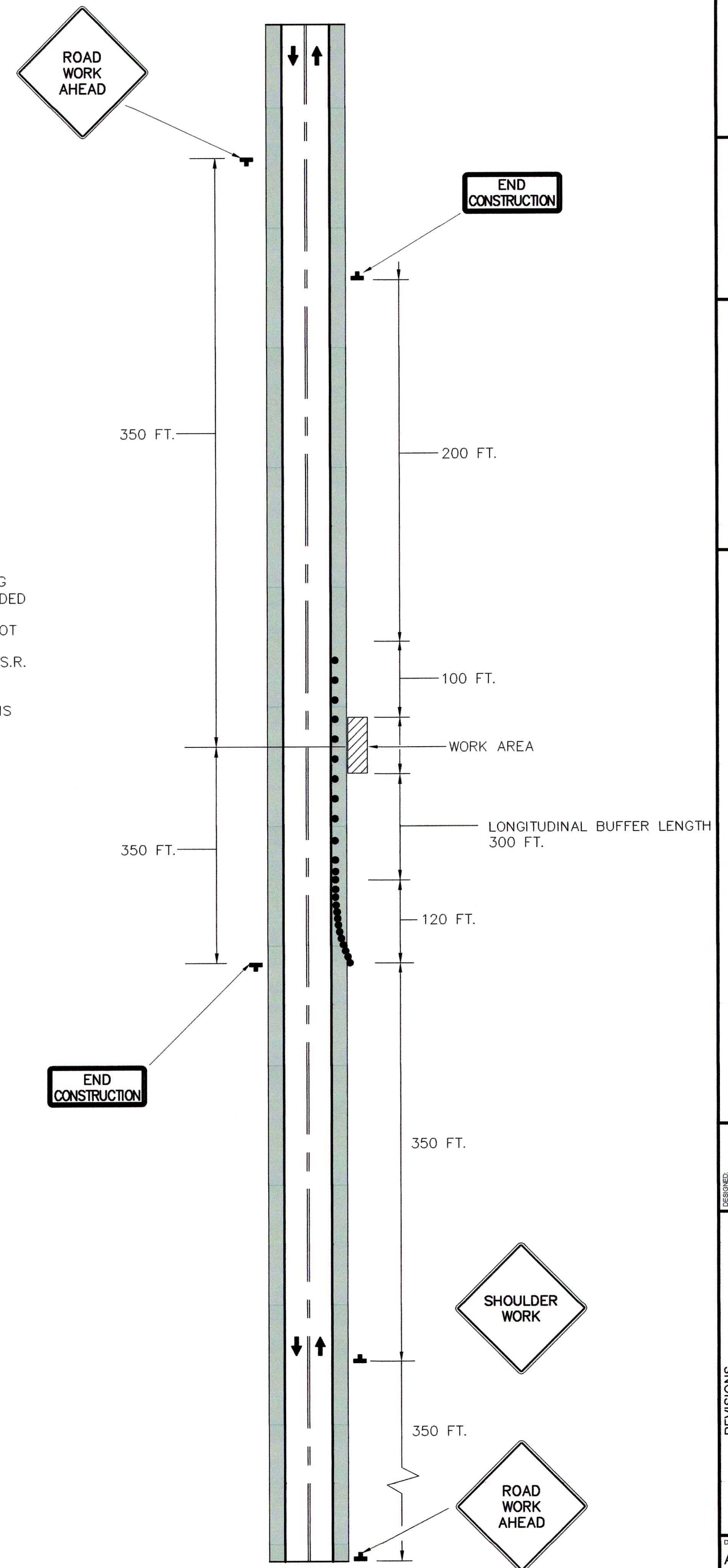
NOTES:

1. FLASHING WARNING LIGHTS AND/OR FLAGS MAY BE USED TO CALL ATTENTION TO THE ADVANCE WARNING SIGNS. A "BE PREPARED TO STOP" SIGN MAY BE ADDED TO THE SIGN SERIES.
2. FOR MORE DETAILED DRAWINGS AND NOTES, SEE INDOT DETAILS E 801-TCLC-07 AND E 801-TCLG-01.
3. THIS IS APPLICABLE TO THE WORK PLANNED ALONG S.R. 67 - POSTED SPEED LIMIT 40 MPH.
4. FOR ALL LOCAL STREET AND ALLEY CLOSURES, SEE INDOT "URBAN DETOUR" DETAIL E 801-TCDT-02 (THIS SHEET) AND DETAIL E 801-TCDT-03.

LEGEND

■	SIGN
●	CHANNELIZING DEVICE

NOTE: TRAFFIC CONTROL PLANS ARE GUIDELINES ONLY. ALL TRAFFIC CONTROL PLANS AND LANE CLOSURES MUST BE APPROVED BY THE APPROPRIATE AGENCY.
LOCAL INDOT: (317) 467-3426
TOWN OF PENDLETON: (765) 778-2173



DETAIL - TRAFFIC CONTROL PLAN FOR SHOULDER WORK
ON TWO-LANE TWO-WAY HIGHWAY

SCALE: N.T.S.

JOSEPH P. TIERNEY REGISTERED No. 19300407 STATE OF INDIANA PROFESSIONAL ENGINEER	
GRW PROJECT NO. 4447-14	SRF NO. WW16074803
ALL RIGHTS RESERVED. PROPERTY OF GRW ENGINEERS, INC. AND SHALL NOT BE REPRODUCED OR USED FOR CONSTRUCTION OF ANY PROJECT WITHOUT WRITTEN PERMISSION.	
GRW engineering architecture geospatial www.grwinc.com	
MAINTENANCE OF TRAFFIC SANITARY SEWER REHABILITATION FALL CREEK REGIONAL WASTE DISTRICT PENDLETON, INDIANA	
DESIGNED: GWL	DRAWN: GCR
REVIEWED: GWL	APPROVED: JPT
DATE: APRIL 2016	SCALE: NOT TO SCALE
SHEET NO. C-19	