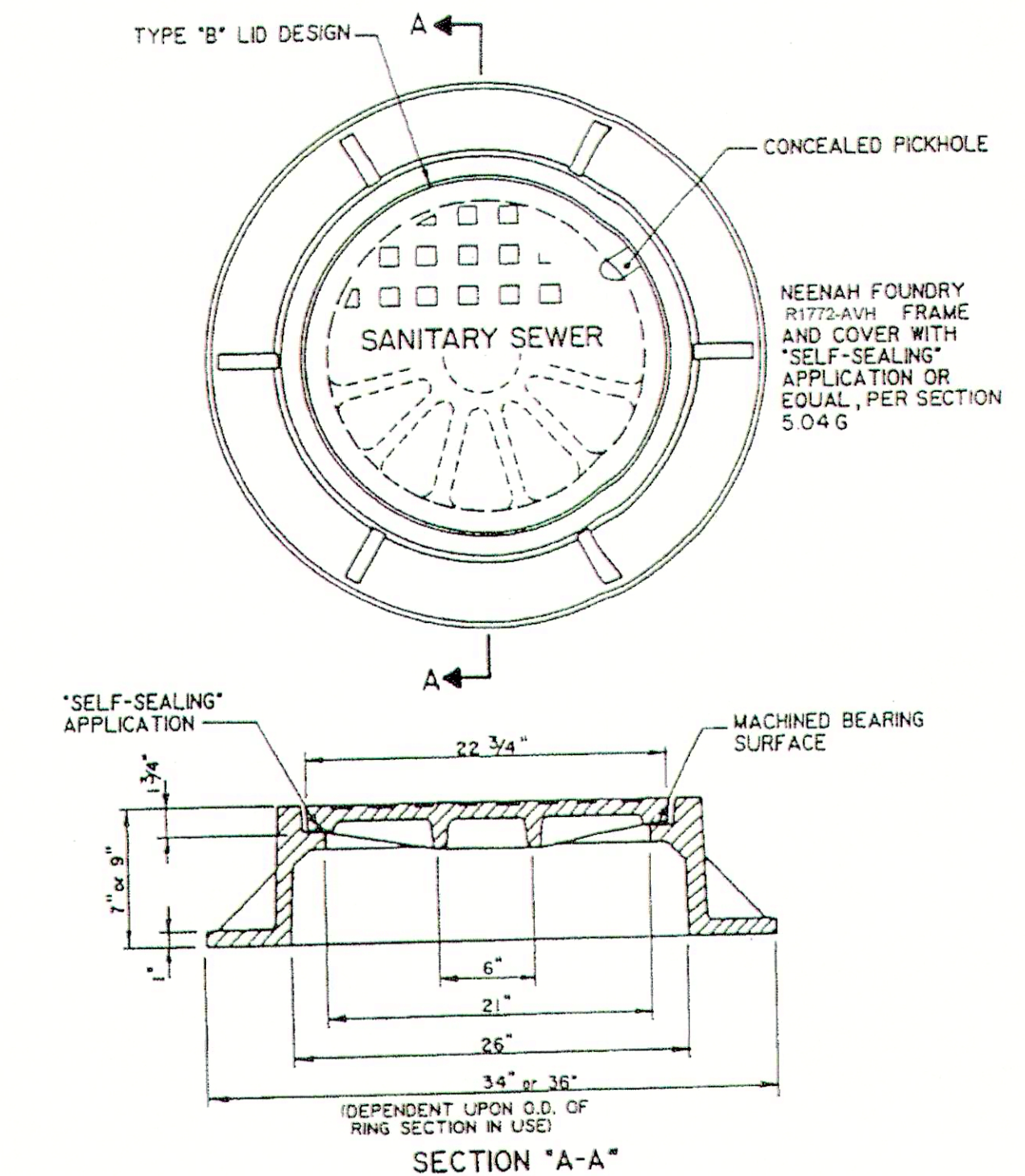


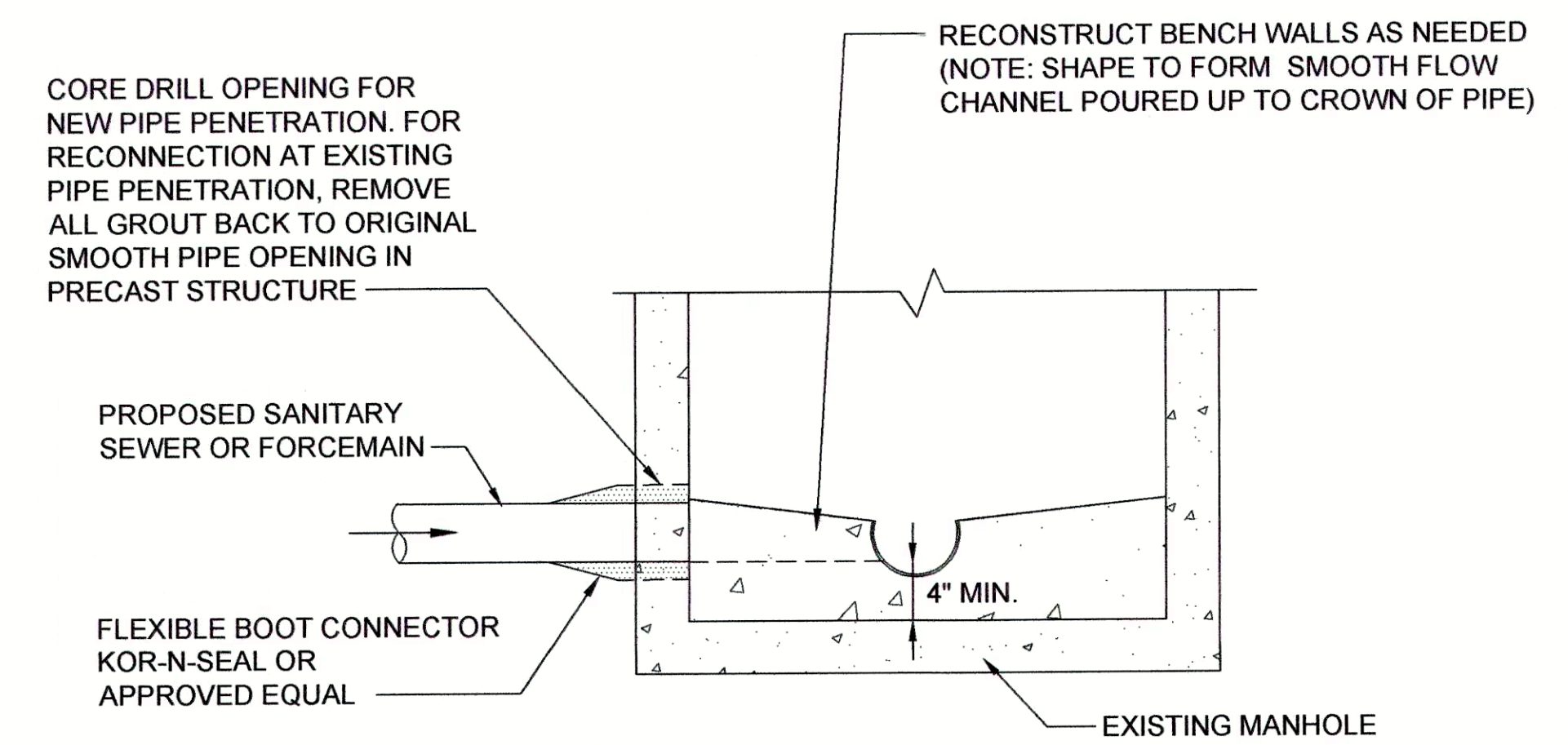
STANDARD MANHOLE FOR PIPE
SIZES 8" - 24" (STRAIGHT THRU)

FIGURE 5-1

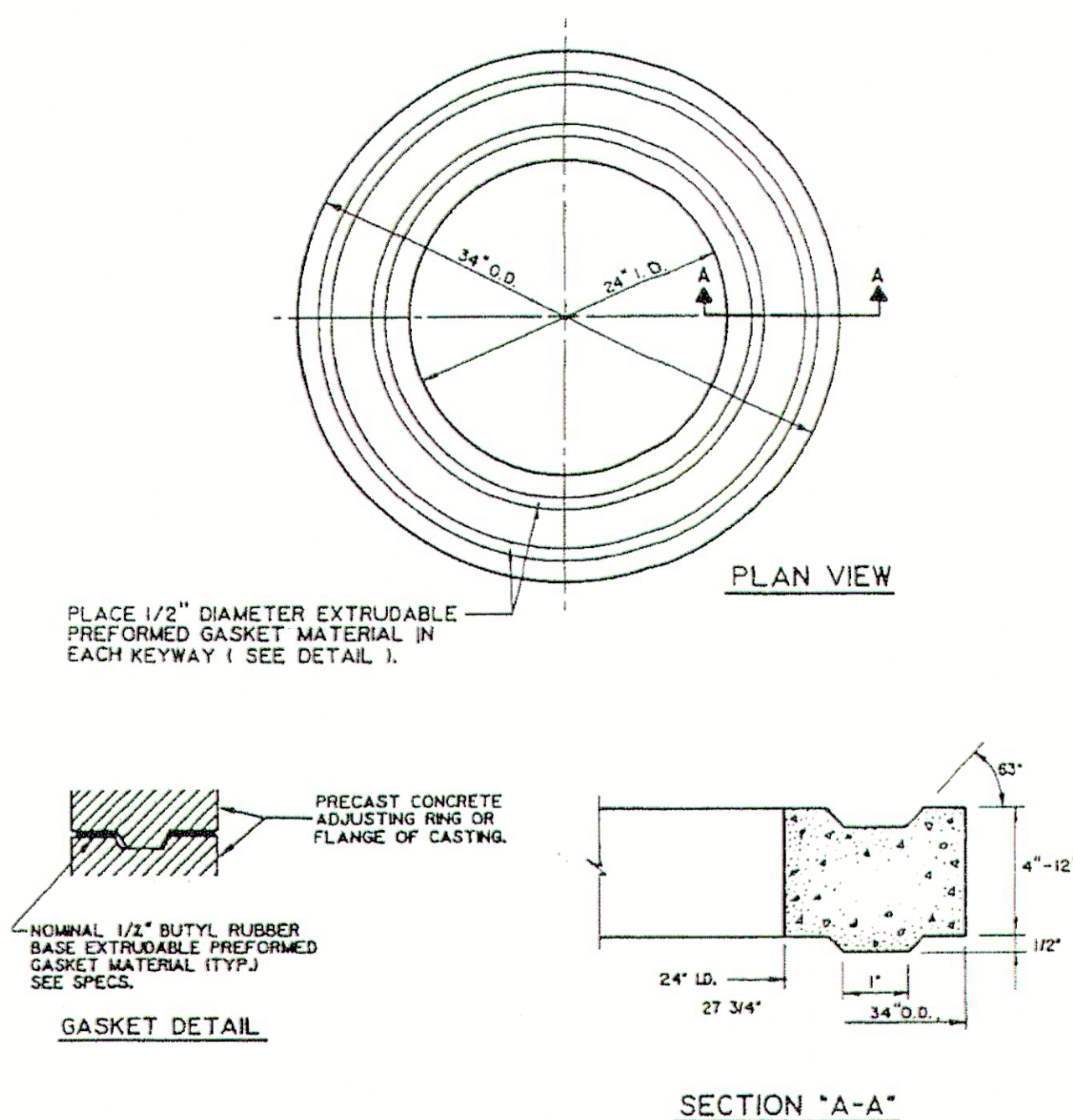


SANITARY SEWER MANHOLE
FRAME & COVER - STANDARD MANHOLE

FIGURE 5-7



EXISTING MANHOLE CONNECTION DETAIL
NOT TO SCALE

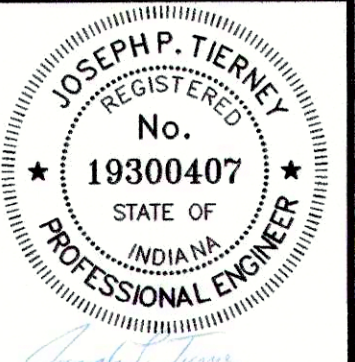


ADJUSTING RING

FIGURE 5-48

SEWER POINT REPAIR NOTES (IF REQUIRED & APPROVED BY OWNER):

1. PRIOR TO CIPP INSTALLATION, CONTRACTOR SHALL PERFORM DIG-UP & REPLACE POINT REPAIR WITH NEW PVC SDR-35 PIPE CONFORMING TO A.S.T.M. D3034 WITH A.S.T.M. 3212 BELL AND SPIGOT RUBBER GASKETED JOINTS. POINT REPAIR SHALL EXTEND A MINIMUM OF ONE FULL PIPE JOINT BEYOND EITHER SIDE OF REPAIR LOCATION, NOT TO EXCEED 10FT. TOTAL LENGTH. JOIN NEW PIPE SECTION WITH EXISTING PIPE USING NON-SHEAR TYPE FERNCO COMPRESSION COUPLINGS; OR EQUAL, MEETING THE REQUIREMENTS OF A.S.T.M. C425 AND SUITABLE FOR THE SERVICE IN WHICH IT IS INTENDED. BANDS SHALL BE SERIES 300 STAINLESS STEEL CONFORMING TO A.S.T.M. A240.
2. REFER TO DETAILS ON SHEET C-16 FOR PIPE BEDDING, BACKFILL, AND SURFACE RESTORATION REQUIREMENTS.
3. SHOULD SEWER POINT REPAIR VARY SIGNIFICANTLY FROM DESCRIPTION ABOVE, ITEM SHALL BE NEGOTIATED THROUGH THE CHANGE ORDER PROCESS.



GRW PROJECT NO. 4447-14
SRF NO. WW0074803



FALL CREEK STANDARD DETAILS
SANITARY SEWER REHABILITATION
FALL CREEK REGIONAL WASTE DISTRICT
PENDLETON, INDIANA

DESIGNED	BY	DATE	DESCRIPTION	REVIEWED	APPROVED
GWL				GCR	JPT

DATE: APRIL 2016
SCALE: N.T.S.
SHEET NO.

C-17