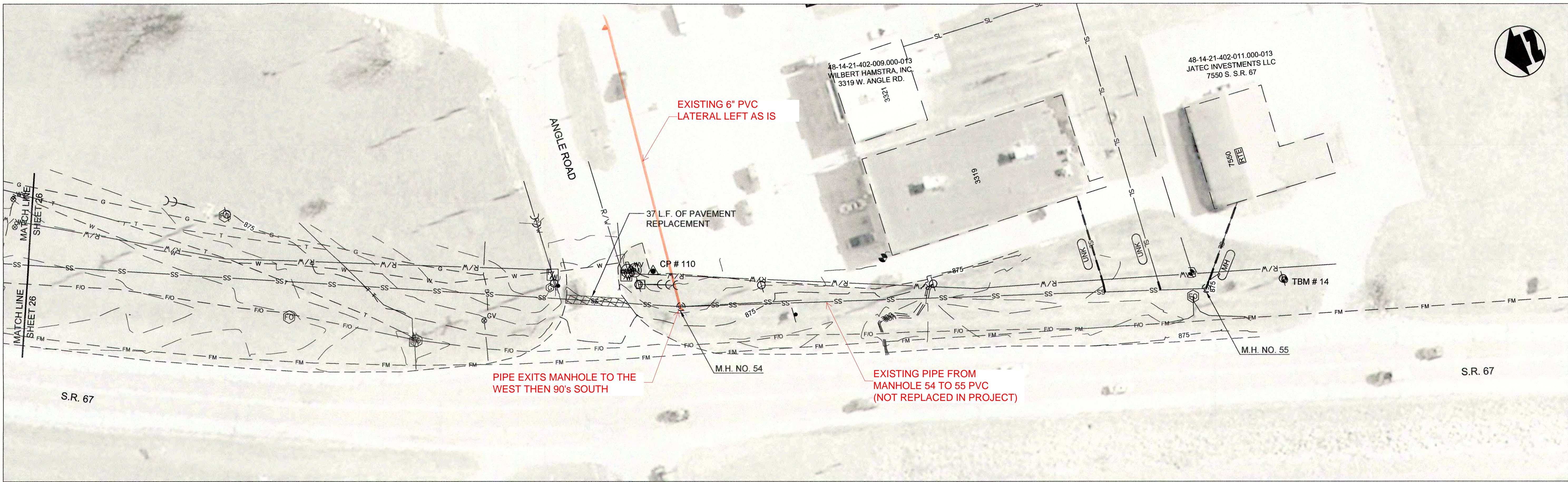
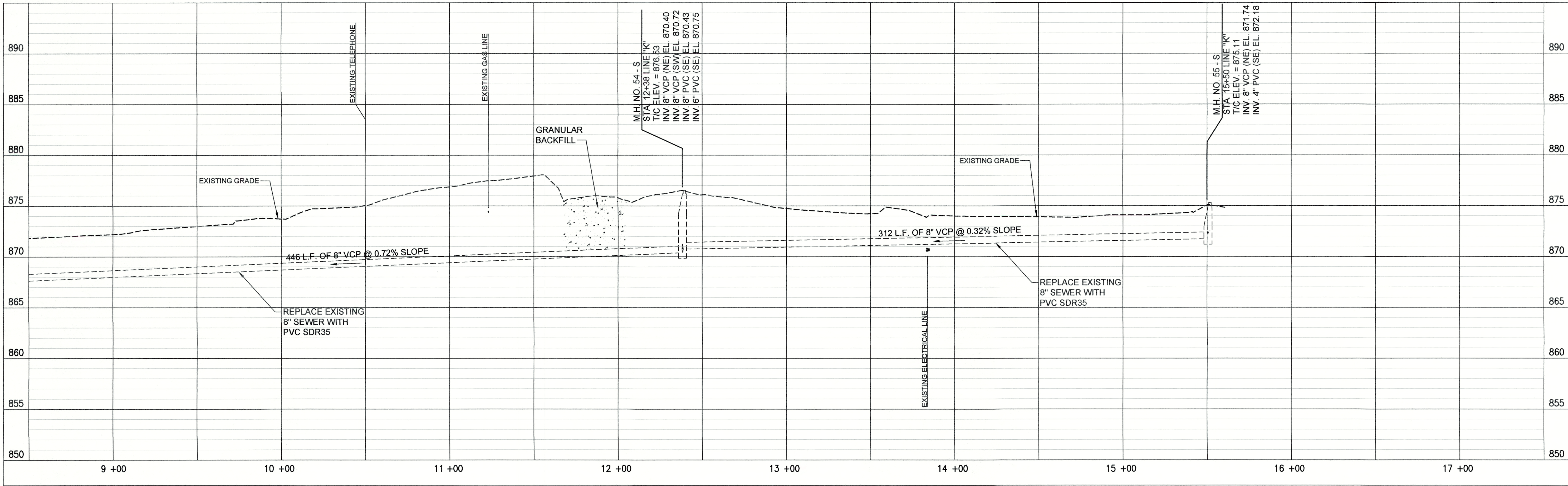


PRINTED: 3/11/2017 @ 3:09PM

FILE NAME: G:\4447-FCRWD-2015\Working Drawings\AutoCAD\REHABILITATION PHASE II\4447-24-C-27.dwg



PLAN VIEW - STA. 8+50 TO STA. 18+55 LINE "K"



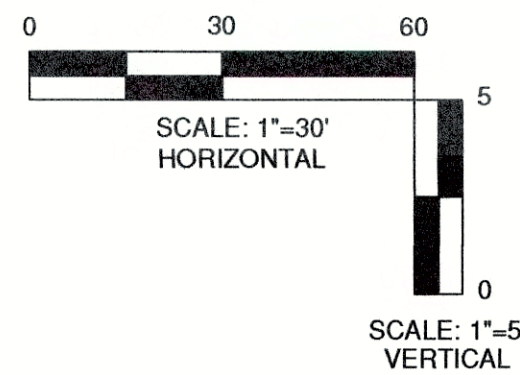
PROFILE - STA. 8+50 TO STA. 18+55 LINE "K"

PROPOSED LEGEND

- | | | | |
|--|-----------------------------|--|----------------------------------|
| | PROPOSED PERMANENT EASEMENT | | PROPOSED SANITARY LATERAL |
| | PROPOSED RIGHT-OF-WAY | | SURFACE RESTORATION AND BACKFILL |
| | PROPOSED SANITARY SEWER | | |

(A) PIPE SEGMENT TO BE ABANDONED

- NOTES:
- LETTERS SHOWN NEXT TO MANHOLE NUMBERS IN THE PROFILE CORRESPOND TO REHABILITATION SCHEDULE ON SHEET C-42.
 - SEE SHEETS C-01 THROUGH C-15 FOR NOTES ON LATERAL REHABILITATION WORK.



GRW PROJECT NO. 4447-24	
SRF NO. WW16074803	
engineering architecture geospatial www.grwinc.com	
PLAN AND PROFILE LINE "K" SEWER REHABILITATION PROJECT PHASE II TOWN OF PENDLETON, INDIANA	
DESIGNED	GWL
DRAWN	GCR
REVIEWED	GWL
APPROVED	JPT
DATE	MARCH 2017
SCALE	H-1"=30', V-1"=5'
SHEET NO.	C-27