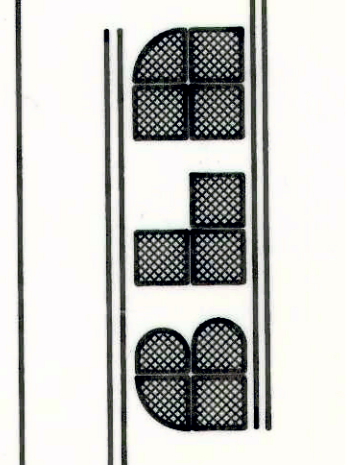


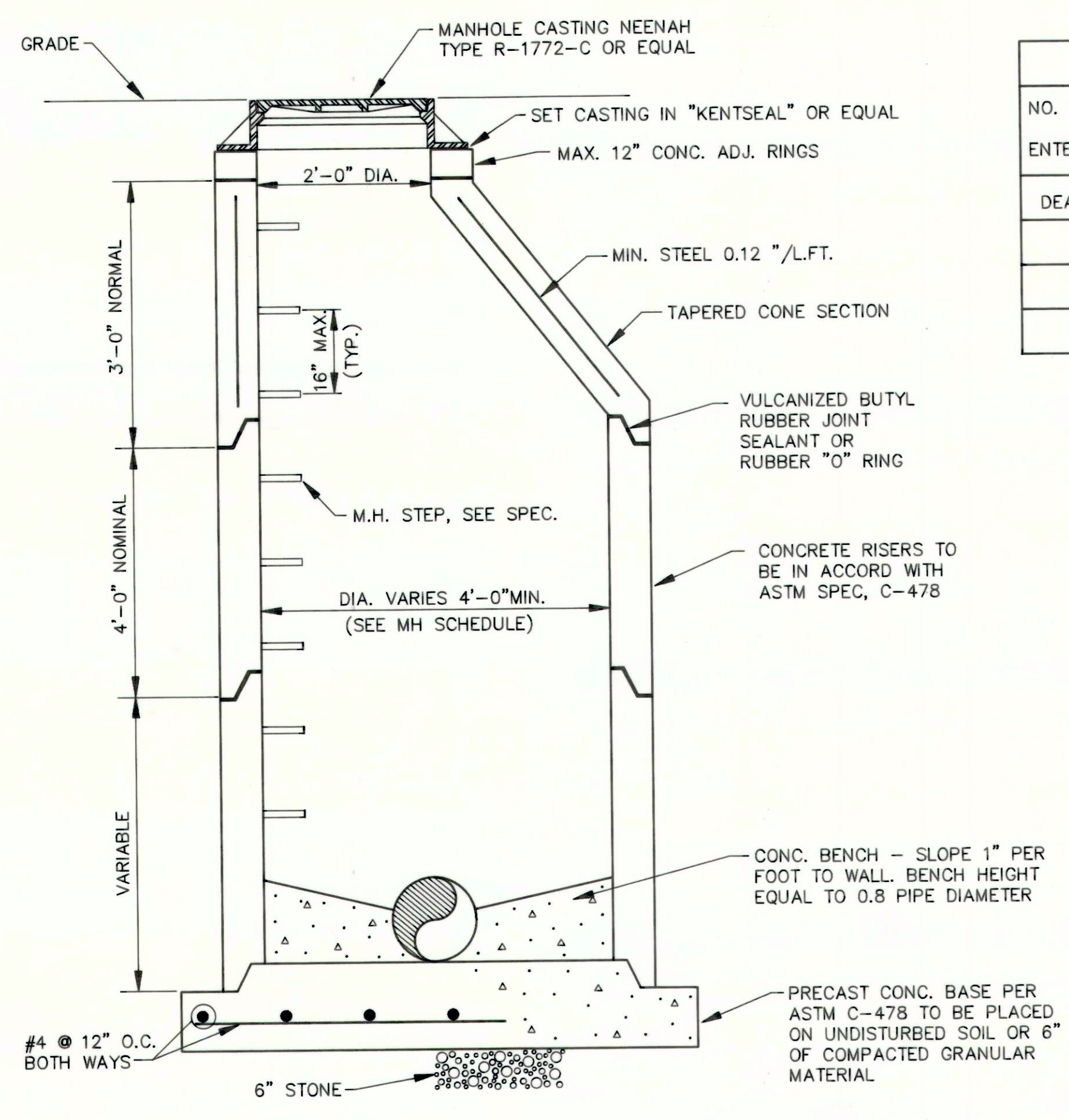
MISCELLANEOUS STRUCTURE & TRENCH DETAILS
FALL CREEK REGIONAL WASTE DISTRICT

SCALE: NONE
DRAWN BY: SJS
DESIGNED BY: DRH
CERTIFIED BY: GOL
DATE: OCT. 1, 1991

BEAM, LONGEST & NEFF, INC.
CONSULTING ENGINEERS
8126 CASTLETON ROAD
INDIANAPOLIS, INDIANA 46250



DATE	REVISIONS	DESCRIPTION	AMP
5/12/91	AS-BUILT		

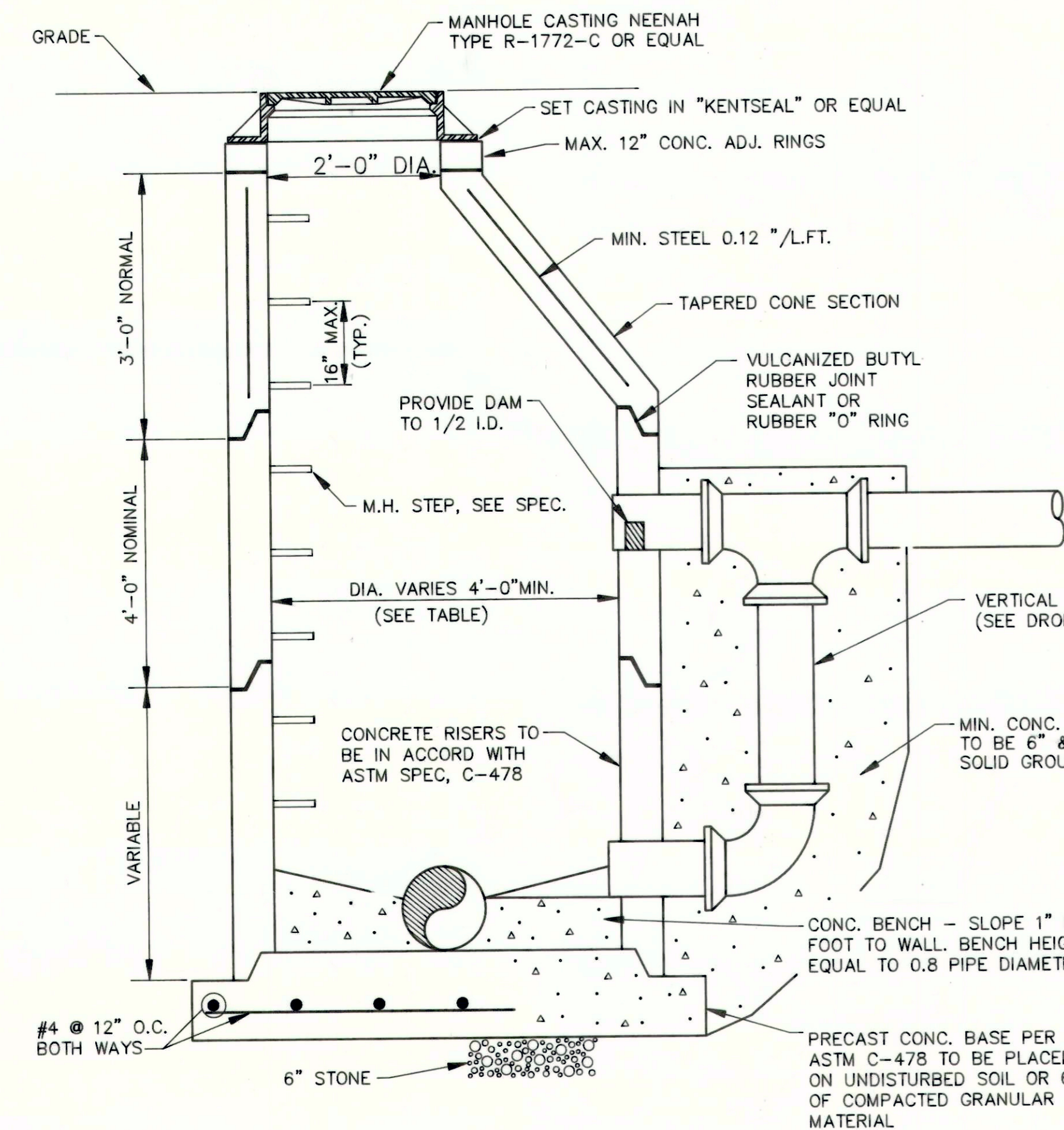


STANDARD PRECAST MANHOLE (STD-1)

NO. OF PIPES ENTERING MH	MAXIMUM PIPE DIAMETERS											REQUIRES SPECIAL MANHOLE
	8"	10"	12"	15"	16"	18"	21"	24"	27"	33"	36"/UP	
DEAD END	4'	4'	4'	4'	4'	4'	4'	4'	4'	5'	5'	
1	4'	4'	4'	4'	4'	4'	4'	5'	5'	5'	5'	
2	4'	4'	4'	4'	4'	4'	5'	5'	5'	5'	6'	
3	4'	4'	5'	5'	5'	5'	5'	5'	5'	6'	6'	

NOTES

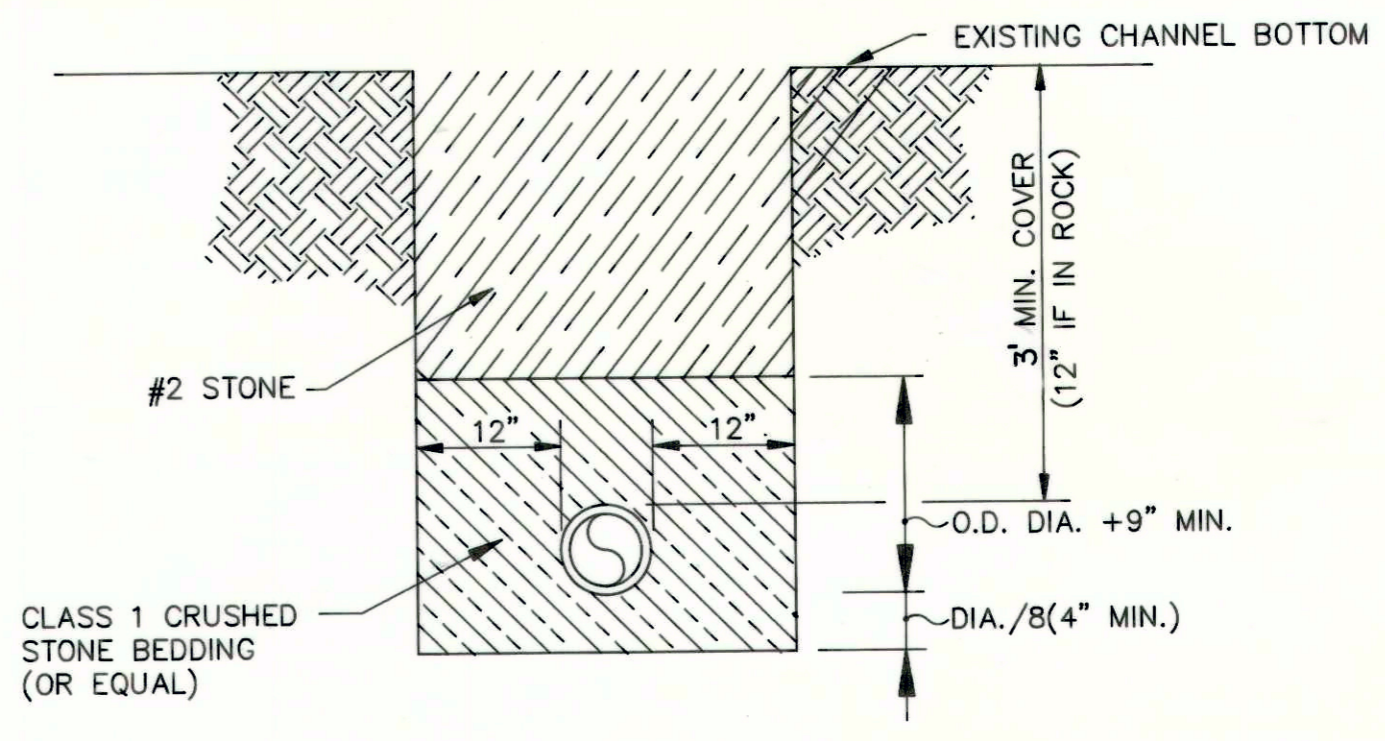
- ALL MATERIALS AND WORKMANSHIP SHALL CONFORM TO THE LATEST A.S.T.M. SPEC.
- MANHOLE ADJUSTMENT RINGS TO BE ADJUSTED TO MATCH FINAL GROUND OR PAVEMENT GRADE, UNLESS OTHERWISE NOTED ON PLANS.
- MANHOLE BOTTOMS SHALL BE FORMED TO PROVIDE CHANNELS CONFORMING IN SIZE AND SHAPE TO THE INCOMING AND OUTGOING SLOPED SEWER WITH SMOOTH CHANNEL INVERT SLOPED AND FILLETED IN A MANNER TO PREVENT DEPOSITING OF SOLIDS IN THE MANHOLE.
- FOR ALL MANHOLES 6'-0" OR LESS IN DEPTH PROVIDE RISER WITH FLAT TOP IN LIEU OF ECCENTRIC CONE IN ACCORDANCE WITH A.S.T.M. C-478.



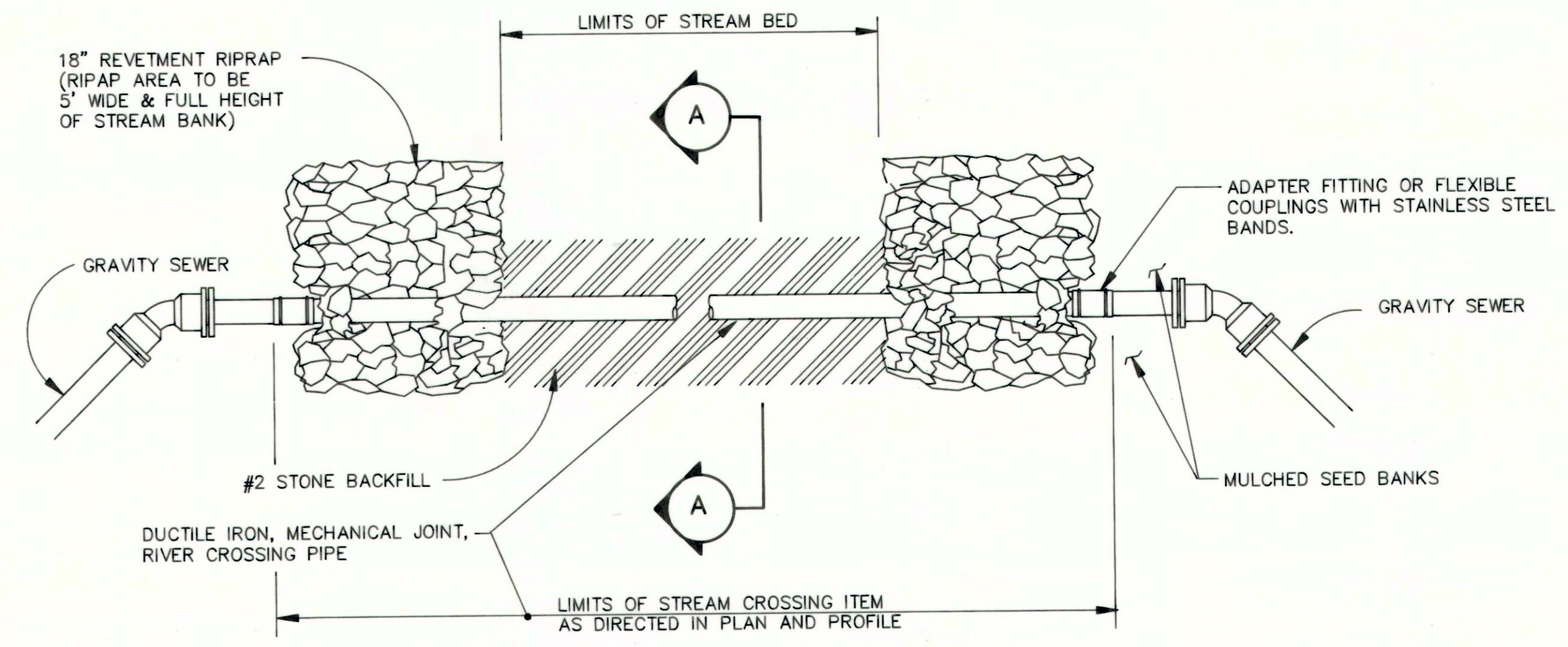
STANDARD PRECAST DROP MANHOLE (STD-2)

DROP PIPE SCHEDULE			
DIA. MAIN	DIA. DROP	DIA. MAIN	DIA. DROP
8"	6"	18"	12"
10"	8"	21"	15"
12"	10"	24"	15"
15"	12"	30"	18"

NOTE: ABOVE DROP SIZES ARE (MIN.)

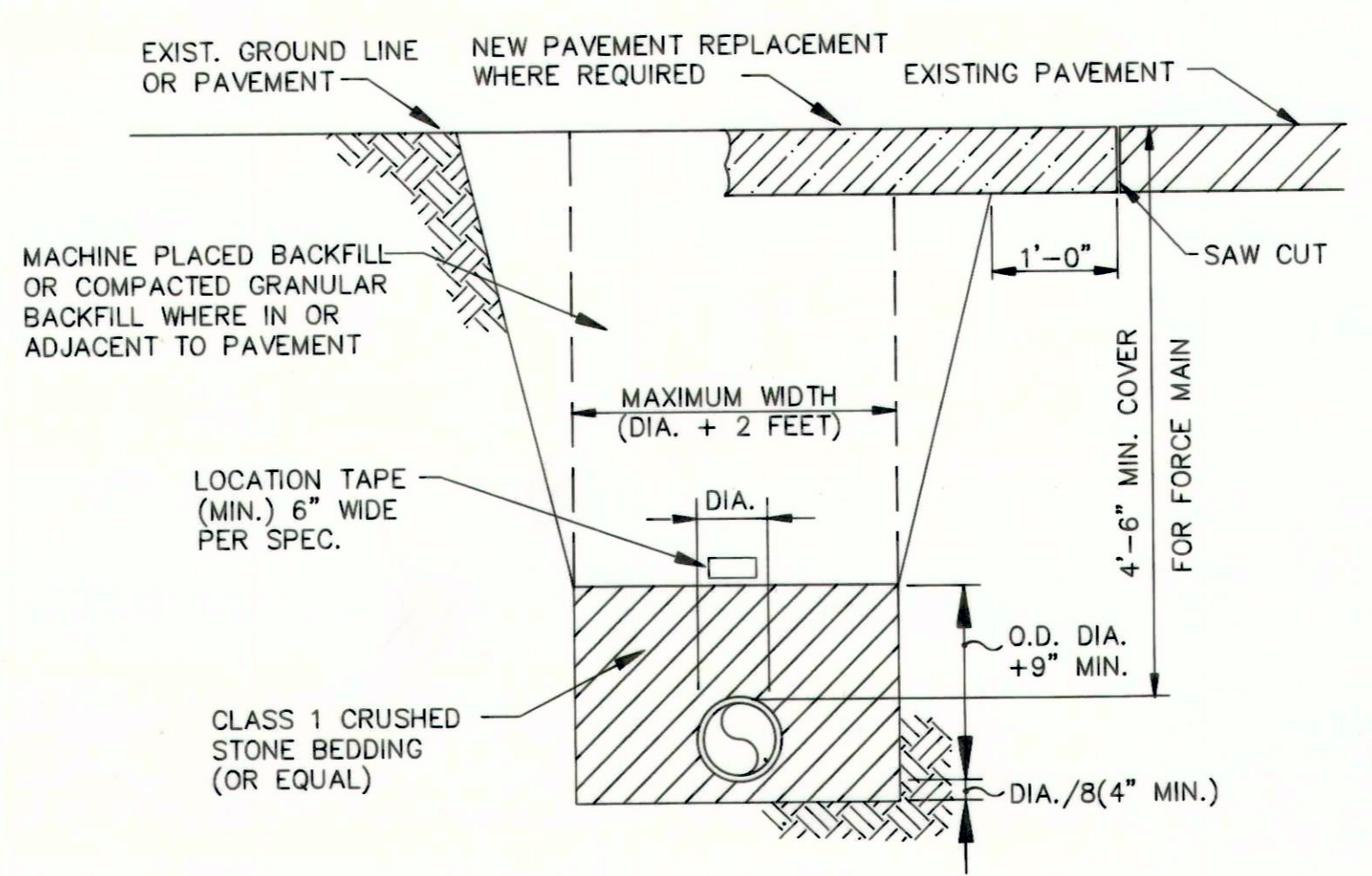


SECTION A

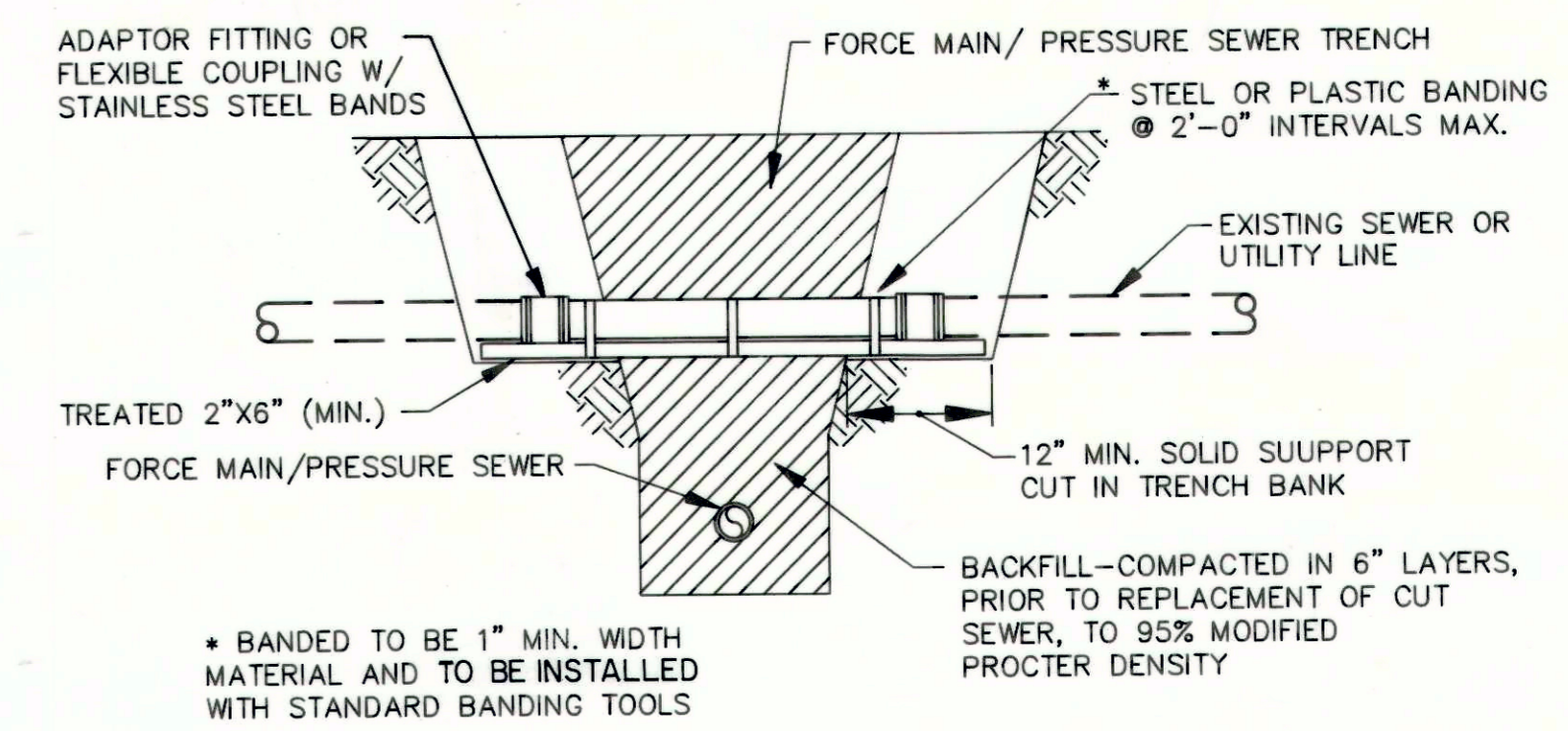


STREAM CROSSING PLAN (STD-18)

NOTE: TRENCHES SHALL BE EXCAVATED W/ SIDEWALL SLOPES AS REQUIRED TO COMPLY W/ APPLICABLE REGULATIONS AND STANDARDS OF THE DEPARTMENT OF LABOR OCCUPATIONAL SAFETY AND HEALTH ADMINISTRATION.



FLEXIBLE PIPE FORCE MAIN OR GRAVITY SEWER TYPICAL TRENCH DETAIL (STD-23)



REPAIR AND SUPPORT DETAILS OF EXPOSED UTILITIES AND SEWERS (STD-22)

RECORD DRAWING