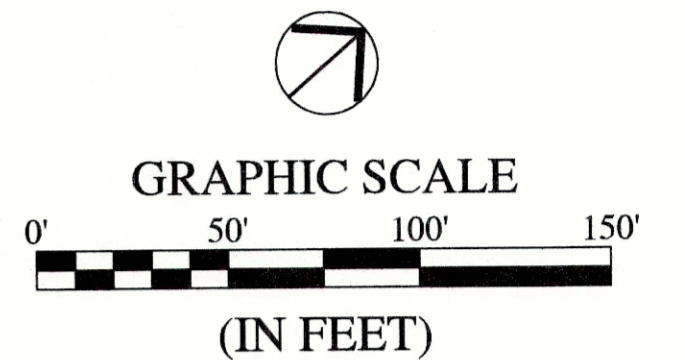
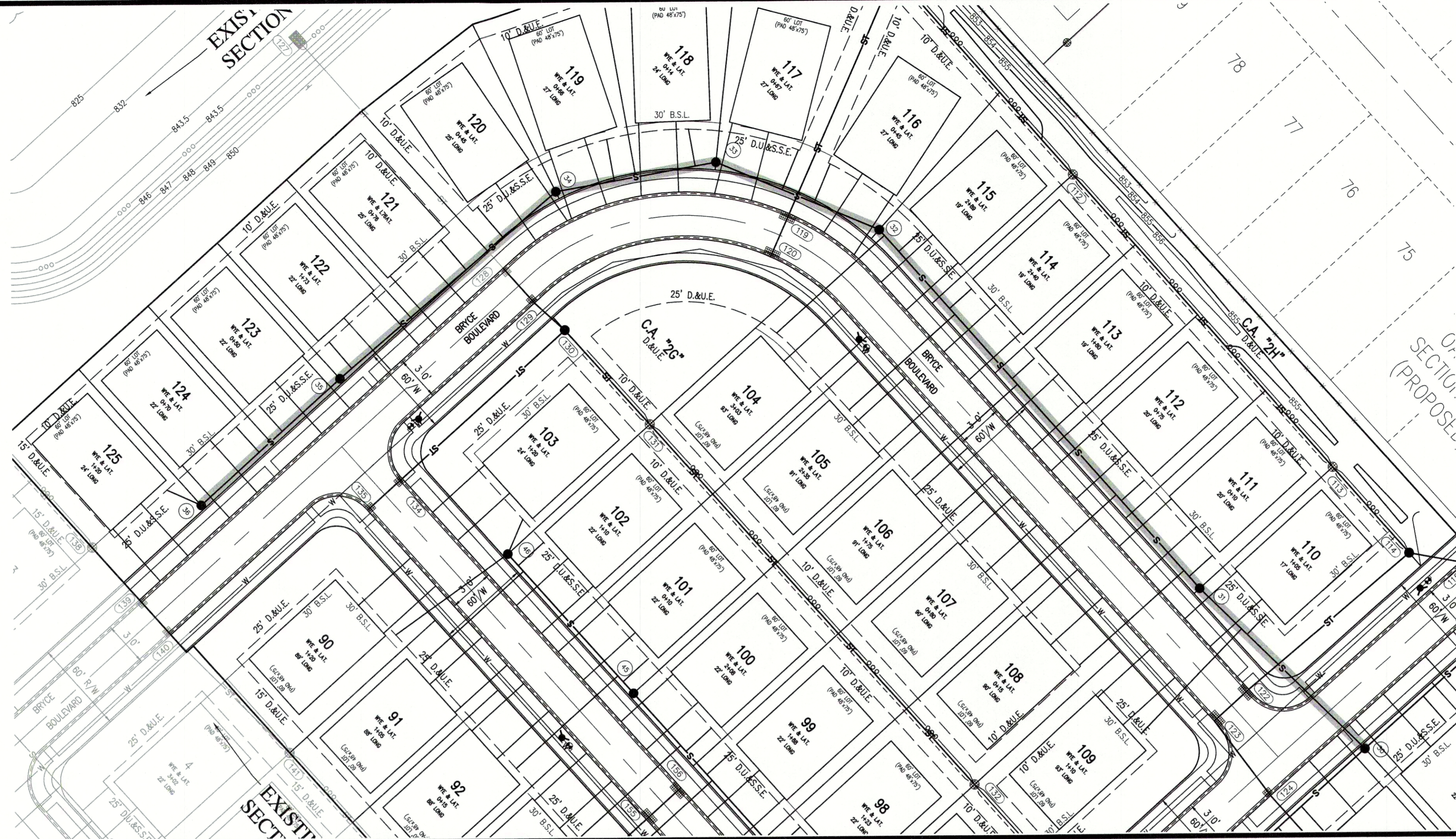


File Name: W:\rbor Homes\2019-318-B 4bor - Estes Park Sec 2\Design\CAD\19318-B Sanitary Plan.dwg, Layout: C4.3 By: rmmple
Plot Date: Sep 14, 2020 Plot Time: 5:43pm

LEGEND:	
EXISTING	PROPOSED
--- RIGHT-OF-WAY LINE	--- RIGHT-OF-WAY LINE
--- EASEMENT LINE	--- EASEMENT LINE
--- SETBACK LINE	--- SETBACK LINE
--- CENTERLINE	--- CENTERLINE
--- SWALE / FLOWLINE	--- SWALE / FLOWLINE
--- SUBSURFACE DRAIN	--- SUBSURFACE DRAIN
--- SANITARY SEWER	--- SANITARY SEWER
--- STORM SEWER	--- STORM SEWER
--- STORM CULVERT	--- STORM CULVERT
--- WATER MAIN	--- WATER MAIN
--- SANITARY MANHOLE	--- SANITARY MANHOLE
--- STORM MANHOLE	--- STORM MANHOLE
--- STORM INLET	--- STORM INLET
--- STORM END SECTION	--- STORM END SECTION
--- FIRE HYDRANT	--- FIRE HYDRANT
--- PROFILED PIPELINE	--- PROFILED PIPELINE
EX --- EXISTING	
INV --- INVERT ELEVATION	
MH --- MANHOLE	
PVC --- POLYVINYL CHLORIDE PIPE	
TC --- TOP OF CASTING GRADE	
B.S.L. --- BUILDING SETBACK LINE	
D.U.&S.E. --- DRAINAGE UTILITY AND SANITARY SEWER EASEMENT	
D.&U.E. --- DRAINAGE UTILITY EASEMENT	



BENCHMARK INFORMATION:

ORIGINATING BENCHMARK:
RAILROAD SPIKE IN POWER POLE LOCATED 76 FEET SOUTH
AND 33 FEET WEST OF THE NORTHWEST CORNER OF
OAKMONT (OAKMONT SITE TEMPORARY BENCHMARK)
PUBLISHED ELEVATION = 845.67 (NAVD88)
[NORTHING: 1,726,180; EASTING: 273,236]

LEVEL CIRCUITS WERE THEN RUN THROUGH CP #101-102.
TBM WAS ESTABLISHED WITH RTK GPS USING AN ON-SITE
BASE STATION AND ROVER.

CP #101
5/8" REBAR W/RED CAP STAMPED "HWC ENGINEERING
RANDOM POINT" LOCATED ON THE WEST SIDE OF E. CO. RD.
168, APPROXIMATELY 440 FEET SOUTH OF DEL WEBB
PARKWAY
ELEVATION = 857.91 (NAVD88)
[NORTHING: 1,723,827; EASTING: 273,267]

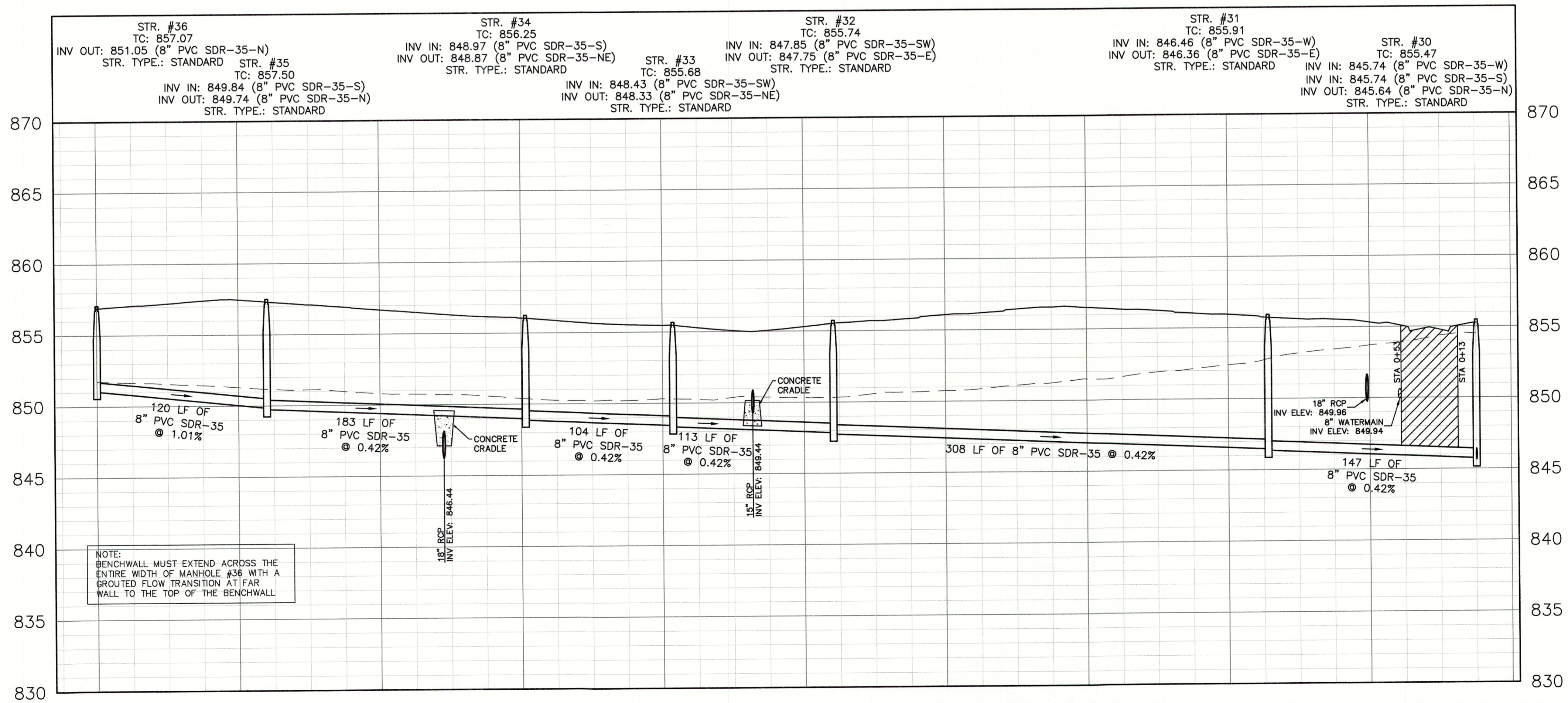
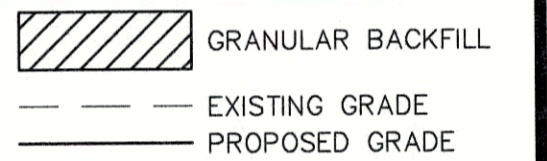
CP #102
5/8" REBAR W/RED CAP STAMPED "HWC ENGINEERING
RANDOM POINT" LOCATED NORTHWEST OF THE INTERSECTION
OF DEL WEBB PARKWAY AND E. CO. RD. 168
ELEVATION = 850.07 (NAVD88)
[NORTHING: 1,724,325; EASTING: 273,249]

TBM
NORTH RIM OF SANITARY MANHOLE LOCATED 20 FEET
SOUTH OF THE SOUTH SIDE OF THE WEST-MOST END OF W.
CONSTELLATION DR.
ELEVATION = 857.87 (NAVD88)
[NORTHING: 1,723,985; EASTING: 274,627]

SANITARY PROFILE

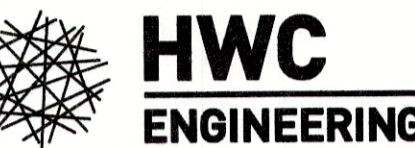
VERTICAL SCALE: 1" = 5'
HORIZONTAL SCALE: 1" = 50'

PVC GRAVITY SEWER PIPE AND FITTINGS
MUST, AT A MINIMUM, BE INSTALLED IN
ACCORDANCE WITH THE DIRECTIONS
CONTAINED IN ASTM D 2321 AND
FOLLOW CURRENT FCRWD STANDARDS.

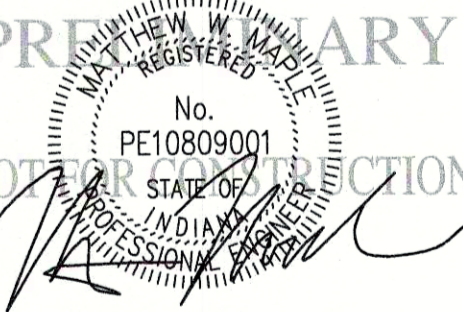


REVISIONS

DATE	DESCRIPTION	BY



ESTES PARK SECTION 2 MADISON COUNTY, INDIANA SANITARY SEWER PLAN & PROFILE



DRAWN BY TD/LM/KS	JOB NUMBER 2019-318
CHECKED BY MM	
DATE SEPTEMBER 8, 2020	
SCALE AS SHOWN	
SHEET	

C4.3

SANITARY SEWER PLAN &
PROFILE