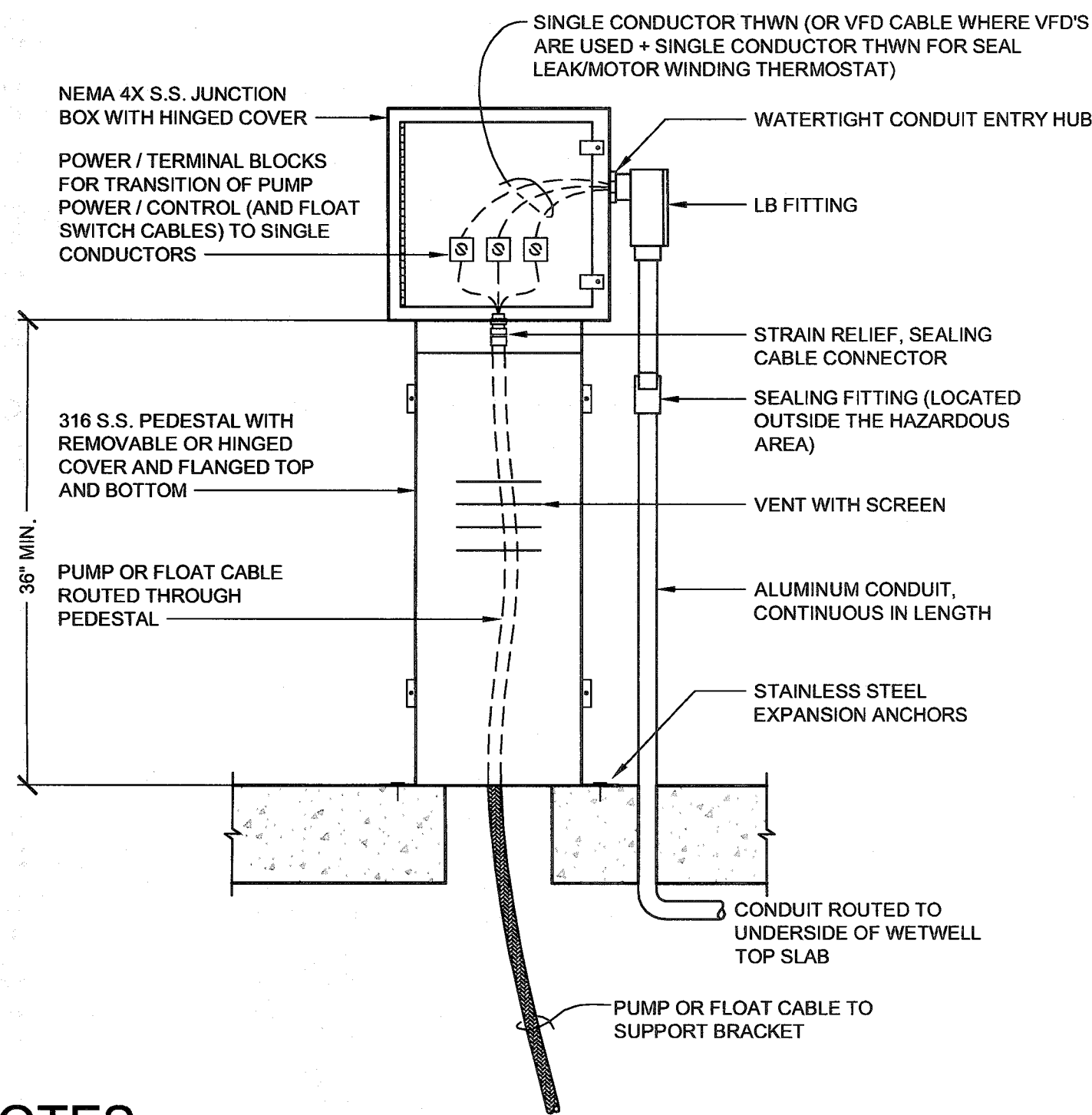


PLOTTED BY: WRoberts

PRINTED: 11/17/2017 @ 2:39PM

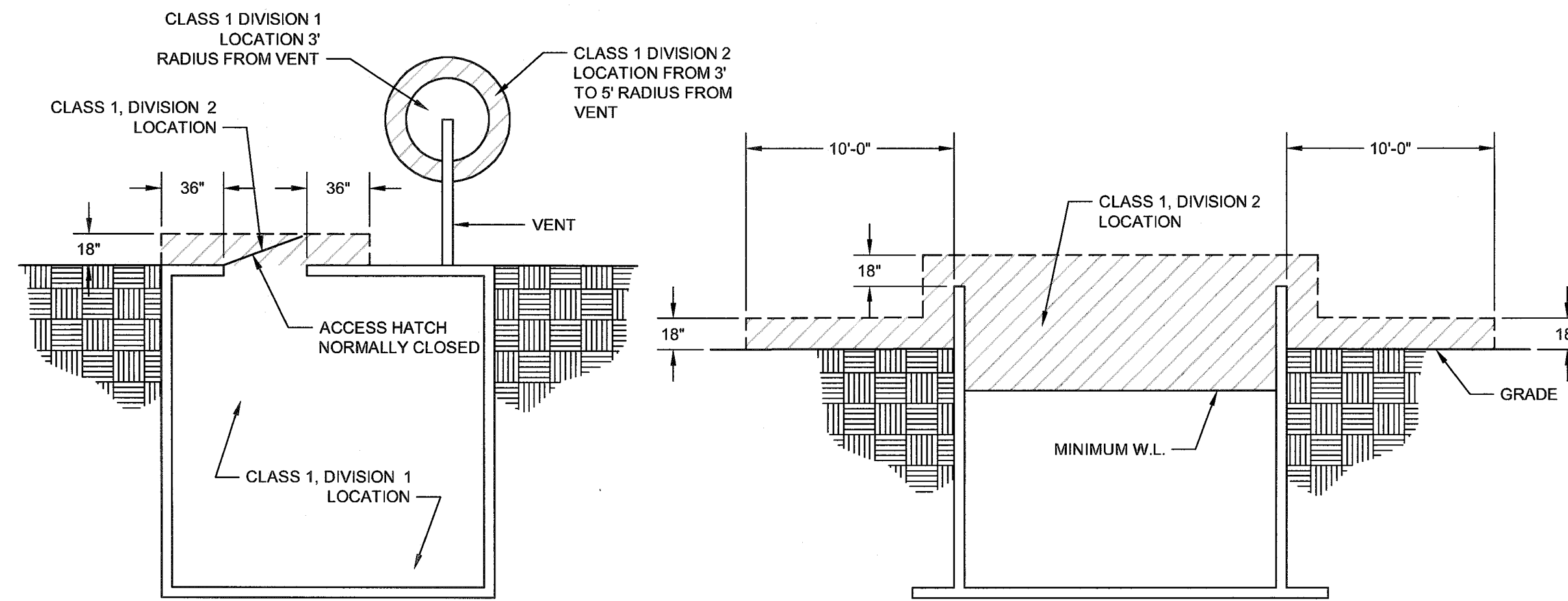
FILE NAME: G:\4625-FCRWD-BF\Working Drawings\AutoCAD\4625-E-501.dwg



NOTES:

- JUNCTION BOX SHALL BE SIZED AS REQUIRED TO ACCOMMODATE POWER/TERMINAL BLOCKS AND NUMBER OF CABLES.
- PROVIDE ADEQUATE POWER AND TERMINAL BLOCKS FOR TRANSITION OF PUMP POWER/CONTROL OR FLOAT CABLES TO SINGLE CONDUCTORS.
- PROVIDE STRAIN RELIEF CABLE GRIP AND SEALING CABLE CONNECTORS FOR ALL CABLES ENTERING WETWELL.
- SEALING CONNECTORS SHALL BE RATED FOR CLASS 1, DIVISION 2, GROUP D HAZARDOUS LOCATIONS AND SHALL BE HAWKE 710, OR EQUAL.
- GROUND LUG IS NOT SHOWN, HOWEVER, IS REQUIRED.
- WETWELL JUNCTION BOX DETAIL ALSO APPLIES TO PRESSURE TRANSDUCER CABLE, WHERE APPLICABLE. PRESSURE TRANSDUCER CABLE IS COILED IN JUNCTION BOX WITH NO SPLICES.

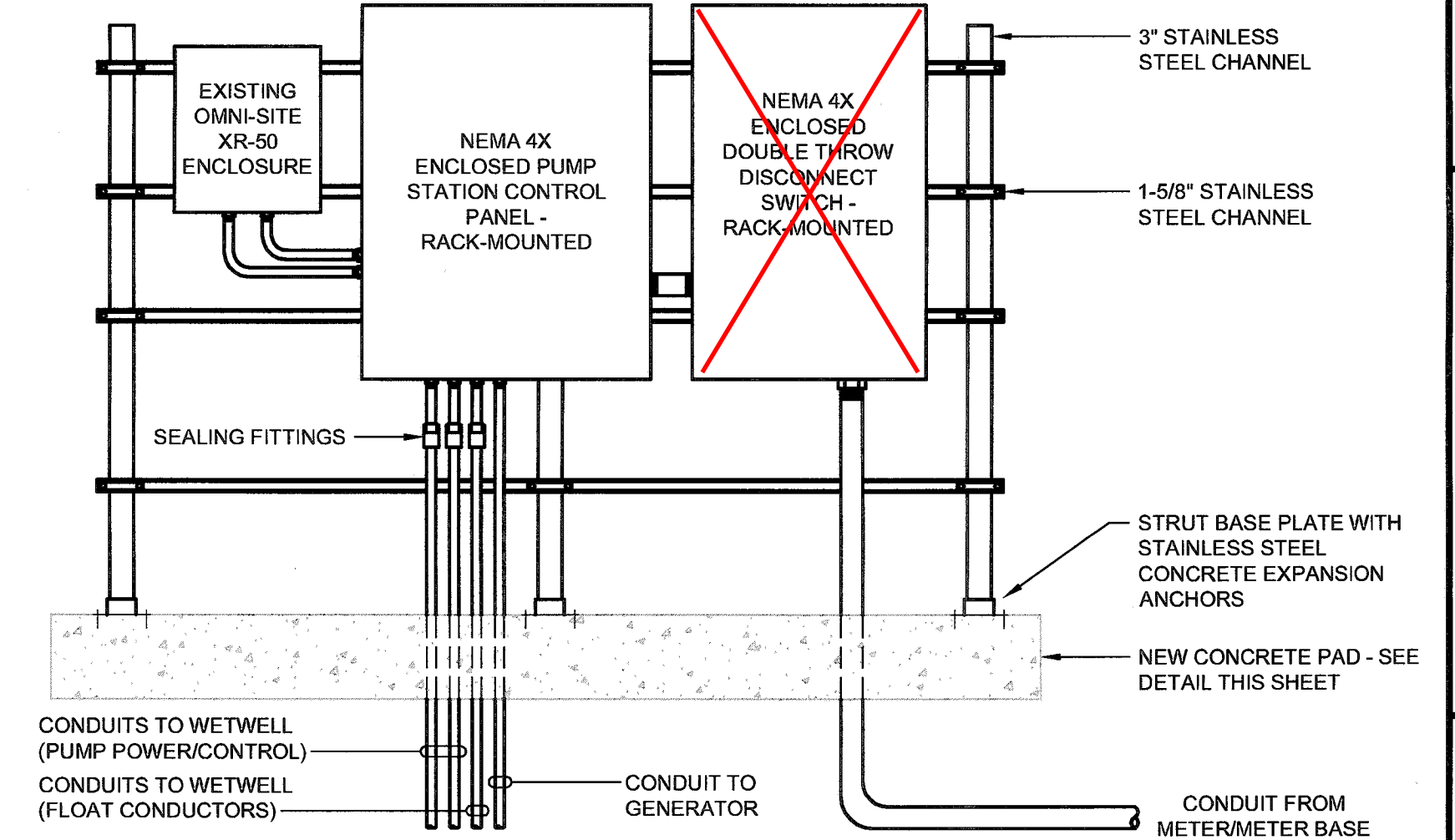
1 PUMP/FLOAT CABLE WETWELL JUNCTION BOX
NOT TO SCALE



ENCLOSED STRUCTURE

OPEN TANK

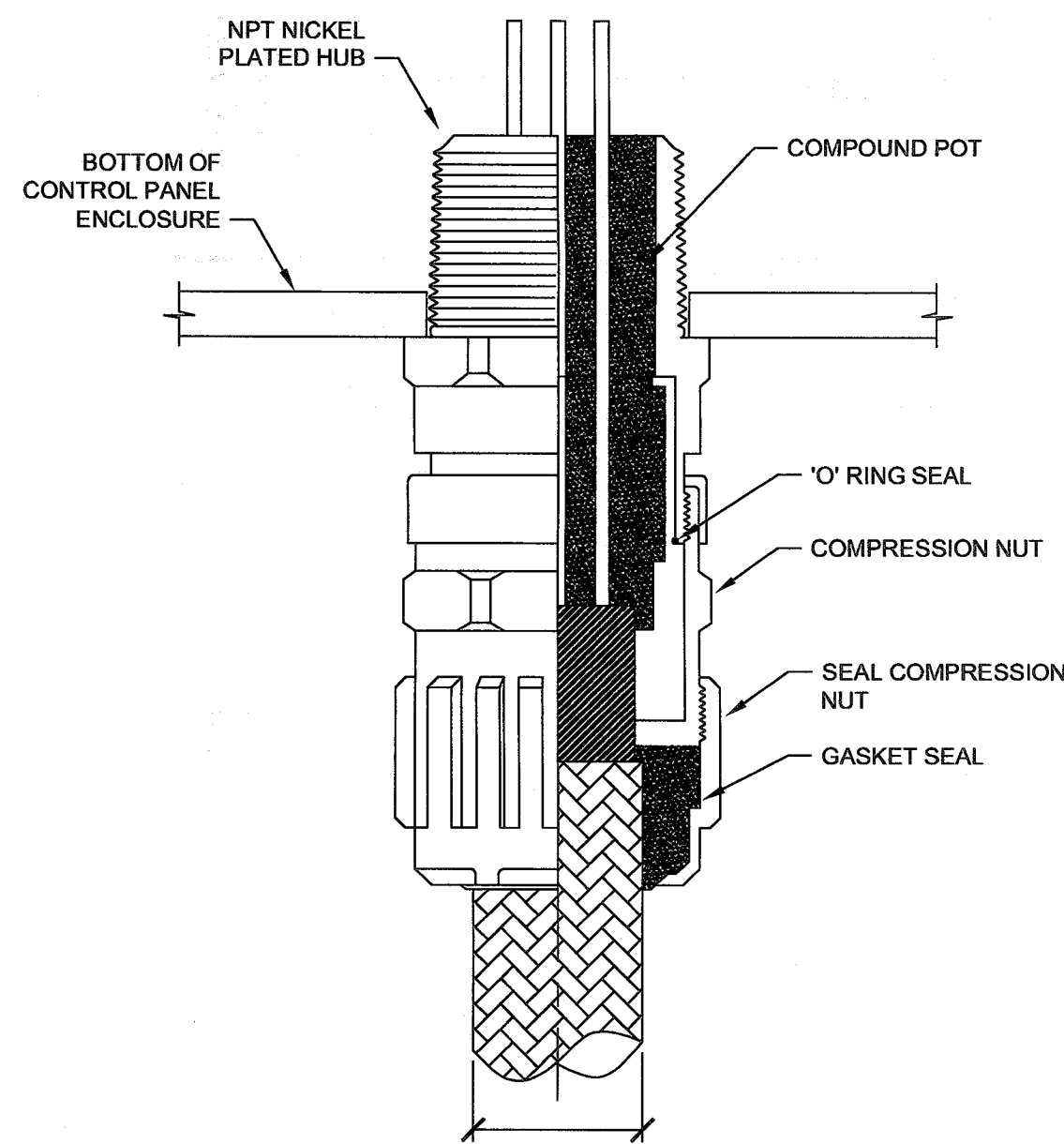
2 TYPICAL STRUCTURE EXPLOSIONPROOF LOCATION BOUNDARIES
NOT TO SCALE



NOTES:

- ALL NUTS, BOLTS, WASHERS, ETC. SHALL BE STAINLESS STEEL.
- CONTRACTOR SHALL PROVIDE ANGLED CROSS BRACING TO PREVENT LATERAL MOVEMENT AS REQUIRED (NOT SHOWN).
- ALL EQUIPMENT SHALL BE BOLTED TO STRUT FRAME, UTILIZING STAINLESS STEEL ADAPTER PLATES AS REQUIRED.

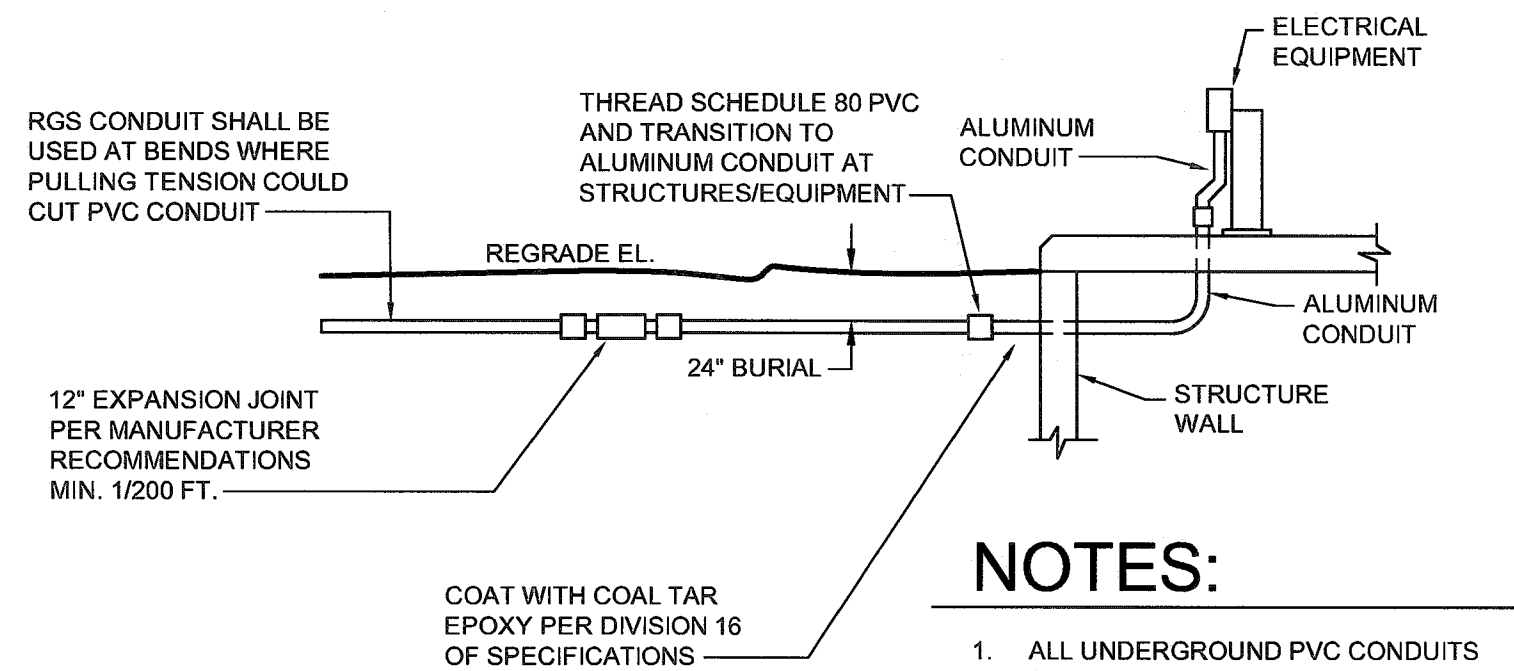
3 ELECTRICAL EQUIPMENT RACK - OUTDOOR EQUIPMENT
NOT TO SCALE



NOTES:

- CONNECTORS SHALL BE HAWKE 710, OR EQUAL (CLASS 1, DIVISION 2 GROUP D HAZARDOUS LOCATION RATED).
- PROVIDE SEALING WASHER FOR INGRESS PROTECTION WHERE SPECIFIED.

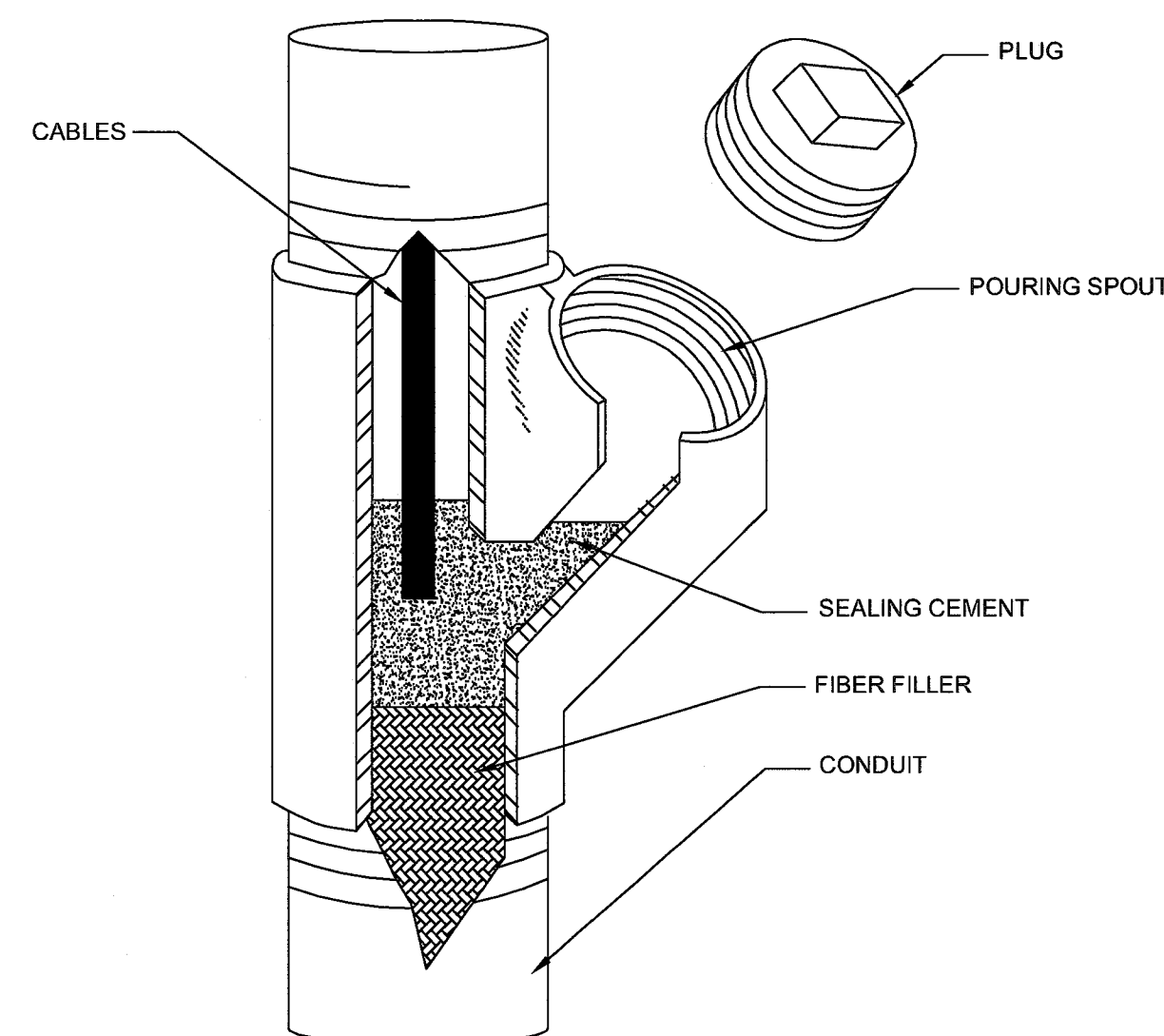
4 PUMP POWER AND CONTROL CABLE GLAND CONNECTION
NOT TO SCALE



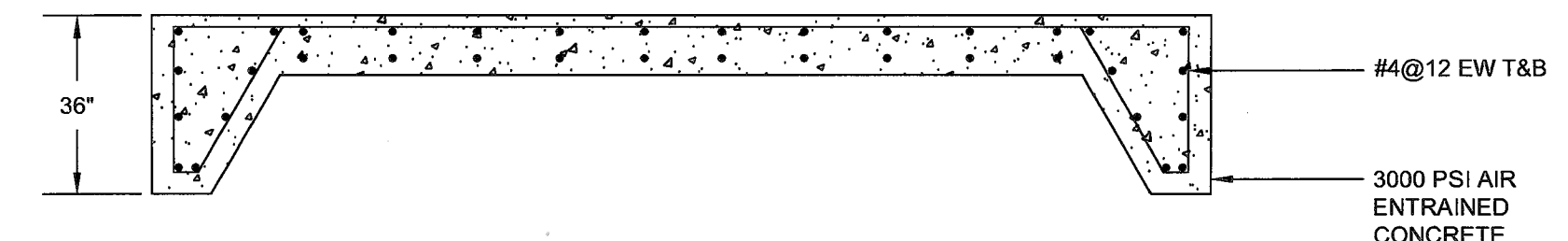
NOTES:

- ALL UNDERGROUND PVC CONDUITS SHALL TRANSITION TO ALUMINUM WHERE POURED IN SLAB OR EXPOSED.

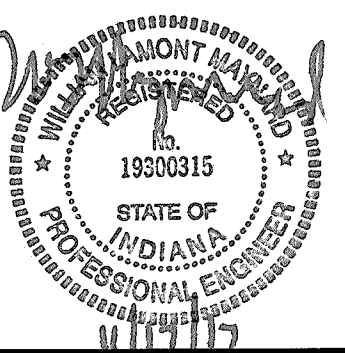
5 TYPICAL UNDERGROUND PVC CONDUIT TRANSITION TO ALUMINUM CONDUIT
NOT TO SCALE



6 CONDUIT SEAL FITTING
NOT TO SCALE



7 TYP. CONCRETE PAD - ELECTRICAL EQUIPMENT
NOT TO SCALE



GRW PROJECT NO. 4625
CLIENT PROJECT NO.
ALL RIGHTS RESERVED.
THIS DOCUMENT IS THE PROPERTY OF
GEOSPATIAL ARCHITECTURE. IT IS TO BE
REPRODUCED IN WHOLE OR IN PART
OR USED FOR CONSTRUCTION OF ANY
DRAWING WITHOUT WRITTEN PERMISSION
FROM GEOSPATIAL ARCHITECTURE.

geospatial
architecture | geospatial
engineering | architecture | geospatial
www.grwinc.com

MISCELLANEOUS ELECTRICAL DETAILS I
BABY FARMS LIFT STATION AND FORCE MAIN IMPROVEMENTS
FALL CREEK REGIONAL WASTE DISTRICT

DESIGNED: WER
DRAWN: WER
REVIEWED: WER
APPROVED: WLM

REVISIONS	DATE	DESCRIPTION
NO.		
1		
2		
3		
4		
5		
6		
7		
8		
9		
10		

DATE:
SCALE:
NOT TO SCALE
SHEET NO.

E-501