

NOTES:

- FOR LOW-VOLUME SITUATIONS WITH SHORT WORK ZONES ON STRAIGHT ROADWAYS WHERE THE FLAGGER IS VISIBLE TO ROAD USERS APPROACHING FROM BOTH DIRECTIONS, A SINGLE FLAGGER, POSITIONED TO BE VISIBLE TO ROAD USERS APPROACHING FROM BOTH DIRECTIONS, MAY BE USED.
- THE "ROAD WORK AHEAD" AND THE "END ROAD WORK" SIGNS MAY BE OMITTED FOR SHORT-DURATION OPERATIONS.
- FLASHING WARNING LIGHTS AND/OR FLAGS MAY BE USED TO CALL ATTENTION TO THE ADVANCE WARNING SIGNS. A "BE PREPARED TO STOP" SIGN MAY BE ADDED TO THE SIGN SERIES.
- THE BUFFER SPACE SHOULD BE EXTENDED SO THAT THE TWO-WAY TRAFFIC TAPER IS PLACED BEFORE A HORIZONTAL (OR CREST VERTICAL) CURVE TO PROVIDE ADEQUATE SIGHT DISTANCE FOR THE FLAGGER AND A QUEUE OF STOPPED VEHICLES.
- AT NIGHT, FLAGGER STATIONS SHALL BE ILLUMINATED, EXCEPT IN EMERGENCIES.
- WHEN USED, THE "BE PREPARED TO STOP" SIGN SHOULD BE LOCATED BETWEEN THE "FLAGGER" SIGN AND THE "ONE LANE ROAD" SIGN.

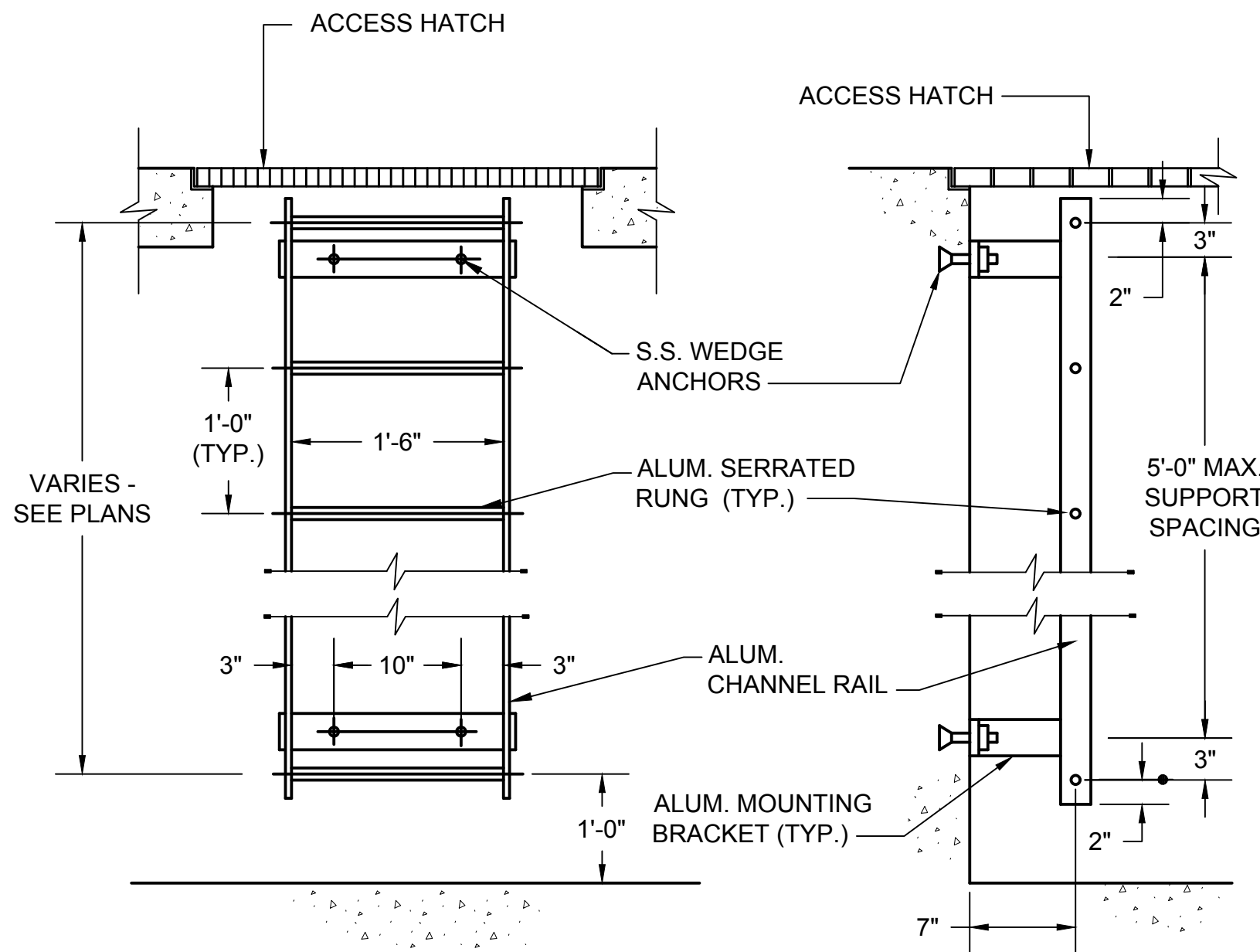
FOR LOW SPEED URBAN CONDITIONS

A=100 FT.
 B=100 FT.
 C=100 FT.

DETAIL - TRAFFIC CONTROL PLAN

NOT TO SCALE

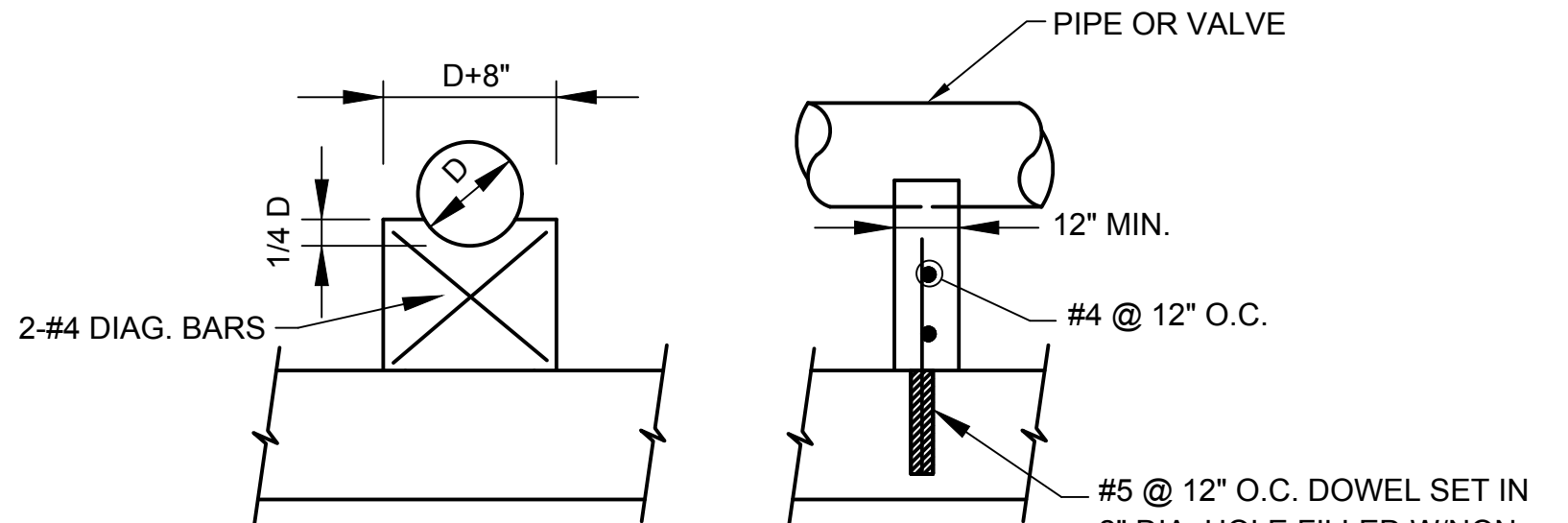
NOTE: TRAFFIC CONTROL PLANS ARE GUIDELINES ONLY. ALL TRAFFIC CONTROL PLANS AND LANE CLOSURES MUST BE APPROVED BY THE OWNER AND ENGINEER.



NOTE:
 LADDER SHALL BE SUPPLIED WITH ALUM. LADDER SAFETY EXTENSION

DETAIL - ACCESS LADDER

NOT TO SCALE

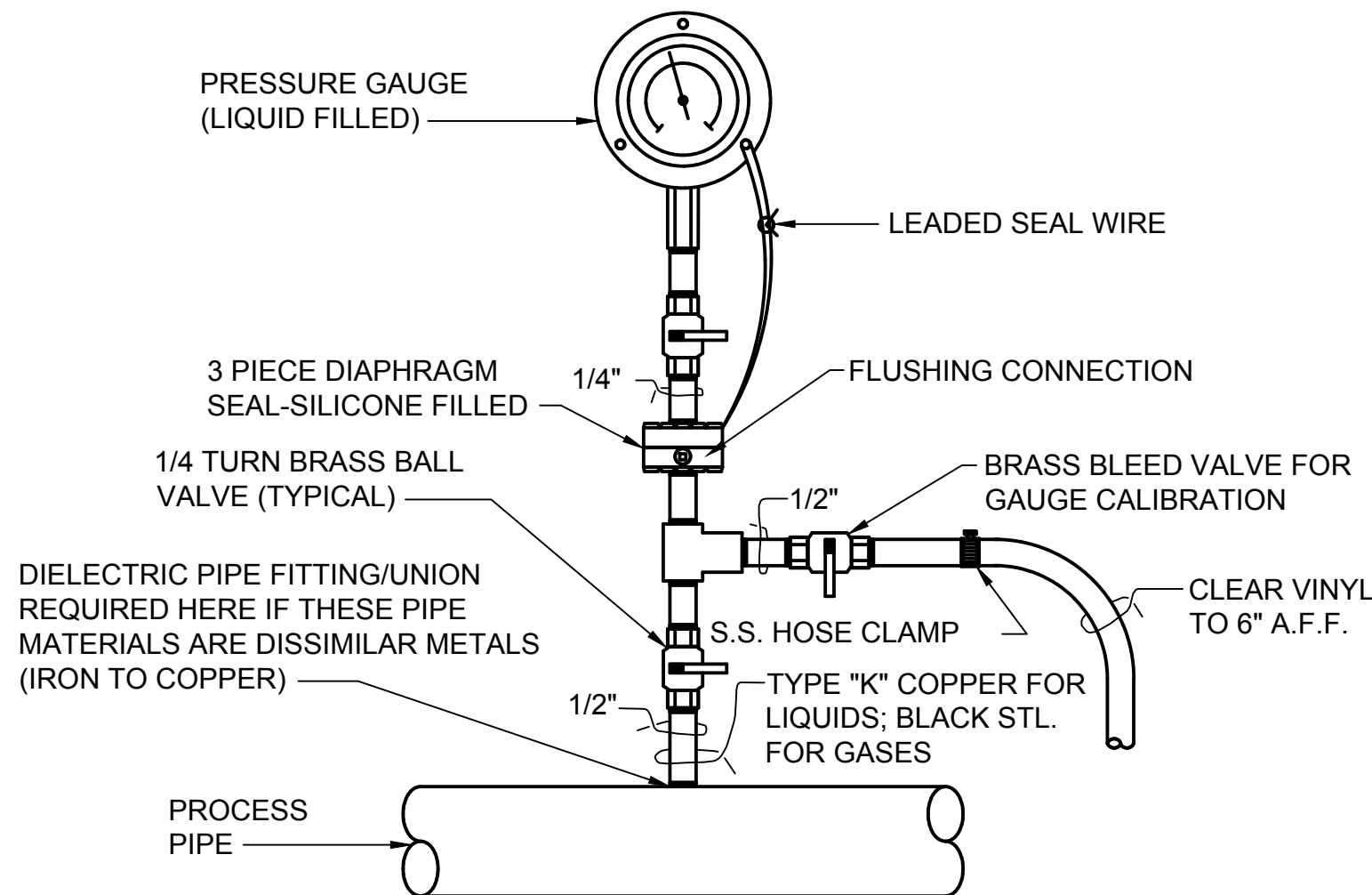


NOTES:

- FOR VALVES AND FITTINGS, SUPPORT WIDTH BASED ON SIZE OF ITEM BEING SUPPORTED AS APPROVED BY THE ENGINEER. FOR WIDTHS GREATER THAN 12" PROVIDE TWO ROWS OF REINFORCING STEEL.
- COAT PIPE/VALVE WITH BOND BREAKER WHERE IT COMES IN CONTACT WITH CONCRETE

DETAIL - VALVE & PIPE SUPPORT

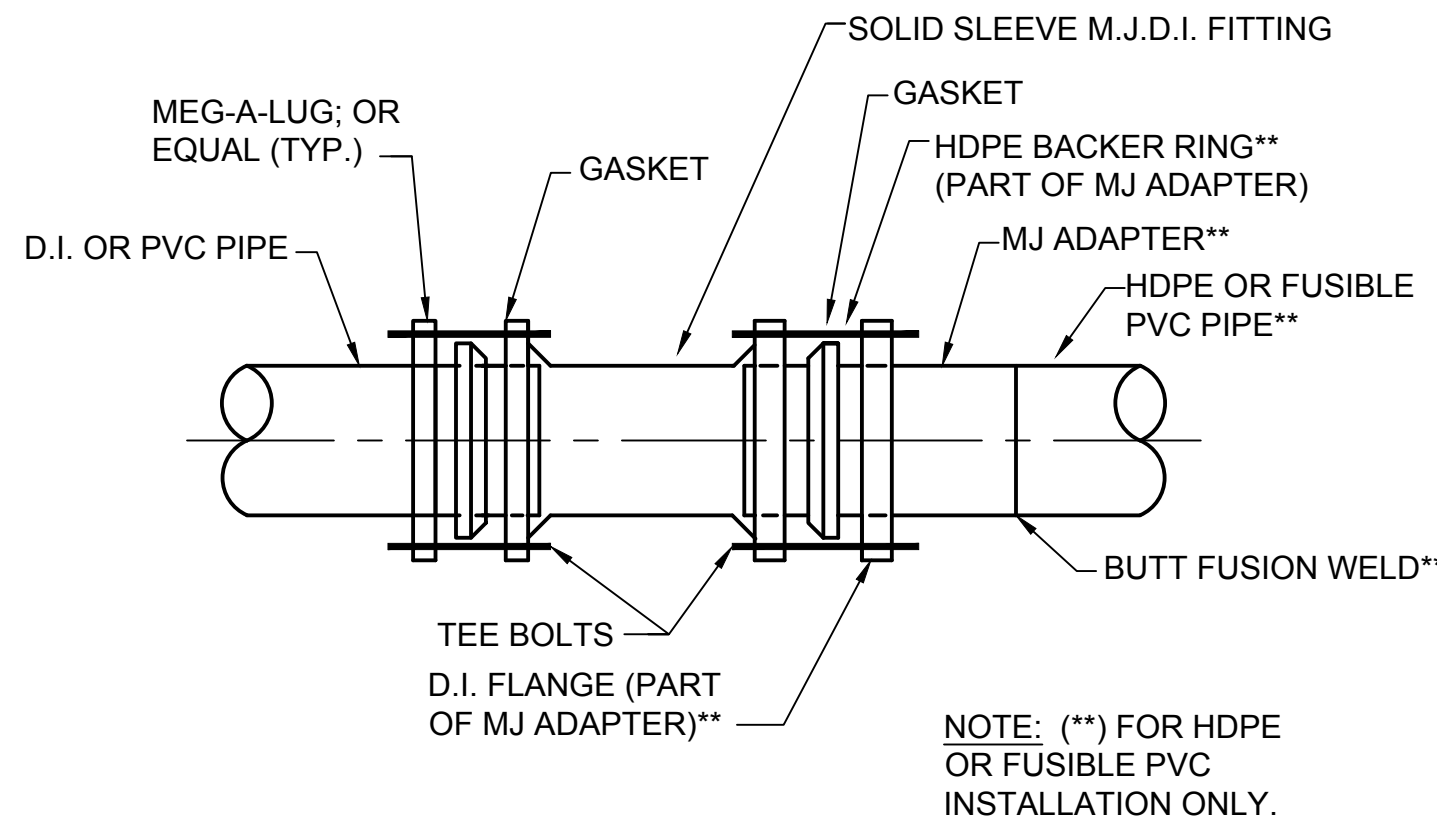
NOT TO SCALE



NOTE: A SADDLE IS REQUIRED FOR ALL TYPES OF PLASTIC PIPE OR THIN WALL DUCTILE IRON PIPE.

DETAIL - PRESSURE GAUGE

NOT TO SCALE



DETAIL - RESTRAINED PIPE TRANSITION COUPLING

NOT TO SCALE

LENGTH IN FT. TO BE RESTRAINED ON EACH SIDE OF FITTING FOR 6" PVC PIPE					
TYPE OF BEND	90° BEND	45° BEND	22 1/2° BEND	11 1/4° BEND	DEADENDS
HORIZ. BEND	12	5	3	2	34
VERT. BEND	---	14 UPPER 4 LOWER	7 UPPER 2 LOWER	4 UPPER 1 LOWER	

RESTRAINED JOINT NOTES

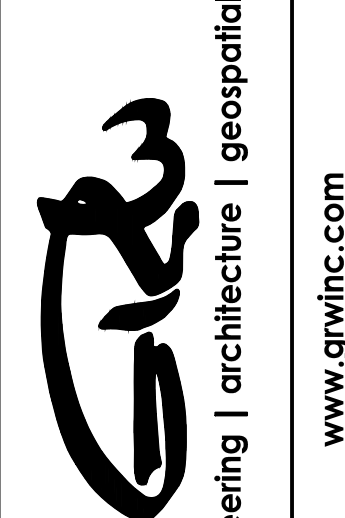
- CONTRACTOR SHALL INSTALL RJDI FITTINGS FOR ALL VERTICAL AND HORIZONTAL BENDS.
- RESTRAINED LENGTHS WERE CALCULATED ASSUMING A 1.5 FACTOR OF SAFETY, TYPE 5 TRENCH CONDITIONS, "SM" SOIL CLASSIFICATION, 5 FT. MIN. DEPTH OF BURY, AND 150 PSI HYDROSTATIC TEST PRESSURE (SOURCE: EBAA IRON RESTRAINT DESIGN CALCULATION SOFTWARE v.6.0).
- ALL FORCEMAIN APPURTENANCES WITHIN RJDI LIMITS MUST BE RESTRAINED AT EACH JOINT.

RESTRAINED JOINT CALCULATIONS

NOT TO SCALE



GRW PROJECT NO. 4625
 CLIENT PROJECT NO. --
 ALL RIGHTS RESERVED. NO PART OF THIS DOCUMENT MAY BE REPRODUCED IN WHOLE OR IN PART WITHOUT THE WRITTEN PERMISSION OF GRW ENGINEERS, INC. AND SHALL NOT BE USED FOR ANY OTHER PROJECT OTHER THAN THIS SPECIFIC PROJECT WITHOUT WRITTEN PERMISSION.



STANDARD DETAILS

 BABY FARMS LIFT STATION AND FORCE MAIN IMPROVEMENTS
 FALL CREEK REGIONAL WASTE DISTRICT

DESIGNED	GWL	DRAWN	JAJ	REVIEWED	JPT	APPROVED	GWL
NO	---	---	---	---	---	---	---
DATE	---	---	---	---	---	---	---
DESCRIPTION	---	---	---	---	---	---	---
NO	---	---	---	---	---	---	---

DATE: NOVEMBER 197
 SCALE: N.T.S.
 SHEET NO.