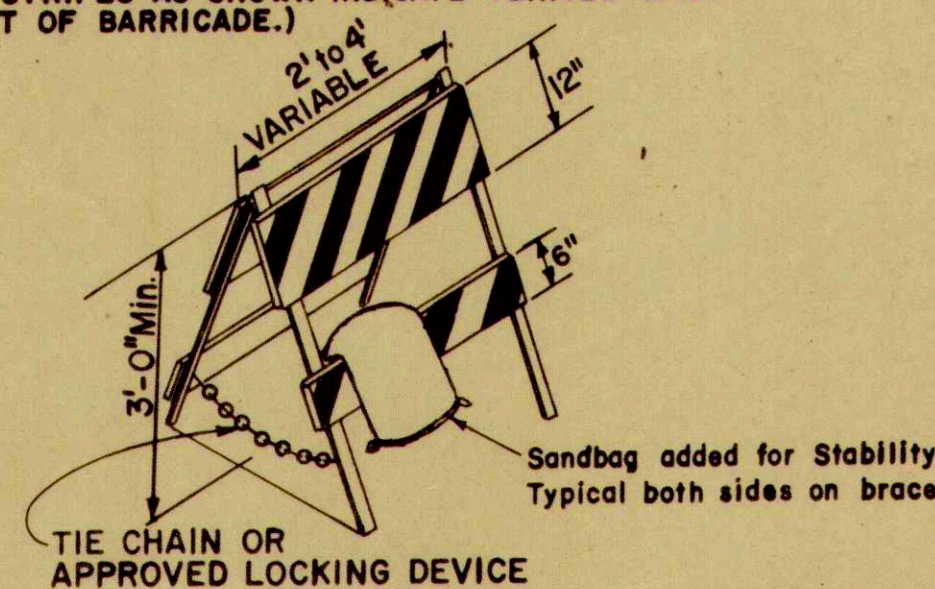
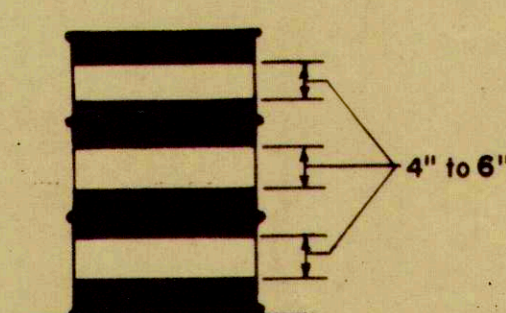


TYPE I

NOTE: STRIPES SHALL SLOPE DOWNWARD TOWARDS THAT SIDE OF THE BARRICADE ON WHICH THE APPROACHING VEHICLE MUST PASS. (STRIPES AS SHOWN INDICATE VEHICLE MUST PASS TO LEFT OF BARRICADE.)



TYPE II

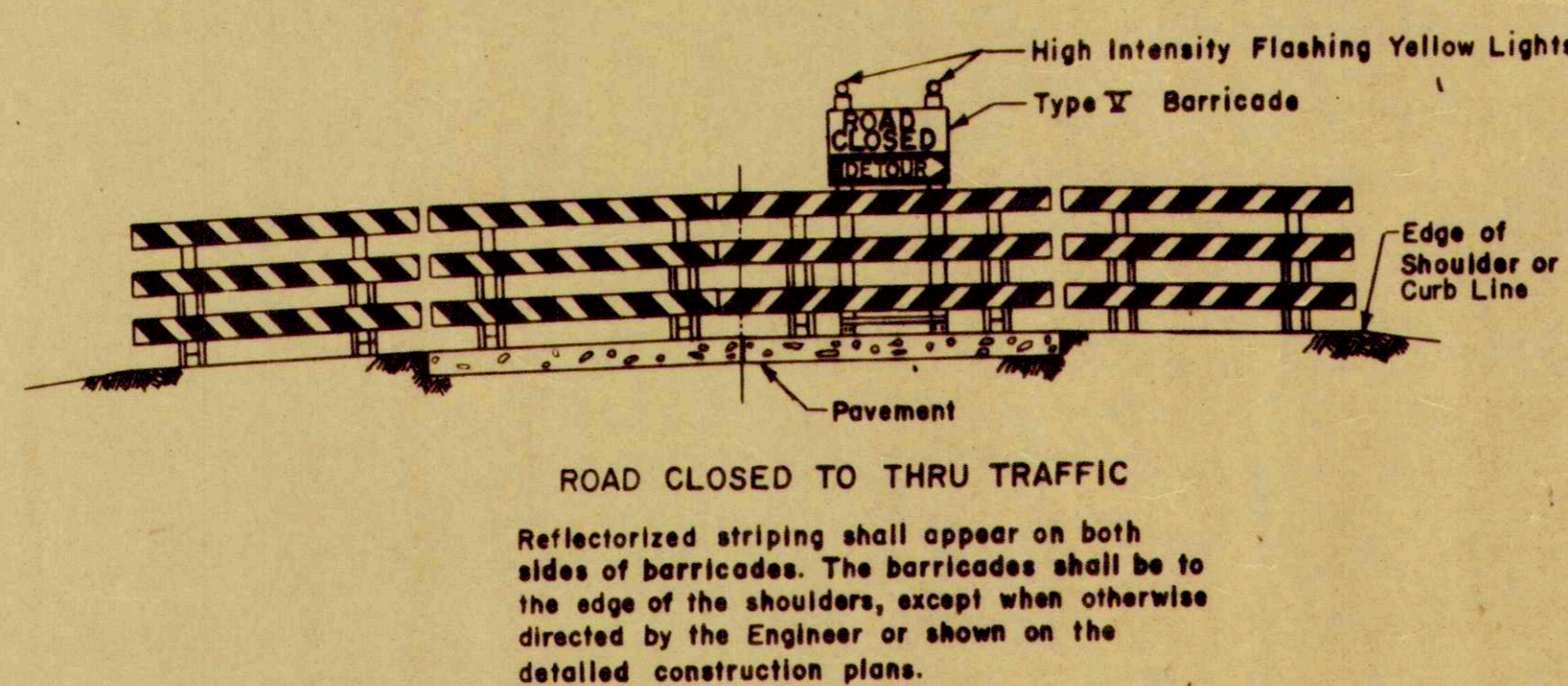
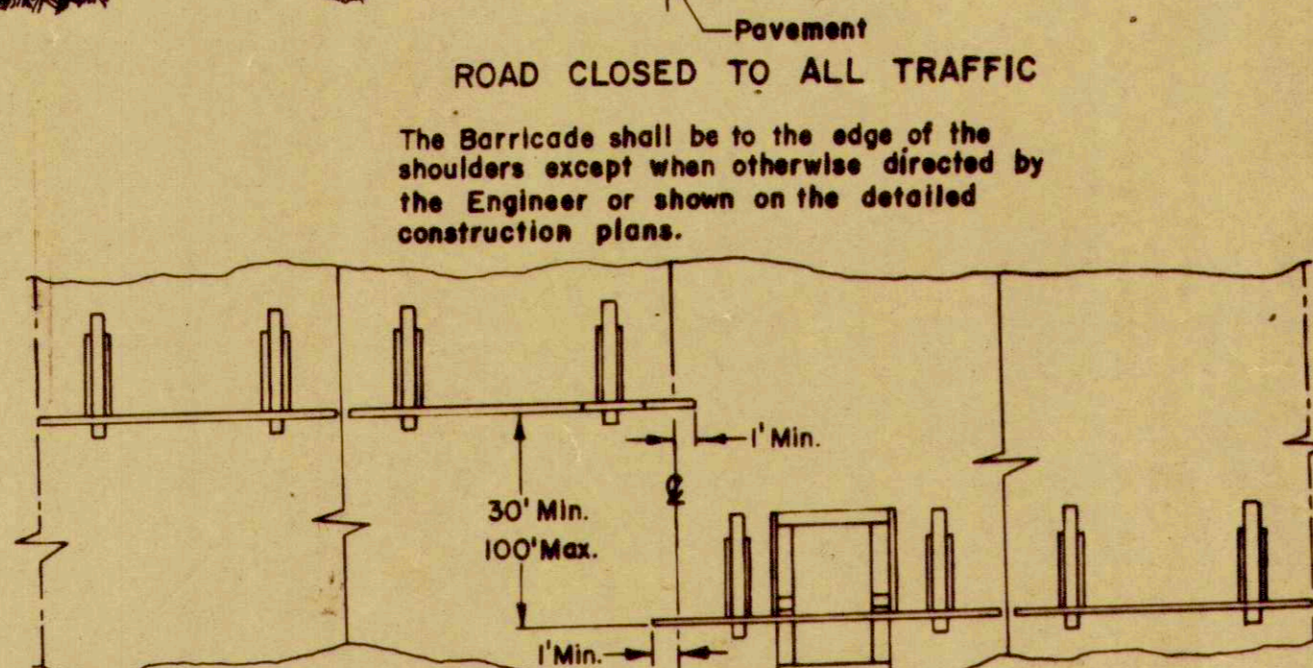
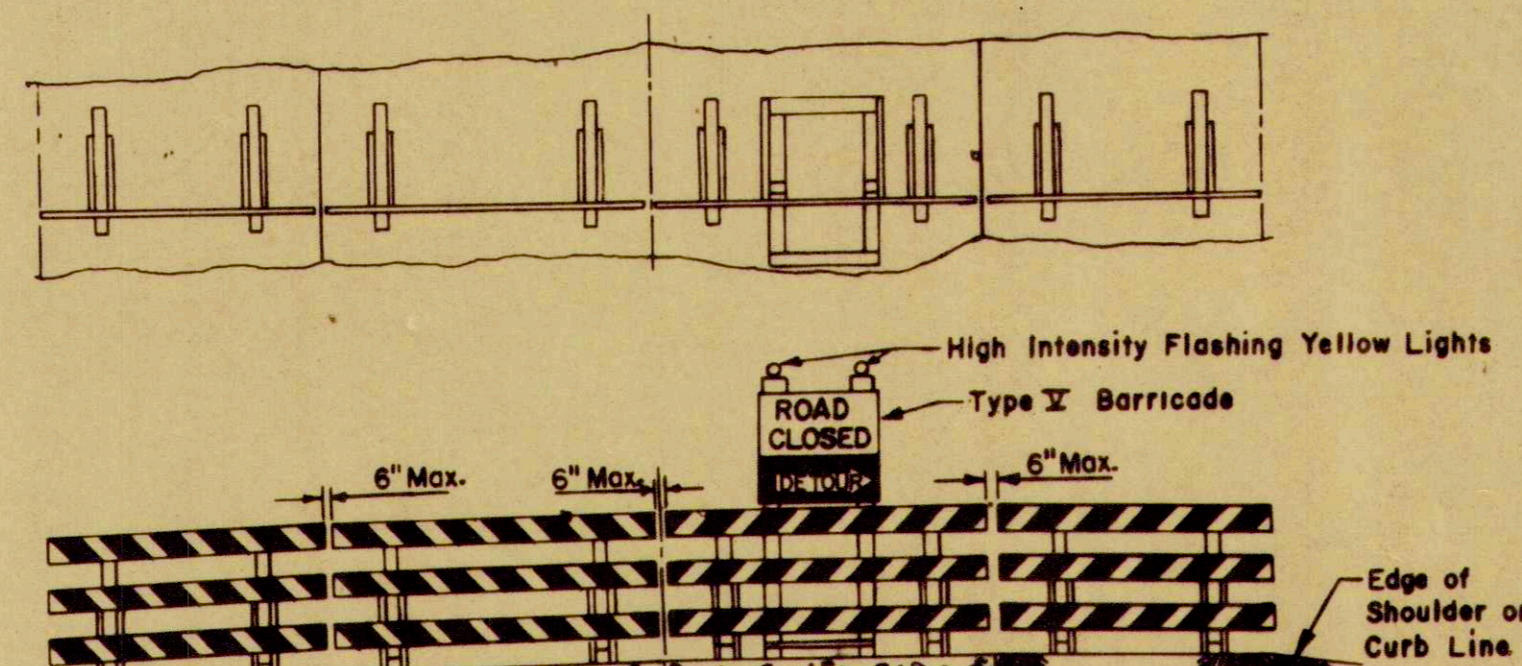


STANDARD METAL DRUM *

THE PREDOMINANT COLOR ON DRUMS SHALL BE BLACK OR ORANGE WITH AT LEAST TWO HORIZONTAL CIRCUMFERENTIAL WHITE STRIPES 4" TO 6" WIDE. DRUMS SHALL BE REFLECTORIZED. FOR USE AT NIGHT AND ADJUSTMENT DUE TO ODD SIZE DRUMS SHOULD BE DIVIDED BETWEEN THE UPPER AND LOWER STRIPES. THE WIDTH OF THE REFLECTIVE STRIPES SHOULD BE ADJUSTED TO PERMIT THE STRIPES TO BE PLACED ON FLAT SURFACES BETWEEN THE RAISED RIDGES IN AN ALTERNATING COLOR PATTERN. THIS WILL NORMALLY REQUIRE USE OF 5" (INCH) STRIPES. USE OF REFLECTIVE MATERIAL WILL NOT BE REQUIRED ON THE RAISED RIDGES OR ON FLAT SURFACES LESS THAN 5" (INCHES) WIDE. THE RAISED RIDGES AND SURFACES LESS THAN 5" (INCHES) IN WIDTH MAY BE PAINTED ORANGE OR WHITE.

* UNTIL A NATIONAL POLICY HAS BEEN ADOPTED ATTENDING IS DIRECTED TO THE "INSTRUCTION TO BIDDERS" OF THE CONTRACT PROPOSAL FOR THE USE AND COLOR COMBINATION OF REFLECTIVE SHEETING ON BARRELS.

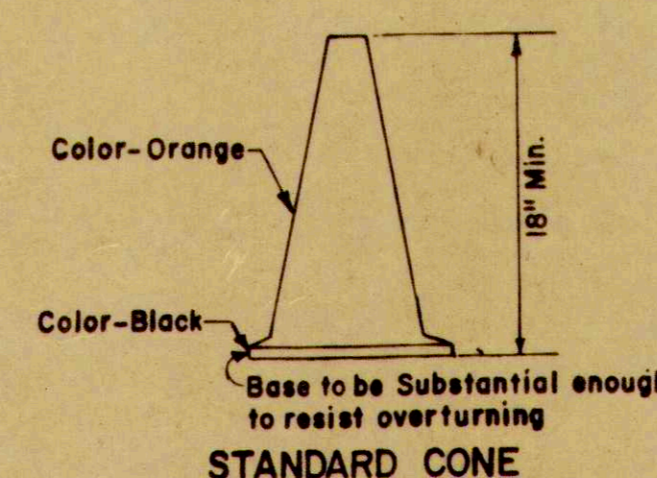
TYPICAL APPLICATIONS OF TYPE IV BARRICADES



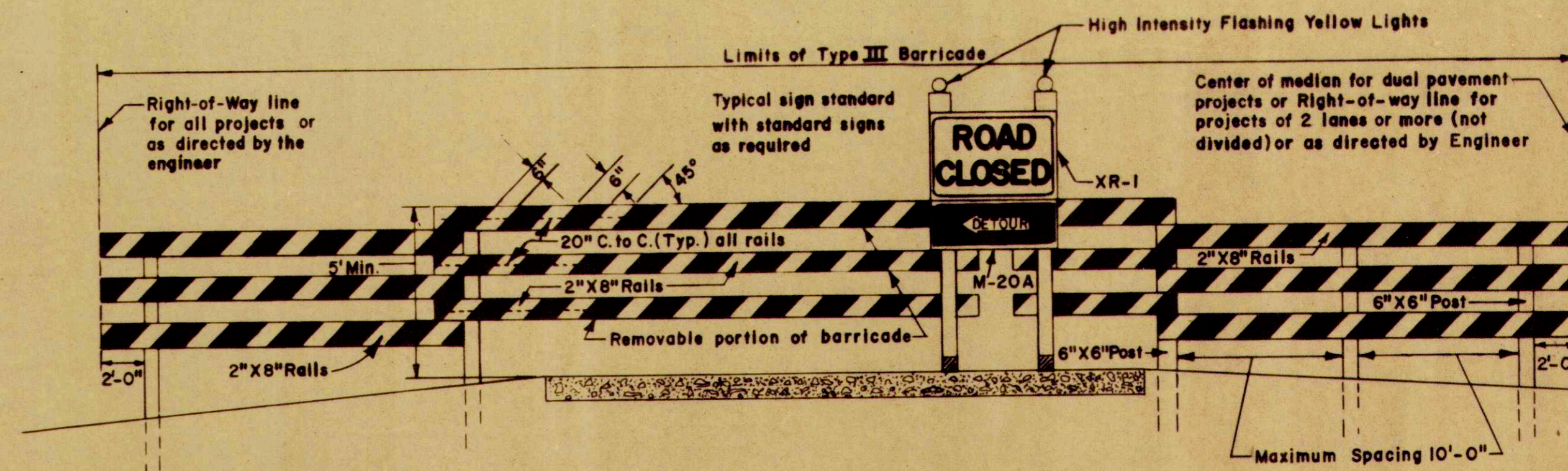
NOTES

- 1.- For Installation of Barricades See Detour Sign Sheet No. 2.
- 2.- Barricade Type IV shall be paid for at the Contract Unit Price per each for each 12' (foot) section used.
- 3.- Barricade Type IV shall not be paid for when used in conjunction with Barricade Type III, but shall be included in the cost of the barricade.
- 4.- Barricade Type IV shall be paid for at the Contract Unit Price per each when used in conjunction with the Barricade Type IV.
- 5.- Wood materials are to be untreated "Dimension Lumber" in accordance with the STANDARD SPECIFICATIONS.
- 6.- Typical Sign STANDARD shall be constructed same as that shown for Barricade Type IV with the exception of the signs and Strap Iron brackets.
- 7.- The width of stripes on all Barricades shall be 6" or as shown and slope downward at a 45° angle toward that side of barricade on which the approaching vehicle must pass.
- 8.- For color of stripes on Barricades see Note No. 7 on Detour Signs Sheet No. 2.
- 9.- For Type III and Type IV Barricades the stripes should slope downward in the direction toward which traffic must turn in Detouring, and where both Right and Left turns are provided for, the chevron stripping should slope downward in both directions from the center of the Barricade.
- 10.- As of Dec. 31, 1975 the only color combination that will be permitted on Barricades and Drums is White and Orange.

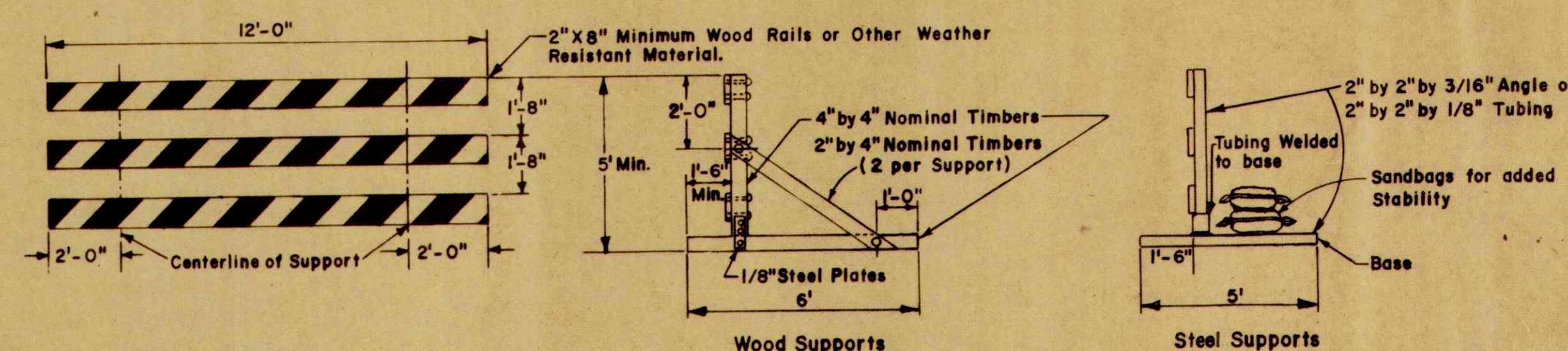
STANDARD BARRICADES



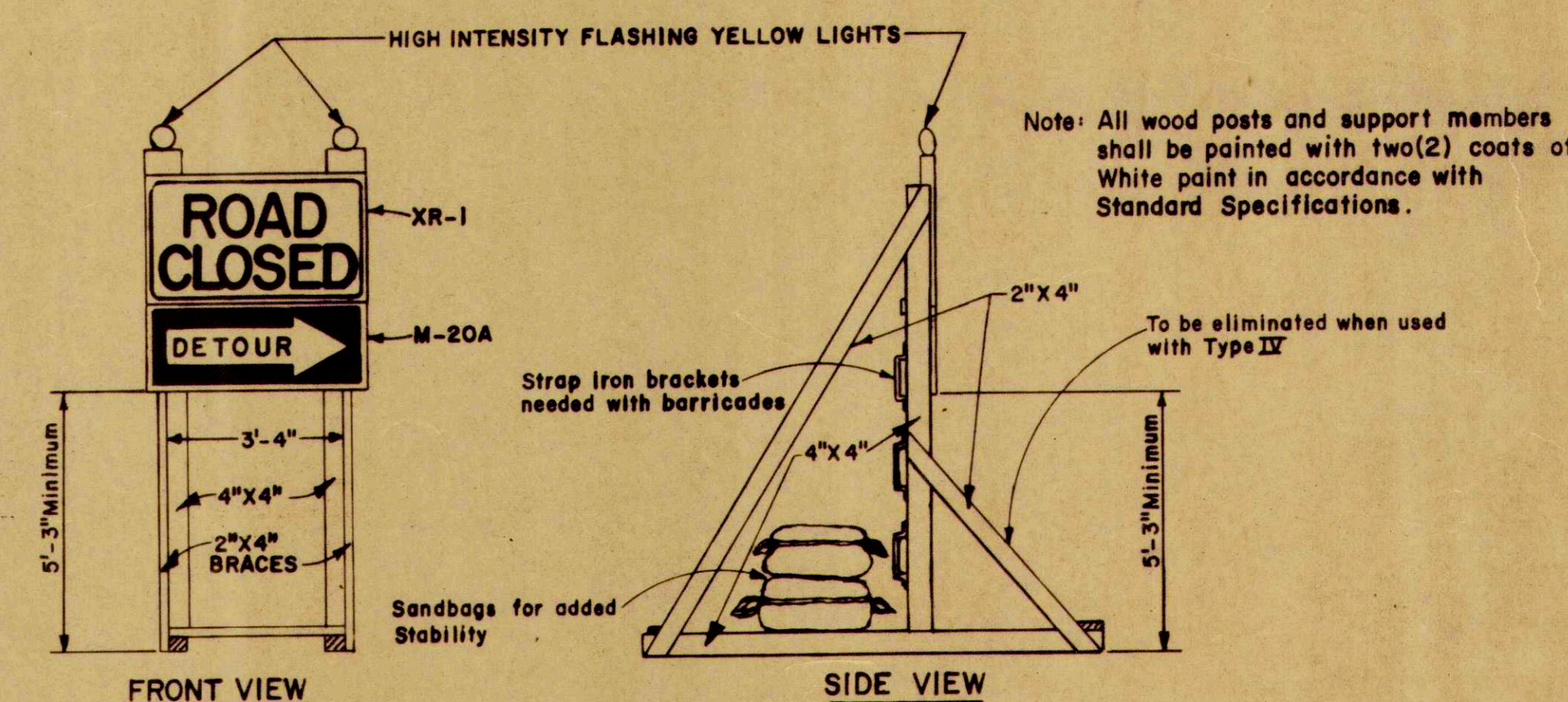
STANDARD CONE



TYPE III



TYPE IV



TYPE V

STANDARD DETOUR SIGNS STATE OF INDIANA NOVEMBER 1974

RECOMMENDED FOR APPROVAL: *[Signature]* ENGINEER OF TRAFFIC DESIGN & CONSTRUCTION
APPROVED: *[Signature]* CHIEF DIVISION OF TRAFFIC
APPROVED: *[Signature]* 1-21-75 CHIEF-HIGHWAY ENGINEER

SHEET
2A
DETOURS

RECORD DRAWING

63A
SHEET 88