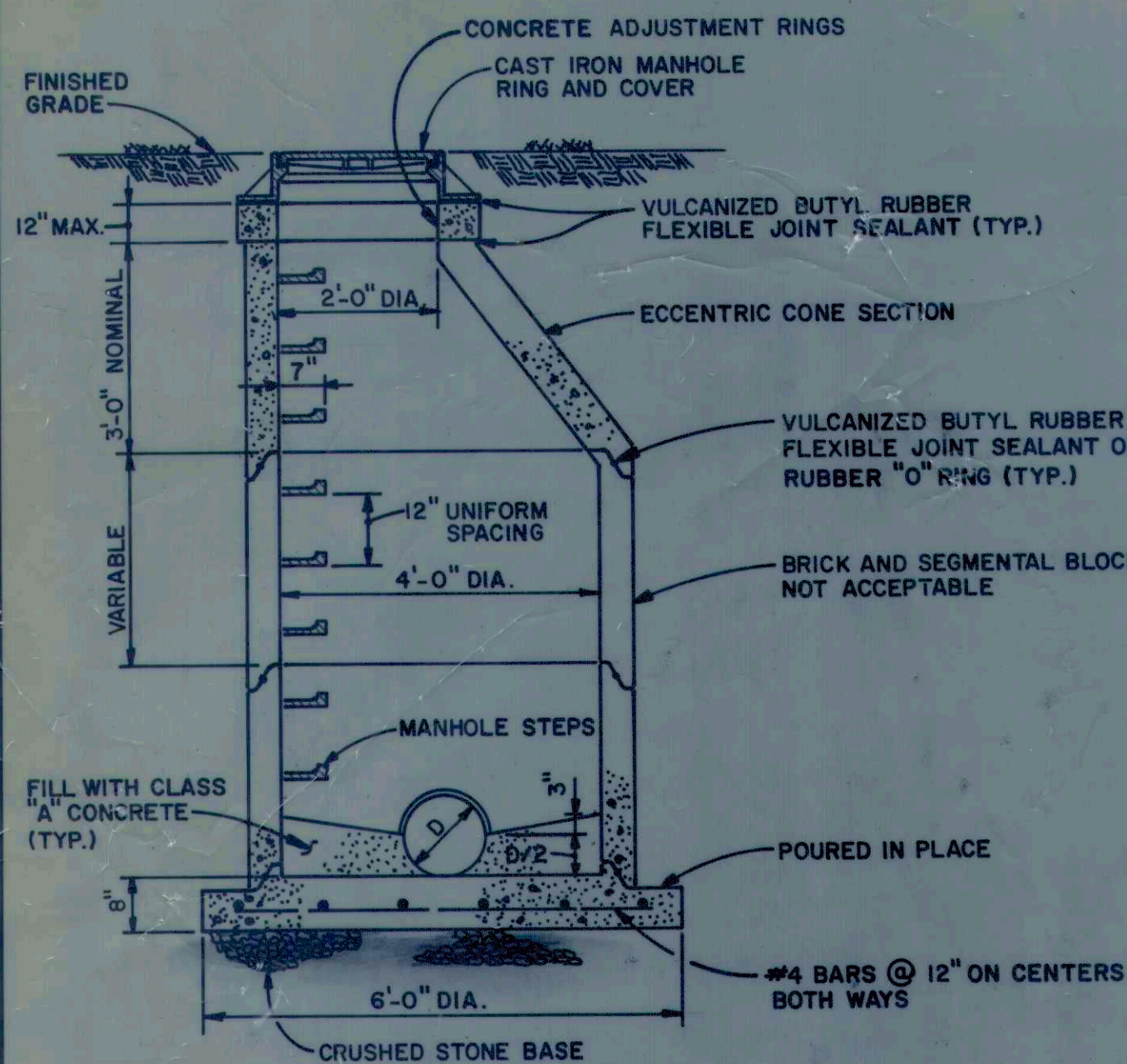


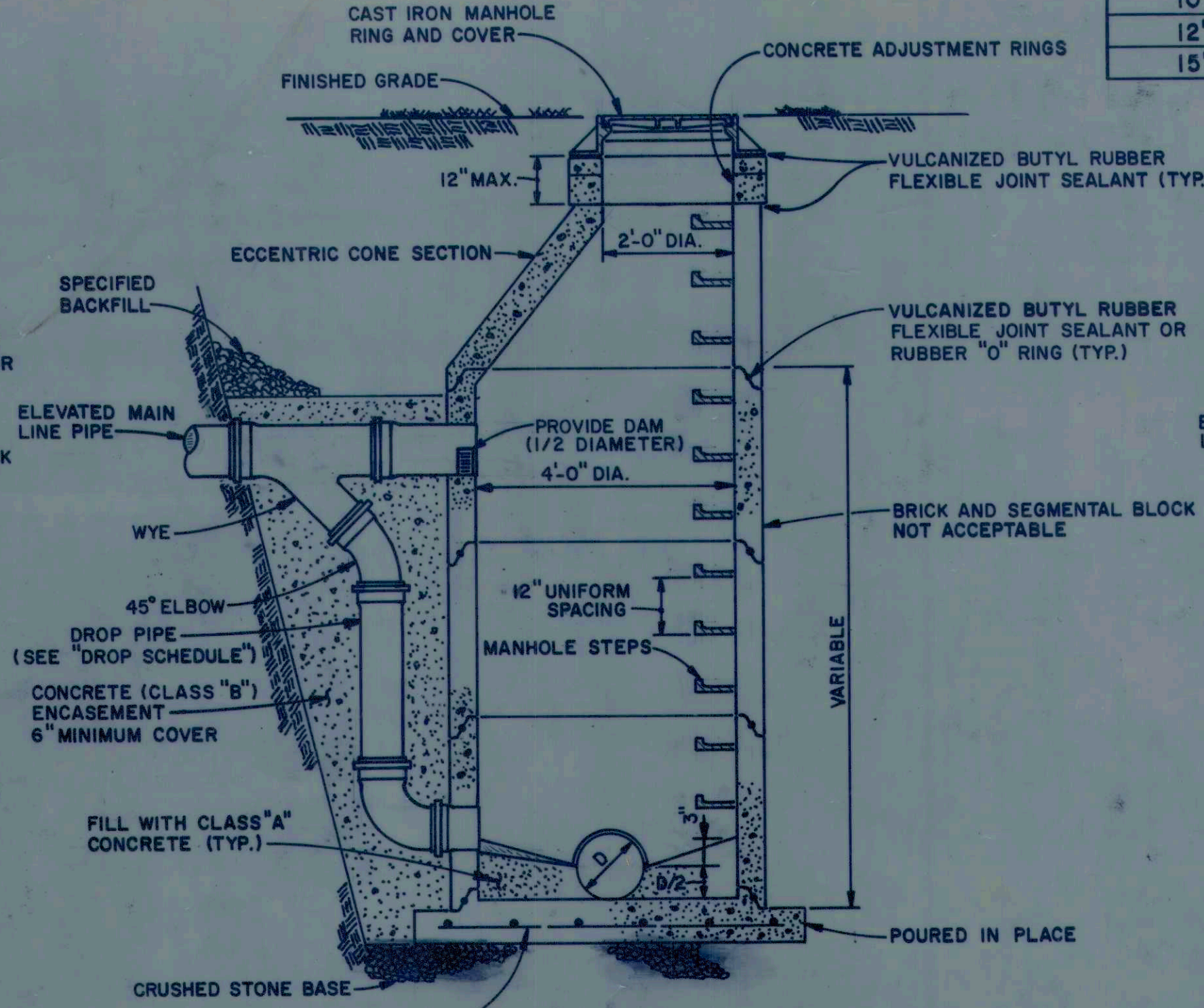
DROP PIPE SCHEDULE			
ELEV. MAIN	DROP PIPE	ELEV. MAIN	DROP PIPE
8"	6"	18"	12"
10"	8"	21"	15"
12"	10"	24"	15"
15"	12"	30"	18"

GENERAL NOTES

- ALL MATERIALS AND WORKMANSHIP SHALL CONFORM TO THE LATEST A.S.T.M. SPECIFICATIONS.
- CONTRACTOR MUST RESTORE ALL PUBLIC AND PRIVATE FACILITIES DISTURBED DURING CONSTRUCTION TO THEIR ORIGINAL OR BETTER CONDITION.
- ALL HOUSE CONNECTIONS SHALL BE 6" DIA. SEWER PIPE.
- THE CONTRACTOR SHALL INCLUDE IN HIS "IN PLACE" COST FOR SEWERS, WHATEVER COSTS ARE NECESSARY FOR EXCAVATING, BACKFILLING, SHEETING, SHORING, BRACING, CLEARING OR OTHER PROCEDURES REQUIRED TO INSTALL THE SEWERS IN THE LOCATIONS SHOWN AND WITHIN AVAILABLE R/W.
- PARTICULAR ATTENTION MUST BE PAID TO SIDE DITCH DRAINAGE DURING FINAL GRADING TO INSURE PROPER SURFACE DRAINAGE FOR THE AREA.
- UTILITIES INDICATED ON THE DRAWINGS ARE LOCATED TO THE BEST INFORMATION AVAILABLE WHERE CONSTRUCTION TAKES PLACE NEAR ANY UTILITY. THE CONTRACTOR SHALL HAVE THE UNDERGROUND UTILITY FIELD LOCATED BEFORE STARTING WORK.
- EXISTING CULVERTS REMOVED DURING CONSTRUCTION MAY BE RE-USED UPON ENGINEERS INSPECTION AND APPROVAL. NEW CULVERT PIPE SHALL BE USED WHEN IN STATE HIGHWAY OR COUNTY RIGHT OF WAY.
- MANHOLE ADJUSTMENT RINGS TO BE ADJUSTED TO MATCH FINAL GROUND OR PAVEMENT GRADE, UNLESS OTHERWISE NOTED ON PLANS.
- MANHOLE BOTTOMS SHALL BE FORMED TO PROVIDE CHANNELS CONFORMING IN SIZE AND SHAPE TO THE INCOMING AND OUTGOING SEWERS WITH SMOOTH CHANNEL INVERTS SLOPED AND FILLETED IN A MANNER TO PREVENT DEPOSITION OF SOLIDS IN THE MANHOLE.
- WHEN MAIN SEWER DIAMETER IS 24" TO 36", THE INSIDE DIAMETER OF THE MANHOLE BASE SHALL BE 60" MINIMUM.

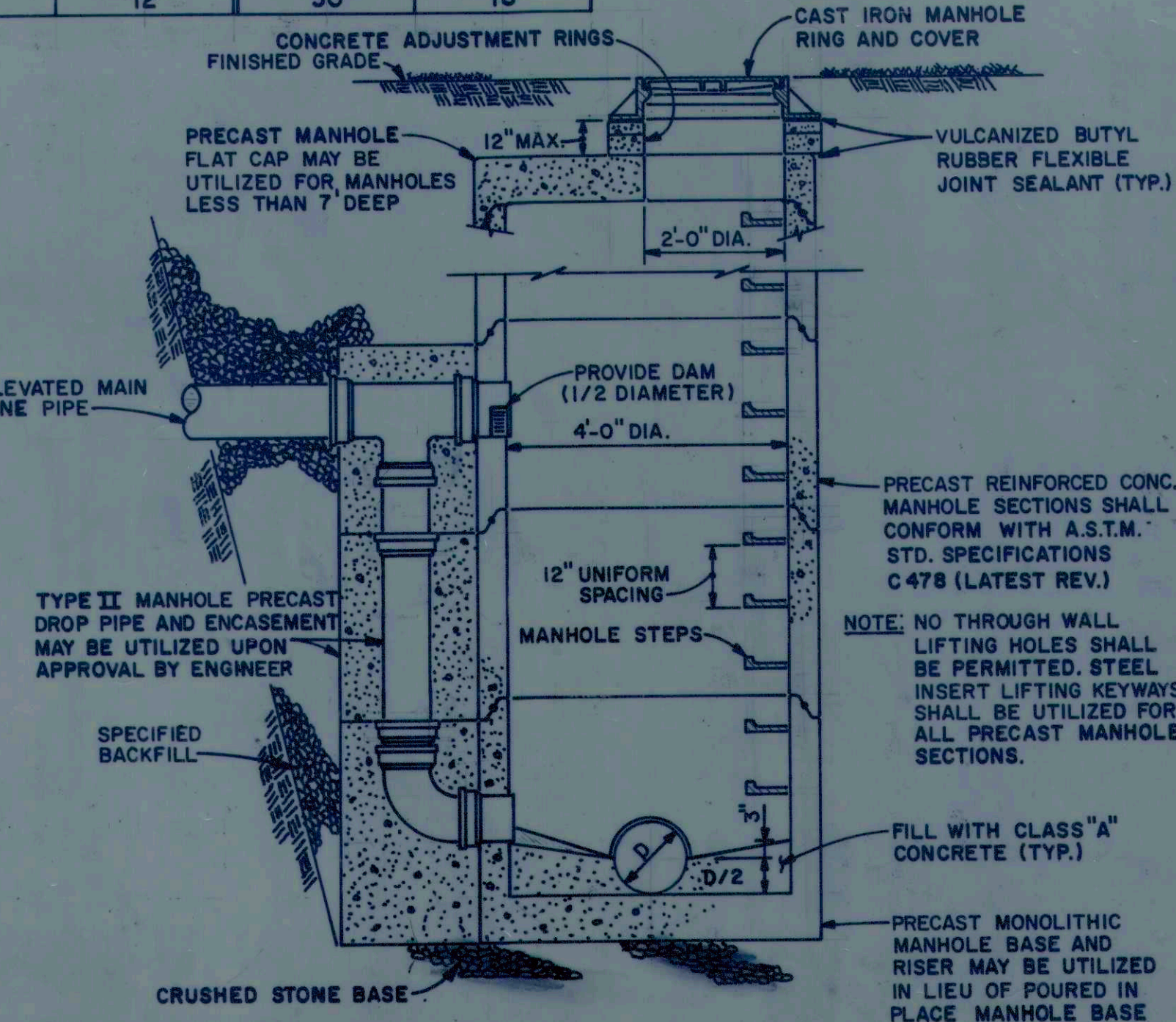


TYPE I
STANDARD MANHOLE FOR SEWERS
21" OR LESS IN DIAMETER

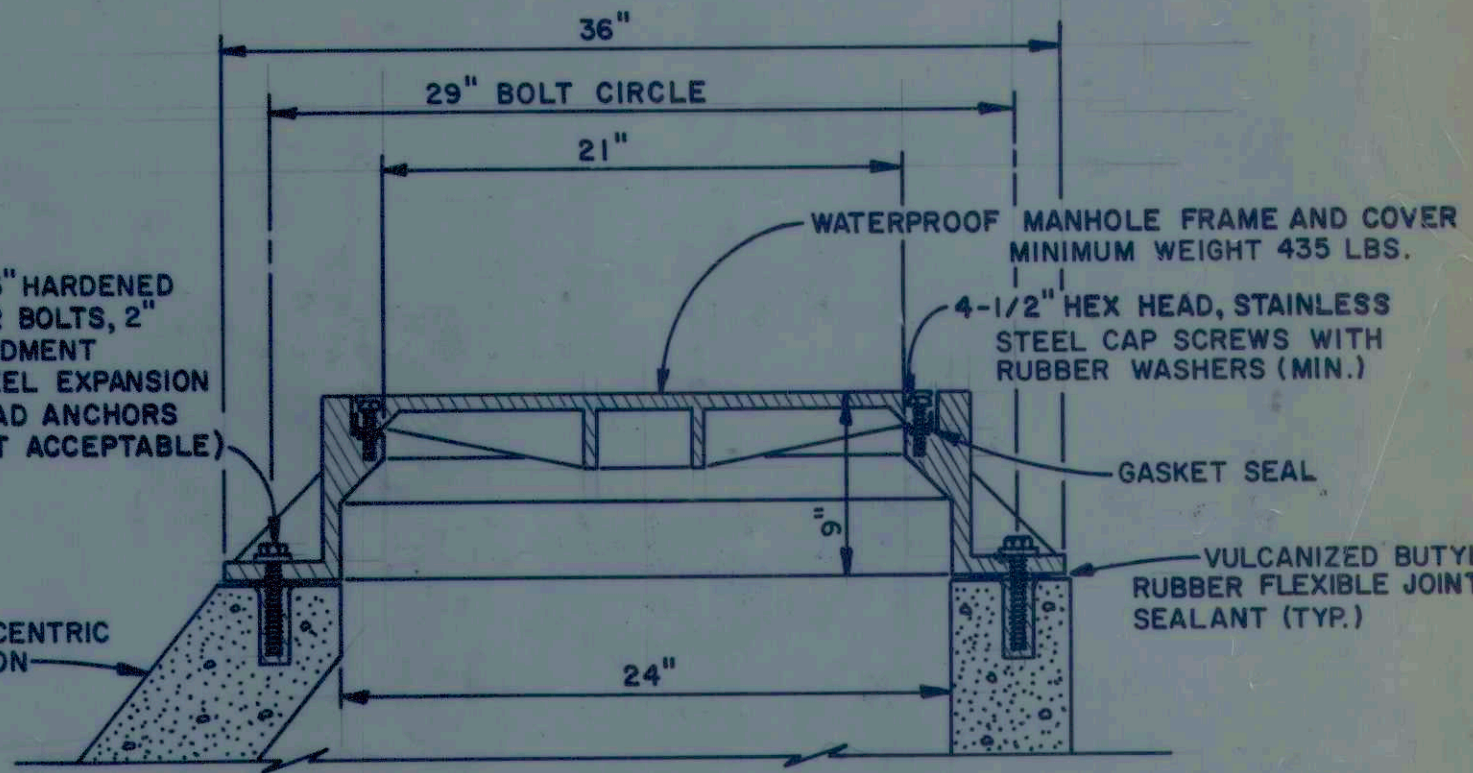


TYPE II
DROP MANHOLE FOR SEWERS
21" OR LESS IN DIAMETER

NOTE: SOME TYPE II (DROP) MANHOLES MAY REQUIRE MORE THAN ONE DROP PIPE. THE BID ITEM MANHOLE TYPE II SHALL INCLUDE AS MANY DROP PIPES AS NECESSARY.

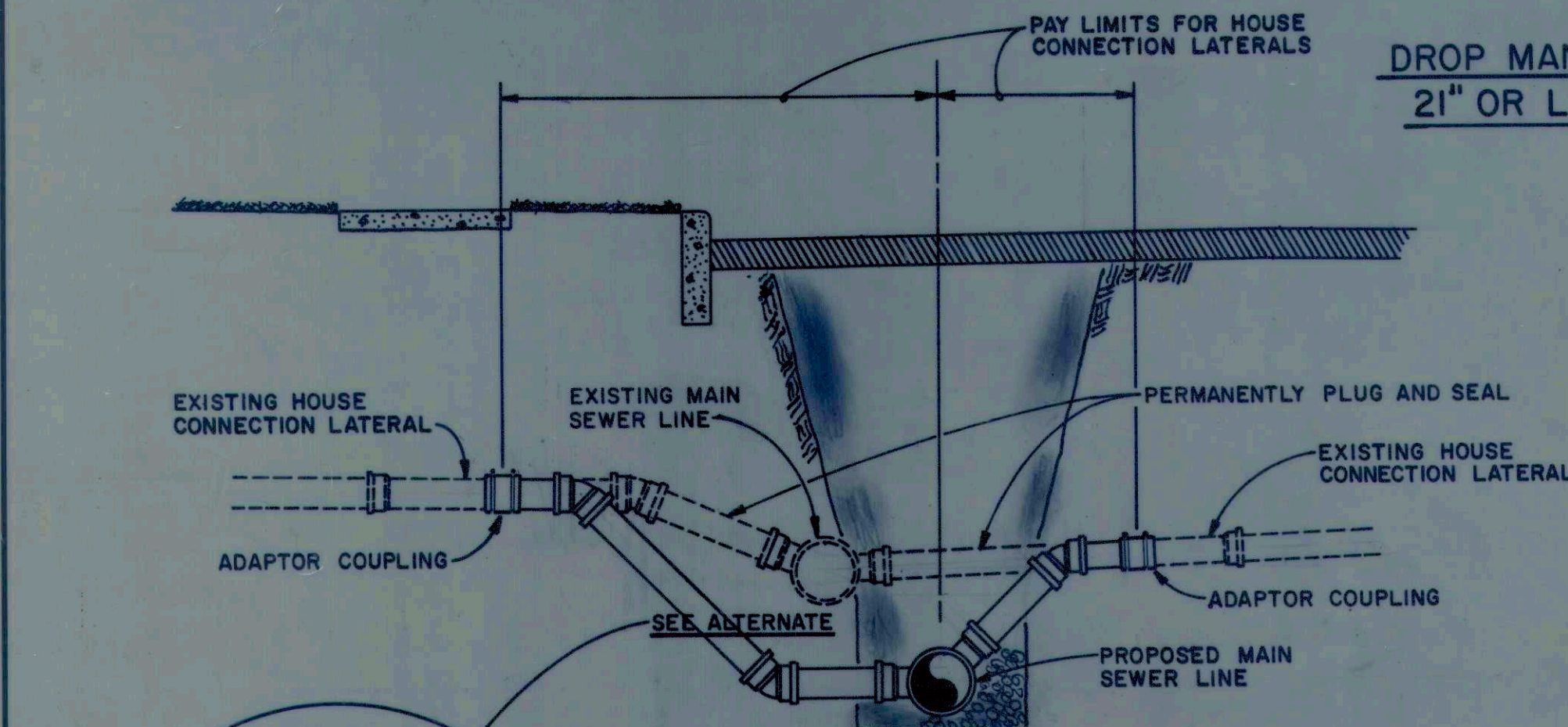


TYPE II
PRECAST DROP MANHOLE FOR SEWERS
21" OR LESS IN DIAMETER

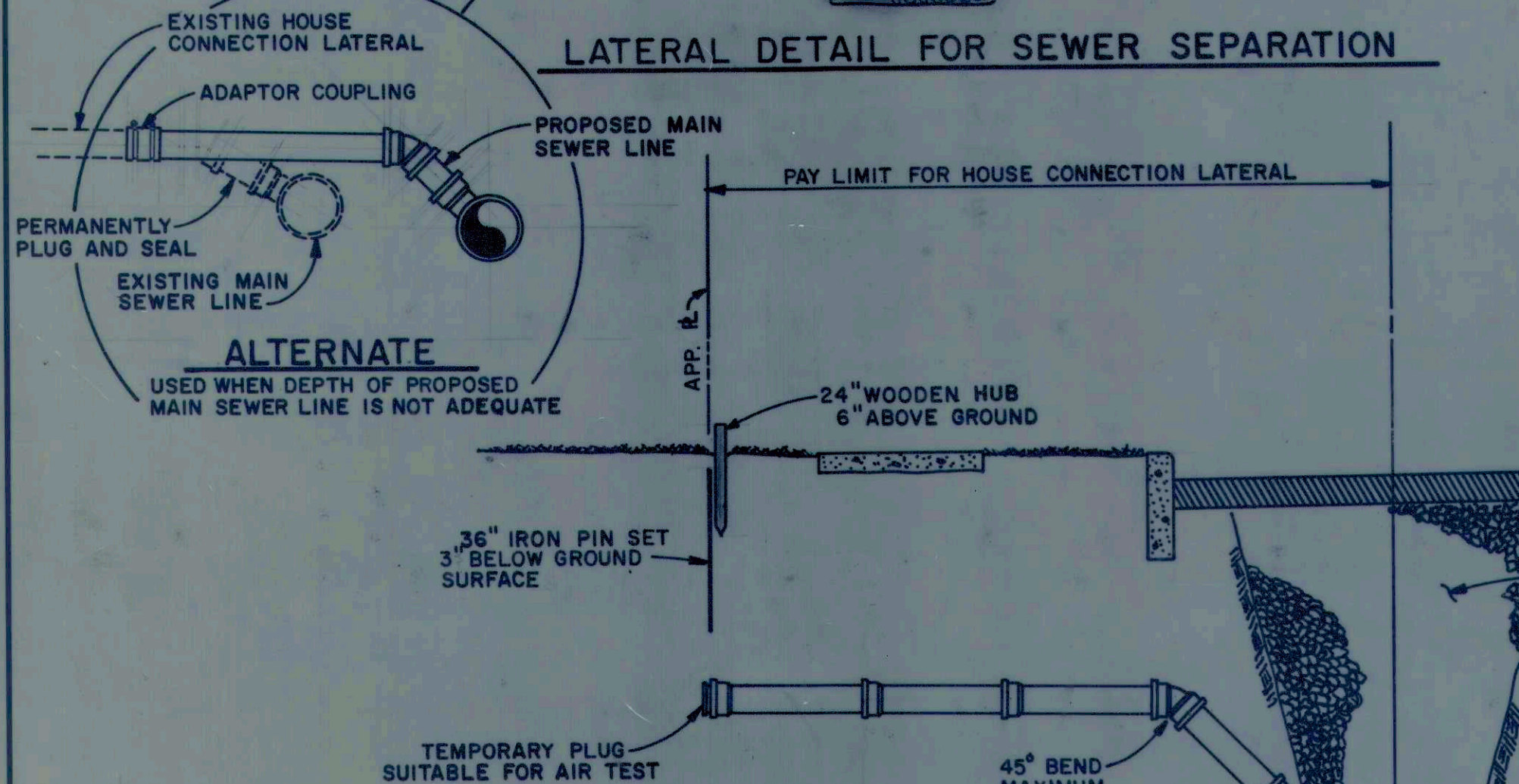


NOTE: ANCHOR BOLTS AND BOLT HOLES SHALL BE FURNISHED AS PART OF INSTALLATION. WATERPROOF AND FLOODPROOF SHALL BE CONSIDERED AS BEING THE SAME.

FLOODPROOF MANHOLE DETAIL

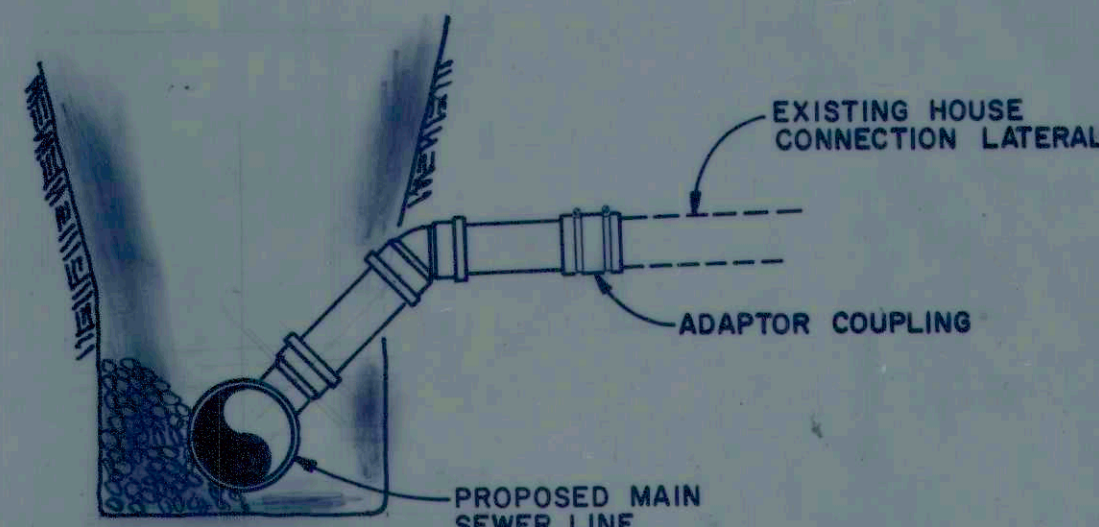


LATERAL DETAIL FOR SEWER SEPARATION

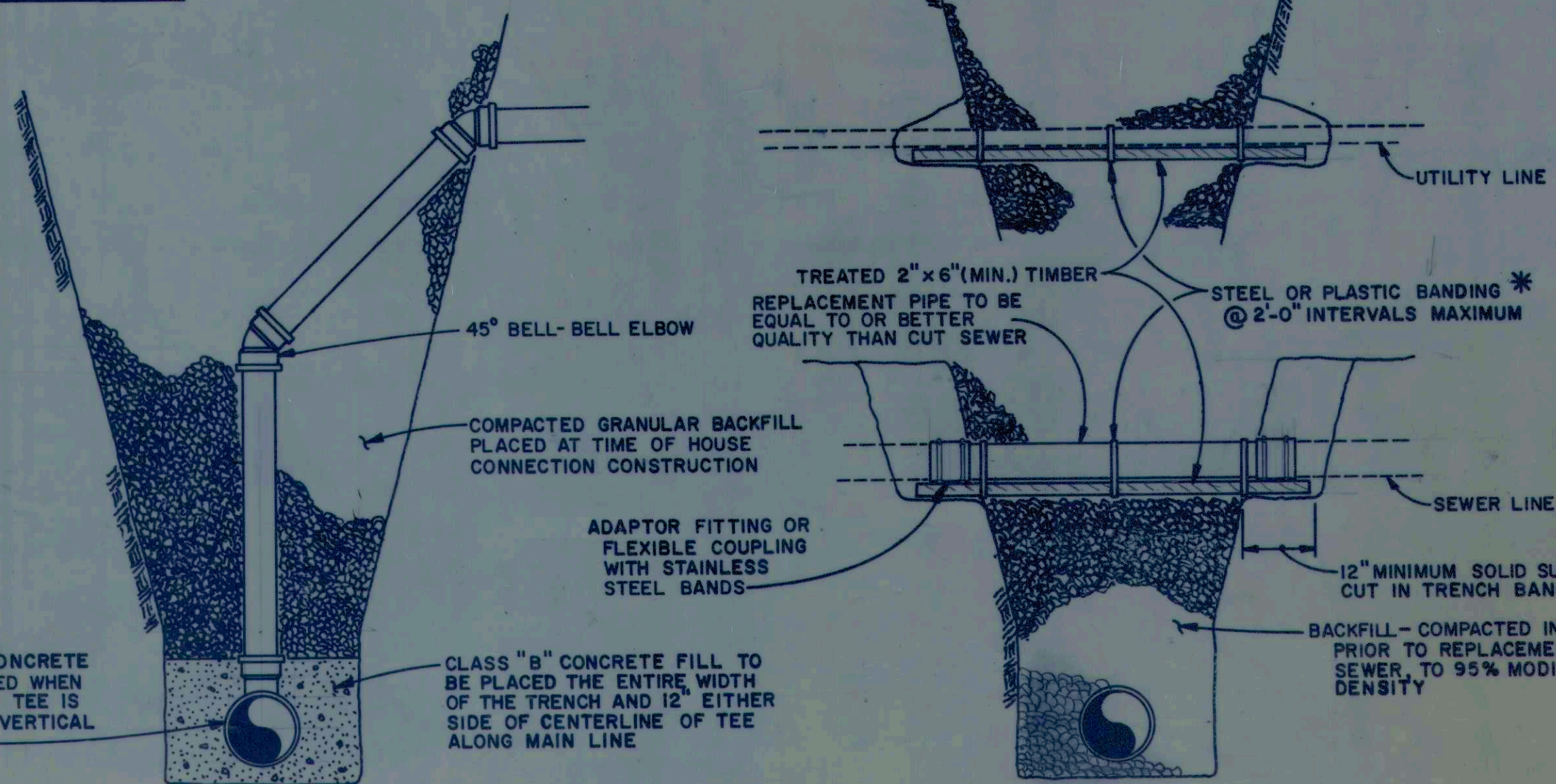


TYPICAL LATERAL DETAIL

LATERAL DETAIL MAIN SEWER REMOVE AND REPLACE

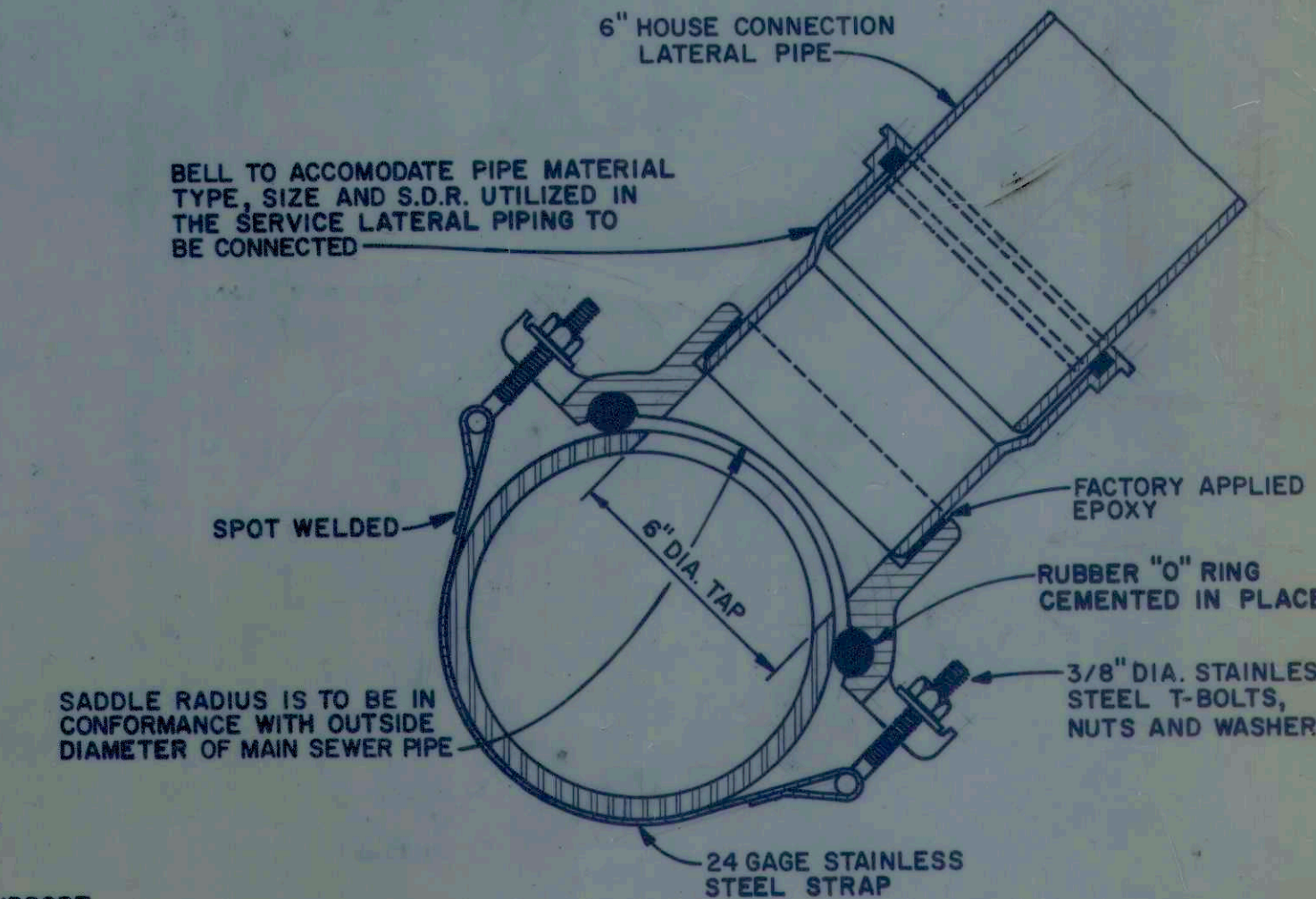
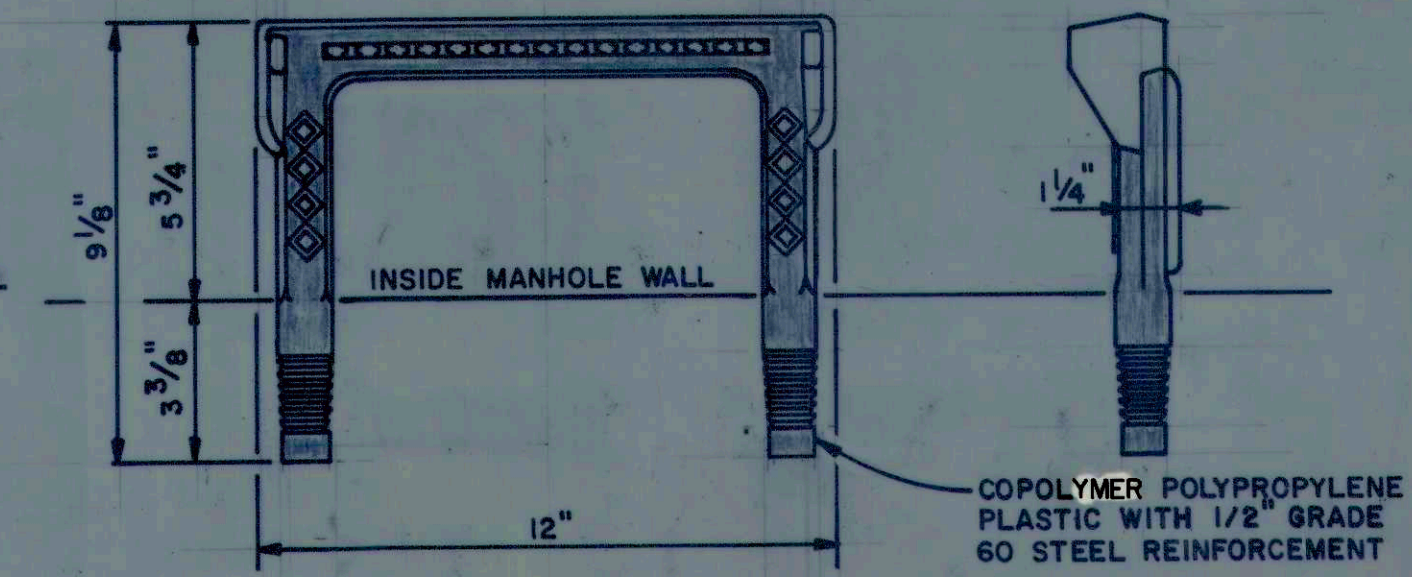


NOTE:
FOR PIPE TRENCH DETAILS SEE
"MISCELLANEOUS DETAILS" SHEET



LATERAL DETAIL FOR DEEP SEWERS

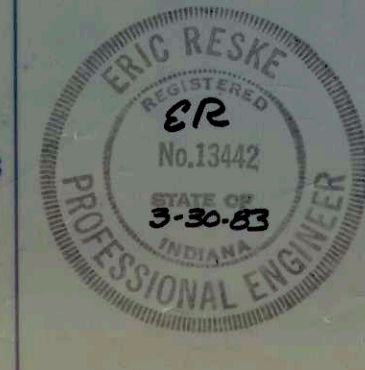
MANHOLE STEP DETAIL



SEWER PIPE SADDLE DETAIL

RECORD DRAWING SEWER DETAILS

Scale: As Noted	FALL CREEK R.W.D.	Sheet
Drawn By: P.B.	BEAM, LONGEST & NEFF	83
Designed By: R.C.	Consulting Engineers 8136 Castleton Road Indianapolis, IN 46250	
Certified By: E.R.		



DETAIL FOR REPAIR AND SUPPORT OF EXPOSED UTILITIES AND SEWERS

* BANDING TO BE MINIMUM 1" WIDTH MATERIAL AND TO BE INSTALLED WITH STANDARD BANDING TOOLS