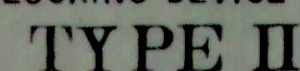
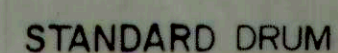


STRIPES SHALL SLOPE DOWNWARD TOWARDS THAT SIDE OF THE BARRICADE ON WHICH THE APPROACHING VEHICLE MUST PASS. (STRIPES AS SHOWN INDICATE VEHICLE MUST PASS TO LEFT OF BARRICADE.)



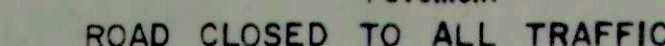
\* X BARRICADE TYPE II WITH A NON-STANDARD  
BOTTOM RAIL MAY BE CONSIDERED AS A  
BARRICADE TYPE I.



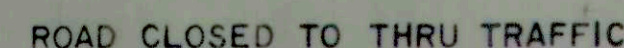
THE PREDOMINANT COLOR ON DRUMS SHALL BE ORANGE WITH AT LEAST TWO HORIZONTAL CIRCUMFERENTIAL WHITE STRIPES 4" TO 8" WIDE. DRUMS SHALL BE REFLECTORIZED. FOR USE AT NIGHT AND ADJUSTMENT DUE TO ODD SIZE DRUMS SHOULD BE DIVIDED BETWEEN THE UPPER AND LOWER STRIPES. THE WIDTH OF THE REFLECTIVE STRIPES SHOULD BE ADJUSTED TO PERMIT THE STRIPES TO BE PLACED ON FLAT SURFACES BETWEEN THE RAISED RIDGES IN AN ALTERNATING COLOR PATTERN. THIS WILL NORMALLY REQUIRE USE OF 4" TO 8" STRIPES. USE OF REFLECTIVE MATERIAL WILL NOT BE REQUIRED ON THE RAISED RIDGES OR ON FLAT SURFACES LESS THAN 2"(INCHES) WIDE. THE RAISED RIDGES AND SURFACES LESS THAN 2"(INCHES) IN WIDTH MAY BE PAINTED BLACK OR OTHER SUITABLE COLOR.

\*\*\* PAINTED BLACK OR OTHER SUITABLE COLOR.

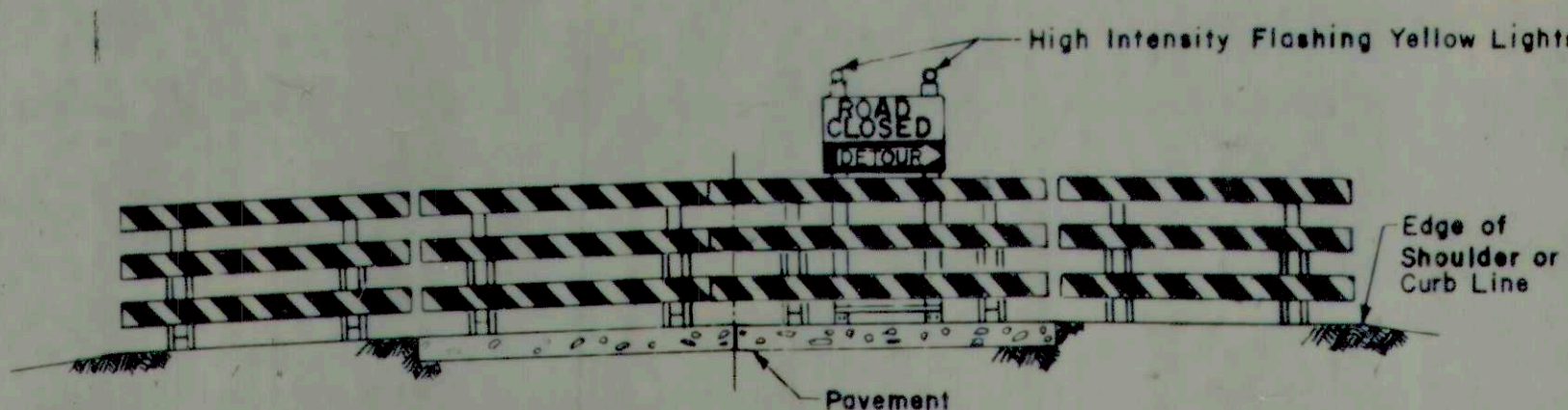
## A hand-drawn sketch of a building facade. It features a central entrance with a pediment supported by two columns. On either side of the entrance are windows. The drawing is done in a simple, sketchy style with visible lines and shading.



The Barricade shall be to the edge of the shoulders except when otherwise directed by the Engineer or shown on the detailed construction plans.



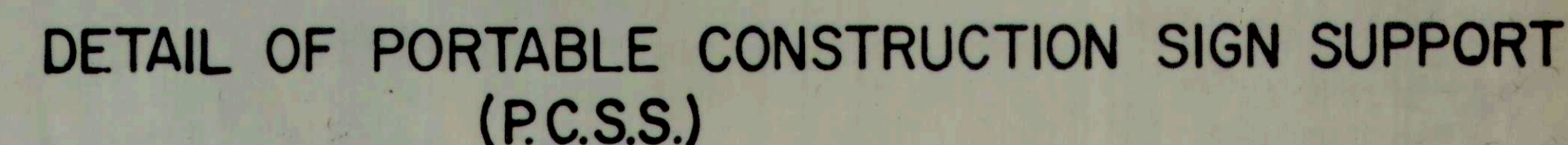
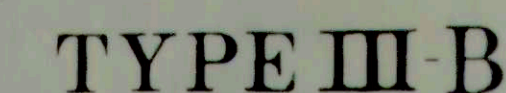
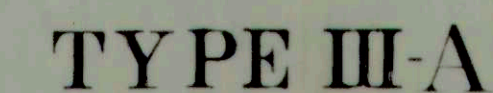
Reflectorized striping shall appear on both sides of barricades. The barricades shall be to the edge of the shoulders, except when otherwise directed by the Engineer or shown on the detailed construction plans.



NOTES:

- 1.- The only color combination that is permitted on Barricades and Drums is White and Orange. The Orange shall be Encapsulated Lens (High Intensity) Reflective Sheeting and the White shall be Enclosed Lens Reflective Sheeting (Engineer Grade).
- 2.- For Installation of Barricades See Detour Sign Sheet No.2.
- 3.- Barricade Type III-B shall be paid for at the Contract Unit Price per each for each 12'(foot) section used.
- 4.- The (P.C.S.S.) shall not be paid for when used in conjunction with Barricade Type III A, but shall be included in the cost of the barricade.
- 5.- The (P.C.S.S.) shall be paid for at the Contract Unit Price per each when used in conjunction with the Barricade Type III-B
- 6.- Wood materials are to be untreated "Dimension Lumber" in accordance with the STANDARD SPECIFICATIONS.
- 7.- Typical Sign STANDARD shall be constructed same as that shown for the (P.C.S.S.) with the exception of the signs and Strap Iron brackets.
- 8.- The width of stripes on all Barricades shall be 6" or as shown and slope downward at a 45° angle toward that side of barricade on which the approaching vehicle must pass. If the barricade is less than 3 feet in length the width of the stripes shall be 4'
- 9.- For Type III-A & III-B Barricades the stripes should slope downward in the direction toward which traffic must turn in Detouring, and where both Right and Left turns are provided for, the chevron stripping should slope downward in both directions from the center of the barricade.

## STANDARD BARRICADES



STANDARD  
DETOUR SIGNS  
STATE OF INDIANA  
NOVEMBER 1974

RECOMMENDED FOR APPROVAL \_\_\_\_\_ ENGINEER OF TRAFFIC DESIGN & CONSTRUCTION

APPROVED Clinton J. V.  
CHIEF - DIVISION OF TRAFFIC

APPROVED Ed. J. ...  
CHIEF - HIGHWAY ENGINEER

Revisions	
8-1-79	Sandbag & Mefo / bar on Type II: stripes on Type IV
8-3-81	Barrier Type I
7-1-82	NEW MILITARY

SHEET  
2A  
DETOURS

**RECORD DRAWING** *Sheet N° 86*

63 A